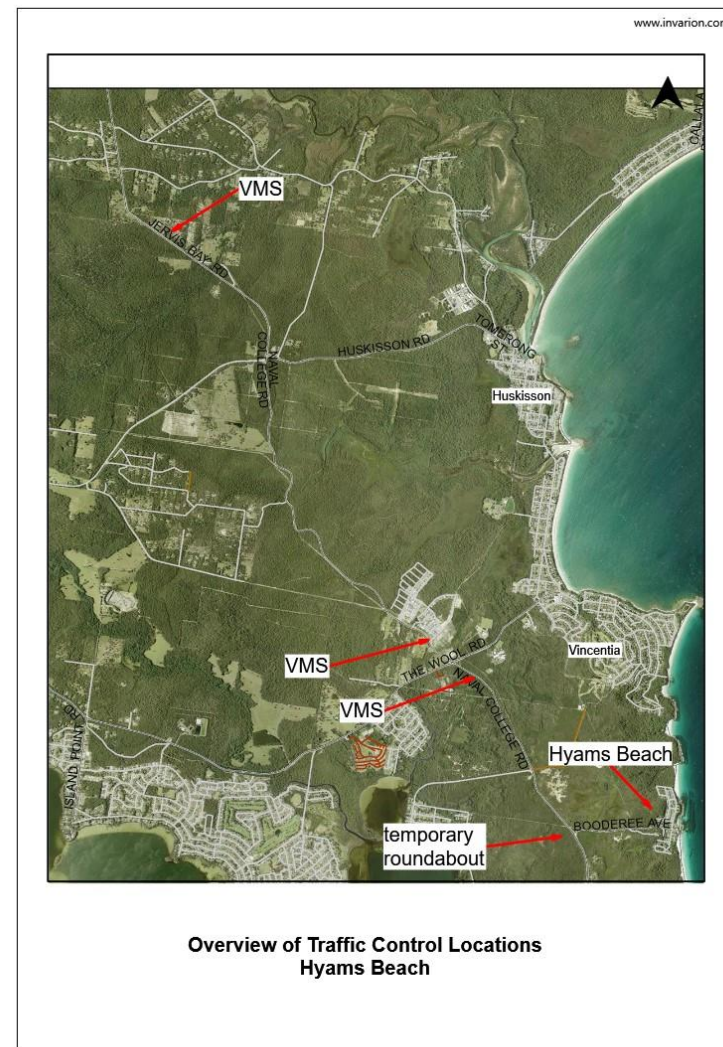


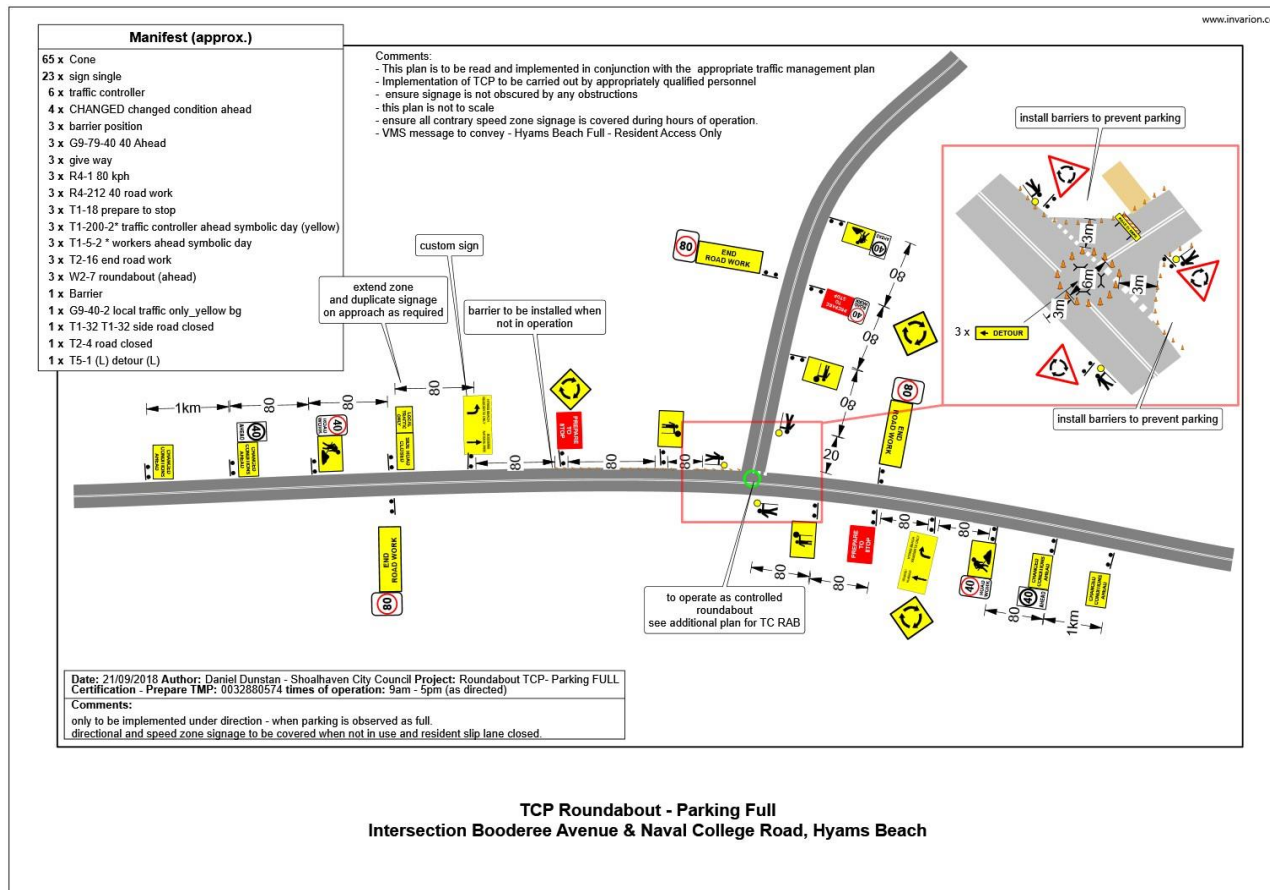
# Christmas/New Year Peak Period Preparations

## Hyams Beach

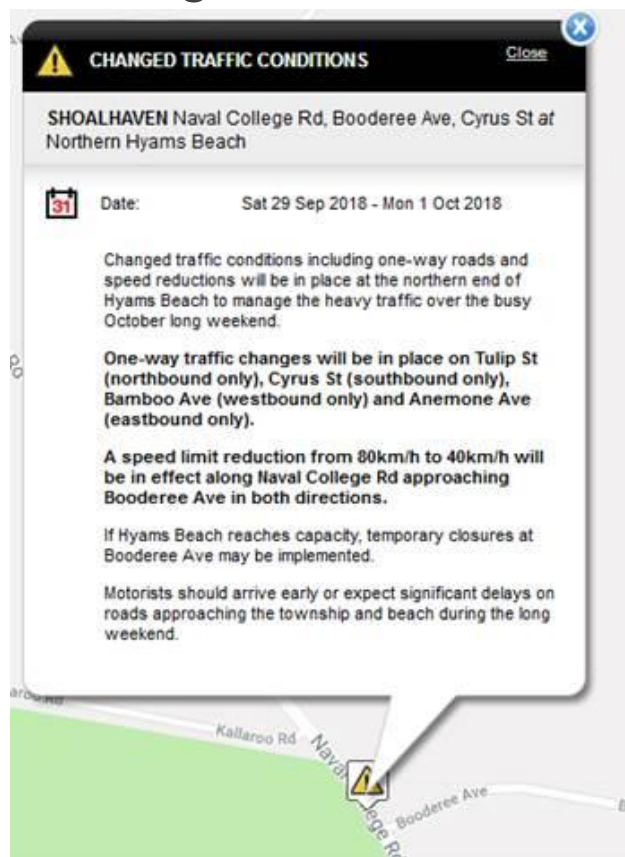
- External Traffic Control company contracted to conduct traffic control Services - under a Traffic Management Plan – 7am to 7pm
  - 5 traffic control staff – roundabout operation and village traffic management
- One way traffic system in Nth of Village – as per Christmas, Easter & Oct Long Weekend
- 3x VMS boards at the following locations:
  - Jervis Bay Rd before Huskisson turnoff
  - After Vincentia marketplace before roundabout
  - On Naval College Road – advising temporary roundabout in operation



- Temporary roundabout Naval College & Booderee Ave
  - Under Traffic Control and Traffic Management Plan – 7am to 7pm



- Live Traffic Site – Notice of change of conditions in the village and approaching



## Amenities:

- 2x Portaloos Chinamans Beach
- 2x Portaloos Seamans Carpark
- Extra large waste bins – Extra services
  
- Ranger Services
- Traffic & Parking Surveys – starting over Christmas
  - See Get Involved page for all info re: Hyams Beach
  
- Line marking being reapplied next week weather permitting – Booderee Ave and within the village