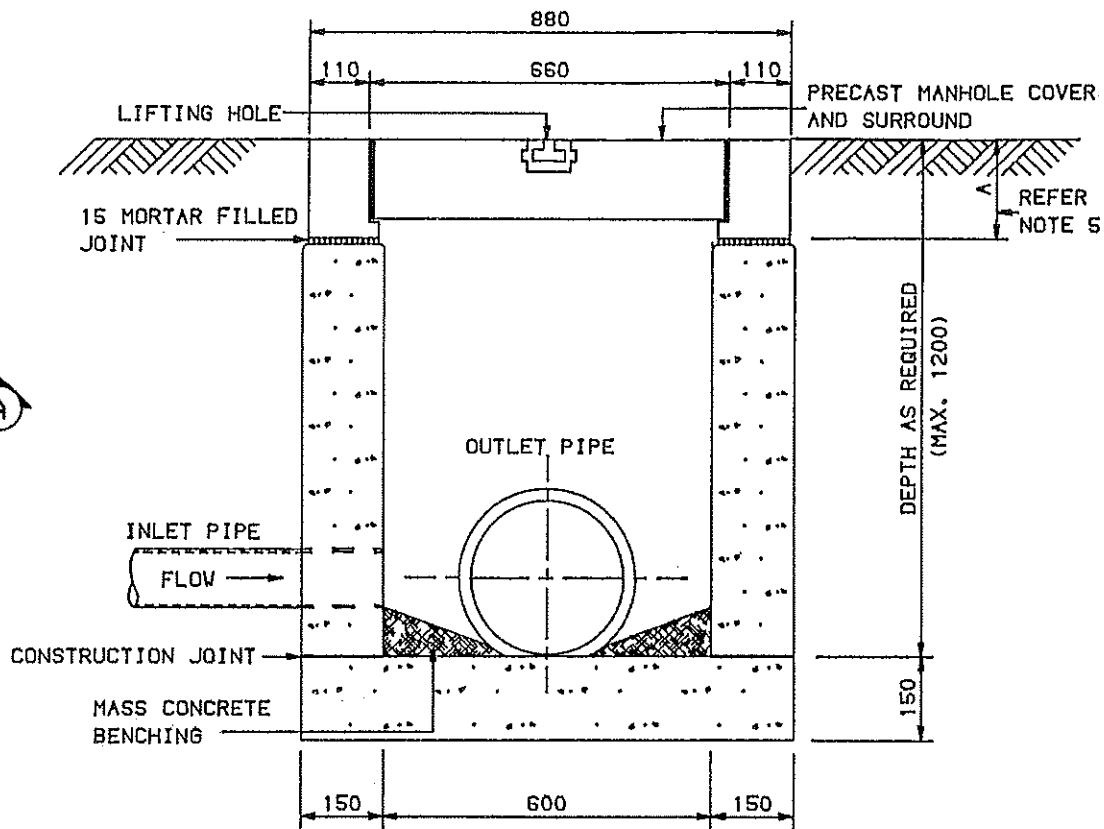
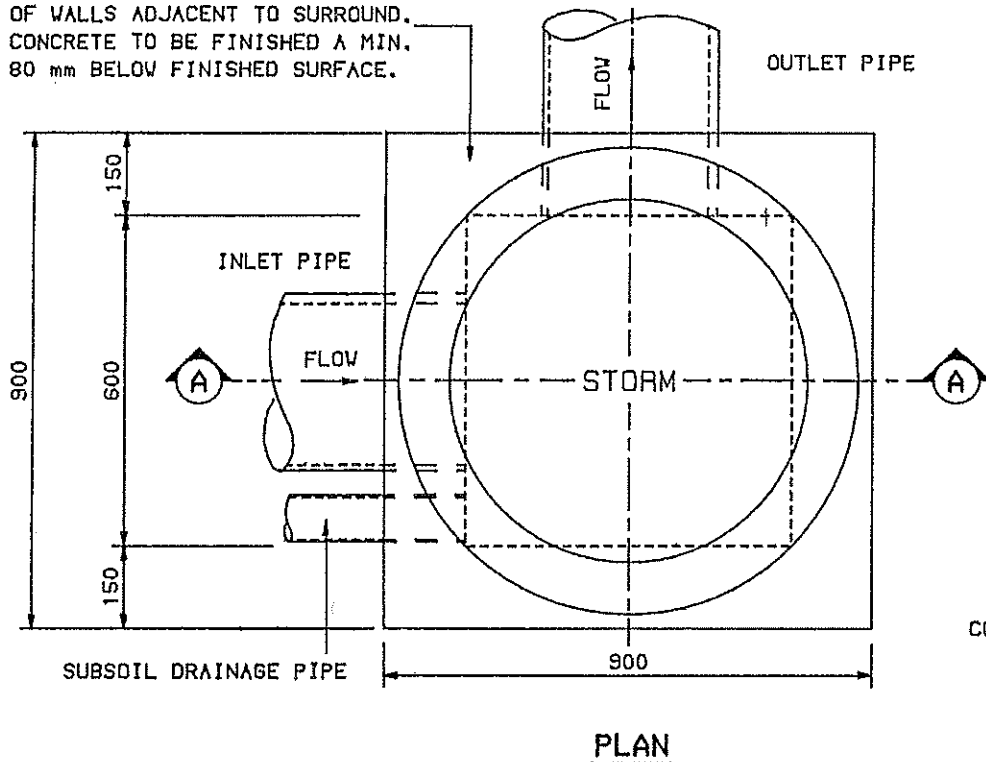


MASS CONCRETE PLACED ON TOP OF WALLS ADJACENT TO SURROUND. CONCRETE TO BE FINISHED A MIN. 80 mm BELOW FINISHED SURFACE.



NOTES:

1. ALL PRECAST COMPONENTS TO BE FACTORY PRODUCED.
2. MINIMUM CONCRETE COMPRESSIVE STRENGTH 25 MPa AT 28 DAYS.
3. MINIMUM PIPE DIAMETRE 150 mm.
4. PROVIDE 3 m OF 100 mm DIAMETRE SUBSOIL DRAINAGE PIPE WRAPPED IN FABRIC SOCK ADJACENT TO INLET PIPE.
5. A - 150 mm LIGHT DUTY PIPE  
- 200 mm HEAVY DUTY PIPE
6. ENSURE FACE OF PIPE IN PIT WALL ARE SMOOTHLY GROUTED
7. LIDS TO BE MARKED 'STORM' TO DISTINGUISH FROM UNMARKED SEWER LIDS.
8. FOURTY EIGHT (48) HOURS NOTICE IS TO BE GIVEN PRIOR TO THE PLACING OF CONCRETE TO ALLOW FOR INSPECTION BY COUNCIL'S OFFICER.

Fig. D5. Misc. 5



SCALE 1: N.T.S.

SUBDIVISION  
CODE

CITY OF SHOALHAVEN  
STANDARD INTERALLOTMENT  
DRAINAGE JUNCTION PIT

ENGINEERING WORKS  
MANAGER

DRAWN C. FIESELER

CHECKED J. BLOH

PLAN REF. 263705

DATE 05. MAY 1994