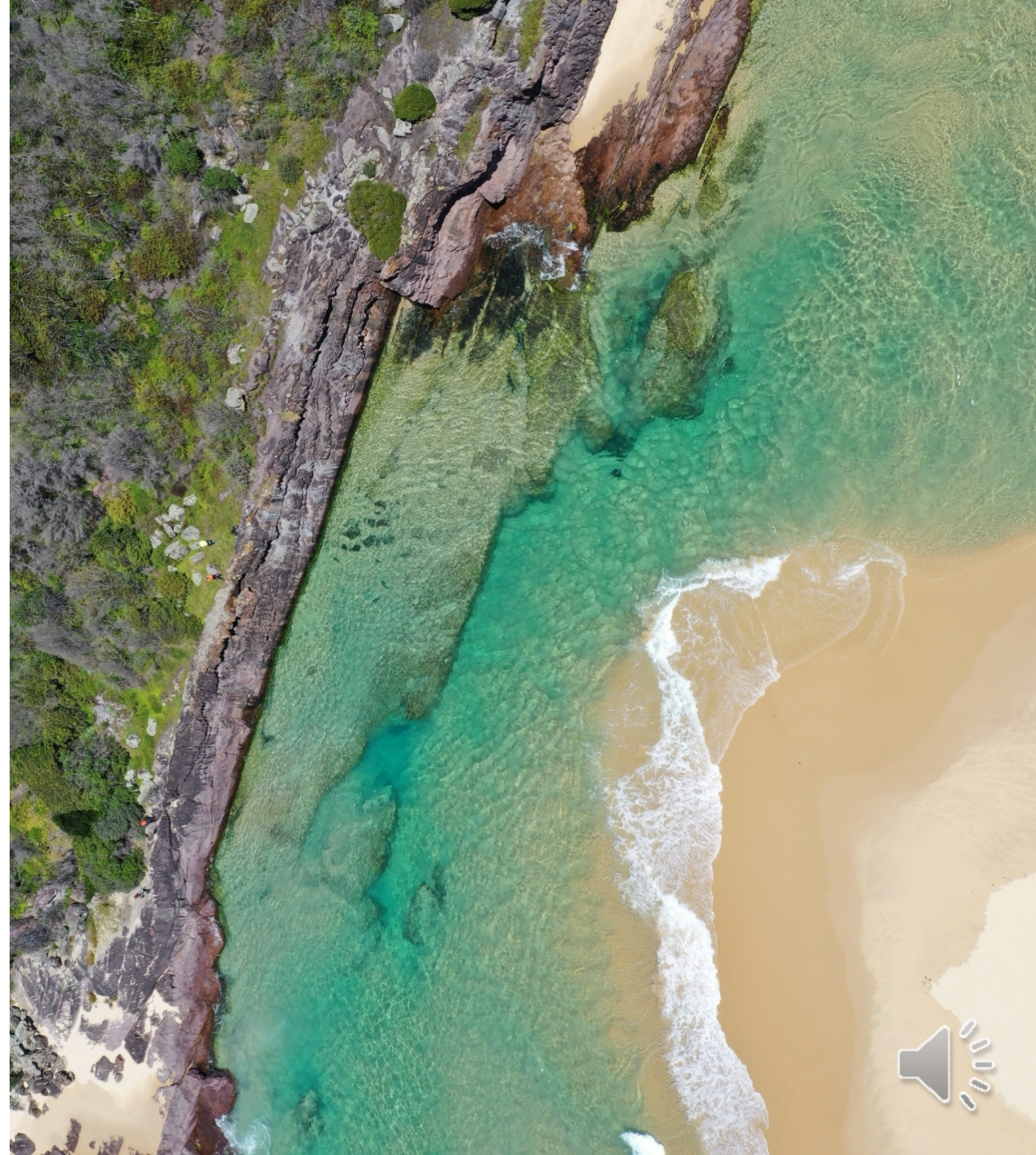


South East Catchments and Waterways Bushfire Recovery Plan

City of Shoalhaven overview

November 2021



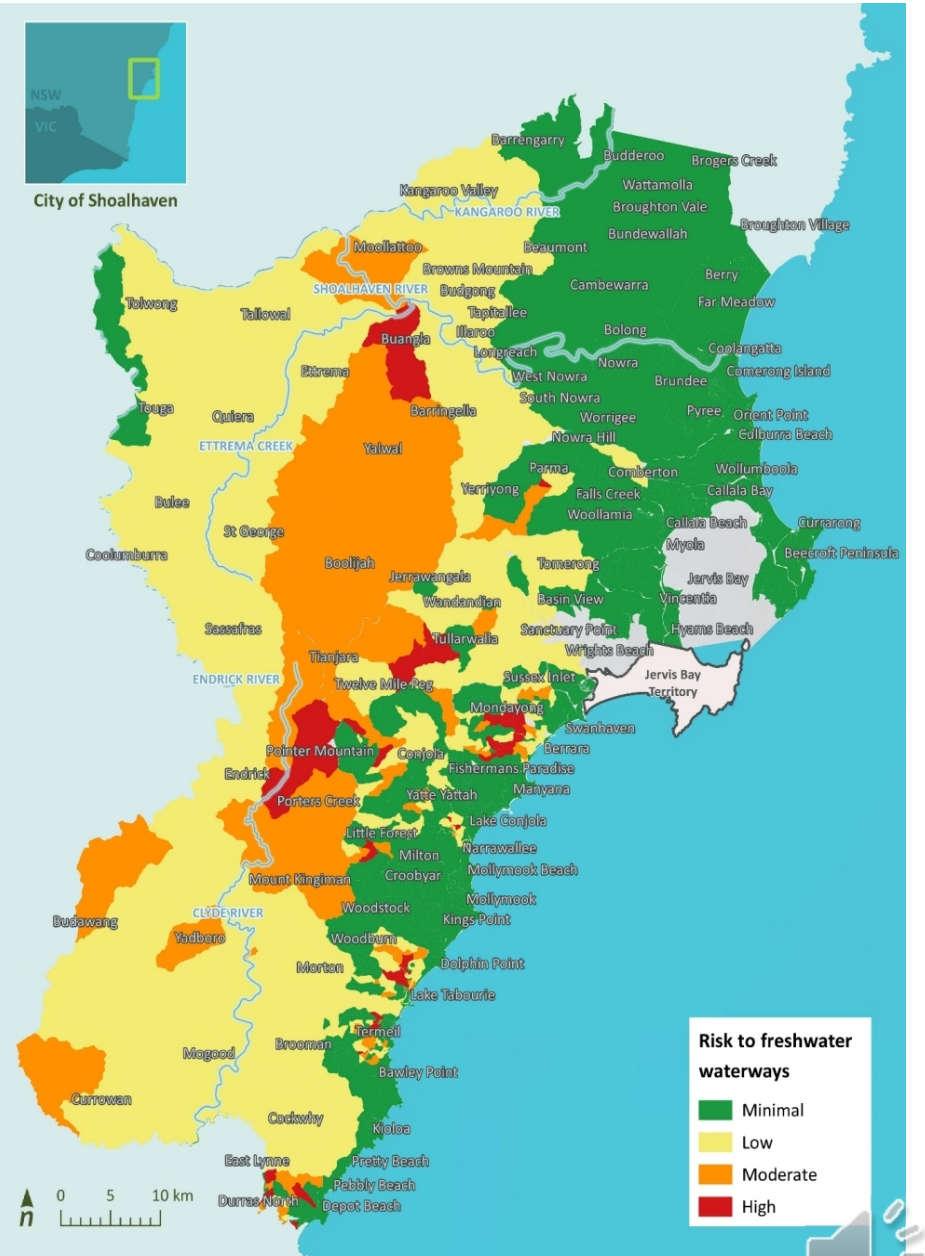
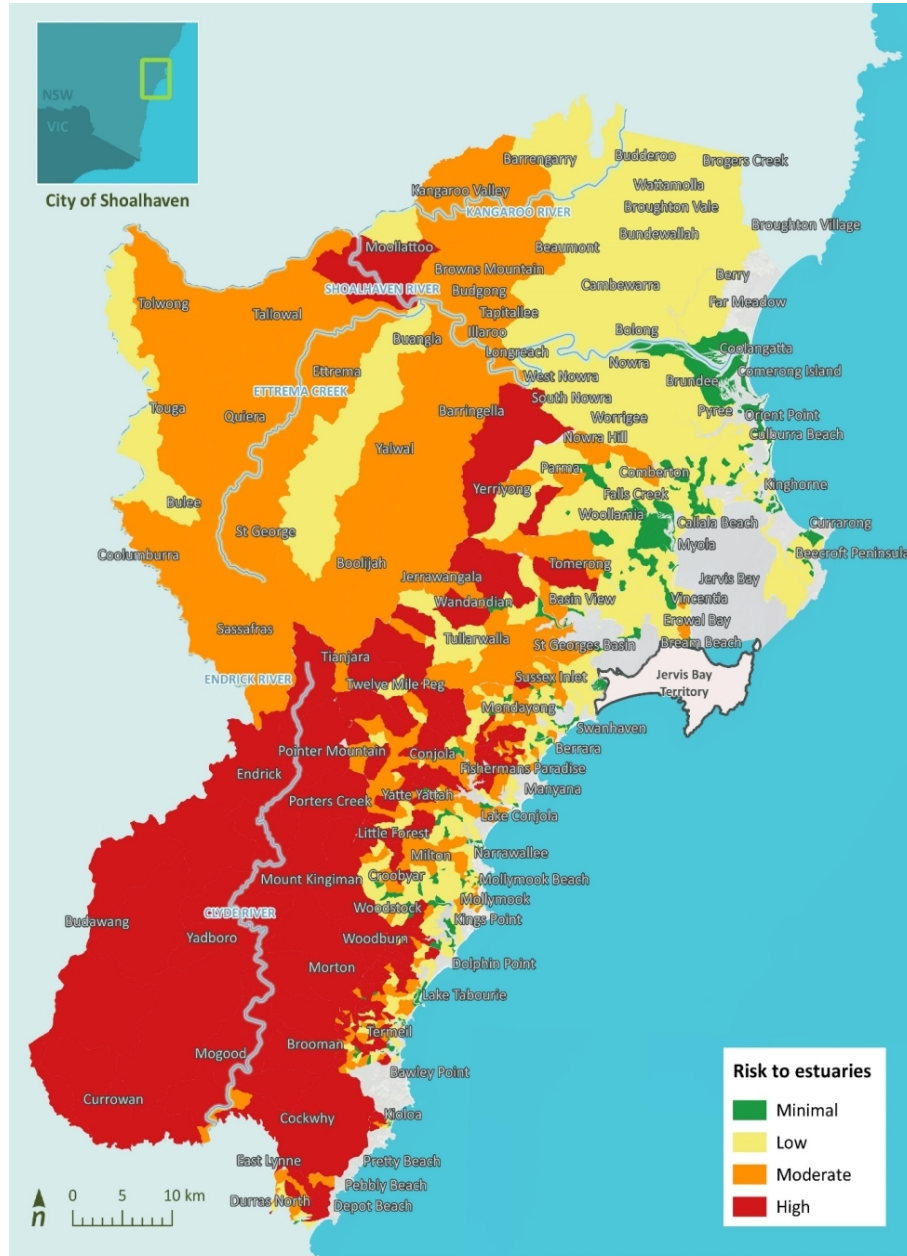
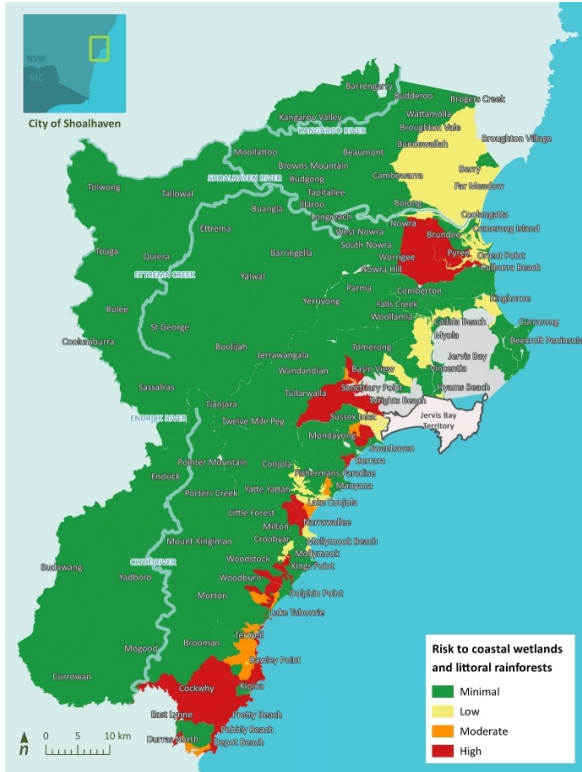


Alluvium recognises and acknowledges the unique relationship and deep connection to Country shared by Aboriginal and Torres Strait Islander people, as First Peoples and Traditional Owners of Australia. We pay our respects to their Cultures, Country and Elders past and present.

Artwork by Vicki Golding. This piece was commissioned by Alluvium and has told our story of water across Country, from catchment to coast, with people from all cultures learning, understanding, sharing stories, walking to and talking at the meeting places as one nation.



Risk assessment Environmental City of Shoalhaven



Coastal wetlands & littoral rainforests

Estuaries

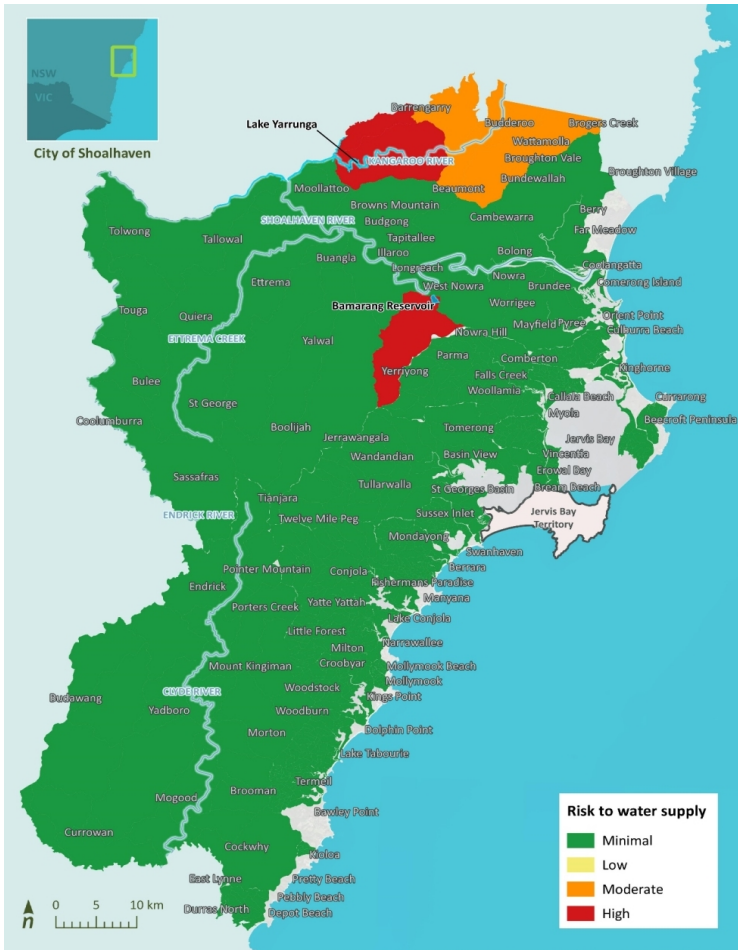
Freshwater waterways



Risk assessment

Socio-economic

City of Shoalhaven



Water supply



Tourism & recreation



Primary industries



Community resilience

Priority waterways

City of Shoalhaven

Multiple values at risk
Field observations
Agricultural land

Sparse riparian vegetation
Meandering sections in valleys
Stream Order - sediment storage

Catchment	ID	Priority type	Feature type	Description	Land tenure	Reasoning	Issue	Recommend	LGA	Bank	Length (m)	Environmental risk (4 = High risk)				Cumulative risk
												Estuaries	Freshwater	Wetlands	Environmental	
CLYDE RIVER	S01	1	Waterway	Clyde River at Currowan and Mogood (1)	FREEHOLD, SHALLOW CROSSING STATE FOREST	Stakeholder workshops; By extension of downstream priority sites	Bank erosion; degraded riparian vegetation; burnt habitat; stock access; weeds	Stock exclusion fencing; riparian revegetation	City of Shoalhaven	Right	1108	4	2	4	10	20
	S02	1	Waterway	Clyde River at Currowan and Mogood (2)	FREEHOLD, SHALLOW CROSSING STATE FOREST	Stakeholder workshops; By extension of downstream priority sites	Bank erosion; degraded riparian vegetation; burnt habitat; stock access; weeds	Stock exclusion fencing; riparian revegetation	City of Shoalhaven; Eurobodalla Shire	Left	2552	3	2	4	9	18
	S35	3	Road	Unsealed road at Brooman	FREEHOLD	Field assessments; Risk assessment (high risk for estuaries)	Erosion on road side/verge	Revegetation and complementary pest control	City of Shoalhaven	n/a	352	4	2	1	7	17
	S36	3	Road	Unsealed road at Yedboro	MORTON NATIONAL PARK	Field assessments	Erosion on road side/verge	Assess natural regeneration and complementary pest control	City of Shoalhaven	n/a	287	4	2	1	7	17
CONJOLA LAKE	S03	1	Waterway	Clyde River at Currowan and Mogood (3)	FREEHOLD	Stakeholder workshops; Field assessments; Risk assessment (high risk for wetlands)	Bank erosion; degraded riparian vegetation; burnt habitat; stock access; weeds	Stock exclusion fencing; riparian revegetation	City of Shoalhaven	Right	967	1	1	4	6	11
	S09	1	Waterway	Conjola Lake bank/foreshore	FREEHOLD	Stakeholder workshops; Field assessments	Stock access	Stock exclusion fencing	City of Shoalhaven	Left	1531	1	1	2	4	9
CURRAMBENE CREEK	S25	2	Waterway	Currambene Creek (near Jarvis Bay)	FREEHOLD	Stakeholder workshops; Historic land use pre-disposes to erosion	High erosion and sediment generation potential	Riparian revegetation, stock exclusion fencing	City of Shoalhaven	Both	3643	2	1	2	5	10

Sample of priority waterways table



Priority subcatchments

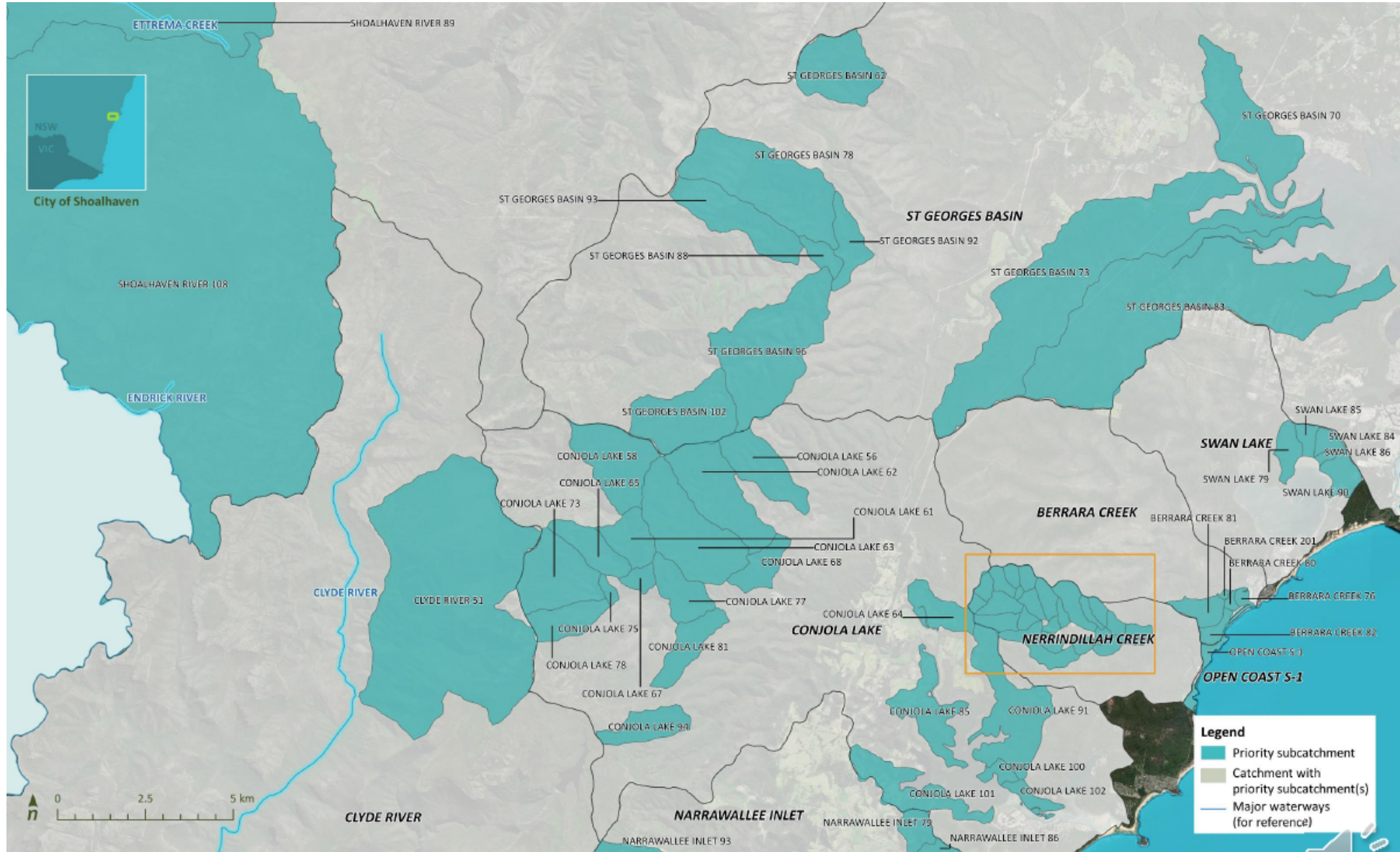
City of Shoalhaven – 138 total

Catchment	ID	LGA	LALC	Tenure - Simple	Tenure - Detailed	Reasoning	Weed species	Environmental risk (4 = High risk)			Cumulative risk	
								Estuaries	Freshwater	Wetlands	Environmental	All values
BERRARA CREEK	BERRARA CREEK 81	City of Shoalhaven	Jerrinja LALC	NPWS	CONJOLA NATIONAL PARK/RESERVE	Risk assessment	2	2	4	8	22	
	BERRARA CREEK 82	City of Shoalhaven	Jerrinja LALC	NPWS	CONJOLA NATIONAL PARK/RESERVE	Risk assessment	2	2	4	8	22	
	BERRARA CREEK 201	City of Shoalhaven	Jerrinja LALC	NPWS	CONJOLA NATIONAL PARK/RESERVE	Risk assessment	2	1	4	7	21	
	BERRARA CREEK 76	City of Shoalhaven	Jerrinja LALC	NPWS	CONJOLA NATIONAL PARK/RESERVE	Risk assessment	1	2	4	7	21	
	BERRARA CREEK 80	City of Shoalhaven	Jerrinja LALC	NPWS	CONJOLA NATIONAL PARK/RESERVE	Risk assessment	1	2	4	7	21	
BURRILL LAKE	BURRILL LAKE 108	City of Shoalhaven	Ulladulla LALC	FREEHOLD, CROWN LAND	FREEHOLD	Risk assessment	4	1	4	9	22	
	BURRILL LAKE 113	City of Shoalhaven	Ulladulla LALC	NPWS, STATE FOREST, CROWN LAND	MEROO NATIONAL PARK/RESERVE, WOODBURN STATE FOREST	Risk assessment	1	1	4	6	17	
	BURRILL LAKE 106	City of Shoalhaven	Ulladulla LALC	FREEHOLD, NPWS	FREEHOLD, MEROO NATIONAL PARK/RESERVE	Risk assessment	2	1	1	4	15	
	BURRILL LAKE 109	City of Shoalhaven	Ulladulla LALC	NPWS	MEROO NATIONAL PARK/RESERVE	Risk assessment	2	1	1	4	14	
	BURRILL LAKE 111	City of Shoalhaven	Ulladulla LALC	FREEHOLD, NPWS, STATE FOREST, CROWN LAND	FREEHOLD, MEROO NATIONAL PARK/RESERVE, WOODBURN STATE FOREST	Risk assessment	2	1	1	4	14	
BUTLERS CREEK	BUTLERS CREEK 50	City of Shoalhaven	Batemans Bay LALC	FREEHOLD, NPWS	FREEHOLD, MURRAMARANG NATIONAL PARK/RESERVE	Risk assessment	4	1	1	6	16	
	BUTLERS CREEK 52	City of Shoalhaven	Batemans Bay LALC	FREEHOLD, NPWS	FREEHOLD, MURRAMARANG NATIONAL PARK/RESERVE	Risk assessment	4	1	1	6	16	

Sample of priority subcatchments table



Priority subcatchments City of Shoalhaven



Priority coastal wetlands and littoral rainforest

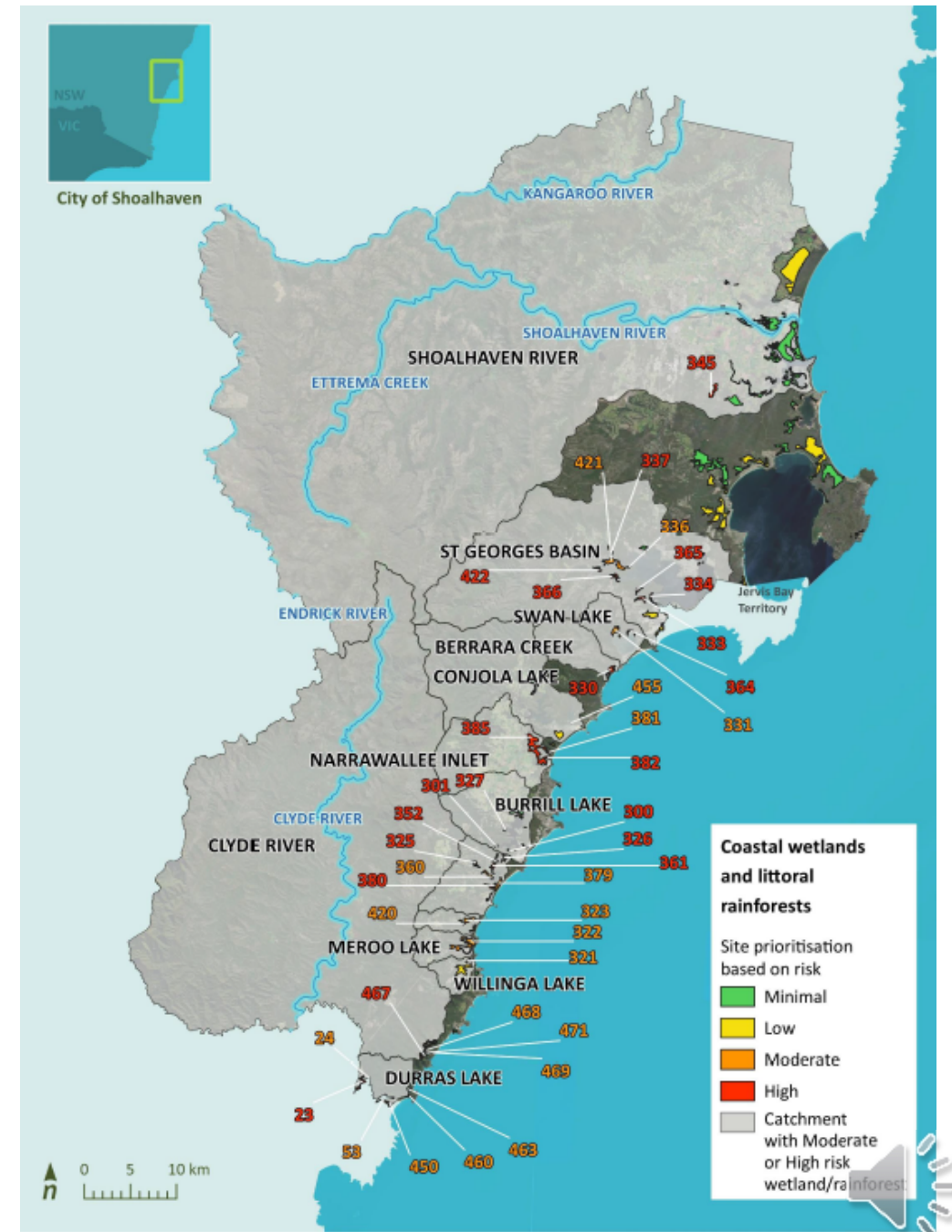
Burnt SEPP mapped Wetlands
 Burnt SEPP mapped Littoral Rainforest
 Impact Risk Assessment

Catchment	ID (Alluvium)	Number of subcatchments hosting wetlands	Risk/priority	Area (ha)	Notes
Berrara Creek	330	5	High	42	
	300	1	High	1	
Burrill Lake	301	1	High	3	
	327	1	High	2	
Durras Lake	23	8	High	43	Some of the area is within Eurobodalla Shire.
	24	1	Moderate	3	Half in Eurobodalla Shire, half in the City of Shoalhaven.
	53	8	Moderate	139	Most of the area is within Eurobodalla Shire.
Meroo Lake	322	20	Moderate	124	
	382	2	High	6	
Narrawallee Inlet	385	20	High	225	
	381	1	Moderate	10	
Shoalhaven River	345	1	High	48	The only priority wetland in this large catchment.

Sample of priority coastal wetlands table

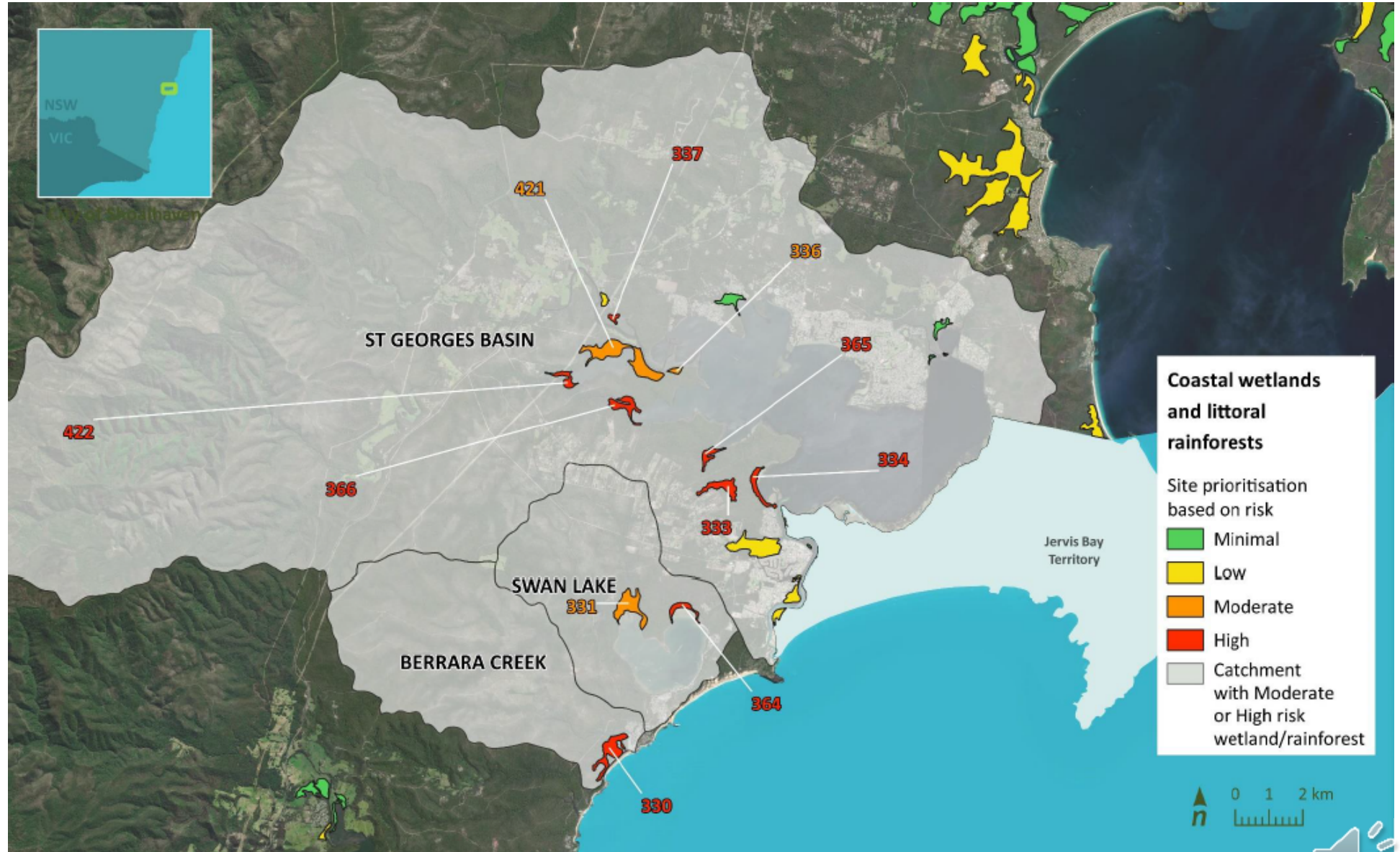
Catchment	ID (Alluvium)	Subcatchments	Area (ha)	Notes	Risk/priority
Clyde River	467	2	58	Highest priority. Extends into adjacent area that drains to the coast to the north of Durras Lake	High
Conjola Lake	455	2	<1	Small patch of rainforest on foreshore of lake.	Moderate
Durras Lake	450	1	2	Adjacent to a high priority coastal wetland (ID 53). Close to border with Eurobodalla Shire.	Moderate
	460	2	8	Mostly in catchment that drains to the coast < 0.2% in Durras Lake catchment.	Moderate

Sample of priority littoral rainforest table



Priority coastal wetlands and littoral rainforest

City of Shoalhaven



Next steps

- Identify opportunities for immediate on-ground actions – use risk scores or ranking in tables of priority subcatchments and waterways to select areas for field visits
 - Straightforward access
 - Willing landholders and communities
 - Coordinate with partner agencies
- Undertake site visits
 - Identify management options for site
 - Weed management
 - Structural works
 - Stock exclusion fencing
 - Revegetation
 - Proceed to design





Technical support and funding assistance for this project was provided by the
NSW Government under its

Bushfire Affected Coastal Waterways Program

Department of Planning, Industry and Environment

