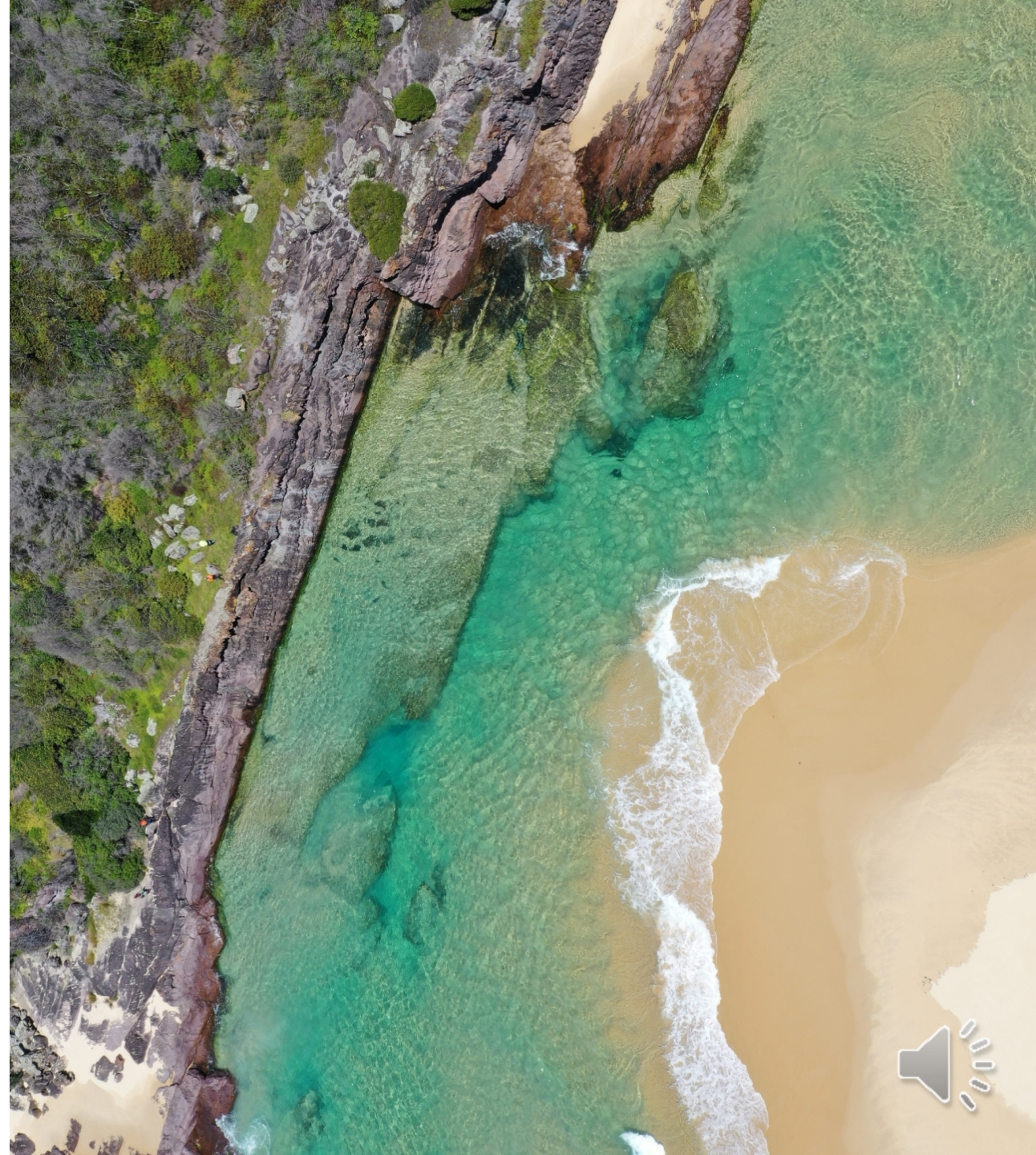


South East Catchments and Waterways Bushfire Recovery Plan

Eurobodalla Shire overview

November 2021



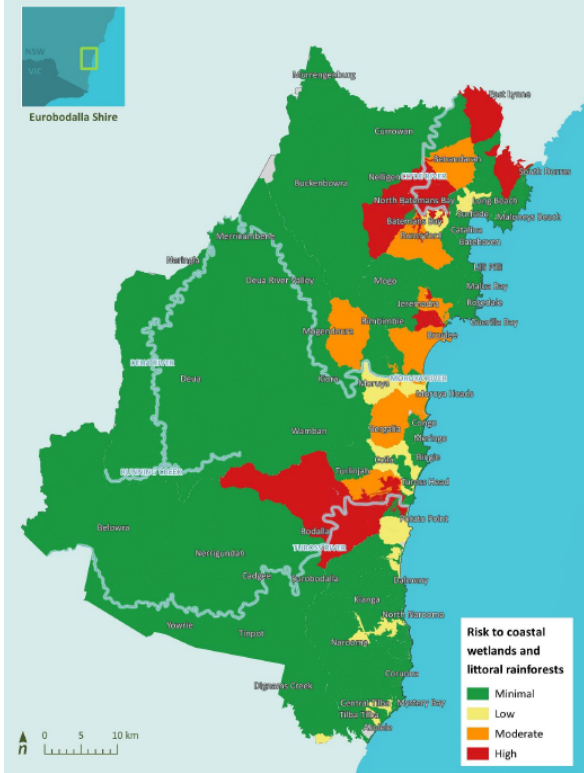


Alluvium recognises and acknowledges the unique relationship and deep connection to Country shared by Aboriginal and Torres Strait Islander people, as First Peoples and Traditional Owners of Australia. We pay our respects to their Cultures, Country and Elders past and present.

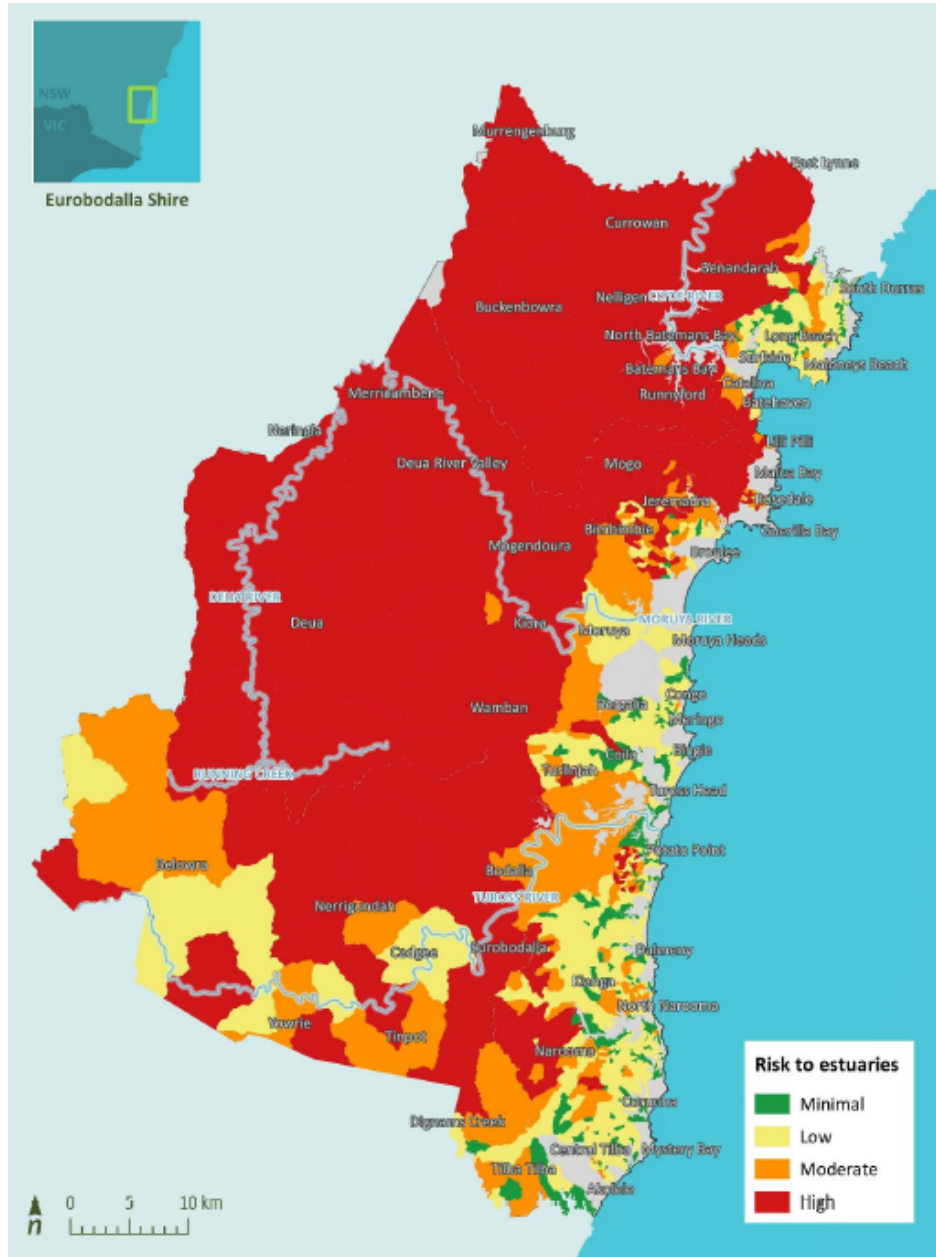
Artwork by Vicki Golding. This piece was commissioned by Alluvium and has told our story of water across Country, from catchment to coast, with people from all cultures learning, understanding, sharing stories, walking to and talking at the meeting places as one nation.



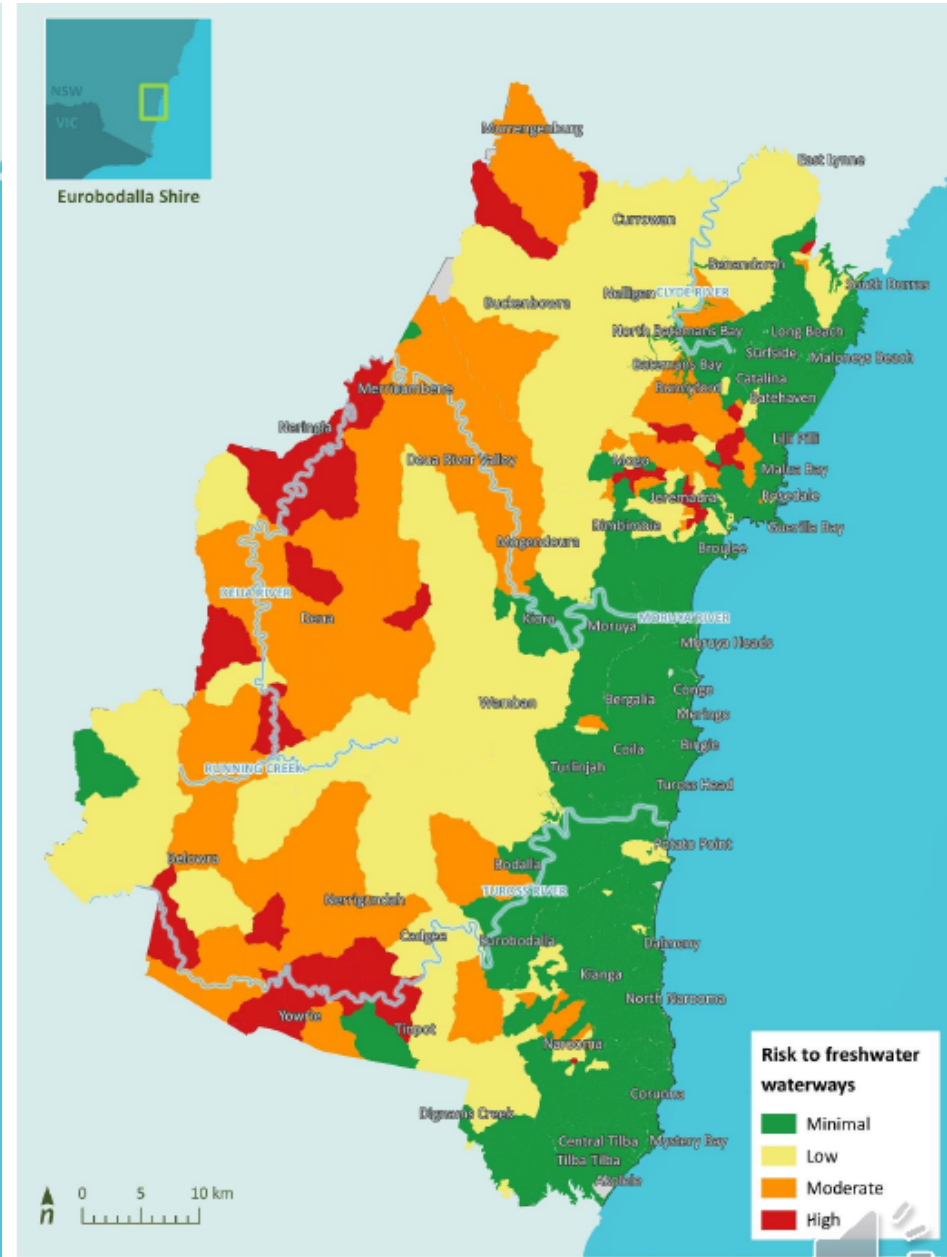
Risk assessment Environmental Eurobodalla Shire



Coastal wetlands & littoral rainforests



Estuaries



Freshwater waterways



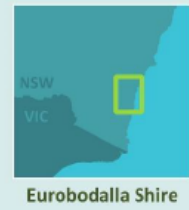
Risk assessment

Socio-economic

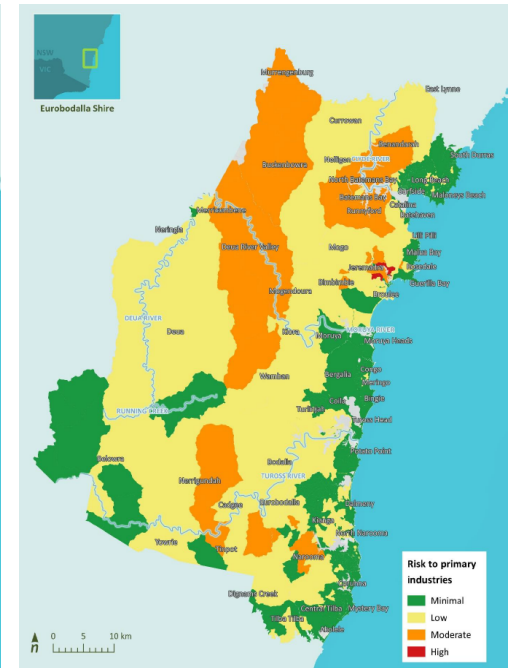
Eurobodalla Shire



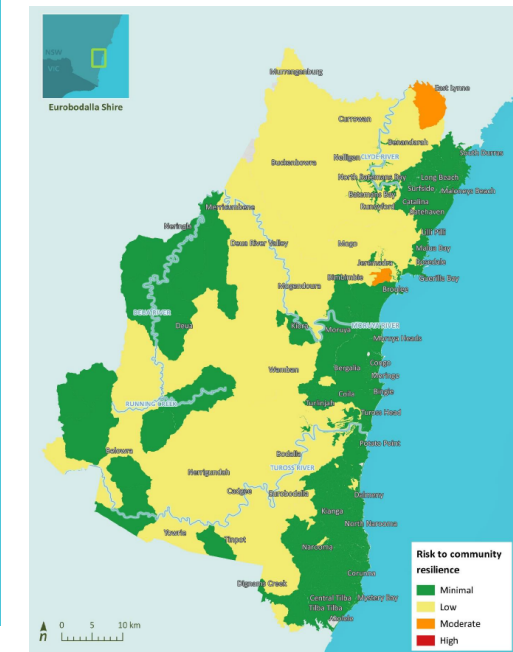
Water supply



Tourism & recreation



Primary industries



Community resilience



Priority waterways

Eurobodalla Shire

Multiple values at risk
Field observations
Agricultural land

Sparse riparian vegetation
Meandering sections in valleys
Stream Order - sediment storage

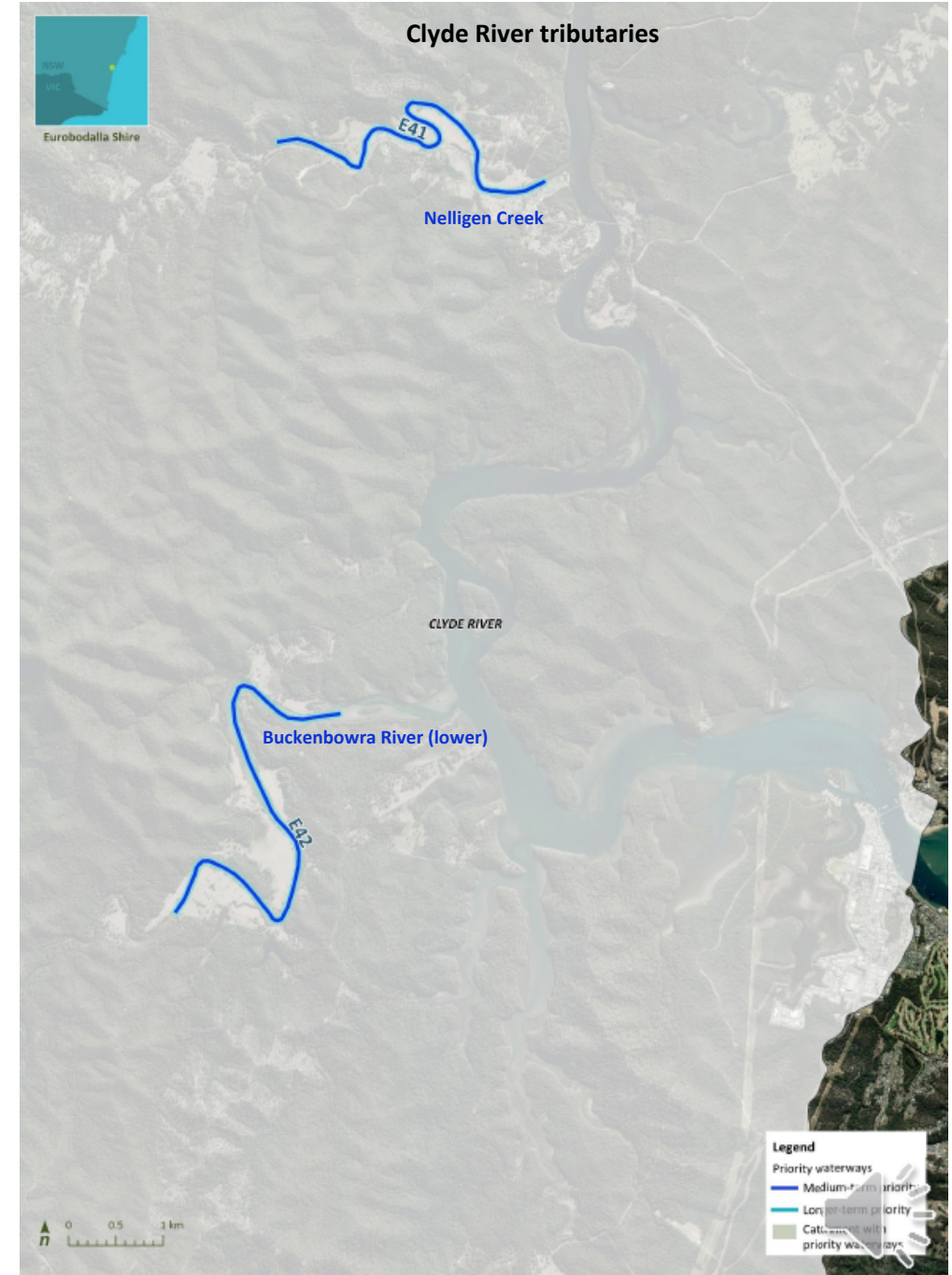
Catchment	ID	Priority type	Description	Land tenure	Reasoning	Issue	Recommend	LGA	Bank	Length (m)	Environmental risk (4 = High risk)				Cumulative risk
											Estuaries	Freshwater	Wetlands	Environmental	
CLYDE RIVER	E01	1	Clyde River at Currowan and Benandarah (1)	FREEHOLD	Stakeholder workshops; Field assessments; Risk assessment (high risk for estuaries and wetlands)	Bank erosion; degraded riparian vegetation; burnt habitat; stock access; weeds	Stock exclusion fencing; riparian revegetation	Eurobodalla Shire	Left	2111	4	2	4	10	20
	E03	1	Clyde River at Currowan and Benandarah (3)	FREEHOLD	Stakeholder workshops; Field assessments; Risk assessment (high risk for estuaries and wetlands)	Bank erosion; degraded riparian vegetation; burnt habitat; stock access; weeds	Stock exclusion fencing; riparian revegetation	Eurobodalla Shire	Right	1624	4	2	4	10	20
	E06	1	Clyde River at Currowan and Benandarah (6)	FREEHOLD	Stakeholder workshops; Field assessments; Risk assessment (high risk for estuaries and wetlands)	Bank erosion; degraded riparian vegetation; burnt habitat; stock access; weeds	Stock exclusion fencing; riparian revegetation	Eurobodalla Shire	Right	510	4	2	4	10	20
	E07	1	Clyde River at Currowan and Benandarah (7)	FREEHOLD	Stakeholder workshops; Field assessments; Risk assessment (high risk for estuaries and wetlands)	Bank erosion; degraded riparian vegetation; burnt habitat; stock access; weeds	Stock exclusion fencing; riparian revegetation	Eurobodalla Shire	Left	2088	4	2	4	10	20
	E08	1	Clyde River at Currowan and Benandarah (8)	FREEHOLD	Stakeholder workshops; Field assessments; Risk assessment (high risk for estuaries and wetlands)	Bank erosion; degraded riparian vegetation; burnt habitat; stock access; weeds	Stock exclusion fencing; riparian revegetation	Eurobodalla Shire	Right	1474	4	2	4	10	20

Sample of priority waterways table



Priority waterways

Eurobodalla Shire

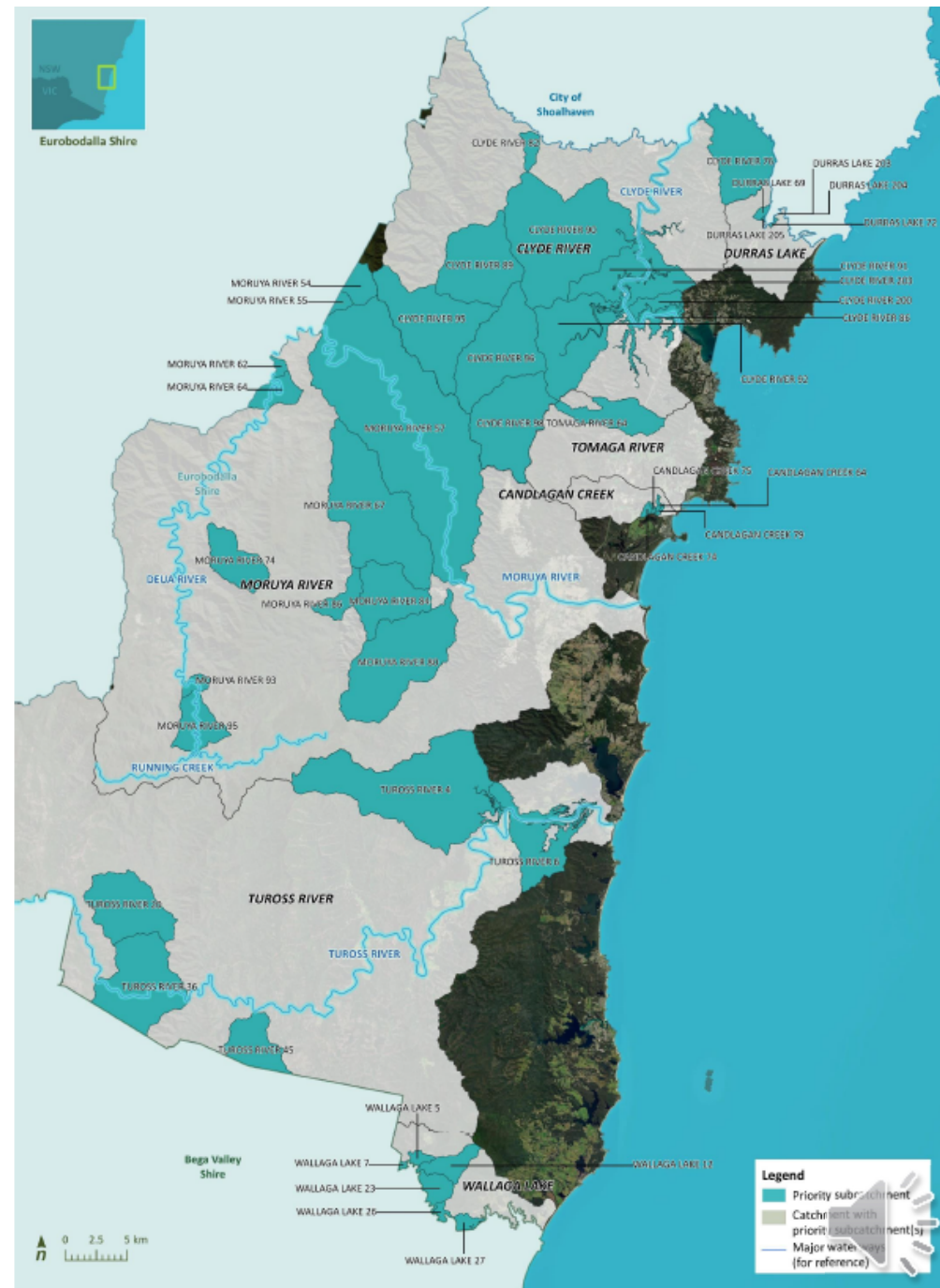


Priority subcatchments

Eurobodalla Shire

Catchment	ID	LGA	LALC	Tenure - Simple	Tenure - Detailed	Reasoning	Weed species	Environmental risk (4 = High risk)			Cumulative risk	
								Estuaries	Freshwater	Wetlands	Environmental	All values
CANDLAGAN CREEK	CANDLAGAN CREEK 64	Eurobodalla Shire	Mogo LALC	FREEHOLD, NPWS, CROWN LAND	FREEHOLD, ILLAWONG NATIONAL PARK/RESERVE	Priority waterways		2	2	4	8	20
	CANDLAGAN CREEK 79	Eurobodalla Shire	Mogo LALC	FREEHOLD, NPWS, CROWN LAND	FREEHOLD, ILLAWONG NATIONAL PARK/RESERVE	Risk assessment		2	2	4	8	20
	CANDLAGAN CREEK 74	Eurobodalla Shire	Mogo LALC	NPWS, CROWN LAND, EUROBODALLA SHIRE COUNCIL	ILLAWONG NATIONAL PARK/RESERVE	Risk assessment; Priority waterways		2	1	4	7	19
	CANDLAGAN CREEK 75	Eurobodalla Shire	Mogo LALC	FREEHOLD, NPWS, CROWN LAND, EUROBODALLA SHIRE COUNCIL	FREEHOLD, ILLAWONG NATIONAL PARK/RESERVE	Risk assessment		1	1	4	6	17
CLYDE RIVER	CLYDE RIVER 203	Eurobodalla Shire	Batemans Bay LALC	FREEHOLD, NPWS, STATE FOREST, CROWN LAND, EUROBODALLA SHIRE COUNCIL	FREEHOLD, CLYDE RIVER NATIONAL PARK/RESERVE, BENANDARAH STATE FOREST	Field assessments		4	3	4	11	25
	CLYDE RIVER 76	Eurobodalla Shire City of Shoalhaven	Batemans Bay LALC, City of Shoalhaven Batemans Bay LALC	FREEHOLD, NPWS, STATE FOREST, CROWN LAND	FREEHOLD, MURRAMARANG, MURRAMARANG NATIONAL PARK/RESERVE, SOUTH BROOMAN, KIOLOA, SOUTH BROOMAN, BOYNE STATE FOREST	Risk assessment; Field assessments	Inkweed, Blackberry sp., Fleabane, Purple top	4	2	4	10	22
	CLYDE RIVER 91	Eurobodalla Shire	Batemans Bay LALC	FREEHOLD, NPWS, STATE FOREST, CROWN LAND	FREEHOLD, CLYDE RIVER NATIONAL PARK/RESERVE, BOLARO STATE FOREST	Field assessments; Risk assessment	Inkweed	4	2	4	10	23
	CLYDE RIVER 92	Eurobodalla Shire	Mogo LALC, Batemans Bay LALC	FREEHOLD, NPWS, STATE FOREST, CROWN LAND	FREEHOLD, CLYDE RIVER NATIONAL PARK/RESERVE, BOLARO, MOGO STATE FOREST	Stakeholder workshops; Field assessments; Risk assessment; Priority waterways	Inkweed	4	2	4	10	22
	CLYDE RIVER 82	Eurobodalla Shire	Batemans Bay LALC, Batemans Bay LALC	FREEHOLD, NPWS, STATE FOREST, CROWN LAND	FREEHOLD, MONGA NATIONAL PARK/RESERVE, CURROWAN STATE FOREST	Risk assessment		4	4	1	9	19
	CLYDE RIVER 200	Eurobodalla Shire	Batemans Bay LALC	FREEHOLD, NPWS, CROWN LAND	FREEHOLD, CLYDE RIVER NATIONAL PARK/RESERVE	Risk assessment		4	1	4	9	23
	CLYDE RIVER 86	Eurobodalla Shire City of Shoalhaven	Mogo LALC, Batemans Bay LALC, Batemans Bay LALC	FREEHOLD, NPWS, STATE FOREST, CROWN LAND	FREEHOLD, CLYDE RIVER NATIONAL PARK/RESERVE, SHALLOW CROSSING, SOUTH BROOMAN, BOLARO, BENANDARAH, CURROWAN, BOYNE, MOGO STATE FOREST	Risk assessment	Norfolk Island pine, Kikuyu, Thistle sp., Inkweed	4	2	3	9	22

Sample of priority subcatchments table

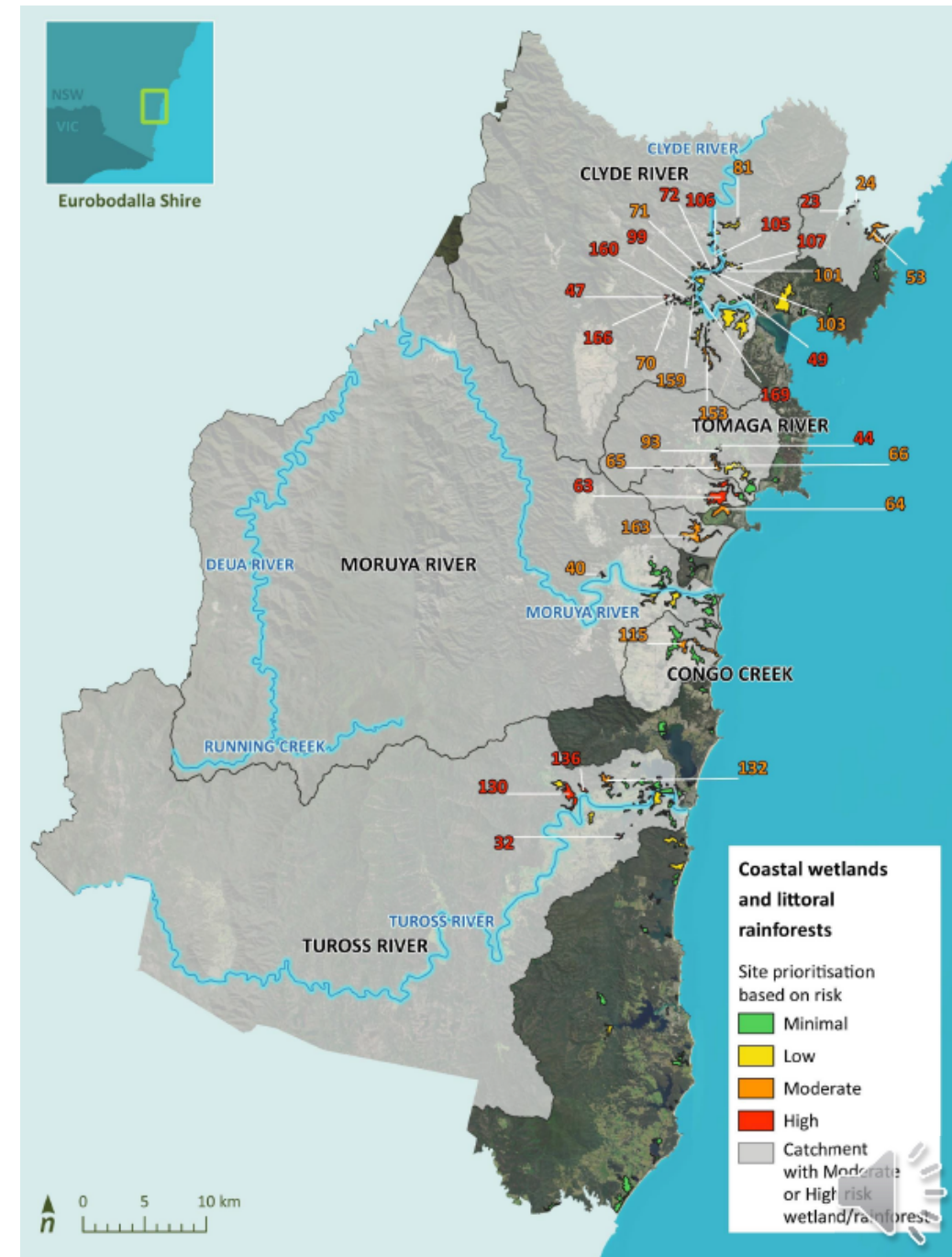


Priority coastal wetlands and littoral rainforest

Burnt SEPP mapped Wetlands
 Burnt SEPP mapped Littoral Rainforest
 Impact Risk Assessment

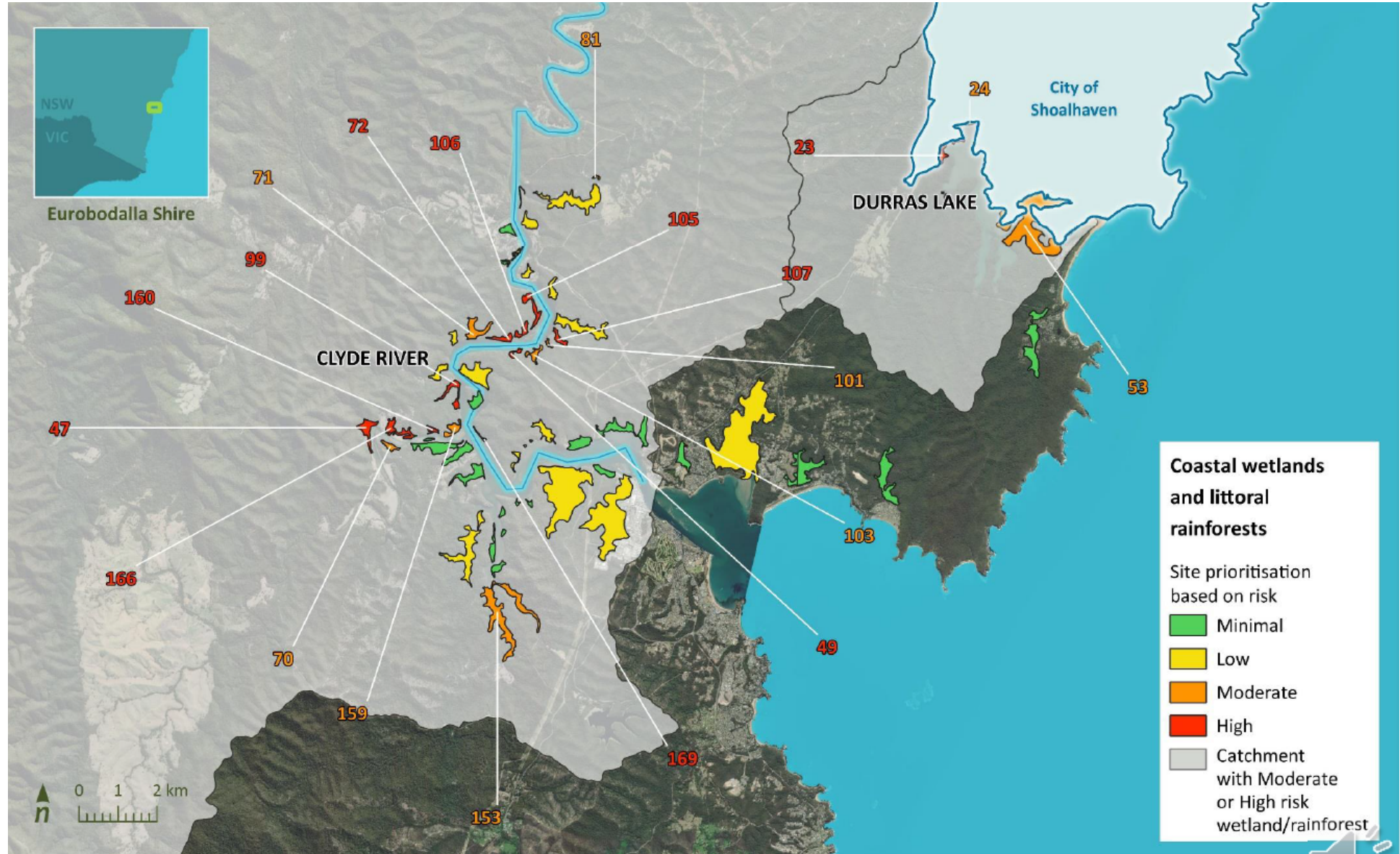
Catchment	Wetland ID (Alluvium)	Number of subcatchments hosting wetlands	Risk/priority	Type	Area (ha)	Notes
Durras Lake	23	4	High	Coastal wetland	44	Most of the area is within the City of Shoalhaven.
	24	1	Moderate	Coastal wetland	3	Half in Eurobodalla Shire, half in the City of Shoalhaven.
	53	12	Moderate	Coastal wetland	140	Some of the area is within the City of Shoalhaven.
Tuross River	32	1	High	Coastal wetland	12	
	130	2	High	Coastal wetland	103	
	136	1	High	Coastal wetland	16	
Moruya River	132	1	Moderate	Coastal wetland	54	
	40	1	Moderate	Coastal wetland	9	
	44	1	High	Coastal wetland	0.6	
Tomaga River	65	6	Moderate	Coastal wetland	36	
	66	2	Moderate	Coastal wetland	9	
	93	1	Moderate	Coastal wetland	1	
Candlagan Creek	63	18	High	Coastal wetland	190	
	64	1	Moderate	Coastal wetland	69	
	47	1	High	Coastal wetland	13	
	49	1	High	Coastal wetland	3	
	72	1	High	Coastal wetland	6	
	99	1	High	Coastal wetland	10	
	105	1	High	Coastal wetland	10	
	106	1	High	Coastal wetland	6	
	107	2	High	Coastal wetland	5	
	Clyde River	160	1	High	Coastal wetland	3
166		1	High	Coastal wetland	13	
169		2	High	Coastal wetland	1	

Sample of priority coastal wetlands table



Priority coastal wetlands and littoral rainforest

Eurobodalla Shire



Next steps

- Identify opportunities for immediate on-ground actions – use risk scores or ranking in tables of priority subcatchments and waterways to select areas for field visits
 - Straightforward access
 - Willing landholders and communities
 - Coordinate with partner agencies
- Undertake site visits
 - Identify management options for site
 - Weed management
 - Structural works
 - Stock exclusion fencing
 - Revegetation
 - Proceed to design





Technical support and funding assistance for this project was provided by the
NSW Government under its

Bushfire Affected Coastal Waterways Program

Department of Planning, Industry and Environment

