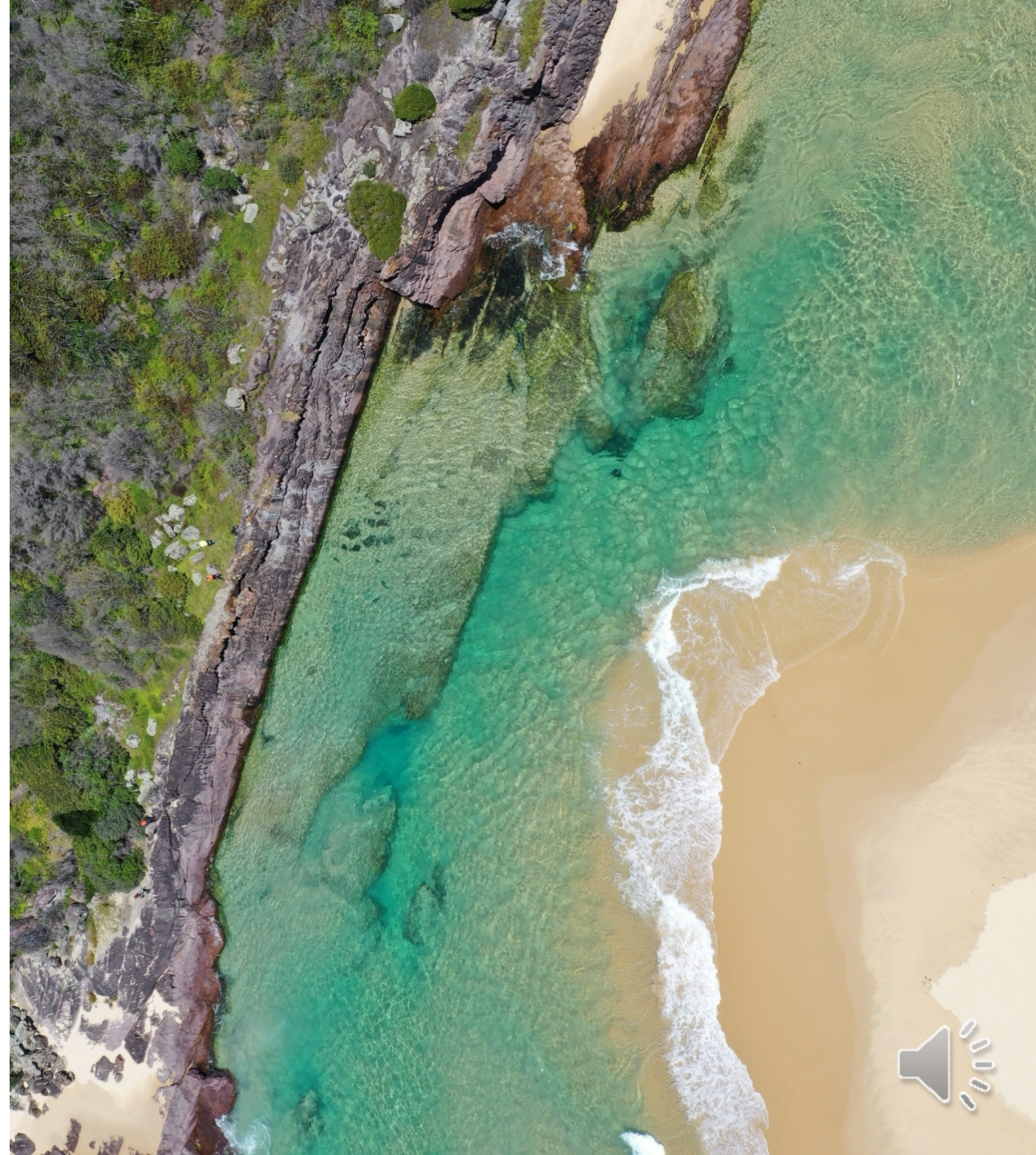


# South East Catchments and Waterways Bushfire Recovery Plan

Bega Valley Shire overview

November 2021



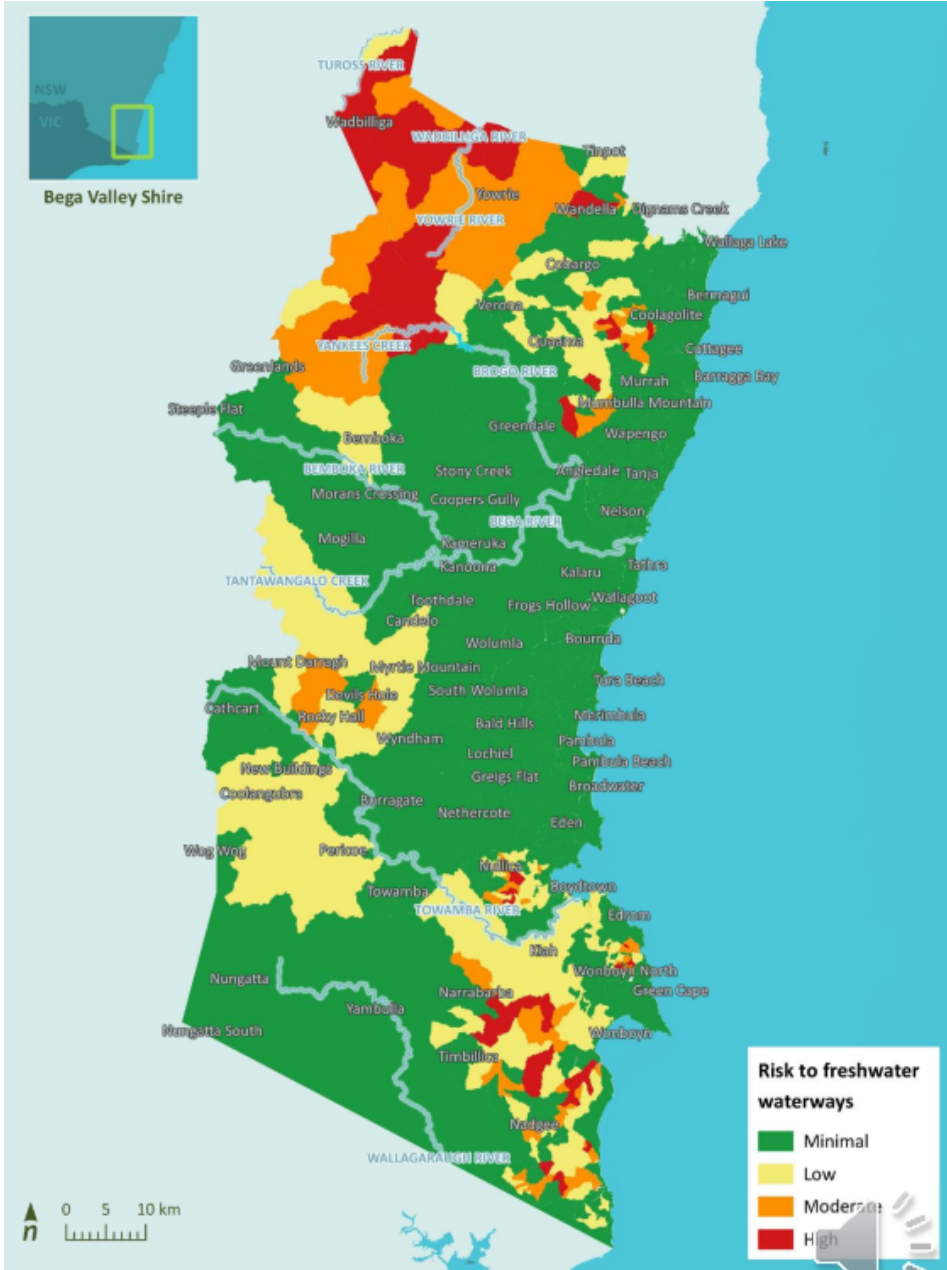
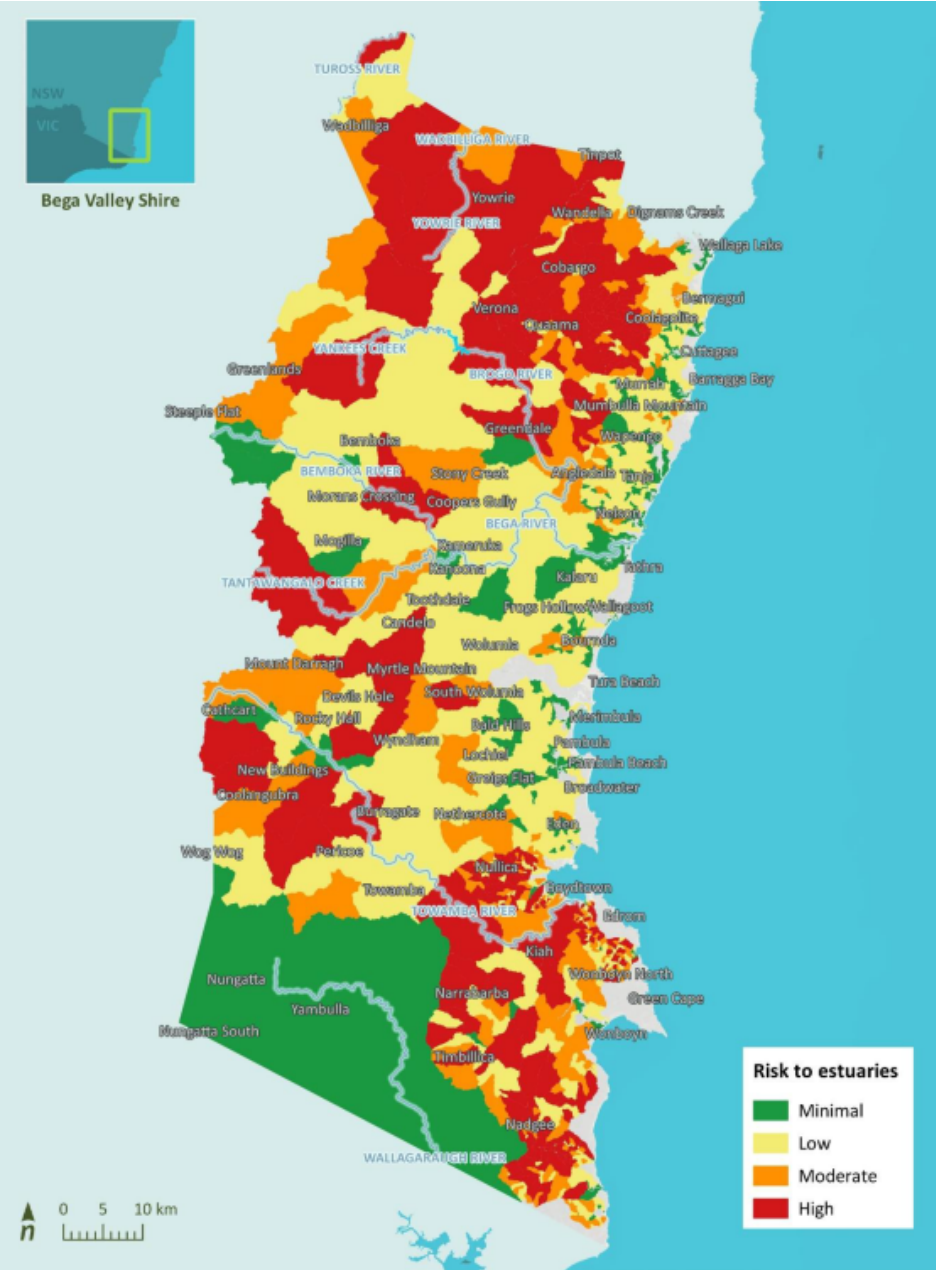
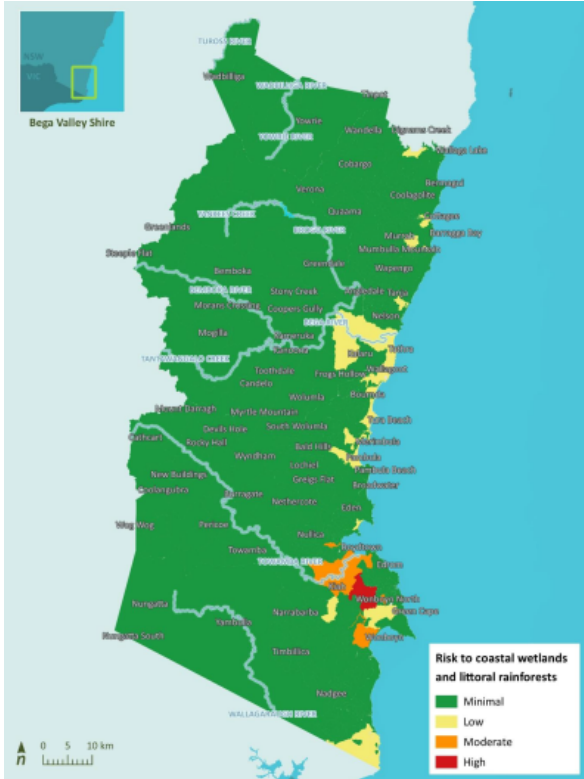


Alluvium recognises and acknowledges the unique relationship and deep connection to Country shared by Aboriginal and Torres Strait Islander people, as First Peoples and Traditional Owners of Australia. We pay our respects to their Cultures, Country and Elders past and present.

*Artwork by Vicki Golding. This piece was commissioned by Alluvium and has told our story of water across Country, from catchment to coast, with people from all cultures learning, understanding, sharing stories, walking to and talking at the meeting places as one nation.*



# Risk assessment Environmental Bega Valley Shire



Coastal wetlands & littoral rainforests

Estuaries

Freshwater waterways

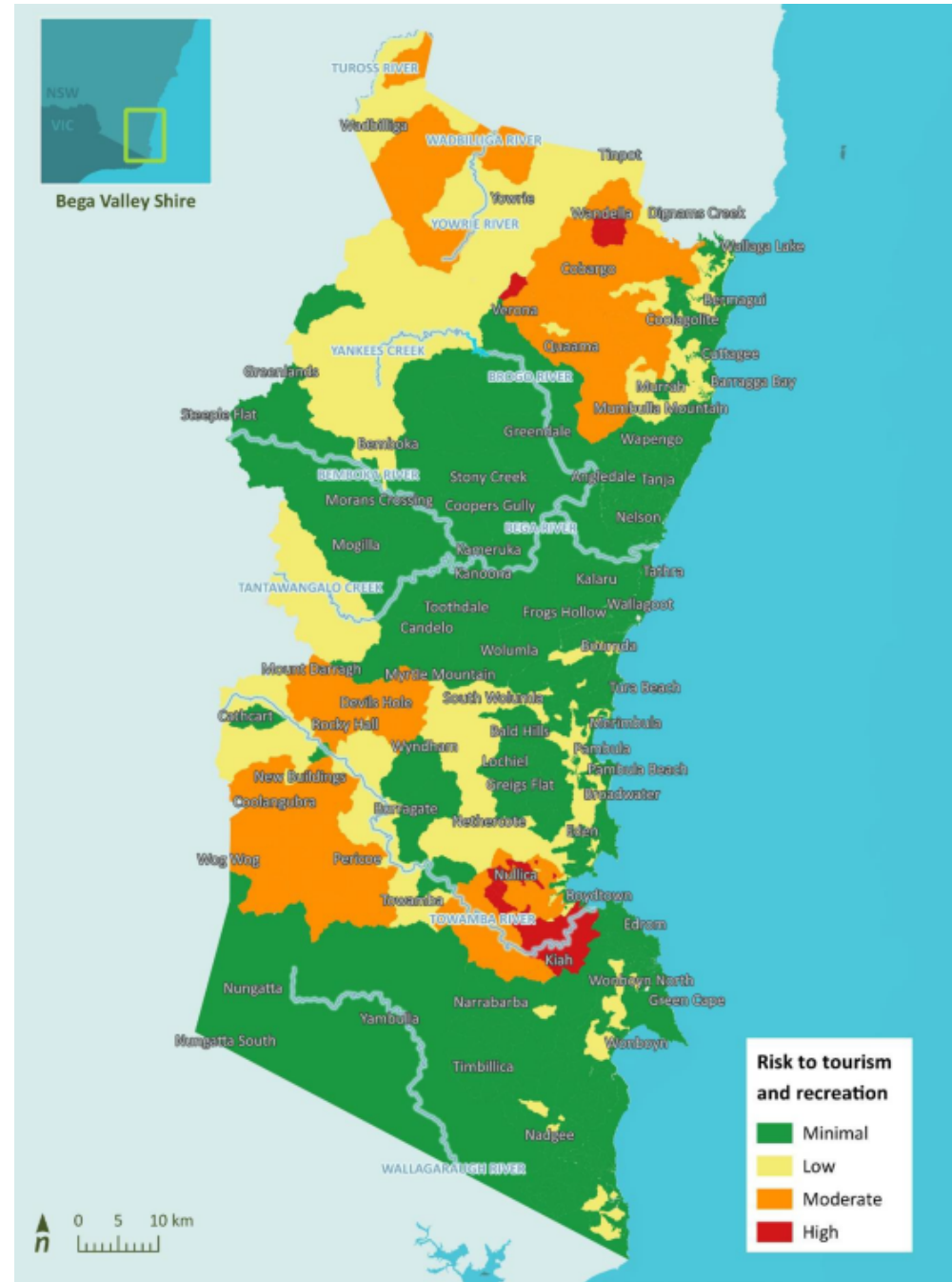
# Risk assessment

## Socio-economic

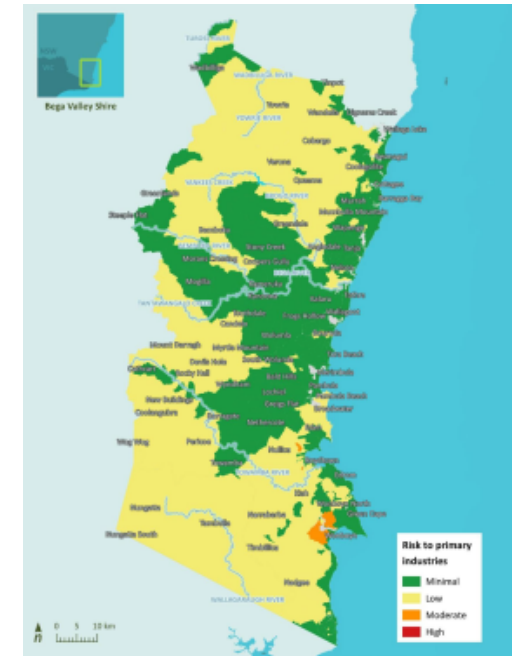
### Bega Valley Shire



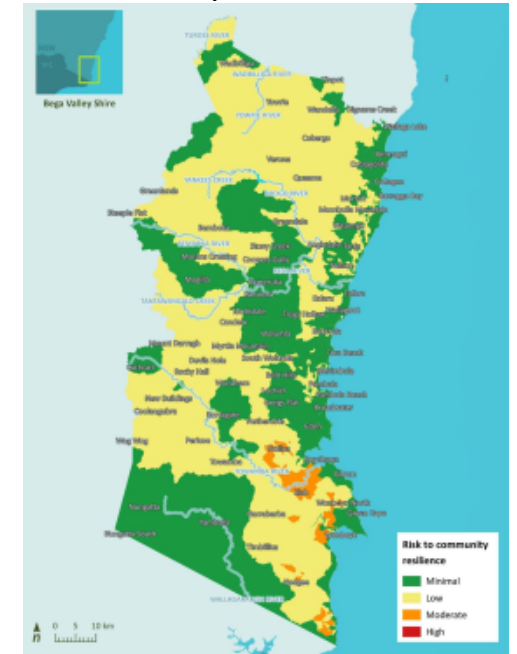
Water supply



Tourism & recreation



Primary industries



Community resilience



# Priority waterways

## Bega Valley Shire

Multiple values at risk  
Field observations  
Agricultural land

Sparse riparian vegetation  
Meandering sections in valleys  
Stream Order - sediment storage

Catchment	ID	Priority type	Description	Land tenure	Reasoning	Issue	Recommend	LGA	Bank	Length (m)	Environmental risk (4 = High risk)			Cumulative risk		
											Estuaries	Freshwater	Wetlands	Environmental	All values	
TOWAMBA RIVER	B03	1	Towamba River at Kiah	FREEHOLD	Natural sediment deposition sites	Increased sediment deposition	Riparian revegetation, stock exclusion fencing, instream revegetation	Bega Valley Shire	Both	15669	4	2	3	9	22	
	B04	1	Towamba River at East Boyd	FREEHOLD, EAST BOYD State Forest	Stakeholder workshops; Natural sediment deposition sites, easy access, nearby community	Stock access; sediment deposits	Riparian revegetation, stock exclusion fencing, instream vegetation	Bega Valley Shire	Both	7666	4	2	3	9	22	
	B05	2	Towamba River at Towamba	FREEHOLD	Stakeholder workshops; Natural sediment deposition sites, easy access, nearby community	Increased sediment deposition	Riparian revegetation, stock exclusion fencing, instream vegetation	Bega Valley Shire	Both	8620	4	2	1	7	17	
	B08	2	Towamba River at New Buildings	FREEHOLD	Natural sediment deposition sites	Stock access; sediment deposits	Riparian revegetation, stock exclusion fencing	Bega Valley Shire	Both	8571	3	3	1	7	16	
	B09	2	Stockyard Creek	FREEHOLD	Natural sediment deposition sites	Stock access; sediment deposits	Riparian revegetation, stock exclusion fencing	Bega Valley Shire	Both	1657	3	3	1	7	16	
	B07	2	Towamba River at Burragate	FREEHOLD	Natural sediment deposition sites	Stock access; sediment deposits	Riparian revegetation, stock exclusion fencing	Bega Valley Shire	Both	3593	4	1	1	6	14	
	B06	2	Jingo Creek (Towamba River tributary)	FREEHOLD	Natural sediment deposition sites	Stock access; sediment deposits	Riparian revegetation, stock exclusion fencing	Bega Valley Shire	Both	4717	2	1	1	4	9	
	B10	2	Towamba River at Rocky Hall	FREEHOLD	Natural sediment deposition sites	Increased sediment deposition	Riparian revegetation, stock exclusion fencing, instream vegetation	Bega Valley Shire	Both	3102	2	1	1	4	11	
	TUROSS RIVER	B19	2	Yowie River and tributaries (upper Tuross)	FREEHOLD, WANDELLA State Forest	Stakeholder workshops; Field assessments; Risk assessment (high risk for estuaries and freshwater waterways)	Erosion (rills) and sediment in headwaters	Riparian revegetation, stock exclusion fencing	Bega Valley Shire	Both	10803	4	4	1	9	19
		B18	2	Wandella Creek	FREEHOLD	Natural sediment deposition site	Increased sediment deposition	Riparian revegetation, stock exclusion fencing, instream revegetation	Bega Valley Shire	Both	8333	4	3	1	8	16
WALLAGA LAKE	B13	2	Narira Creek	FREEHOLD	Historic land use predisposes to erosion	High erosion and sediment generation potential	Riparian revegetation, stock exclusion fencing	Bega Valley Shire	Both	10086	4	2	1	7	17	

Sample of priority waterways table



# Priority waterways

Bega Valley Shire



# Priority subcatchments

## Bega Valley Shire

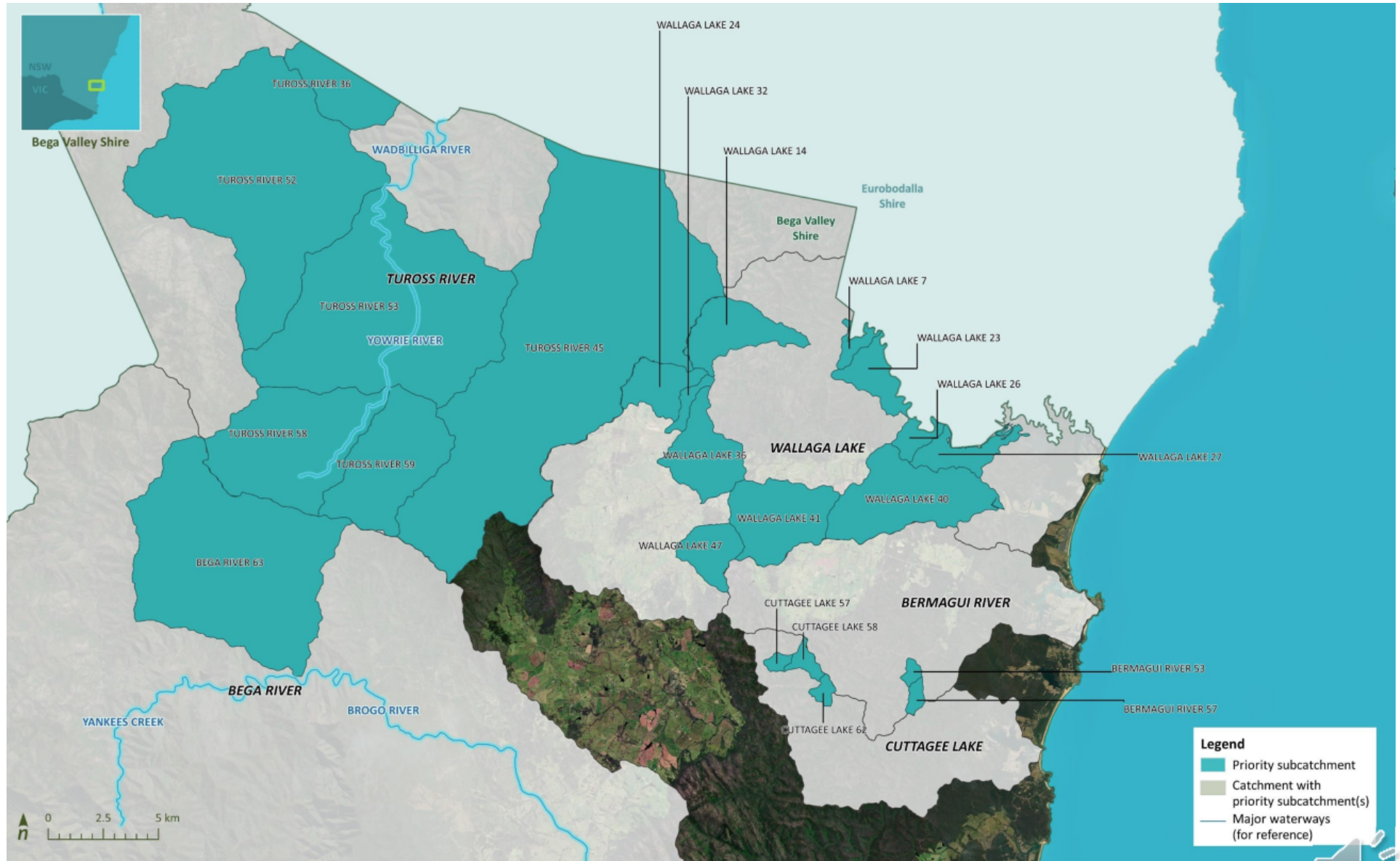
Catchment	ID	LGA	LALC	Tenure - Simple	Tenure - Detailed	Reasoning	Weed species	Environmental risk (4 = High risk)			Cumulative risk	
								Estuaries	Freshwater	Wetlands	Environmental	All values
BEGA RIVER	BEGA RIVER 63	Bega Valley Shire	Merrimans LALC	FREEHOLD, NPWS	FREEHOLD, WADBILLIGA NATIONAL PARK/RESERVE	Field assessments; Risk assessment	Blackberry, Salix fragilis, Kikuyu, Verbascum thapsus.	4	4	1	9	21
	BEGA RIVER 112	Bega Valley Shire	Merrimans LALC	FREEHOLD, NPWS, STATE FOREST	FREEHOLD, SOUTH EAST FOREST NATIONAL PARK, TANTAWANGALO STATE FOREST, GLENBOG STATE FOREST	Field assessments; Risk assessment	Fleabane	4	2	1	7	15
	BEGA RIVER 79	Bega Valley Shire	Merrimans LALC	FREEHOLD, NPWS	FREEHOLD, WADBILLIGA NATIONAL PARK/RESERVE, SOUTH EAST FOREST NATIONAL PARK	Aboriginal consultation	Fireweed, Bidens sp., Verbascum Thapsus, Purple top, fleabane, Inkweed, Kikuyu.	2	2	1	5	13
	BEGA RIVER 86	Bega Valley Shire	Merrimans LALC	FREEHOLD, NPWS	FREEHOLD, SOUTH EAST FOREST NATIONAL PARK	Aboriginal consultation	Inkweed, Blackberry, Blackberry nightshade, Fleabane, Purple top, Kikuyu, Thistle, Salix fragilis	2	1	1	4	11
BERMAGUI RIVER	BERMAGUI RIVER 53	Bega Valley Shire	Merrimans LALC	NPWS	BIAMANGA NATIONAL PARK/RESERVE	Risk assessment		4	4	1	9	19
	BERMAGUI RIVER 57	Bega Valley Shire	Merrimans LALC	NPWS	BIAMANGA NATIONAL PARK/RESERVE	Risk assessment		4	4	1	9	19

Sample of priority subcatchments table



# Priority subcatchments

Bega Valley Shire

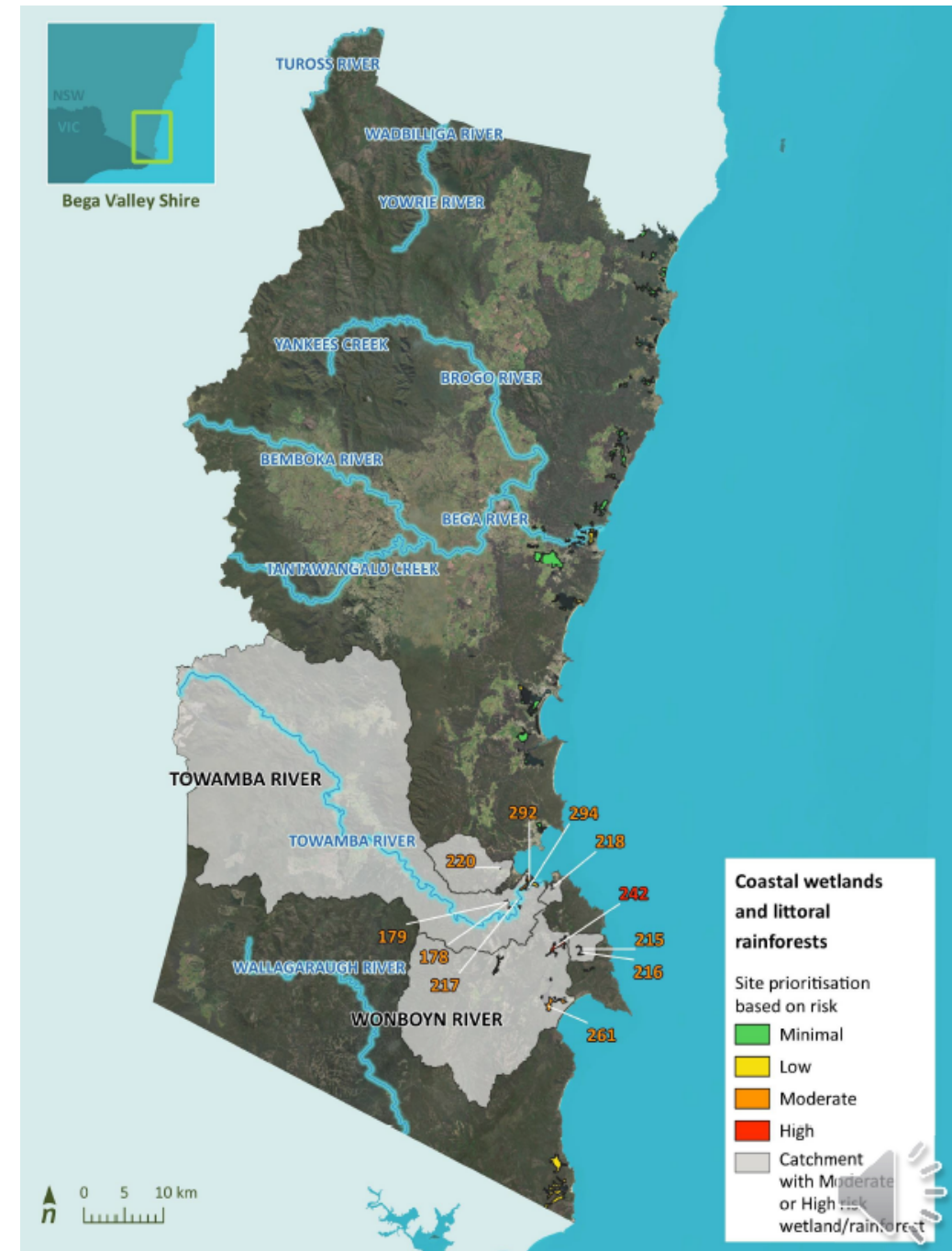




# Priority coastal wetlands and littoral rainforest

Burnt SEPP mapped Wetlands  
 Burnt SEPP mapped Littoral Rainforest  
 Impact Risk Assessment

Catchment	ID (Alluvium)	Area (ha)	Risk/priority	Number of subcatchments hosting wetlands	Notes
Wonboyn River	242	108	High	3	
	261	112	Moderate	3	
Towamba River	178	3	Moderate	1	
	294	8	Moderate	1	
	179	9	Moderate	1	
	217	0.5	Moderate	1	
	292	67	Moderate	1	
Woodburn Creek	215	0.1	Moderate	2	
	216	30	Moderate	10	
Fisheries Creek	218	12	Moderate	15	A very small portion (30 m <sup>2</sup> ; 0.02% of total) extends into the Twofold Bay catchment.
Nullica River	220	1	Moderate	2	



# Next steps

---

- Identify opportunities for immediate on-ground actions – use risk scores or ranking in tables of priority subcatchments and waterways to select areas for field visits
  - Straightforward access
  - Willing landholders and communities
  - Coordinate with partner agencies
- Undertake site visits
  - Identify management options for site
  - Weed management
  - Structural works
  - Stock exclusion fencing
  - Revegetation
  - Proceed to design





Technical support and funding assistance for this project was provided by the  
NSW Government under its

*Bushfire Affected Coastal Waterways Program*

**Department of Planning, Industry and Environment**

