

12 September 2023

Lake Conjola Shared User Path

Dear Resident,

Zauner Construction will be undertaking construction of a new Shared User Path on behalf of Shoalhaven City Council. The Shared User Path will be situated on the northern side of the existing Lake Conjola Entrance Road and Bridge. It will commence from the corner of Milham St, and finish at 97 Lake Conjola Entrance Road.

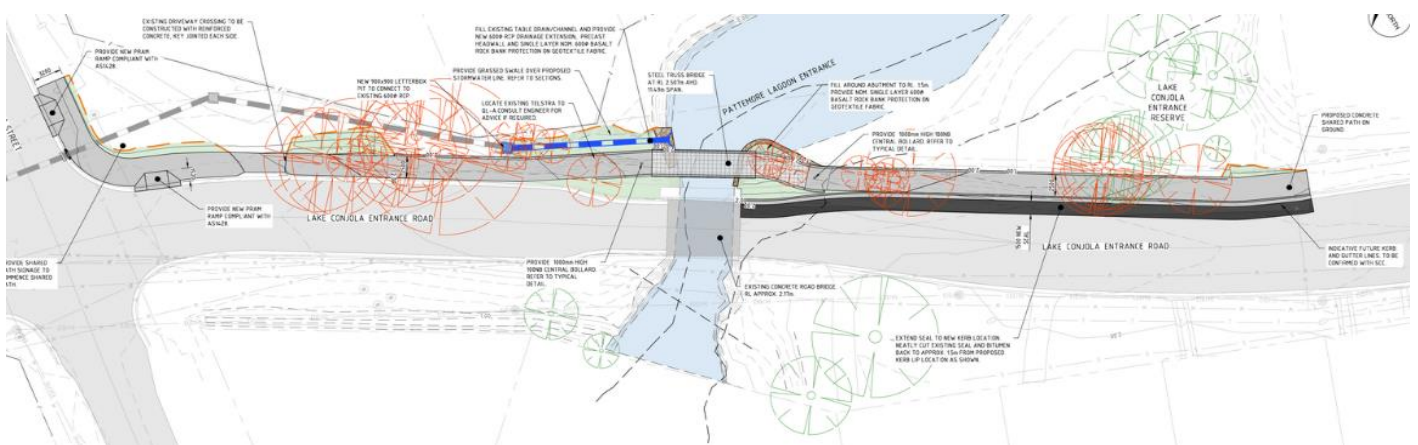
During this time, there will be intermittent disruptions to accessibility. Zauner will endeavour to minimise these instances where possible.

It is anticipated, subject to potential delays, that these works will be completed by **late 2023**.

Should you have any queries, please do not hesitate to contact the Zauner representative onsite, or our office on **(02) 4454 1827**.

Regards,

ZAUNER CONSTRUCTION PTY LTD



Pride in workmanship

Head Office
Level 4, 366 Griffith Rd
PO Box 288
Lavington NSW 2641
P: 02 6025 1988
F: 02 6040 1635
ABN: 21 087 732 607

South Coast Office
Suite 10, 132 Princess Hwy
PO Box 271
Ulladulla NSW 2539
P: 02 4454 1827
F: 02 4454 1690
ACN: 087 732 607

Central West Office
G5, 1521 Forest Rd
Orange NSW 2800
P: 0458 300 776
F: 02 6040 1635
zauner.com.au