

Conjola Memorial Project

fact sheet

The Conjola Memorial Project was initiated to honour the resilience and strength of the Conjola community following the Black Summer bushfires of 2019–20.

This project aims to work with the Conjola community to create a meaningful memorial that reflects the community's experiences and supports ongoing healing and recovery.

The project will engage the community at every stage, through a structured and transparent process, ensuring that the memorial truly represents the desires of those affected by the fires.

Working group selection

- Community members can apply to join the working group by submitting an application during the Expression of Interest (EOI) period from 23 January to 3 March 2025.
- Applicants will be chosen based on their skills, experience, and connection to the community.
- A panel of Council staff and independent external members will review applications to ensure that the working group evenly represents the community's interests.
- The successful applicants will form the working group and members will be responsible for determining their ongoing roles within the group.

Forming the working group

The working group will be the driving force behind the Conjola Memorial Project and will play a crucial role in guiding it through its various stages. Working group members will be responsible for:

Provide recommendations:

Making key recommendations regarding the memorial's objectives, location, and design.

Community engagement:

Leading engagement activities to ensure that the input of all community members is gathered and to ensure that the memorial reflects the needs of the community.

Planning and coordination:

Working and collaborating with Council staff and stakeholders to plan and coordinate the project.

Review and feedback:

Reviewing design proposals and gathering community feedback to ensure alignment with community preferences.

Event organisation:

Helping to organise community events related to the memorial, including the official unveiling.



The memorial *process*

The Conjola Memorial Project follows a structured, nine-stage approach that will be led by the Working Group to ensure thorough community involvement and best practice processes. The stages are:



Stage 1 | Establish working group

- **Formation:** The working group is formed through an EOI process, inviting community members to apply.
- **Selection:** A panel of Council staff and independent external members review applications to ensure a diverse and representative group.
- **Roles:** Members collaboratively determine their roles within the group.



Stage 2 | Community engagement – memorial objectives

- **Purpose:** Engage the community to identify the objectives and purpose of the memorial.
- **Methods:** Interactive sessions, focus groups, surveys, and written submissions gather input on what the memorial should represent.



Stage 3 | Community engagement – memorial location

- **Site suggestions:** The community suggests potential sites for the memorial.
- **Evaluation:** Suggested locations are evaluated based on criteria such as accessibility, visibility, and symbolic significance.
- **Selection:** The final site is chosen through a collaborative effort, guided by community input.



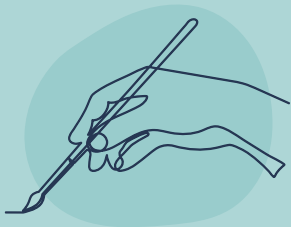
Stage 4 | Design brief

- **Development:** A design brief is created based on community input, outlining the vision and preferences for the memorial.
- **Guidance:** This document provides clear guidance for architects and consultants on thematic concepts, spatial requirements, and aesthetic preferences.



Stage 5 | Concept design and funding solution

- **Concept plans:** Architects, consultants, and artists translate the design brief into conceptual plans.
- **Review:** The working group reviews and refines these plans, then shares them with the community for feedback.
- **Funding:** The working group collaborates with stakeholders to secure funding from various sources, ensuring financial viability.



Stages 6-8 | Detailed design, tender and delivery

- **Standard project stages:** These stages include finalising the detailed design, conducting a formal tender process, and executing the construction and installation of the memorial.
- **Oversight:** Council staff will undertake these standard project stages, with the working group offering oversight to ensure alignment with the community's vision and project objectives.



Stage 9 | Opening event and handover

- **Event:** A community event is organised to officially unveil the memorial.
- **Handover:** The memorial is handed over to the Asset Custodian for ongoing maintenance and care.
- **Feedback:** The community is invited to provide feedback on the process and the outcome.

Get involved

Community participation is essential to the success of the project. There will be many opportunities for you to make your voice heard and contribute to the development of the memorial. Your input will help shape the memorial's objectives, location, and design elements.

Join the working group:

Anyone with a connection to the Conjola area or Black Summer bushfires can apply to be part of the Working Group through the EOI process closing on 3 March 2025. This group will play a key role in guiding the project and ensuring it reflects the community's wishes.

Stay informed and engaged

Subscribe to the Get Involved page to receive regular updates and information about upcoming engagement activities.



Contact us:

For more information or if you have any questions, please contact the Open Space & Recreation Planning team on **1300 293 111** or email **council@shoalhaven.nsw.gov.au**