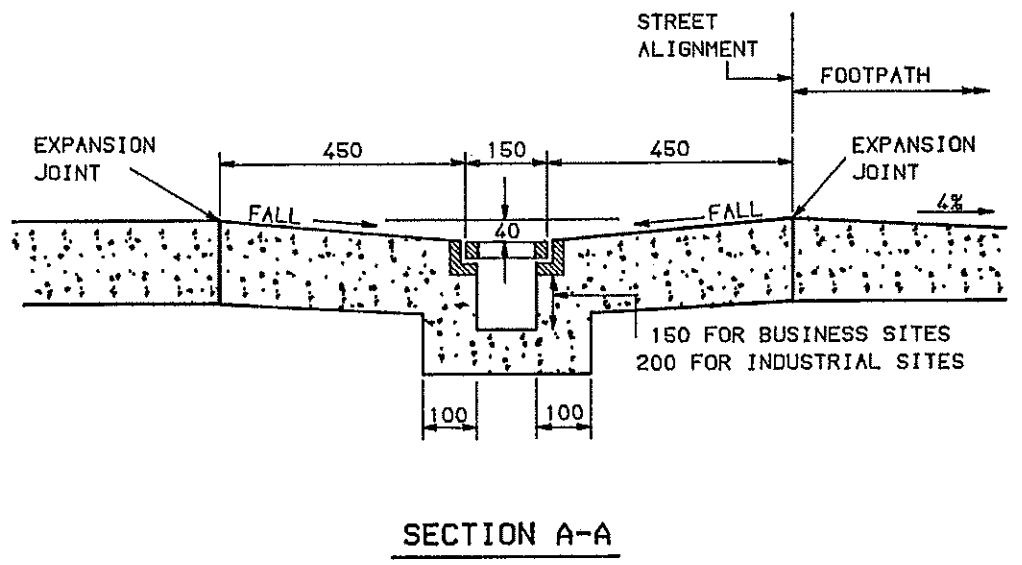


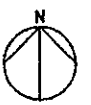
INVERT OF TRENCH TO BE A MINIMUM OF 75 ABOVE INVERT OF GUTTER (AT OUTLET)



**NOTES:**

1. DIMENSIONS ARE IN MILLIMETRES.
2. FOURTY EIGHT (48) HOURS NOTICE IS TO BE GIVEN PRIOR TO THE PLACING OF CONCRETE TO ALLOW FOR INSPECTION BY COUNCIL'S OFFICER

Fig. D5. Misc. 14



SCALE 1: N.T.S.

SUBDIVISION  
CODE

CITY OF SHOALHAVEN  
STANDARD  
TRENCH GRATE

ENGINEERING WORKS  
MANAGER

DRAWN	C. FIESELER
CHECKED	J. BLOM
PLAN REF.	263717
DATE	04. MAY 1994