






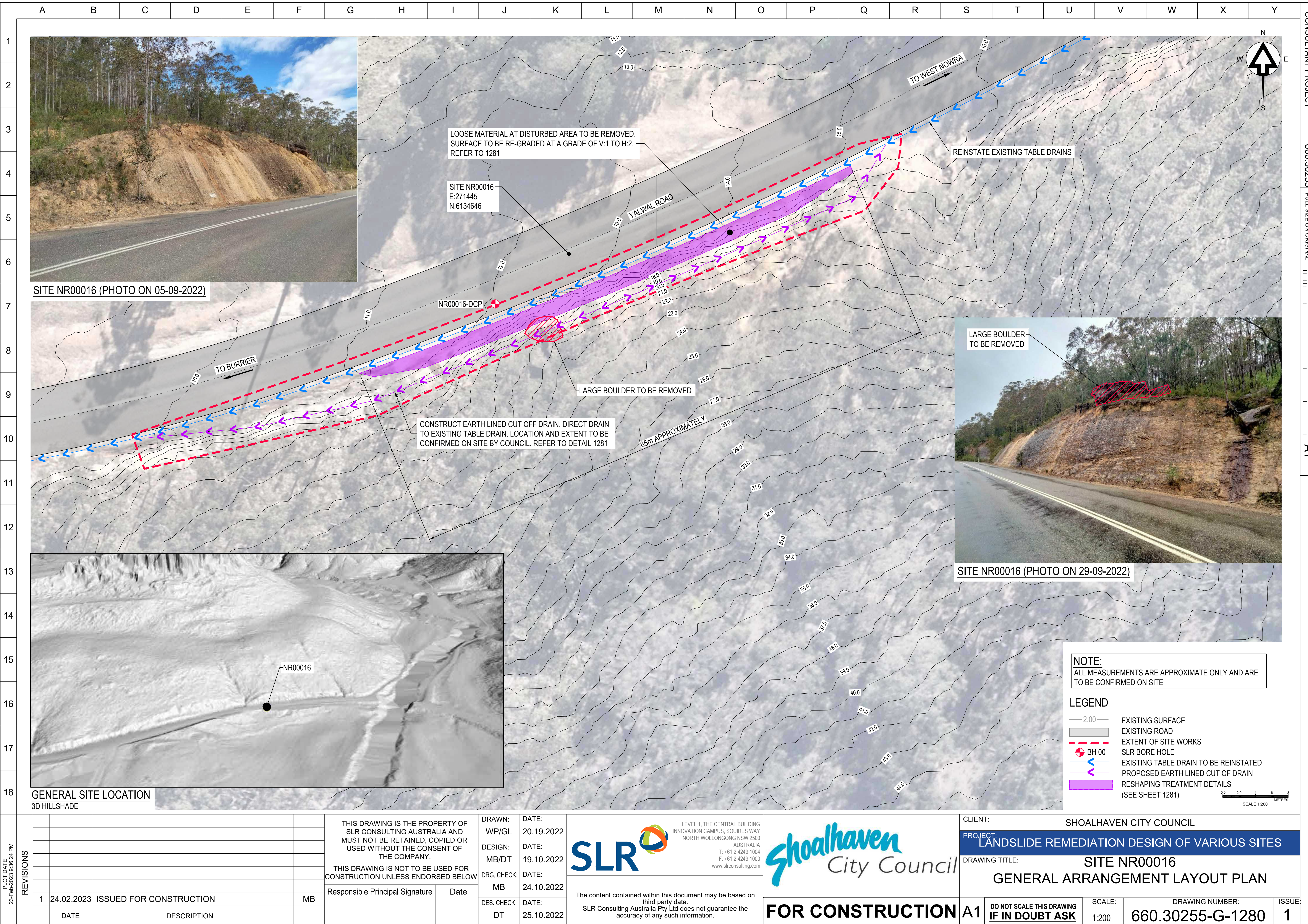
		A	B	C	D	E	F	G	H	I	J	K	L	M	N	O	P	Q	R	S	T	U	V	W	X	Y	CONSULTANT PROJECT 660.30255 FULL SIZE ON ORIGINAL 0 10 20 40 60 80 100 A1																																	
1		DRAWING SCHEDULE (1 OF 2)										DRAWING SCHEDULE (2 OF 2)										COORDINATES TABLE																																						
2		DRAWING NUMBER					DRAWING TITLE					DRAWING NUMBER					DRAWING TITLE					SITE NUMBER						SITE LOCATION					EASTING					NORTHING																						
		660.30255-G-1000					COVER SHEET & SITES LOCALITY PLAN					660.30255-G-1200					SITE DM00583 - GENERAL ARRANGEMENT LAYOUT PLAN					DM00865						Abernathys Rd					266450					6145038																						
		660.30255-G-1001					DRAWING SCHEDULE & COORDINATES TABLE					660.30255-G-1201					SITE DM00583 - CROSS SECTIONS SHEET					SH00290						Bamarang Rd					271979					6135292																						
3		660.30255-G-1002					GENERAL NOTES SHEET 1															DM00706						Browns Mountain Rd					273244					6145779																						
		660.30255-G-1003					GENERAL NOTES SHEET 2															AC00088						Bunkers Hill Rd					274285					6159006																						
		660.30255-G-1004					GENERAL NOTES SHEET 3															DM00548						Bunkers Hill Rd					275018					6160966																						
4							660.30255-G-1010					SITE DM00865 - GENERAL ARRANGEMENT LAYOUT PLAN					660.30255-G-1220					SITE NH00011 - GENERAL ARRANGEMENT LAYOUT PLAN						DM00549					Bunkers Hill Rd					274459					6159432																	
												660.30255-G-1020					SITE SH00290 - GENERAL ARRANGEMENT LAYOUT PLAN											660.30255-G-1230					SITE DM00513 - GENERAL ARRANGEMENT LAYOUT PLAN					DM00869					Bunkers Hill Rd					274354					6159116							
																	660.30255-G-1030					SITE DM00706 - GENERAL ARRANGEMENT LAYOUT PLAN						660.30255-G-1231					SITE DM00513 - CROSS SECTIONS SHEET					DM00870					Bunkers Hill Rd					274402					6159173							
5		660.30255-G-1031					SITE DM00706 - CROSS SECTIONS SHEET										660.30255-G-1232					SITE DM00513 - DETAILS SHEET 1						SH00282					Burrier Rd					267939					6137163																	
																	660.30255-G-1233					SITE DM00513 - DETAILS SHEET 2						SH00288					Burrier Rd					271051					6135673																	
																												SH00292					Burrier Rd					268817					6136420																	
6		660.30255-G-1040					SITE AC00088 - GENERAL ARRANGEMENT LAYOUT PLAN										660.30255-G-1240					SITE DM00863 - GENERAL ARRANGEMENT LAYOUT PLAN						DM00555					Foremans Rd					287060					6155133																	
																	660.30255-G-1050					SITE DM00548 - GENERAL ARRANGEMENT LAYOUT PLAN						DM00882					Foremans Rd					287028					6155134																	
		660.30255-G-1051					SITE DM00548 - DETAILS SHEET										660.30255-G-1250					SITE SH00276 - GENERAL ARRANGEMENT LAYOUT PLAN						DM00610					Hughes Rd					267764					6140045																	
7																												DM00611					Hughes Rd					267775					6140040																	
												660.30255-G-1060					SITE DM00549 - GENERAL ARRANGEMENT LAYOUT PLAN					660.30255-G-1260					SITE DM00808 - GENERAL ARRANGEMENT LAYOUT PLAN					DM00805					Kangaroo Valley Rd					279846					6152399													
																					660.30255-G-1261					SITE DM00808 - CROSS SECTIONS SHEET					DM00806					Kangaroo Valley Rd					279546					6152162														
8																					660.30255-G-1262					SITE DM00808 - TREATMENT ELEVATION SHEET					DM00533					Mount Scanzi Rd					268294					6149554														
	660.30255-G-1070					SITE DM00869 - GENERAL ARRANGEMENT LAYOUT PLAN										660.30255-G-1270					SITE MT00008 - GENERAL ARRANGEMENT LAYOUT PLAN					DM00577					Mount Scanzi Rd					269153					6150610																			
	660.30255-G-1071					SITE DM00869 - CROSS SECTIONS SHEET										660.30255-G-1271					SITE MT00008 - CROSS SECTIONS SHEET					DM00718					Mount Scanzi Rd					269141					6150636																			
9																					660.30255-G-1272					SITE MT00008 - ELEVATION & DETAILS SHEET					DM00755					Mount Scanzi Rd					268187					6149366														
	660.30255-G-1080					SITE DM00870 - GENERAL ARRANGEMENT LAYOUT PLAN										660.30255-G-1280					SITENR00016 - GENERAL ARRANGEMENT LAYOUT PLAN					DM00757					Mount Scanzi Rd					268466					6149581																			
																660.30255-G-1281					SITE NR00016 - CROSS SECTIONS SHEET					DM00864					Mount Scanzi Rd					268507					6149629																			
10	660.30255-G-1090					SITE SH00282 - GENERAL ARRANGEMENT LAYOUT PLAN										660.30255-G-1290					SITE AQ00001 - GENERAL ARRANGEMENT LAYOUT PLAN					NH00013					Mount Scanzi Rd					268449					6149585																			
																										DM00583					Upper Kangarooo River Rd					278778					6156987																			
	660.30255-G-1100					SITE SH00288 - GENERAL ARRANGEMENT LAYOUT PLAN										660.30255-G-1300					SITE DM00523 - GENERAL ARRANGEMENT LAYOUT PLAN					DM00828					Upper Kangarooo River Rd					280258					6161915																			
11																										660.30255-G-1310					SITE DM00822 - GENERAL ARRANGEMENT LAYOUT PLAN					NH00011					Upper Kangarooo River Rd					279513					6157304									
	660.30255-G-1120					SITES DM00882 & DM00555 - GENERAL ARRANGEMENT LAYOUT PLAN										660.30255-G-1320					SITE DM00890 - GENERAL ARRANGEMENT LAYOUT PLAN					DM00513					Wattamolla Rd					288246					6154987																			
	660.30255-G-1121					SITE DM0555 - CROSS SECTIONS SHEET										660.30255-G-1330					SITE DM00899 - GENERAL ARRANGEMENT LAYOUT PLAN					DM00863					Wattamolla Rd					285173					6154673																			
12	660.30255-G-1122					SITE DM00555 - DETAILS SHEET																				SH00276					Wogamia Rd					272677					6137591																			
	660.30255-G-1123					SITE DM00882 - CROSS SECTIONS SHEET																				DM00808					Woodhill Mountain Rd					288281					6154144																			
																										MT00008					Woodhill Mountain Rd					288085					6154219																			
13	660.30255-G-1130					SITES DM00610 & DM00611 - GENERAL ARRANGEMENT LAYOUT PLAN										660.30255-G-1300					SITE DM00899 - GENERAL ARRANGEMENT LAYOUT PLAN					NR00016					Yalwal Rd					271466					6134664																			
																										AQ00001					Upper Kangarooo River Rd					278908					6157117																			
	660.30255-G-1140					SITE DM00805 - GENERAL ARRANGEMENT LAYOUT PLAN																				DM00523					Suffolk Road					277515					6116275																			
14	660.30255-G-1150					SITE DM00806 - GENERAL ARRANGEMENT LAYOUT PLAN										660.30255-G-2000					TYPICAL DETAILS & SPECIFICATIONS SHEET 1					DM00822					Mount Scanzi Rd					269174					6150402																			
	660.30255-G-1151					SITE DM00806 - DETAILS SHEET										660.30255-G-2001					TYPICAL DETAILS & SPECIFICATIONS SHEET 2					DM00890					Burrier Rd					269100					6136495																			
																660.30255-G-2002					TYPICAL DETAILS & SPECIFICATIONS SHEET 3					DM00899					Bamarang Rd					272066					6135240																			
15																660.30255-G-2003					TYPICAL DETAILS & SPECIFICATIONS SHEET 4																																							
	660.30255-G-1160					SITE DM00533 - GENERAL ARRANGEMENT LAYOUT PLAN										660.30255-G-2010					TYPICAL DETAILS & SPECIFICATIONS SHEET 5																																							
																660.30255-G-2011					TYPICAL DETAILS & SPECIFICATIONS SHEET 6																																							
16	660.30255-G-1170					SITES DM00577 & DM00718 - GENERAL ARRANGEMENT LAYOUT PLAN										660.30255-G-2012					TYPICAL DETAILS & SPECIFICATIONS SHEET 7																																							
																660.30255-G-2013					TYPICAL DETAILS & SPECIFICATIONS SHEET 8																																							
	660.30255-G-1180					SITE DM00755 - GENERAL ARRANGEMENT LAYOUT PLAN										660.30255-G-2014					TYPICAL DETAILS & SPECIFICATIONS SHEET 9																																							
17																																																												
	660.30255-G-1190					SITES DM00757, NH00013 & DM00864 - GENERAL ARRANGEMENT LAYOUT PLAN																																																						
18																																																												

PLOT DATE 22-Feb-2023 4:11:29 PM	REVISIONS					THIS DRAWING IS THE PROPERTY OF SLR CONSULTING AUSTRALIA AND MUST NOT BE RETAINED, COPIED OR USED WITHOUT THE CONSENT OF THE COMPANY.	DRAWN: WP/GL	DATE: 19.10.2022	 <div>LEVEL 1, THE CENTRAL BUILDING INNOVATION CAMPUS, SQUIRES WAY NORTH WOLLONGONG NSW 2500 AUSTRALIA T: +61 2 4249 1004 F: +61 2 4249 1000 www.slrconsulting.com</div>	FOR CONSTRUCTION	CLIENT: SHOALHAVEN CITY COUNCIL			
												PROJECT: LANDSLIDE REMEDIATION DESIGN OF VARIOUS SITES		
	1	24.02.2023	ISSUED FOR CONSTRUCTION	DT	THIS DRAWING IS NOT TO BE USED FOR CONSTRUCTION UNLESS ENDORSED BELOW	DRG. CHECK: MB	DATE: 24.10.2022	The content contained within this document may be based on third party data. SLR Consulting Australia Pty Ltd does not guarantee the accuracy of any such information.	DRAWING TITLE: DRAWING SCHEDULE & COORDINATES TABLE	A1	DO NOT SCALE THIS DRAWING IF IN DOUBT ASK	SCALE: N/A	DRAWING NUMBER: 660.30255-G-1001	ISSUE 1
	DATE	DESCRIPTION		Responsible Principal Signature										

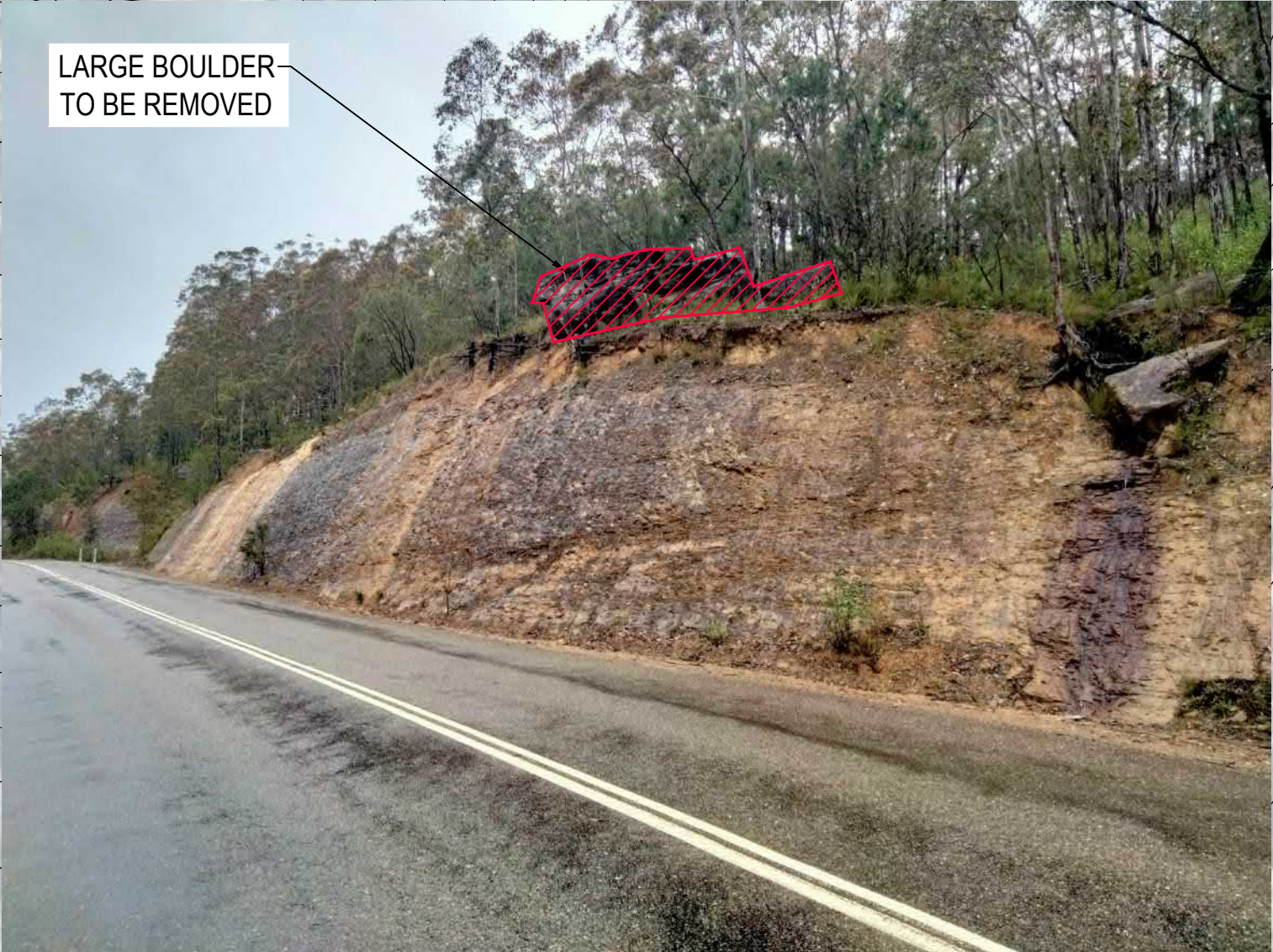
		A	B	C	D	E	F	G	H	I	J	K	L	M	N	O	P	Q	R	S	T	U	V	W	X	Y	CONSULTANT PROJECT																																																																																																																																																																																																																																																																																																																																																																																																																										
		DEFINITIONS																																																																																																																																																																																																																																																																																																																																																																																																																																																			
1	2	1. PRINCIPAL - THE PRINCIPAL IS IDENTIFIED AS SHOALHAVEN CITY COUNCIL.																								24. OBTAIN NECESSARY PERMITS AND APPROVALS TO WORK ON SITE. NOTIFY RELEVANT SERVICE AUTHORITIES BEFORE COMMENCING WORK ON SITE.																								53. GENERAL WASTE (RUBBISH) IS NOT TO BE ALLOWED TO LIE OR ACCUMULATE ON THE SITE. KEEP ALL DOCKETS/RECEIPTS FOR WATE MANAGEMENT/DISPOSAL AND FORWARD COPIES TO THE PRINCIPAL'S REPRESENTATIVE.																																																																																																																																																																																																																																																																																																																																																																																																			
2. GEOTECHNICAL DESIGN REPRESENTATIVE - SUITABLY QUALIFIED GEOTECHNICAL ENGINEER APPOINTED BY THE PRINCIPAL TO PROVIDE ON-SITE VERIFICATION OF THE CONSTRUCTION.																								25. SERVICES ARE TO BE LOCATED ON SITE PRIOR TO CONSTRUCTION COMMENCING.																								54. ONLY VIRGIN EXCAVATED NATURAL MATERIAL (VENM) CAN BE IMPORTED ON SITE UNLESS APPROPRIATE TESTING AND DOCUMENTATION IS PROVIDED.																																																																																																																																																																																																																																																																																																																																																																																																					
3. CONTRACTOR - THE ENTITY UNDERTAKING THE CONSTRUCTION.																								26. DURING CONSTRUCTION STRUCTURES SHALL BE MAINTAINED IN A STABLE CONDITION AND NO PART SHALL BE OVERLOADED. TEMPORARY SUPPORTS SHALL BE PROVIDED BY THE BUILDER IN ORDER TO KEEP THE WORKS AND ANY EXCAVATIONS STABLE AT ALL TIMES.																								55. KEEP ALL DOCUMENTS/RECORDS OF THE TRANSPORT AND USE OF ATERIAL IMPORTED ONTO SITE AND FORWARD COPIES TO THE PRINCIPAL'S REPRESENTATIVE.																																																																																																																																																																																																																																																																																																																																																																																																					
4. UNO - UNLESS NOTED OTHERWISE.																								27. PROVIDE SAFETY BARRIERS AT EDGES OF OPENINGS AND ELEVATED AREAS. ENSURE WORKERS ARE APPROPRIATELY RESTRAINED/ TETHERED/ HARNESSSED DURING WORKS WHERE THE LIKELIHOOD AND CONSEQUENCE OF A FALL IS REASONABLY SIGNIFICANT.																								TRAFFIC CONTROL																																																																																																																																																																																																																																																																																																																																																																																																					
GENERAL NOTES																								28. REVIEW ADEQUACY OF WORKING SPACE AVAILABLE FOR CONSTRUCTION ACTIVITIES. ENSURE SEPARATION OF PLANT AND PERSONNEL ON SITE, INCLUDING MOVEMENTS OF BOTH.																								56. ESTABLISH TRAFFIC CONTROL (IF REQUIRED) AT PROJECT BOUNDARIES IN ACCORDANCE WITH AN APPROPRIATE TRAFFIC CONTROL PLAN APPROVED BY THE PRINCIPAL.																																																																																																																																																																																																																																																																																																																																																																																																					
3	4	5. THE GEOLOGICAL PROFILE AND GEOTECHNICAL CONDITIONS SHOWN ON THE DRAWINGS ARE INDICATIVE AND HAVE BEEN INFERRED FROM LIMITED INVESTIGATIONS. SHOULD THE ENCOUNTERED GEOLOGICAL PROFILE DIFFER FROM THAT SHOWN, THE DESIGN SHALL BE REVIEWED TO ENSURE SUITABILITY OF THE DESIGN TO ENCOUNTERED CONDITIONS.																								29. LOCATE LIFTING SLEW AND LAY DOWN AREAS AWAY FROM REGULAR CONSTRUCTION TRAFFIC.																								57. CONSTRUCTION WARNING SIGNS AND TRAFFIC SPEED SIGNS TO BE ESTABLISHED IN GENERAL ACCORDANCE WITH TRAFFIC CONTROL PLAN APPROVED BY THE PRINCIPAL.																																																																																																																																																																																																																																																																																																																																																																																																			
6. PRIOR TO CONSTRUCTION SITE SET-UP, THE CONTRACTOR SHALL SUBMIT THE FOLLOWING TO THE PRINCIPAL FOR REVIEW.																								30. WRITTEN RISK ASSESSMENTS ARE ADVISED FOR ACCESS TO OPEN EXCAVATIONS.																								58. A WASTE CLASSIFICATION HAS NOT BEEN CARRIED OUT FOR THIS SITE. HOWEVER, IF POTENTIAL CONTAMINANTS ARE DISCOVERED DURING WORKS A WASTE CLASSIFICATION MUST BE CARRIED OUT BY THE CONTRACTOR, IN ACCORDANCE WITH REGULATORY REQUIREMENTS.																																																																																																																																																																																																																																																																																																																																																																																																					
A. ALL SAFE WORK METHOD STATEMENTS AND PLANS																								31. PROVIDE ACCESS AND EGRESS TO EXCAVATIONS APPROPRIATE IN CASE OF INUNDATION, COLLAPSE OR ENGULFMENT.																								EARTHWORKS																																																																																																																																																																																																																																																																																																																																																																																																					
B. CONSTRUCTION STAGING PLANS																								32. SEEK ADVICE FROM SUITABLY QUALIFIED GEOTECHNICAL OR STRUCTURAL ENGINEER PRIOR TO OPERATION OF HEAVY SURFACE PLANT AND EQUIPMENT OR STOCKPILING MATERIAL NEAR OPEN EXCAVATIONS OR EXISTING RETAINING STRUCTURES.																								59. STRIP OFF ALL VEGETATION, RUBBISH AND TOPSOIL CONTAINING ORGANIC OR ROOT MATTER FROM THE AREA OF THE WORKS AND REMOVE FROM SITE/ STOCKPILE FOR RE-USE.																																																																																																																																																																																																																																																																																																																																																																																																					
C. CONSTRUCTION PROGRAM																								33. SEEK ADVICE FROM SUITABLY QUALIFIED GEOTECHNICAL FOR ALL TEMPORARY BATTERS.																								60. WHERE REQUIRED, EXCAVATE SITE TO THE EXTENT DETAILED IN THE DETAILED SECTION DRAWING.																																																																																																																																																																																																																																																																																																																																																																																																					
D. CONSTRUCTION ENVIRONMENTAL MANAGEMENT PLAN (CEMP)																								34. SEEK ADVICE FROM SUITABLY QUALIFIED STRUCTURAL ENGINEER BEFORE CORING, CHASING, CUTTING OR REMOVAL OF EXISTING CONCRETE AND REINFORCEMENT.																								61. FOR EACH SITE, THE FOUNDATION LEVEL WILL VARY DEPENDING ON GROUND CONDITIONS ENCOUNTERED ON THE SITE AND SHALL BE CONFIRMED ON SITE BY A SUITABLY QUALIFIED GEOTECHNICAL ENGINEER.																																																																																																																																																																																																																																																																																																																																																																																																					
E. PROJECT QUALITY PLAN																								35. MAKE WORK AREAS SAFE WHERE STRUCTURAL ELEMENTS ARE DAMAGED, CRACKED OR HAVE SUFFERED SIGNIFICANT SECTION LOSS BEFORE ALLOWING GENERAL CONSTRUCTION OR REPAIR ACCESS.																								62. PRIOR TO ANY FILLING, THE EXPOSED SUBGRADE SHALL BE PROOF ROLLED WITH A 12 TONNE STATIC MASS SMOOTH DRUM ROLLER IN THE PRESENCE OF THE PRINCIPAL'S REPRESENTATIVE OR GEOTECHNICAL ENGINEER AND ANY SOFT OR YIELDING MATERIALS REMOVED AND REPLACED WITH APPROVED FILLING COMPACTED AS HEREAFTER SPECIFIED.																																																																																																																																																																																																																																																																																																																																																																																																					
6	7	APPROVAL OF THE DOCUMENTATION BY THE PRINCIPAL SHALL CONSTITUTE A HOLD POINT.																								36. REPORT SIGNIFICANT SECTION LOSS OR CORROSION FLAKING BEFORE STARTING PAINTING OR REPAIRS. CONSULT SUITABLY QUALIFIED STRUCTURAL ENGINEER IF SECTION LOSS OR EXTENSIVE CORROSION FLAKING PRESENT BEFORE PROCEEDING WITH WORK.																								63. IMPORTING FILL MATERIAL TO SITE. SEE NOTE NO. 54.																																																																																																																																																																																																																																																																																																																																																																																																			
7. SITE TO BE RETURNED TO ORIGINAL CONDITION OR BETTER AT THE COMPLETION OF THE WORKS																								37. UNTIL PERMANENT SUPPORT IS PROVIDED, PROVIDE TEMPORARY SUPPORT FOR SECTIONS OF EXISTING STRUCTURES WHICH ARE TO BE ALTERED AND WHICH NORMALLY RELY FOR SUPPORT ON WORK TO BE DEMOLISHED.																								64. FILL SHALL BE SOUND WELL GRADED MATERIAL WITH A HIGH GRANULAR CONTENT AND SHALL BE THE BEST OF EXCAVATED MATERIALS FROM THE SITE, OR APPROVED SOUND IMPORTED MATERIAL FREE OF RUBBISH, PLASTIC CLAY OR LARGE PIECES THAT WOULD PRECLUDE COMPACTION.																																																																																																																																																																																																																																																																																																																																																																																																					
8. NOMINATION OF PROPRIETARY ITEMS DOES NOT INDICATE EXCLUSIVE PREFERENCE BUT INDICATES THE REQUIRED PROPERTIES OF THE ITEM. SIMILAR ALTERNATIVES HAVING THE REQUIRED PROPERTIES MAY BE OFFERED FOR APPROVAL BY THE DESIGN REPRESENTATIVE.																								38. PROVIDE SUPPORT TO ADJACENT STRUCTURES WHERE NECESSARY, SUFFICIENT TO PREVENT DAMAGE RESULTING FROM THE WORKS.																								65. FILL SHALL BE SPREAD IN LAYERS NOT EXCEEDING 150mm AND COMPACTED AT OPTIMUM MOISTURE CONTENT ±2% TO NOT LESS THAN THE REQUIRED MAXIMUM DRY DENSITY.																																																																																																																																																																																																																																																																																																																																																																																																					
9. DIMENSIONS ARE IN MILLIMETRES, LEVELS ARE IN METRES UNO, CHAINAGES ARE IN METRES UNO. REDUCED LEVELS RELATE TO AUSTRALIAN HEIGHT DATUM.																								39. LATERAL SUPPORTS: PROVIDE LATERAL SUPPORT AT LEAST EQUAL TO THAT GIVEN BY THE STRUCTURE TO BE DEMOLISHED, USING SHORING.																								66. DENSITY TESTING OF FILLING (AND BASE COURSE WHERE APPLICABLE) SHALL BE CARRIED OUT AT THE RATE OF 1 TEST PER 200 SQUARE METRES EACH LAYER (MINIMUM 2 TESTS).																																																																																																																																																																																																																																																																																																																																																																																																					
10. ALL DIMENSIONS AND SETTING OUT SHALL BE VERIFIED ON SITE BY THE CONTRACTOR BEFORE COMMENCING WORK. HAVE SURVEY AND SETTING OUT UNDERTAKEN BY A REGISTERED SURVEYOR. ALL DIMENSIONS DO NOT OBTAIN DIMENSIONS BY SCALING OF THE DRAWINGS.																								40. VERTICAL SUPPORTS: PROVIDE SUPPORT WHERE NECESSARY USING PILING OR UNDERPINNING, OR BOTH.																								67. WHERE REQUIRED, THE FOUNDATION LAYER SHALL BE, DRY, SMOOTH, LEVEL AND GRADED TO THE PROFILE AS SHOWN IN THE DETAILED DRAWING. IT SHALL BE FREE OF SURFACE IRREGULARITIES, LOOSE OR UNSUITABLE MATERIAL.																																																																																																																																																																																																																																																																																																																																																																																																					
11. VERIFY ON SITE SETTING OUT DIMENSIONS AND EXISTING MEMBER SIZES SHOWN ON DRAWINGS BEFORE SHOP DRAWINGS, CONSTRUCTION AND FABRICATION IS COMMENCED.																								ENVIRONMENTAL SITE MANAGEMENT																								68. WHERE REQUIRED, A BLINDNG LAYER TO INFILL VOIDS, UNEVEN GROUND AND CAVITIES AT FOUNDATION LEVEL TO BE CREATED WITH SITE WON GRANULAR SOILS AND ROCKFILL TO CREATE A SMOOTH, EVEN, STABLE WORKING PLATFORM. GRANULAR BLINDING MATERIAL SHALL COMPRISE OF GRANULAR, SITE WON SOIL FREE OF UNSUITABLE MATERIAL AND SHALL BE COMPACTED USING MANUAL TECHNIQUES (E.G., HAND TAMPING, WALK-BEHIND COMPACTOR) TO MINIMUM RELATIVE DENSITY OF 70%.																																																																																																																																																																																																																																																																																																																																																																																																					
12. REFER DISCREPANCIES TO THE PRINCIPAL BEFORE PROCEEDING WITH WORK.																								41. IT IS THE RESPONSIBILITY OF THE CONTRACTOR TO ENSURE THAT ALL MEASURES ARE TAKEN DURING THE COURSE OF CONSTRUCTION TO PREVENT SEDIMENT EROSION AND POLLUTION OF THE DOWNSTREAM SYSTEM.																								69. THE CONTRACTOR SHALL PROGRAM AND UNDERTAKE THE EARTHWORKS OPERATIONS SUCH THAT WORKING AREAS ARE ADEQUATELY DRAINED DURING CONSTRUCTION. THE SURFACE SHALL BE GRADED AND SEALED OFF TO REMOVE DEPRESSIONS WHICH WOULD ALLOW WATER TO POND AND PENETRATE THE UNDERLYING MATERIAL. ANY DAMAGE RESULTING FROM FAILURE TO COMPLY WITH THESE REQUIREMENTS SHALL BE RECTIFIED AT THE CONTRACTOR'S EXPENSE.																																																																																																																																																																																																																																																																																																																																																																																																					
13. WORKMANSHIP AND MATERIALS TO COMPLY WITH REQUIREMENTS OF AUSTRALIAN STANDARDS, NATIONAL CONSTRUCTION CODE (NCC) AND BY-LAWS AND ORDINANCES OF RELEVANT BUILDING AUTHORITIES. ALL STANDARDS REFERRED TO ARE THOSE CURRENT (AS AMENDED) AT COMMENCEMENT OF CONTRACT.																								42. TEMPORARY EROSION AND SEDIMENT CONTROL (ESC) MEASURES SHALL BE PROVIDED IN ACCORDANCE WITH INTERNATIONAL EROSION CONTROL ASSOCIATION (IECA) BEST PRACTICE EROSION AND SEDIMENT CONTROL GUIDELINES (2008) AND BE MAINTAINED IN OPERATIVE CONDITION AT ALL TIMES AND SHALL REMAIN IN PLACE FOR THE DURATION OF THE WORK.																								70. HAVE TESTING PERFORMED BY AN INDEPENDENT NATA (NATIONAL ASSOCIATION OF TESTING AUTHORITIES) ACCREDITED AUTHORITY AND PROVIDE TEST REPORTS TO THE PRINCIPAL. THE CONTRACTOR SHALL BEAR ALL COSTS ASSOCIATED WITH COMPLIANCE TESTING.																																																																																																																																																																																																																																																																																																																																																																																																					
14. WHERE NEW WORK ABUTS EXISTING, PROVIDE SMOOTH TRANSITION FREE OF ABRUPT CHANGES.																								43. SEDIMENT AND EROSION CONTROLS MUST BE IN PLACE PRIOR TO THE COMMENCEMENT OF ANY EARTHWORKS OR DEMOLITION ACTIVITY. THE LOCATION OF SUCH DEVICES IS GENERALLY AT THE END OF THE DIRECTION OF FLOW BEFORE REACHING THE DOWNSTEAM SYSTEM. FINAL POSITION SHALL BE DETERMINED ON SITE.																																																																																																																																																																																																																																																																																																																																																																																																																													
15. PROTECT EXISTING STRUCTURES FROM DAMAGE OR CRACKING. MAKE GOOD ANY DAMAGE TO EXISTING ELEMENTS AT COMPLETION OF WORKS.																								44. INSTALL TEMPORARY SEDIMENT BARRIERS TO ALL INLET PITS LIKELY TO COLLECT SILT LADEN WATER UNTIL SURROUNDING AREAS ARE PAVED OR REVEGETATED.																																																																																																																																																																																																																																																																																																																																																																																																																													
16. IMPLEMENT SOIL AND WATER MANAGEMENT PROCEDURES TO AVOID EROSION, CONTAMINATION AND SEDIMENTATION OF SITE, SURROUNDING AREAS AND DRAINAGE SYSTEMS.																								45. ALL SILT FENCES AND BARRIERS ARE TO BE MAINTAINED IN GOOD ORDER AND REGULARLY DESILTED DURING THE CONSTRUCTION PERIOD.																																																																																																																																																																																																																																																																																																																																																																																																																													
17. DISPOSE OF SURPLUS MATERIAL OFF SITE IN ACCORDANCE WITH LOCAL AUTHORITY WASTE REGULATIONS.																								46. STOCKPILES OF LOOSE MATERIALS SUCH AS SAND, SOIL AND GRAVEL MUST BE COVERED WITH GEOTEXTILE. PLASTIC SHEETING OR MEMBRANE MUST NOT BE USED. SAFETY BARRICADING SHALL BE USED TO ISOLATE STOCKPILES OF SOLID MATERIALS SUCH AS STEEL REINFORCING. SEDIMENT FENCE IS TO BE PLACED DOWNSLOPE OF ALL STOCKPILES.																																																																																																																																																																																																																																																																																																																																																																																																																													
18. TEMPORARY WORKS AND CONSTRUCTION METHODS ARE THE RESPONSIBILITY OF THE CONTRACTOR.																								47. ANY WASTE GENERATED, INCLUDING EXCAVATED MATERIALS, SHALL BE REMOVED FROM THE SITE AND DISPOSED OF APPROPRIATELY, ACCORDING TO THE WASTE CLASSIFICATION. GENERAL WASTE (RUBBISH) IS NOT TO BE ALLOWED TO LIE OR ACCUMULATE ON THE SITE. KEEP ALL DOCKETS/RECEIPTS FOR WASTE MANAGEMENT/DISPOSAL AND FORWARD COPIES TO THE PRINCIPAL'S REPRESENTATIVE.																																																																																																																																																																																																																																																																																																																																																																																																																													
19. GIVE TWO WORKING DAYS (48 HOURS) NOTICE SO THAT INSPECTION OF CRITICAL STAGES OF WORK (INCLUDING HOLD POINTS AND WITNESS POINTS) MAY BE MADE.																								48. ALL VEHICLES LEAVING THE SITE MUST HAVE CLAY AND SOIL SHAKEN OFF AS PRACTICALLY AS POSSIBLE.																																																																																																																																																																																																																																																																																																																																																																																																																													
20. INSPECTIONS AND REVIEWS UNDERTAKEN BY THE PRINCIPAL OR OTHERS DO NOT RELIEVE THE CONTRACTOR OF RESPONSIBILITY FOR COMPLIANCE WITH THE DRAWINGS OR SPECIFICATIONS.																								49. TRUCKS REMOVING EXCAVATED/DEMOLISHED MATERIAL SHALL TRAVEL ON STABILISED CONSTRUCTION PATHS. MATERIAL ARE TO BE TAKEN TO THE TRUCKS TO REDUCE TRUCK MOVEMENTS ON SITE. TRUCKS TO BE LIMITED TO SINGLE UNIT HEAVY RIGID VEHICLES (NO SEMI TRAILERS).																																																																																																																																																																																																																																																																																																																																																																																																																													
21. AT THE COMPLETION OF THE WORKS, THE CONTRACTOR SHALL PREPARE AND SUBMIT A 'HANDOVER' PACKAGE TO THE PRINCIPAL FOR APPROVAL. THE PACKAGE SHALL INCLUDE AT A MINIMUM:																								50. DURING TRENCH EXCAVATION ALL SPOIL SHALL BE MOUNDED ON THE UPHILL SIDE OF TRENCHES AND PLACEMENT IS TO COMPLY WITH THE PRINCIPAL'S REQUIREMENT.																																																																																																																																																																																																																																																																																																																																																																																																																													
A. DRILLING RECORDS																								WASTE AND CONTAMINATION																																																																																																																																																																																																																																																																																																																																																																																																																													
B. RFCS, NCR'S, CERTIFICATES AND OTHER FORMS AS NOMINATED BY THE PRINCIPAL.																								51. A WASTE CLASSIFICATION HAS NOT BEEN CARRIED OUT FOR THIS SITE. HOWEVER, IF POTENTIAL CONTAMINANTS ARE DISCOVERED DURING WORKS A WASTE CLASSIFICATION MUST BE CARRIED OUT BY THE CONTRACTOR, IN ACCORDANCE WITH REGULATORY REQUIREMENTS.																																																																																																																																																																																																																																																																																																																																																																																																																													
C. APPROVAL OF THE HANDOVER PACKAGE BY THE PRINCIPAL SHALL CONSTITUTE A HOLD POINT.																								52. IF REQUIRED, ANY WASTE GENERATED, INCLUDING EXCAVATED MATERIALS, SHALL BE REMOVED FROM SITE AND DISPOSED OF APPROPRIATELY, ACCORDING TO THE WASTE CLASSIFICATION.																																																																																																																																																																																																																																																																																																																																																																																																																													
SAFETY IN DESIGN																																																																																																																																																																																																																																																																																																																																																																																																																																																					
22. THE SAFETY RISK MITIGATION ITEMS BELOW ARE BASED ON SLR'S DESIGN EXPERIENCE AND DO NOT NECESSARILY ACCOUNT FOR ALL CONSTRUCTION, OPERATION, MAINTENANCE AND DEMOLITION SAFETY RISKS. BASED ON INFORMATION AVAILABLE WHEN THIS DRAWING WAS MADE, IN ITS CAPACITY AS DESIGNER ONLY, SLR HAS TRIED TO IDENTIFY SAFETY RISKS PERTAINING TO CONSTRUCTION, OPERATION, MAINTENANCE AND DEMOLITION PHASES OF THE ASSET. INCLUSION (OR NOT) OF ANY ITEM DOES NOT REDUCE OR LIMIT OBLIGATIONS OF CONSTRUCTOR, USER, MAINTAINER AND DEMOLISHER TO UNDERTAKE APPROPRIATE RISK MANAGEMENT ACTIVITIES TO REDUCE RISK AND IS NOT AN ADMISSION BY SLR THAT INCLUSION OF ANY ITEM IS DESIGNER'S RESPONSIBILITY.																																																																																																																																																																																																																																																																																																																																																																																																																																																					
23. CARRY OUT WORK IN A SAFE MANNER IN ACCORDANCE WITH APPLICABLE LEGISLATION, STATUTORY REGULATIONS, BY-LAWS OR RULES. CONTRACTOR IS RESPONSIBLE FOR OCCUPATIONAL HEALTH AND SAFETY OF SITE PERSONNEL AND GENERAL PUBLIC IN ACCORDANCE WITH ALL CURRENT WORK HEALTH AND SAFETY ACTS, LEGISLATIVE REQUIREMENTS, ASSOCIATED REGULATIONS AND CODES OF PRACTICE, INDUSTRIAL AGREEMENTS AND ACCEPTED INDUSTRY PRACTICE.																																																																																																																																																																																																																																																																																																																																																																																																																																																					
PLOT DATE 22-Feb-2023 4:11:38 PM		REVISIONS						THIS DRAWING IS THE PROPERTY OF SLR CONSULTING AUSTRALIA AND MUST NOT BE RETAINED, COPIED OR USED WITHOUT THE CONSENT OF THE COMPANY.		DRAWN: WP/GL	DATE: 20.10.2022	 <div>LEVEL 1, THE CENTRAL BUILDING INNOVATION CAMPUS, SOIRES WAY NORTH WOLLONGONG NSW 2500 AUSTRALIA T: +61 2 4249 1004 F: +61 2 4249 1000 www.slrconsulting.com</div>		CLIENT: SHOALHAVEN CITY COUNCIL																																																																																																																																																																																																																																																																																																																																																																																																																																							
									THIS DRAWING IS NOT TO BE USED FOR CONSTRUCTION UNLESS ENDORSED BELOW		DESIGN: MB/DT			DATE: 19.10.2022	PROJECT: LANDSLIDE REMEDIATION DESIGN OF VARIOUS SITES																																																																																																																																																																																																																																																																																																																																																																																																																																						
											DRG. CHECK: MB			DATE: 24.10.2022	DRAWING TITLE: GENERAL NOTES SHEET 1																																																																																																																																																																																																																																																																																																																																																																																																																																						
			1	24.02.2023	ISSUED FOR CONSTRUCTION			DT	Responsible Principal Signature	Date	DES. CHECK: DT			DATE: 25.10.2022	The content contained within this document may be based on third party data. SLR Consulting Australia Pty Ltd does not guarantee the accuracy of any such information.										FOR CONSTRUCTION																																																																																																																																																																																																																																																																																																																																																																																																																												
				DATE	DESCRIPTION																				A1																																																																																																																																																																																																																																																																																																																																																																																																																												

		A	B	C	D	E	F	G	H	I	J	K	L	M	N	O	P	Q	R	S	T	U	V	W	X	Y	CONSULTANT PROJECT																		
																										660.30255		FULL SIZE ON ORIGINAL 0 10 20 40 60 80 100 A1																	
1	2	EXCAVATION																								99. BOTTOM COVER FOR FOOTINGS SHALL BE 75mm UNLESS NOTED OTHERWISE.										STRUCTURAL STEEL									
		71. SUB VERTICAL EXCAVATION MUST NOT EXCEED 1.5m DEPTH PRIOR TO INSPECTION BY A SUITABLY QUALIFIED GEOTECHNICAL ENGINEER.																								100. DETAILS OF THE PROPOSED MIX TO BE SUBMITTED & APPROVAL OBTAINED PRIOR TO POURING ANY CONCRETE.										124. ALL WORKMANSHIP AND MATERIALS SHALL BE IN ACCORDANCE WITH AS4100 AND AS1554 EXCEPT WHERE VARIED BY THE CONTRACT DOCUMENTS.									
3	4	72. WHERE UNFAVOURABLE EXCAVATION CONDITIONS EXIST SUCH AS SHALLOW LARGE FLOATING BOULDERS, SEEK ENGINEERING ADVICE FROM A SUITABLY QUALIFIED GEOTECHNICAL ENGINEER.																								101. IN LIEU OF TRIAL MIX OF CONCRETE TO BE USED, RECENT TRIALS AND PRODUCTION RUNS FOR SIMILAR MIX DESIGNS MAY BE SUBMITTED FOR CONSIDERATION AS EVIDENCE OF COMPLIANCE WITH THE REQUIREMENTS OF THIS SPECIFICATION WITH REGARD TO MIX DESIGN.										125. ALL MATERIAL TO BE GRADE 250 HOT ROLLED PLATES COMPLYING WITH AS 3678 U.N.O.									
		73. WHERE SHALLOW BEDROCK IS ENCOUNTERED PRIOR TO DESIGN FOUNDATION DEPTH, SEEK ENGINEERING ADVICE FROM A SUITABLY QUALIFIED GEOTECHNICAL ENGINEER.																								102. THE CONTRACTOR SHALL ALLOW AT LEAST 1 TEST SECTION EVERY 25 CUBIC METRE OF CONCRETE MIX BROUGHT TO SITE TO DEMONSTRATE COMPLIANCE WITH THIS DOCUMENT. THE FOLLOWING TEST CYLINDERS AND TEST DATA SHALL BE OBTAINED FROM EACH TEST SECTION: A. 7 DAY COMPRESSIVE STRENGTH - 3 CYLINDERS B. 14 DAY COMPRESSIVE STRENGTH - 3 CYLINDERS C. 28 DAY COMPRESSIVE STRENGTH - 3 CYLINDERS										126. WELDING SHALL BE CARRIED OUT IN ACCORDANCE WITH AS 1554.1 AND SHALL BE GP CATEGORY U.N.O.									
5	6	74. TEMPORARY CUT FACES TO BE BATTERED BACK TO A SUITABLE SLOPE TO MAINTAIN STABILITY AT ALL TIMES.																								103. THE AVERAGE STRENGTH OF THE THREE CYLINDERS TESTED AT 28 DAYS SHALL EXCEED THE SPECIFIED CHARACTERISTIC STRENGTH BY AT LEAST 1.65 TIMES THE STANDARD DEVIATION OF THE RESULTS FOR THAT TRIAL MIX.										127. WELDING CONSUMABLES SHALL BE E49XX OR W50X.									
		75. DELINEATE A MINIMUM EXCLUSION ZONE FROM THE EDGE OF THE EXCAVATION EQUAL TO THE HEIGHT OF EXCAVATION AT ALL TIMES. NO SURCHARGE LOADS ARE TO THE PLACED WITHIN THIS ZONE SUCH AS VEHICLES AND /OR CONSTRUCTION MATERIALS.																								104. CONCRETE NOT IN ACCORDANCE WITH THIS SPECIFICATION OR CONCRETE WHICH IS DEFECTIVE SHALL, AT THE DIRECTION OF THE PRINCIPAL, BE REMOVED FROM THE JOB AND REPLACED BY THE CONTRACTOR.										128. INSPECTION SHALL BE CARRIED OUT TO AS 1554.1									
7	8	76. IF ENCOUNTERED, CARE SHALL BE TAKEN TO MINIMISE DISTURBANCE TO THE UNDERLYING DRYSTONE WALL. ANY DISLODGED DRYSTONE AND/OR VOID CREATED BY EXCAVATION SHALL BE REPLACED AND INFILLED WITH GRANULAR FILL.																								105. THE CONCRETE SHALL BE PLACED IN SUCH A MANNER TO AVOID SEGREGATION OR LOSS OF MATERIALS. MAXIMUM FALL OF CONCRETE 1500mm OR USE ENCLOSED CHUTES OR SIMILAR.										129. IT IS THE CONTRACTOR'S RESPONSIBILITY TO ENSURE THAT STEELWORK IS SECURELY BRACED TEMPORARILY AS NECESSARY TO STABILISE THE STRUCTURE DURING ERECTION.									
		77. EXCAVATED MATERIALS SHALL BE STOCKPILED WITH HEIGHT NOT EXCEEDING 2 M.																								106. ALL EXTERNAL HORIZONTAL SURFACES TO HAVE A NOMINAL SURFACE FALL TO PREVENT WATER COLLECTION AND PONDING.										130. THE BUILDER SHALL PROVIDE ALL CLEATS AND DRILL ALL HOLES NECESSARY FOR FIXING STEEL TO STEEL WHETHER OR NOT DETAILED ON THE DRAWINGS.									
9	10	78. CREATE SEPARATE STOCKPILES FOR DIFFERENT SOIL TYPES. DO NOT MIX SUBGRADE WITH PAVEMENT OR TOPSOIL. PROVIDE ADEQUATE WATERING, DRAINAGE AND EROSION CONTROL.																								CONCRETE CURING										SEALANTS AND FILLERS									
		79. DO NOT ALLOW TRAFFIC ON STOCKPILES.																								107. CURING COMPOUNDS SHALL ONLY BE USED ON APPROVAL FROM THE PRINCIPAL. THEY SHALL BE WAX BASED, BE SUITABLY COLOURED FOR IDENTIFICATION PURPOSES, AND SHALL BE TESTED AND MEET ALL OF THE REQUIREMENTS OF AS 3799 - "LIQUID MEMBRANE-FORMING CURING COMPOUNDS FOR CONCRETE".										131. WHERE JOINTS DAYLIGHT AT FORMED JOINTS OR EDGES, THE SEALANT (BOTH TEMPORARY AND PERMANENT) MUST EXTEND DOWN THE VERTICAL FACE OF JOINTS TO PREVENT THE INGRESS OF INCOMPRESSIBLES DURING SUBSEQUENT PAVING. DIMENSIONS MUST BE EQUIVALENT TO THOSE FOR THE TOP JOINT BUT ROTATED 90°.									
11	12	80. ALL FINAL SURFACES SHALL BE CONSTRUCTED TO MATCH EXISTING LEVELS UNLESS OTHERWISE APPROVED BY THE PRINCIPAL.																								108. CURING COMPOUNDS SHALL BE SUITABLY COLOURED FOR IDENTIFICATION PURPOSES.										132. SEALANTS AND FILLERS MUST COMPLY WITH RMS R83.									
		DRAINAGE (GENERAL)																								109. THE CONTRACTOR SHALL DEMONSTRATE TO THE PRINCIPAL THAT THE CURING COMPOUND IS SUITABLE FOR ALL AMBIENT TEMPERATURES, AND THE PARTICULAR CURING COMPOUND SHALL BE APPROVED PRIOR TO USE.										DRILLING OF SOIL NAIL HOLES									
13	14	81. PRIOR TO CONSTRUCTION OF THE SURFACE DRAIN SPECIAL CONSIDERATION SHALL BE MADE IN CONSTRUCTING THE CUTOFF SUBSOIL DRAINAGE WHICH SHALL BE CONNECTED TO THE LOCAL DRAINAGE NETWORK.																								110. CURING COMPOUNDS SHALL NOT BE BASED ON PVA OR CHLORINATED RUBBER.										133. DRILLING FOR NAILS AND ANCHORS IS EXPECTED TO ENCOUNTER RELATIVELY HIGH STRENGTH COLLUVIUM BOULDERS AND BEDROCK. SELECTION OF DRILLING EQUIPMENT TO BE SUITABLE FOR EXPECTED GROUND CONDITIONS. USE ROTARY OR ROTARY-PERCUSSION METHODS AND EQUIPMENT FOR DRILLING TO ENSURE MINIMAL REMOLDING OF IN-SITU MATERIALS WITHIN THE DRILL HOLES. DO NOT USE DRILLING FLUIDS OTHER THAN AIR, UNLESS OTHERWISE APPROVED BY THE PRINCIPAL.									
		82. RESHAPE THE EXISTING SURFACE DRAINAGE AND LINED WITH 40MPA SHOTCRETE WITH DOSAGE RATE OF 15KG/M3.																								111. CURING COMPOUNDS SHALL BE SUPPLIED WITH A CERTIFICATE OF COMPLIANCE FROM THE MANUFACTURER IN ACCORDANCE WITH AS 3799 - SECTION 3.3. A COPY OF THIS SHALL BE PROVIDED TO THE PRINCIPAL PRIOR TO CONCRETE BEING MIXED.										134. THE CONTRACTOR SHALL INSTALL TEMPORARY CASING TO PREVENT DRILL-HOLE COLLAPSE WHERE REQUIRED.									
15	16	83. STEEL FLOAT ALL SHOTCRETE SURFACES.																								112. WATER FOR CURING SHALL BE POTABLE WATER WITH A pH BETWEEN 5 AND 7, AND SHALL NOT CONTAIN IMPURITIES IN SUFFICIENT QUANTITY TO CAUSE DISCOLOURATION OF THE CONCRETE.										135. WHERE THE GROUND IS SUSCEPTIBLE TO COLLAPSE CASING SHALL BE USED.									
		GABIONS AND RENO MATTRESS																								113. STEAM CURING IS NOT PERMITTED.										136. HOLE SHALL BE CLEANED OF ALL LOOSE OR DELETERIOUS MATERIAL ON COMPLETION OF DRILLING AND THE OPENING SEALED TO PREVENT ENTRY FROM FOREIGN MATTER.									
17	18	84. GABIONS: DOUBLE TWISTED, HEXAGONAL WIRE MESH GABIONS OF NOMINAL 80x100 MESH, WITH 3.4mm O/D FRAME WIRE AND 2.7mm MESH WIRE, COMPLETE WITH DIAPHRAGMS AT 1M CENTRES. ALL COMPONENTS TO BE MECHANICALLY CONNECTED AT THE PRODUCTION FACILITY WITH MINIMUM CONNECTION STRENGTH REQUIREMENTS AS PER TABLE 2 OF ASTM A975, INSTALLED IN ACCORDANCE WITH MANUFACTURER'S SPECIFICATIONS.																								REINFORCEMENT (FOOTINGS)										SOIL NAIL AND FACING REINFORCEMENT									
		85. ALL WIRE SHALL BE MILD STEEL, GALMAC COATED (95% ZINC + 5% ALUMINIUM MISCHMETAL ALLOY) TO THE REQUIREMENTS OF ASTM B750-99 AND HEAT BONDED THROUGH EXTRUSION WITH AN ADDITIONAL 0.5MM HEAVY DUTY GREY PVC COATING.																								114. STEEL REINFORCEMENT MUST BE IN ACCORDANCE WITH AS 4671, DOWELS MUST COMPLY WITH AS 3679.1.										137. SOIL NAILS TO BE DOUBLE ENCAPSULATED AND HOT-DIP GALVANIZED IN ACCORDANCE WITH AS4680.									
19	20	86. GABIONS MUST HAVE A VALID BRITISH BOARD OF AGRÉMENT (BBA) CERTIFICATE FOR GALFAN + PVC WIRE.																								115. MESH REINFORCEMENT SIZE MUST BE IN ACCORDANCE WITH DRAWING DETAILS.										138. DRILL HOLES FOR NAILS MUST BE AT LEAST 150mm DIAMETER AND PREPARED AS PER TFNSW R64 U.N.O.									
		87. THE GABION FILL MATERIAL SHALL BE IN ACCORDANCE WITH AS 2758.4 - 2000. THE MINIMUM ROCK SIZE SHALL BE 100mm AND THE MAXIMUM ROCK SIZE SHALL BE 250mm.																								116. REINFORCEMENT MAY BE DISPLACED SLIGHTLY WHERE NECESSARY TO CLEAR DOWELS, ANCHOR BOLTS, FORMED HOLES AND RECESSES.										139. SOIL NAILS TO BE GRADE D500N OR EQUIVALENT HIGH STRENGTH DEFORMED BARS.									
21	22	88. BIDIM A34 NON-WOVEN GEOTEXTILE (OR APPROVED EQUIVALENT) TO BE PLACED AT ALL ROCKFILL-SOIL INTERFACE, INSTALLED IN ACCORDANCE WITH MANUFACTURER'S SPECIFICATIONS.																								117. AUSTRALIAN STANDARD BAR SHAPES ARE IN ACCORDANCE WITH AS 1100.501.										140. SOIL NAILS MUST BE INSTALLED AS SHOWN IN THE SCHEDULES.									
		89. ROCK FILL MATERIAL BEHIND THE GABION SHALL HAVE A MINIMUM SIZE OF 75mm AND MAXIMUM SIZE OF 200mm. ROCK FILL TYPE A MATERIAL SHALL BE IN ACCORDANCE WITH AS 2758.4-2000.																								118. BAR SIZE IS THE NOMINAL DIAMETER IN MILLIMETRES, OR THE AS/NZS 4671 FABRIC NUMBER.										141. PROVIDE CENTRALISERS FOR NAILS AT INTERVAL NOT EXCEEDING 2000mm.									
23	24	PILES AND FOUNDATIONS																								119. THE GRADE OF REINFORCEMENT, IF NOT STATED ON THE DRAWINGS SHALL BE D500N TO AS/NZS 4671.										142. STEEL MESH MUST BE GRADE D500N IN ACCORDANCE WITH AS4671.									
		90. THE BEARING CAPACITY AT FOUNDING LEVEL SHALL BE VERIFIED BY A SUITABLY QUALIFIED GEOTECHNICAL ENGINEER PRIOR TO PLACEMENT OF CONCRETE.																								120. BAR BENDING AND HOOK DETAILS SHALL BE IN ACCORDANCE WITH SECTION 5.13 OF AS 5100.										143. BEARING PLATE MUST BE GRADE D250N IN ACCORDANCE WITH AS3678									
25	26	91. THE FOUNDATION MATERIAL SHALL BE INSPECTED BY A SUITABLY QUALIFIED GEOTECHNICAL ENGINEER TO CONFIRM THE EXPOSED FOUNDATION MATERIAL SATISFIES THE DESIGN ASSUMPTIONS. ANY MATERIAL ASSESSED TO BE UNSUITABLE (INCLUDING EXISTING FILL) SHALL BE REMOVED AND REPLACED.																								121. LAPS NOT SHOWN ON THE DRAWINGS SHALL BE STAGGERED SO THAT NO MORE THAN 50% OF BARS ARE LAPPED IN ANY CROSS SECTION.										144. SOIL NAIL FACING SHOTCRETE COVER TO REINFORCEMENT FROM AIR = 50mm									
		92. CLEANLINESS OF PILE BASES SHALL BE CONFIRMED ON SITE BY A SUITABLY QUALIFIED GEOTECHNICAL ENGINEER PRIOR TO CASTING OF PILES.																								122. REINFORCEMENT SYMBOLS COMMONLY USED ARE: N DENOTES GRADE 500 MPa N BARS TO AS 4671. R DENOTES GRADE 250 R HOT ROLLED PLAIN BARS TO AS 4671. SL DENOTES SQUARE REINFORCING FABRIC TO AS 4671. RL DENOTES RECTANGULAR REINFORCING FABRIC TO AS 4671. LTM DENOTES TRENCH MESH WHICH SHALL COMPLY WITH AS 4671.										145. SOIL NAIL FACING SHOTCRETE COVER TO REINFORCEMENT FROM GROUND = 75mm									
27	28	93. ALL BORED PILE WORK SHALL BE IN ACCORDANCE WITH AS2159.																								123. THE METHOD USED TO LABLE REINFORCEMENT ON THE DRAWINGS IS AS FOLLOWS:										146. SOIL NAIL 40mm COVER IS ACCEPTABLE TO STRIP DRAIN. CONSTRUCTION METHODOLOGY TO ENSURE COVER TO STRIP DRAIN IS ACHIEVED. LOCAL ADDITIONAL EXCAVATION MAY BE REQUIRED.									
		94. STEEL CASING (IF REQUIRED) AND REINFORCING CAGE SHALL BE SECURELY AND ACCURATELY HELD IN POSITION DURING CONCRETE PLACEMENT.																																		147. STEEL MESH MUST BE LAPPED AT ONE LOCATION NEATLY BY THREE WIRES SO AS NOT TO CREATE SHADOW IN THE SHOTCRETE.									
29	30	95. BORED PILES SHALL BE CONCRETED ON THE DAY OF APPROVAL UNLESS PERMISSION IS GIVEN OTHERWISE.																																		148. ALL STEEL MESH LAPS AND STARTER BARS SHALL BE CLEANED TO BARE MESH PRIOR TO FIXING THE ADJOINING STEEL OR SPRAYING THE NEXT PANEL.									
		96. BORED PILE TOE LEVELS, WHERE SHOWN ARE ESTIMATES ONLY AND SHALL BE ESTABLISHED DURING SITE INSPECTION OF WORK IN PROGRESS.																																		149. STEEL MESH LAPS MUST BE STAGGERED AND CUT SUCH THAT ONLY TWO SHEETS ARE LAPPED AT ONE LOCATION. LAPS ARE NOT ALLOWED OVER STRIP DRAINS.									
31	32	CONCRETE																																		150. NAILS, BEARING PLATES, WASHERS AND ALL STEEL REINFORCEMENT MUST BE HOT DIP GALVANISED AND IN ACCORDANCE WITH AS4680 WITH A COATING WEIGHT OF 600G/M2.									
		97. MINIMUM 28 DAY CHARACTERISTIC COMPRESSIVE STRENGTH OF ALL CONCRETE IS 40 MPa.																																		151. NAIL NUTS MUST BE GRADE C COMPLYING WITH AS1112.3 AND PROPERTY CLASS 5 COMPLYING WITH AS4291.2 OR EQUIVALENT TO SUIT THE THREADED END OF SOIL NAIL.									
33	34	98. COVER TO REINFORCEMENT NEAREST TO THE CONCRETE SURFACE SHALL BE 50MM UNLESS NOTED OTHERWISE.																																											
35	36																																												
37	38																																												
39	40																																												
41	42																																												
43	44																																												
45	46																																												
47	48																																												
49	50																																												
51	52																																												
53	54																																												
55	56																																												
57	58																																												
59	60																																												
61	62																																												
63	64																																												
65	66																																												
67	68																																												
69	70																																												
71	72																																												
73	74																																												
75	76																																												
77	78																																												
79	80																																												
81	82																																												
83	84																																												
85	86																																												
87	88																																												
89	90																																												
91	92																																												
93	94																																												
95	96																																												
97	98																																												
99	100																																												
101	102																																												
103	104																																												
105	106																																												
107	108																																												
109	110																																												
111	112																																												
113	114																																												
115	116																																												
117	118																																												
119	120																																												
121	122																																												
123	124																																												
125	126																																												
127	128																																												
129	130																																												
131	132																																												
133	134																																												
135	136																																												
137	138																																												
139	140																																												
141	142																																												
143	144																																												
145	146																																												
147	148																																												
149	150																																												
151	152																																												
153	154																																												
155	156																																												
157	158																																												
159	160																																												
161	162																																												
163	164																																												
165	166																																												
167	168																																												
169	170																																												
171	172																																												
173	174																																												
175	176																																												
177	178																																												
179	180																																												
181	182																																												
183	184																																												
185	186																																												
187	188																																												
189	190																																												
191	192																																												
193	194																																												
195	196																																												
197	198																																												
199	200																																												
201	202																																												
203	204																																												
205	206																																												
207	208																																												
209	210																																												
211	212																																												
213	214																																												
215	216																																												
217	218																																												

[illegible]



SITE NR00016 (PHOTO ON 05-09-2022)



SITE NR00016 (PHOTO ON 29-09-2022)



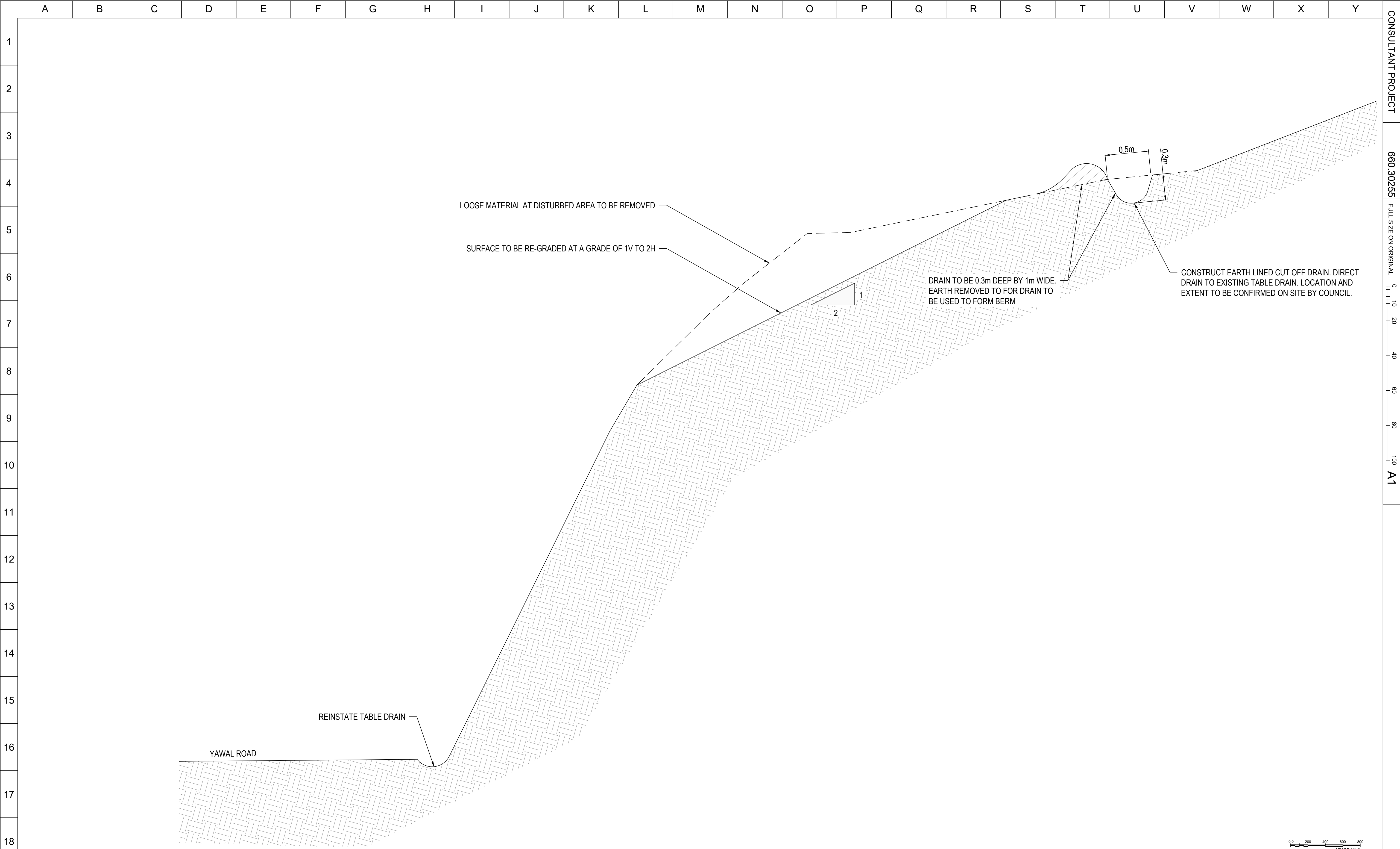
GENERAL SITE LOCATION
3D HILLSHADE

NOTE:
ALL MEASUREMENTS ARE APPROXIMATE ONLY AND ARE TO BE CONFIRMED ON SITE

- LEGEND**
- 2.00 — EXISTING SURFACE
 - EXISTING ROAD
 - - - - - EXTENT OF SITE WORKS
 - + BH 00 SLR BORE HOLE
 - EXISTING TABLE DRAIN TO BE REINSTATED
 - PROPOSED EARTH LINED CUT OF DRAIN
 - RESHAPING TREATMENT DETAILS (SEE SHEET 1281)

0 2 4 6 8
METRES
SCALE 1:200

PLOT DATE 23-Feb-2023 9:36:24 PM	REVISIONS					THIS DRAWING IS THE PROPERTY OF SLR CONSULTING AUSTRALIA AND MUST NOT BE RETAINED, COPIED OR USED WITHOUT THE CONSENT OF THE COMPANY.	DRAWN:	DATE:	<div><div><div><div>LEVEL 1, THE CENTRAL BUILDING INNOVATION CAMPUS, SQUIRES WAY NORTH WOLLONGONG NSW 2500 AUSTRALIA T: +61 2 4249 1004 F: +61 2 4249 1000 www.slrconsulting.com</div><div><div>SLR</div></div></div></div></div>	<div><div>Shoalhaven</div><div>City Council</div></div>	CLIENT: SHOALHAVEN CITY COUNCIL							
								PROJECT:			LANDSLIDE REMEDIATION DESIGN OF VARIOUS SITES							
								DRAWING TITLE:			SITE NR00016 GENERAL ARRANGEMENT LAYOUT PLAN							
		1	24.02.2023	ISSUED FOR CONSTRUCTION		MB	THIS DRAWING IS NOT TO BE USED FOR CONSTRUCTION UNLESS ENDORSED BELOW	DRG. CHECK:			DATE:	The content contained within this document may be based on third party data. SLR Consulting Australia Pty Ltd does not guarantee the accuracy of any such information.	FOR CONSTRUCTION	A1	DO NOT SCALE THIS DRAWING IF IN DOUBT ASK	SCALE: 1:200	DRAWING NUMBER: 660.30255-G-1280	ISSUE: 1
							DES. CHECK:	DATE:										
					Responsible Principal Signature	Date												



PLOT DATE 23-Feb-2023 9:36:31 PM	REVISIONS				THIS DRAWING IS THE PROPERTY OF SLR CONSULTING AUSTRALIA AND MUST NOT BE RETAINED, COPIED OR USED WITHOUT THE CONSENT OF THE COMPANY.	DRAWN: WP/GL	DATE: 20.10.2022	<div><div><div><div><div></div></div></div><div><div><div></div></div></div></div><div><div>LEVEL 1, THE CENTRAL BUILDING INNOVATION CAMPUS, SQUIRES WAY NORTH WOLLONGONG NSW 2500 AUSTRALIA T: +61 2 4249 1004 F: +61 2 4249 1000 www.slrconsulting.com</div></div></div> <div><div>The content contained within this document may be based on third party data. SLR Consulting Australia Pty Ltd does not guarantee the accuracy of any such information.</div></div>	<div><div><div><div></div></div></div><div><div><div></div></div></div></div> <div><div>Shoalhaven City Council</div></div>
-------------------------------------	-----------	--	--	--	---	-----------------	---------------------	---	---