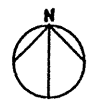


**NOTES:**

1. SERVICES ARE TO BE LAID CENTRALLY WITHIN THE ALLOCATION EXCEPT WATER WHICH SHALL BE LAID 2.4 m FROM THE PROPERTY BOUNDARY UNLESS OTHERWISE SPECIFIED BY THE ENGINEER.
2. CONSULTATION BETWEEN THE RELEVANT AUTHORITIES WILL BE REQUIRED WHEN CONFLICT OCCURS.
3. SEWERMANS SHALL GENERALLY BE LAID INSIDE THE PROPERTIES AT 1.5 m FROM BOUNDARIES. HOWEVER, IN SPECIAL CIRCUMSTANCES AND WITH THE CONSENT OF THE ENGINEER THEY MAY BE LAID IN THE FOOTWAY BETWEEN 3.0 AND 3.3 m FROM THE PROPERTY BOUNDARY.
4. COMMON TRENCHES MAY BE USED WITHIN THE ABOVE ALLOCATIONS, e.g. ELECTRICITY AND TELECOM; WATER AND ELECTRICITY SHALL NOT BE PLACED IN COMMON TRENCHES BECAUSE OF OCCUPATIONAL HEALTH AND SAFETY REQUIREMENTS.



SCALE 1: N.T.S.

**SUBDIVISION  
CODE**

**CITY OF SHOALHAVEN  
FOOTPATH ALLOCATION  
SPACE FOR SERVICES**

**ENGINEERING WORKS  
MANAGER**

DRAWN	C. FIESLER
CHECKED	J. BLOM
PLAN REF.	263730
DATE	05. MAY 1984