

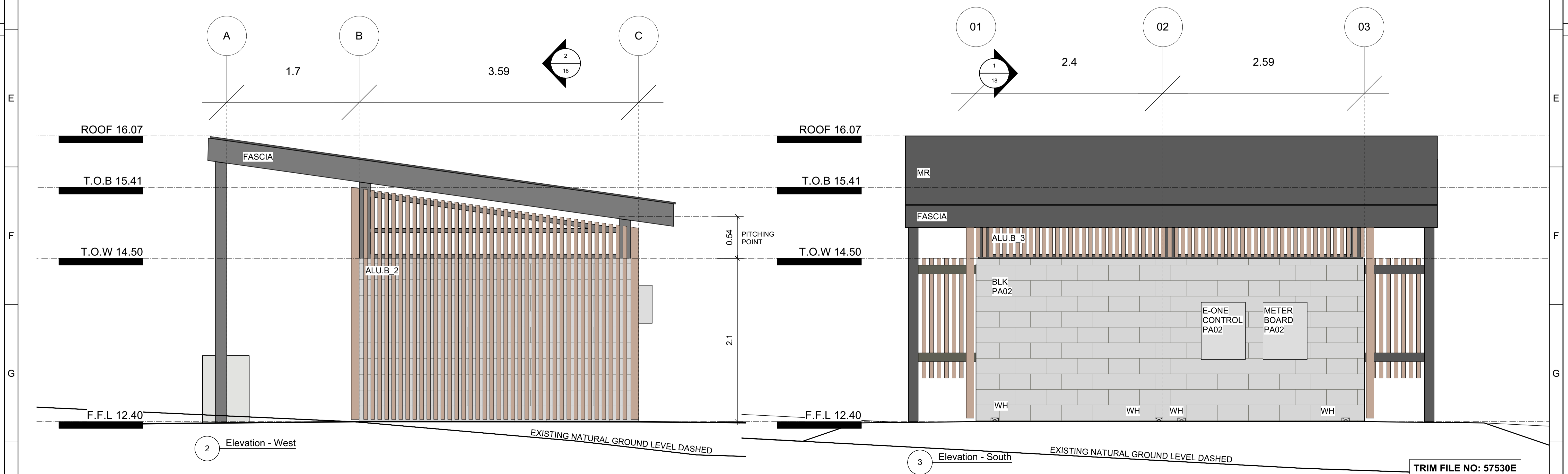
LEGEND

- ALU.B ALUMINIUM BATTEN
- BLK CONCRETE BLOCK
- CONC CONCRETE
- D1 DOOR 1
- D2 DOOR 2
- FASCIA FASCIA BOARD TO ROOF
- HBT HANDBASIN TAP
- PA02 PAINT FINISH
- PA07 POWDERCOAT FINISH
- POST STEEL POST
- SIGN1 LEFT HAND TRANSFER SIGN
- SIGN2 RIGHT HAND TRANSFER SIGN
- TAP CLEANERS TAP
- WH WEEPHOLE CUT INTO BASE OF WALL (100mm x 50mm)

NOTE:

REFER TO DRAWING 5518_19 FOR SETOUT OF FIXTURES.
 REFER TO DRAWING 5518_22 FOR DETAILED INFORMATION ON SELECTED FIXTURES AND FINISHES.
 REFER TO ENGINEER'S DRAWINGS FOR SERVICES CONNECTION DETAILS.

1 Elevation - North



2 Elevation - West

3 Elevation - South

TRIM FILE NO: 57530E

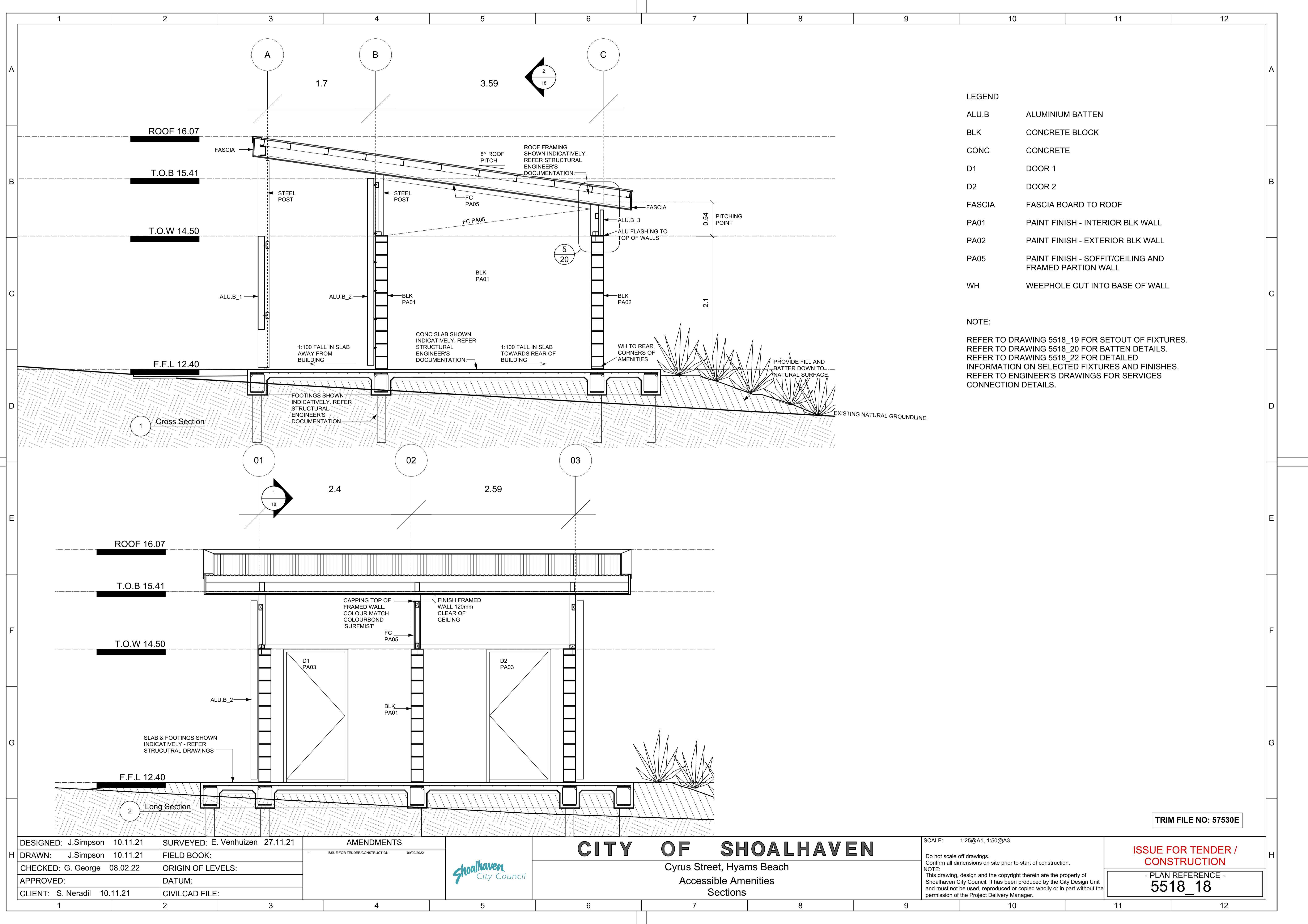
DESIGNED: J.Simpson 10.11.21	SURVEYED: E. Venhuizen 27.11.21	AMENDMENTS
DRAWN: J.Simpson 10.11.21	FIELD BOOK:	1 ISSUE FOR TENDER/CONSTRUCTION 09/02/2022
CHECKED: G. George 08.02.22	ORIGIN OF LEVELS:	
APPROVED:	DATUM:	
CLIENT: S. Neradil 10.11.21	CIVILCAD FILE:	



CITY OF SHOALHAVEN
 Cyrus Street, Hyams Beach
 Accessible Amenities
 Elevations

SCALE: 1:25@A1, 1:50@A3
 Do not scale off drawings.
 Confirm all dimensions on site prior to start of construction.
 NOTE:
 This drawing, design and the copyright therein are the property of Shoalhaven City Council. It has been produced by the City Design Unit and must not be used, reproduced or copied wholly or in part without the permission of the Project Delivery Manager.

ISSUE FOR TENDER / CONSTRUCTION
 - PLAN REFERENCE -
5518_17



LEGEND

- ALU.B ALUMINIUM BATTEN
- BLK CONCRETE BLOCK
- CONC CONCRETE
- D1 DOOR 1
- D2 DOOR 2
- FASCIA FASCIA BOARD TO ROOF
- PA01 PAINT FINISH - INTERIOR BLK WALL
- PA02 PAINT FINISH - EXTERIOR BLK WALL
- PA05 PAINT FINISH - SOFFIT/CEILING AND FRAMED PARTION WALL
- WH WEEPHOLE CUT INTO BASE OF WALL

NOTE:

REFER TO DRAWING 5518_19 FOR SETOUT OF FIXTURES.
 REFER TO DRAWING 5518_20 FOR BATTEN DETAILS.
 REFER TO DRAWING 5518_22 FOR DETAILED INFORMATION ON SELECTED FIXTURES AND FINISHES.
 REFER TO ENGINEER'S DRAWINGS FOR SERVICES CONNECTION DETAILS.

TRIM FILE NO: 57530E

DESIGNED: J.Simpson 10.11.21	SURVEYED: E. Venhuizen 27.11.21
DRAWN: J.Simpson 10.11.21	FIELD BOOK:
CHECKED: G. George 08.02.22	ORIGIN OF LEVELS:
APPROVED:	DATUM:
CLIENT: S. Neradil 10.11.21	CIVILCAD FILE:

AMENDMENTS	
1	ISSUE FOR TENDER/CONSTRUCTION 09/02/2022

1	ISSUE FOR TENDER/CONSTRUCTION 09/02/2022
---	--



CITY OF SHOALHAVEN
 Cyrus Street, Hyams Beach
 Accessible Amenities
 Sections

SCALE: 1:25@A1, 1:50@A3
 Do not scale off drawings.
 Confirm all dimensions on site prior to start of construction.
 NOTE:
 This drawing, design and the copyright therein are the property of Shoalhaven City Council. It has been produced by the City Design Unit and must not be used, reproduced or copied wholly or in part without the permission of the Project Delivery Manager.

ISSUE FOR TENDER / CONSTRUCTION
 - PLAN REFERENCE -
5518_18