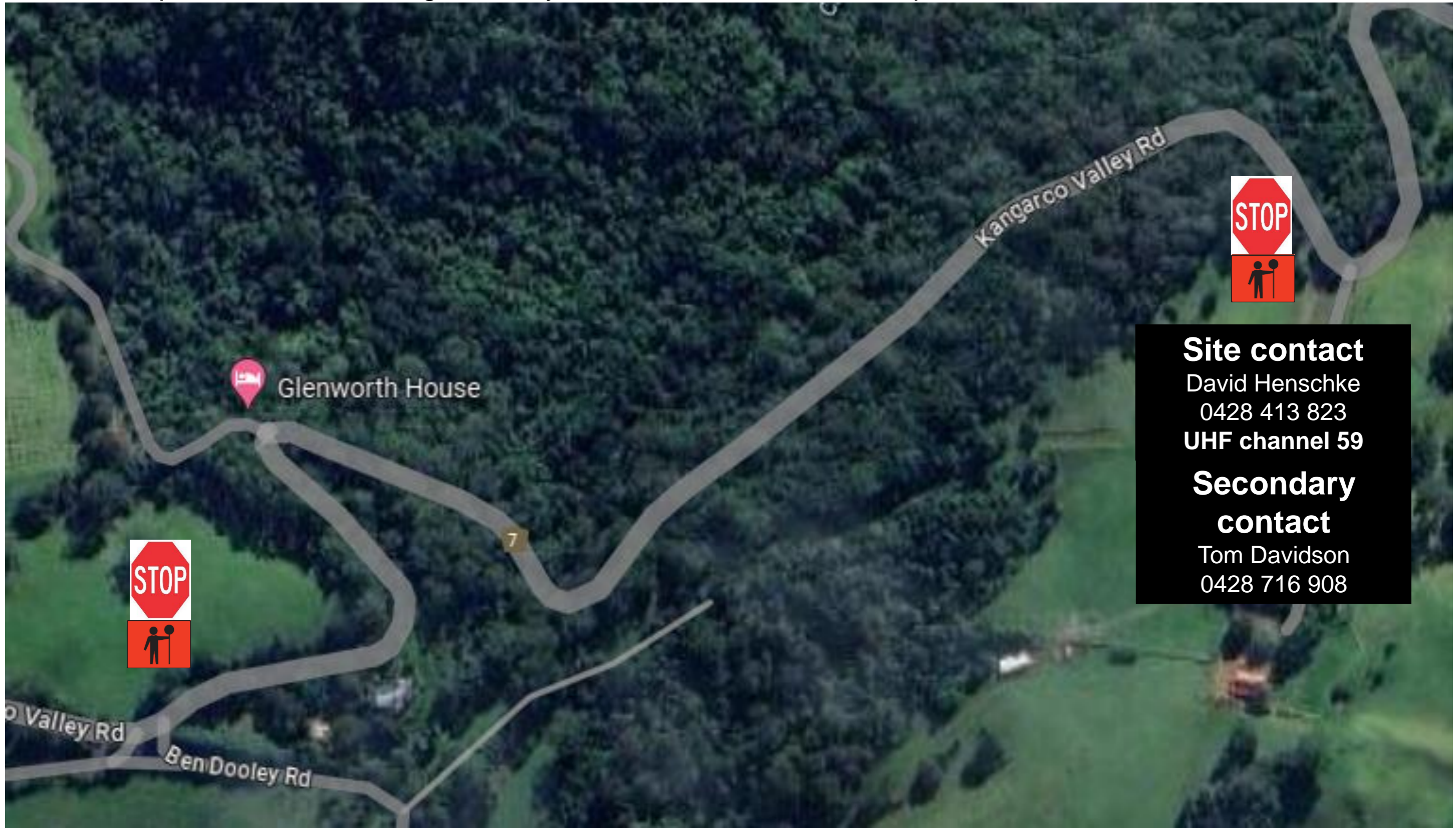


# Kangaroo Valley Road

(-34.764314, 150.653232)



The road is closed for road construction from 24/06/2024 from 7:00am – 4:00pm, with a 12pm opening for waiting traffic Monday – Friday, ongoing. Call ahead for the road to be cleared as per below details. Once on site comms with site crew via **UHF 59**. The road way has a vehicle length limit of 5 metres las the roadway is narrowed due to the road / landslip. Traffic control manage one way contraflow when the road is open and can be contacted on **UHF 59**.



## Site contact

David Henschke  
0428 413 823

**UHF channel 59**

## Secondary contact

Tom Davidson  
0428 716 908

## Closed road – Emergency services access

Symal will maintain lines of communication with emergency services throughout the construction process updating council via email of works, site contact information and times of works.

Symal will create small laydown areas (where possible) close to the works so all plant can be moved off the road in case of emergency.

Symal will stop work at all times when contacted by emergency services Police, Fire and Ambulance.

Symal will stop, move the piling rig and other plant off the road and make the road serviceable for emergency vehicles.

At anytime there is a fire, house fire or bush fire within the valley no work will start or work will be stopped immediately. Symal will have a water cart and fire extinguishers on site in case of construction fire on site.

If approached by a member of the public with a medical emergency from the high side of the construction works, Symal Supervisor will contact Paramedics immediately, stop works on the construction site and assist the injured personnel by foot or stretcher to the other side of the construction site.

If the injured person requires minor first aid, the first aid officer will assist.

All construction site personnel will undergo a toolbox talk on this procedure prior to starting work on site. An emergency drill will be undertaken so all workers are aware of their role in case of an emergency and if emergency access is required.

# Site First Aider/Emergency Contact



**Courtney Brighton**

---

**First Aider**

---

Site Engineer

---

0456 500 018

---



**David Henschke**

---

**First Aider**

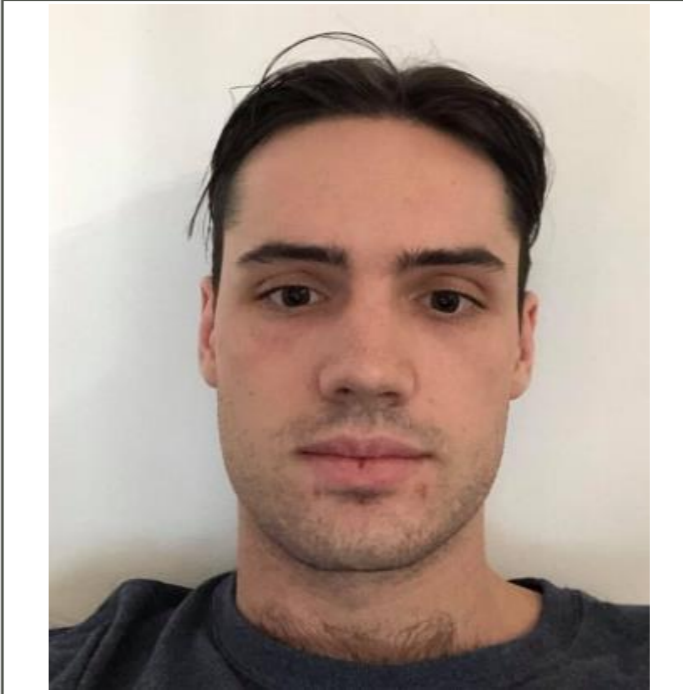
---

Site Supervisor

---

0428 413 823

---



**Tom Davidson**

---

**First Aider**

---

Project Engineer

---

0428 716 908

---

## Emergency service / authority contact details

---

Police / Ambulance / Fire	000
Site Emergency reporting	UHF – 59 David Henschke 0428 876 369
Poisons Hotline	13 11 26
Safe Work NSW	13 10 50
Roads and Maritime Services	13 22 13
Local Council – Shoalhaven City Council	(02) 4429 3111
Environment Protection Authority	131 555
Essential Energy	13 20 80
Office of the Federal Safety Commissioner	1800 652 500

---

## Project management team contact details

---

Construction Manager	Duncan Lambert	0417 369 226
Project Manager	Andrew Fuller	0418 731 058
Superintendent Site Supervisor	Luke Burgess David Henschke Andrew Weldon	0408 935 510 0428 413 823 0428 876 369
Engineers	Tom Davidson Courtney Brighton	0428 716 908 0456 500 018
HSEQ Manager	Dan Isaac	0408 645 557

---

## In case of fire

**Remove people** from immediate danger

**Alert the fire service** - call 000

**Confine fire & smoke** - close doors & windows (if safe to do so)

**Evacuate** to the Assembly Area

## Evacuation procedures

### Stage 1: remove people from immediate danger

Occupants and staff in the immediate danger area are to assemble a safe distance away from the fire and smoke. When the area has been evacuated all doors and windows should be closed to contain fire.

### Stage 2: evacuation of entire complex

Should the emergency necessitate evacuation of the whole building, the Fire Warden will direct occupants to the **emergency assembly area** via the nearest safe exit.

### Stage 3: roll call

To be conducted as soon as possible and to ensure all persons are accounted for. Report all missing persons to **fire officers**.