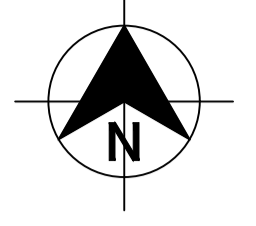


COORDINATE DATUM: MGA2020

EPA ID	Type of Monitoring Point	Location Description	E	N
1	Influent volume monitoring	Inlet works	273392.4	6097046.1
2	Effluent volume monitoring	Effluent flow meter	273466.8	6096995.4
3	Effluent quality monitoring	Final effluent sampling point	273493.5	6096995.7



CONJOLA NATIONAL PARK

GAZETTED 30/03/2001

BENDALONG ENTRANCE ROAD

EPA ID 1
INFLUENT VOLUME
MONITORING

DP 1071258
SCC

EPA ID 3
EFFLUENT QUALITY
MONITORING

EPA ID 2
EFFLUENT VOLUME
MONITORING

PRELIMINARY ISSUE
NOT FOR CONSTRUCTION

No.	REVISION DETAILS	DWN	DATE
1			
2			
3			

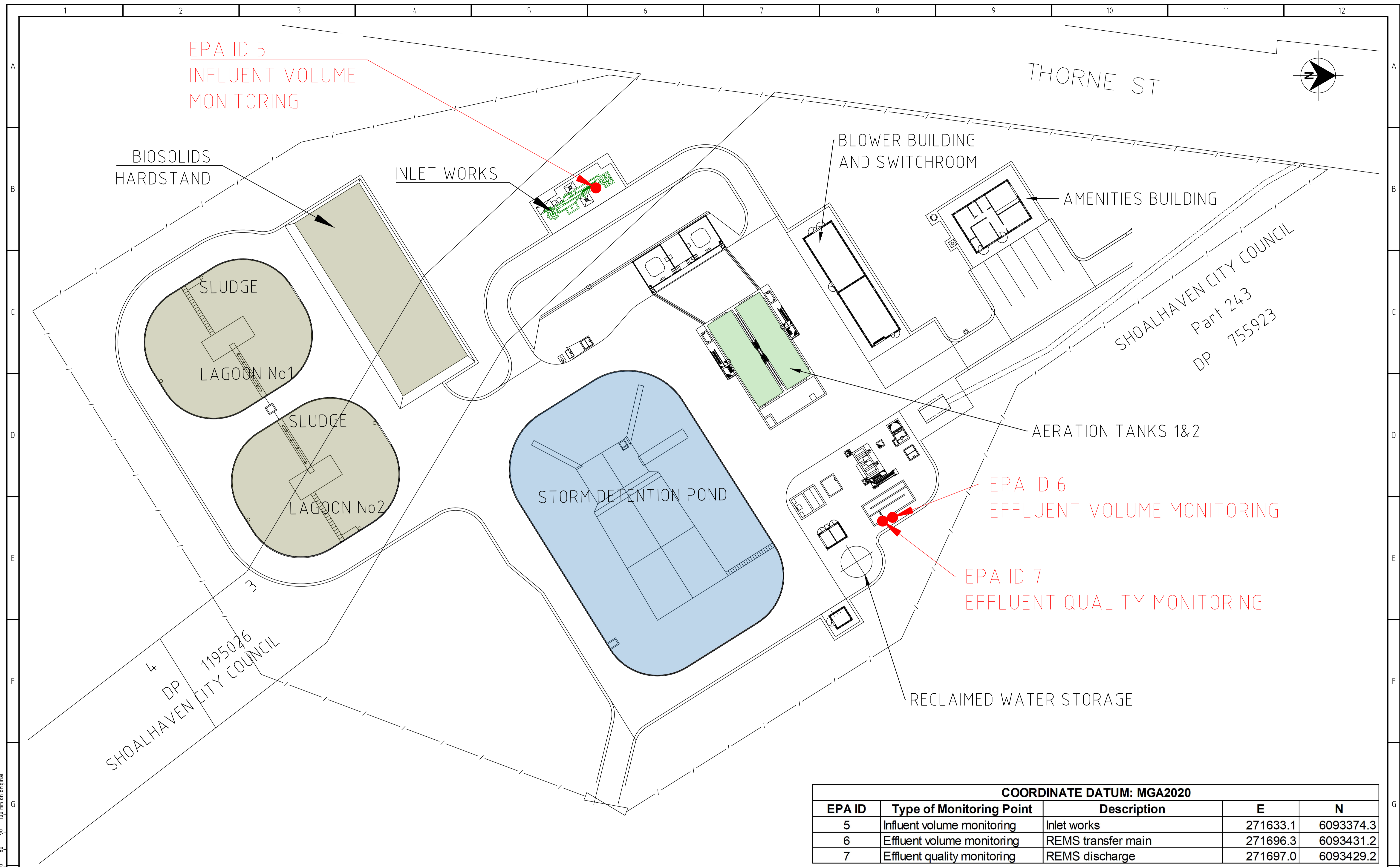
CONSULTANT DETAILS:

SIZE:	A1	SCALE FACTOR:	1:500	CO-ORDINATE SYSTEM:	MGA2020
		HEIGHT DATUM:	AHD		

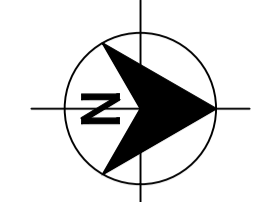
City Administrative Centre
PO Box 42, Nowra, NSW 2541
Ph 02 4429 3111
www.shoalwater.nsw.gov.au

SURVEYED:	DATE:	COMPANY:
DESIGNED:	DATE:	COMPANY:
DRAWN:	DATE:	COMPANY:
CHECKED:	DATE:	COMPANY:
APPROVED:	DATE:	COMPANY:
MA	07-23	SCC
DP	07-23	SCC
IW	09-23	SCC

TITLE: CONJOLA REGIONAL SEWERAGE SCHEME BENDALONG STP PLAN SHOWING EPA ID 1, 2 & 3			
CONSULTANT REFERENCE No.	INDEX No.	DRAWING No.	SHEET
	23650	165	x
			REV No.
			x



THORNE ST



EPA ID 5
INFLUENT VOLUME
MONITORING

EPA ID 6
EFFLUENT VOLUME MONITORING

EPA ID 7
EFFLUENT QUALITY MONITORING

COORDINATE DATUM: MGA2020				
EPA ID	Type of Monitoring Point	Description	E	N
5	Influent volume monitoring	Inlet works	271633.1	6093374.3
6	Effluent volume monitoring	REMS transfer main	271696.3	6093431.2
7	Effluent quality monitoring	REMS discharge	271697.0	6093429.2

CONSULTANT DETAILS:

NOT TO SCALE

City Administrative Centre
PO Box 42, Nowra, NSW 2541
Ph 02 4429 3111
www.shoalwater.nsw.gov.au

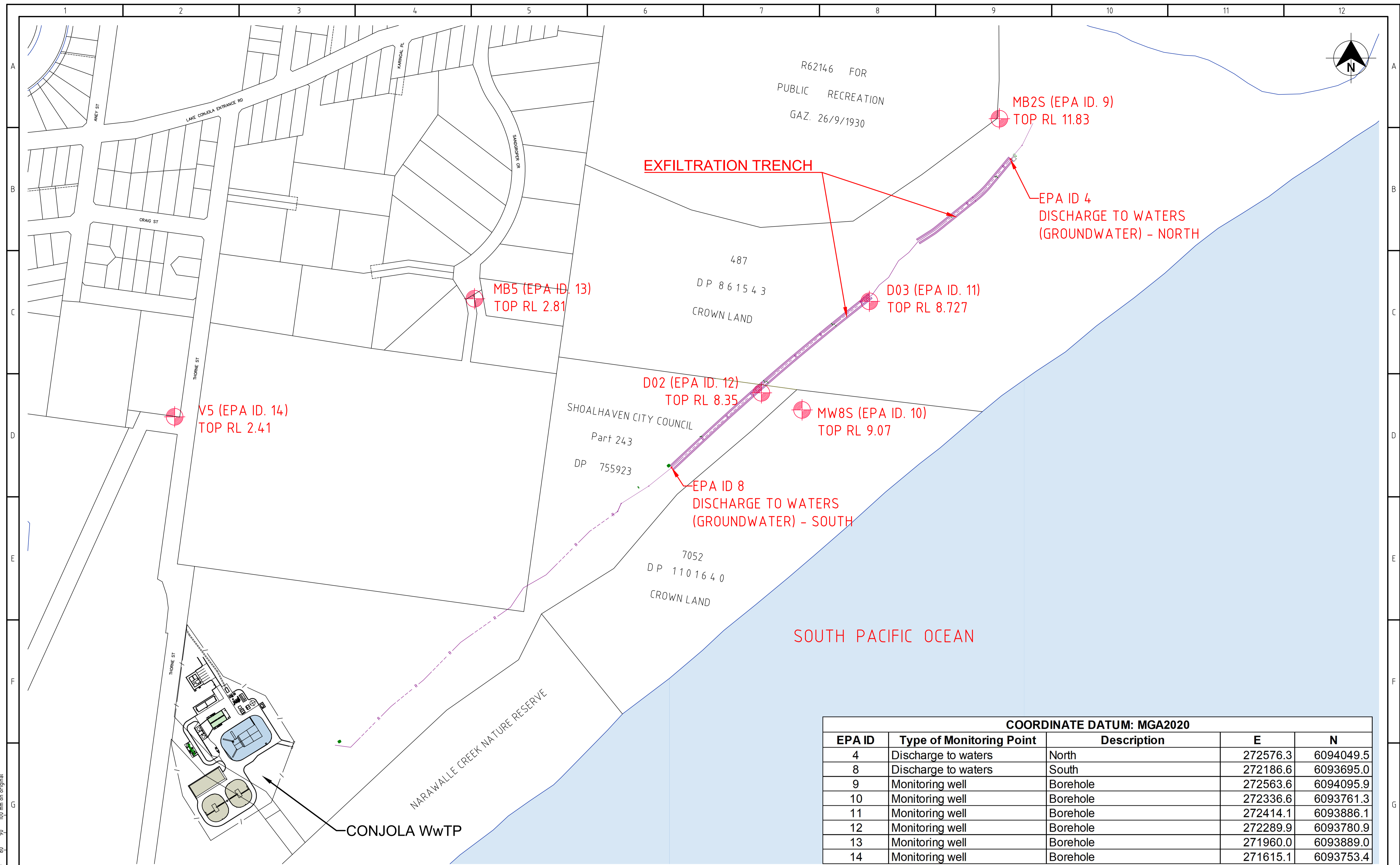
SIZE: A1 SCALE FACTOR: N.T.S. CO-ORDINATE SYSTEM: MGA20
HEIGHT DATUM: AHD

SURVEYED:	DATE:	COMPANY:
DESIGNED:	DATE:	COMPANY:
DRAWN: MA	DATE: 2023-05	COMPANY: SCC
CHECKED: DP	DATE: 25-09-23	COMPANY: SCC
APPROVED:	DATE:	COMPANY:

TITLE:
CONJOLA REGIONAL SEWERAGE SCHEME
CONJOLA WwTP
EPA MONITORING POINTS
EPA ID 5, 6, 7

CONSULTANT REFERENCE No.	INDEX No.	DRAWING No.	SHEET	REV No.
	24200	165	A	

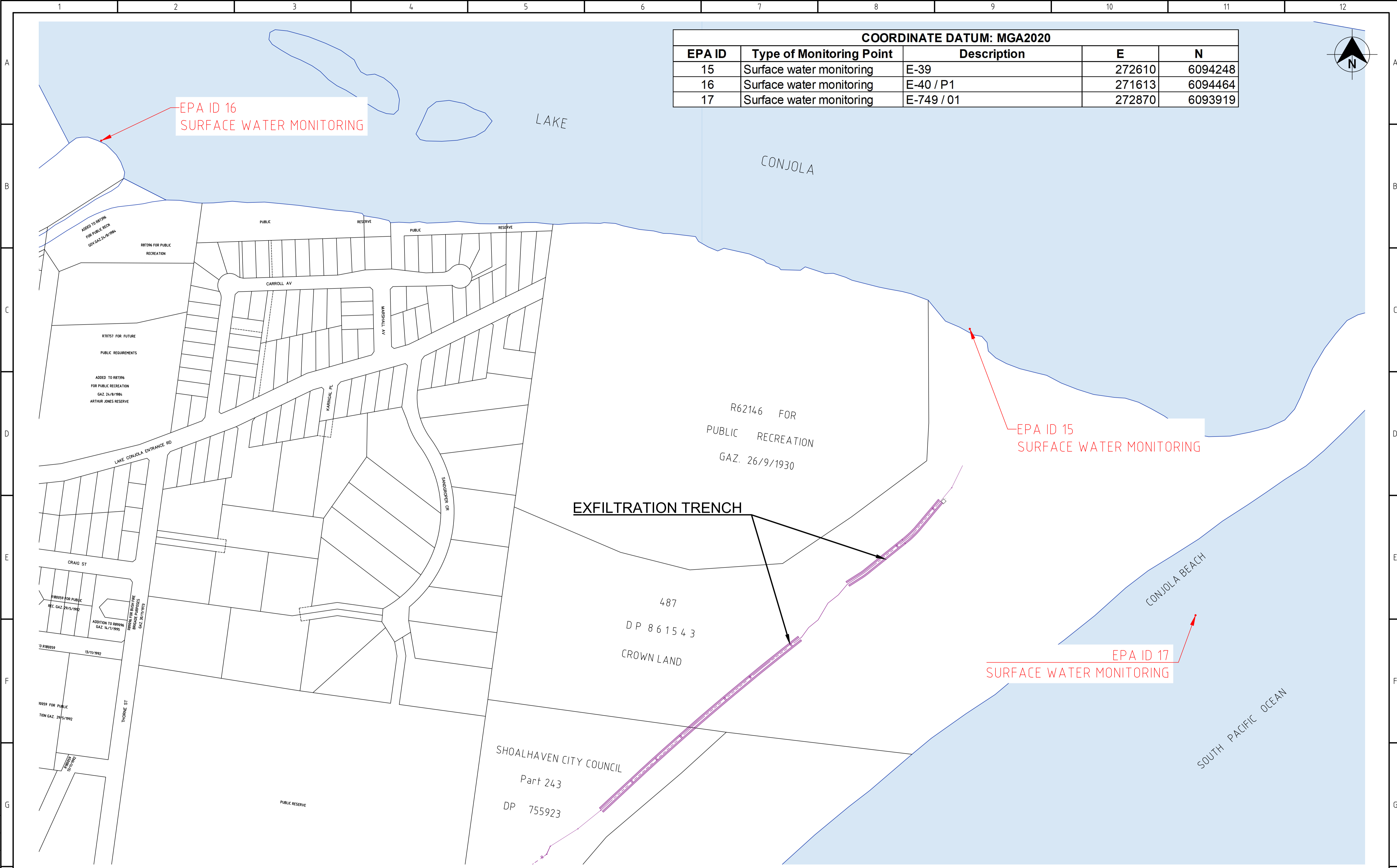
No.	REVISION DETAILS	DWN	DATE
1			
2			
3			



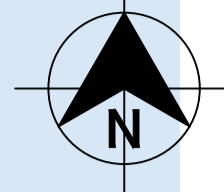
COORDINATE DATUM: MGA2020

EPA ID	Type of Monitoring Point	Description	E	N
4	Discharge to waters	North	272576.3	6094049.5
8	Discharge to waters	South	272186.6	6093695.0
9	Monitoring well	Borehole	272563.6	6094095.9
10	Monitoring well	Borehole	272336.6	6093761.3
11	Monitoring well	Borehole	272414.1	6093886.1
12	Monitoring well	Borehole	272289.9	6093780.9
13	Monitoring well	Borehole	271960.0	6093889.0
14	Monitoring well	Borehole	271615.1	6093753.4

CONSULTANT DETAILS:				 City Administrative Centre PO Box 42, Nowra, NSW 2541 Ph 02 4429 3111 www.shoalwater.nsw.gov.au	SURVEYED: DATE: COMPANY:			TITLE: CONJOLA REGIONAL SEWERAGE SCHEME EXFILTRATION EPA MONITORING POINTS EPA ID 4, 8, 9, 10, 11, 12, 13, 14				
NOT TO SCALE					DESIGNED: DATE: COMPANY:							
REVISION DETAILS					DRAWN: MA DATE: 2023-05 COMPANY: SCC			CONSULTANT REFERENCE No. INDEX No. DRAWING No. SHEET REV No.				
No. 1 2 3 4				CHECKED: DP DATE: 25-09-23 COMPANY: SCC			24200 165 B					
DWN DATE				CO-ORDINATE SYSTEM: MGA20 HEIGHT DATUM: AHD			24200			165		
No. 1 2 3 4							24200			165		



COORDINATE DATUM: MGA2020				
EPA ID	Type of Monitoring Point	Description	E	N
15	Surface water monitoring	E-39	272610	6094248
16	Surface water monitoring	E-40 / P1	271613	6094464
17	Surface water monitoring	E-749 / 01	272870	6093919



100 mm on original

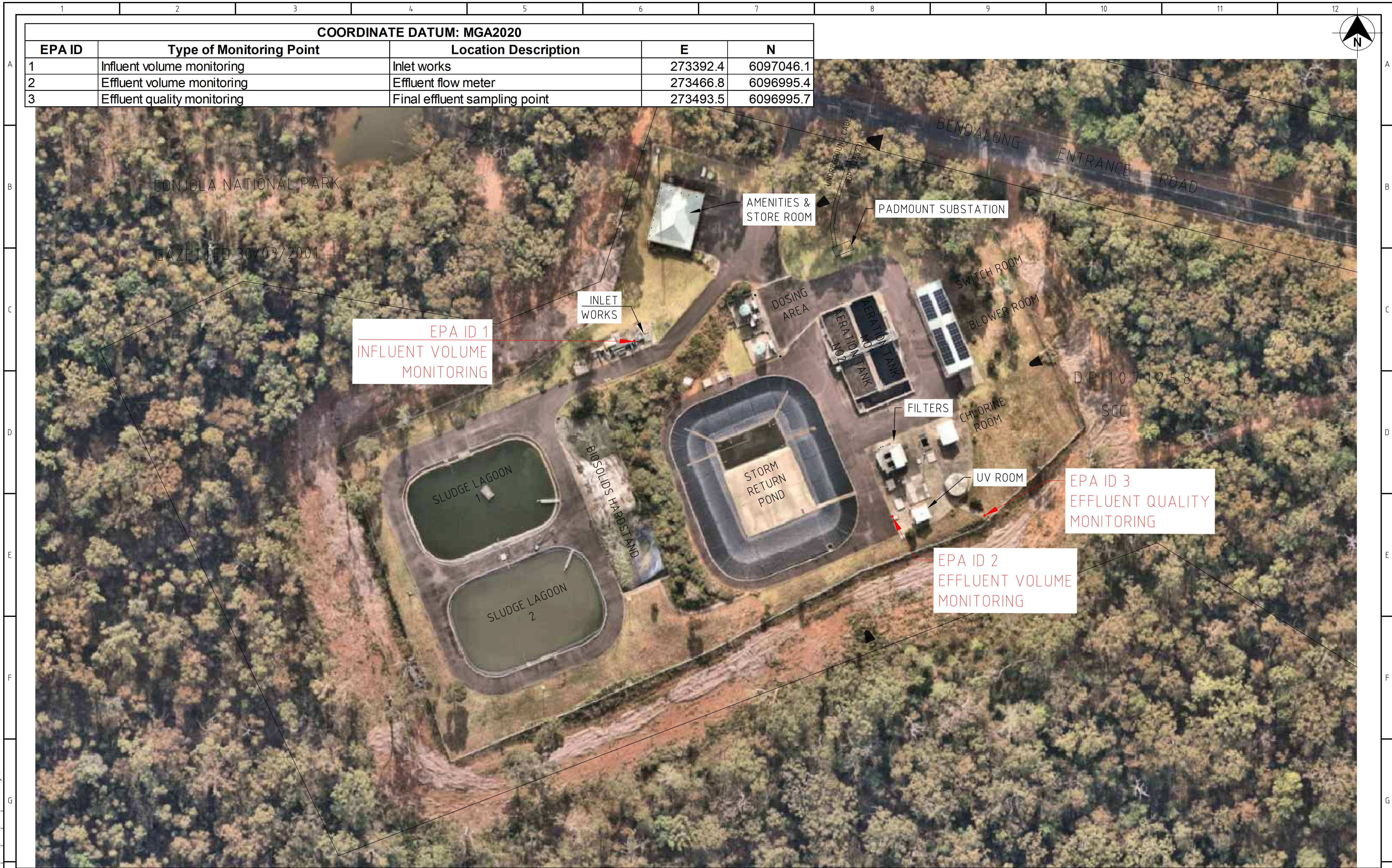
No.	1	2	3	4	5

CONSULTANT DETAILS:		
SIZE:	A1	
SCALE FACTOR:	N.T.S.	
CO-ORDINATE SYSTEM:	MGA20	
HEIGHT DATUM:	AHD	

City Administrative Centre
 PO Box 42, Nowra, NSW 2541
 Ph 02 4429 3111
 www.shoalwater.nsw.gov.au

SURVEYED:	DATE:	COMPANY:
DESIGNED:	DATE:	COMPANY:
DRAWN:	DATE:	COMPANY:
CHECKED:	DATE:	COMPANY:
APPROVED:	DATE:	COMPANY:

TITLE:				
CONJOLA REGIONAL SEWERAGE SCHEME EXFILTRATION EPA MONITORING POINTS EPA ID 15, 16, 17				
CONSULTANT REFERENCE No.	INDEX No.	DRAWING No.	SHEET	REV No.
		24200	165	C



COORDINATE DATUM: MGA2020

EPA ID	Type of Monitoring Point	Location Description	E	N
1	Influent volume monitoring	Inlet works	273392.4	6097046.1
2	Effluent volume monitoring	Effluent flow meter	273466.8	6096995.4
3	Effluent quality monitoring	Final effluent sampling point	273493.5	6096995.7

EPA ID 1
INFLUENT VOLUME
MONITORING

EPA ID 3
EFFLUENT QUALITY
MONITORING

EPA ID 2
EFFLUENT VOLUME
MONITORING

CONSULTANT DETAILS:				 City Administrative Centre PO Box 42, Nowra, NSW 2541 Ph 02 4429 3111 www.shoalwater.nsw.gov.au	SURVEYED:	DATE:	COMPANY:	TITLE: CONJOLA REGIONAL SEWERAGE SCHEME BENDALONG STP PLAN SHOWING EPA ID 1, 2 & 3						
					DESIGNED:	DATE:	COMPANY:							
							DRAWN:	DATE:	COMPANY:	CONSULTANT REFERENCE No. INDEX No. DRAWING No. SHEET REV No.				
				SIZE: A1	SCALE FACTOR:	CO-ORDINATE SYSTEM: MGA2020	MA	07-23	SCC					23650
				HEIGHT DATUM: AHD	CHECKED:	DATE:	COMPANY:	DP	07-23	SCC				
					APPROVED:	DATE:	COMPANY:	IW	09-23	SCC				



EPA ID 5
INFLUENT VOLUME
MONITORING

BIOSOLIDS
HARDSTAND

INLET WORKS

BLOWER BUILDING
AND SWITCHROOM

AMENITIES BUILDING

SLUDGE

LAGOON No1

SLUDGE

LAGOON No2

STORM DETENTION POND

AERATION TANKS 1&2

EPA ID 6
EFFLUENT VOLUME MONITORING

EPA ID 7
EFFLUENT QUALITY MONITORING

RECLAIMED WATER STORAGE

THORNE ST

SHOALHAVEN CITY COUNCIL
Part 243
DP 755923

SHOALHAVEN CITY COUNCIL
DP 1195026

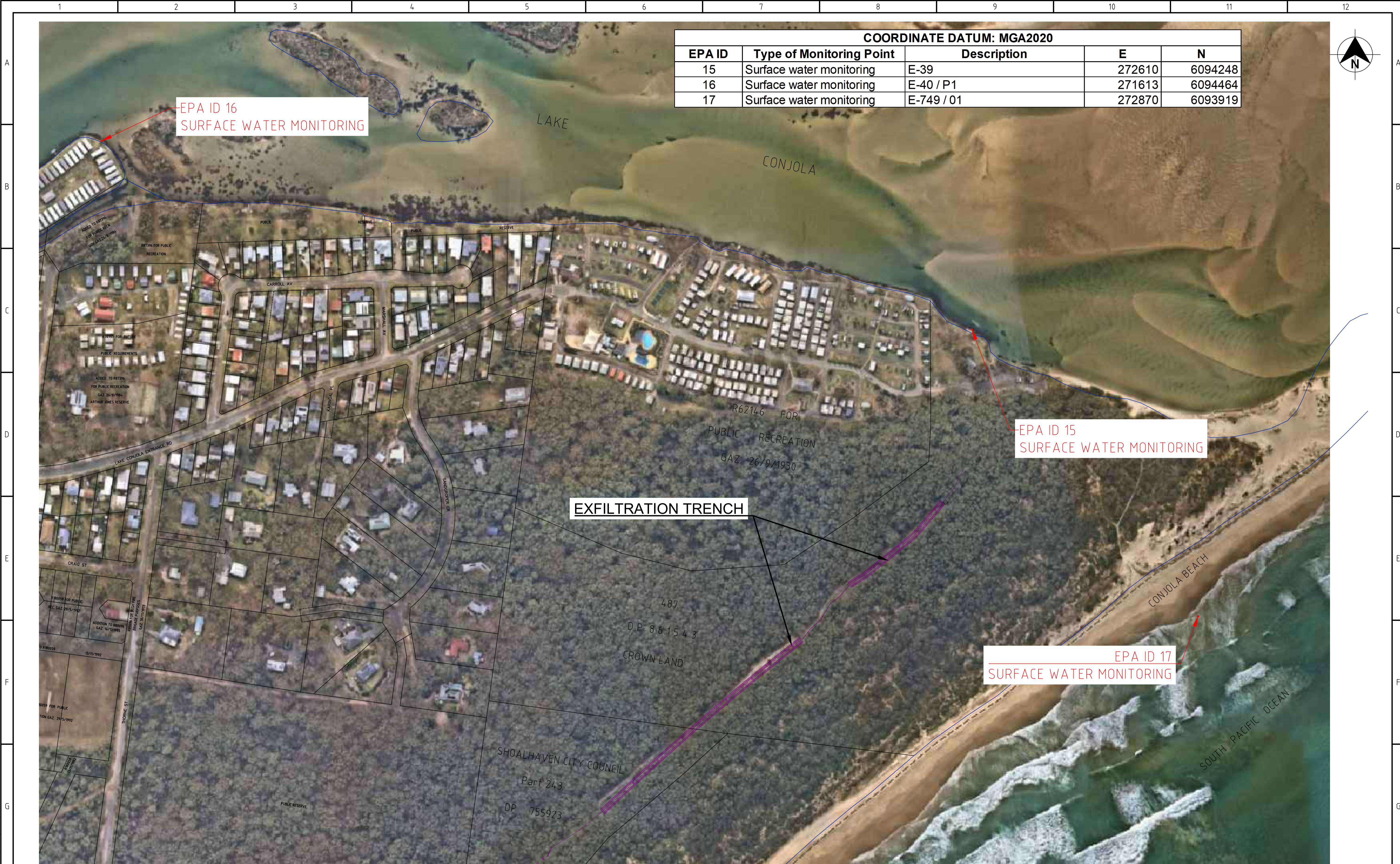
COORDINATE DATUM: MGA2020				
EPA ID	Type of Monitoring Point	Description	E	N
5	Influent volume monitoring	Inlet works	271633.1	6093374.3
6	Effluent volume monitoring	REMS transfer main	271696.3	6093431.2
7	Effluent quality monitoring	REMS discharge	271697.0	6093429.2

REVISION DETAILS				CONSULTANT DETAILS:				SURVEYED: DATE: COMPANY:			TITLE:			
No.	1	2	3	4	5	6	7	8	9	10	11	12	CONJOLA REGIONAL SEWERAGE SCHEME CONJOLA WwTP EPA MONITORING POINTS EPA ID 5, 6, 7	
				NOT TO SCALE				DRAWN: MA DATE: 2023-05 COMPANY: SCC			CONSULTANT REFERENCE No. INDEX No. DRAWING No. SHEET REV No.			
				SIZE: A1 SCALE FACTOR: N.T.S. CO-ORDINATE SYSTEM: MGA20 HEIGHT DATUM: AHD				CHECKED: DP DATE: 25-09-23 COMPANY: SCC			24200 165 A			
				City Administrative Centre PO Box 42, Nowra, NSW 2541 Ph 02 4429 3111 www.shoalwater.nsw.gov.au				APPROVED: DATE: COMPANY:						

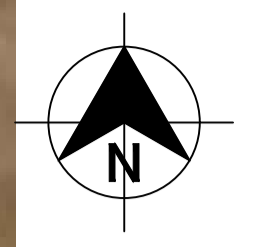


COORDINATE DATUM: MGA2020				
EPA ID	Type of Monitoring Point	Description	E	N
4	Discharge to waters	North	272576.3	6094049.5
8	Discharge to waters	South	272186.6	6093695.0
9	Monitoring well	Borehole	272563.6	6094095.9
10	Monitoring well	Borehole	272336.6	6093761.3
11	Monitoring well	Borehole	272414.1	6093886.1
12	Monitoring well	Borehole	272289.9	6093780.9
13	Monitoring well	Borehole	271960.0	6093889.0
14	Monitoring well	Borehole	271615.1	6093753.4

REVISION DETAILS				CONSULTANT DETAILS:		SURVEYED:		DATE:		COMPANY:		TITLE:			
No.	1	2	3	A1	N.T.S.	City Administrative Centre PO Box 42, Nowra, NSW 2541 Ph 02 4429 3111 www.shoalwater.nsw.gov.au		MA	2023-05	SCC	CONJOLA REGIONAL SEWERAGE SCHEME EXFILTRATION EPA MONITORING POINTS EPA ID 4, 8, 9, 10, 11, 12, 13, 14				
				SIZE:	SCALE FACTOR:	CO-ORDINATE SYSTEM:	MGA20	CHECKED:	DATE:	COMPANY:	CONSULTANT REFERENCE No.	INDEX No.	DRAWING No.	SHEET	REV No.
				A1	N.T.S.	HEIGHT DATUM:	AHD	DP	25-09-23	SCC	24200	165	B		



COORDINATE DATUM: MGA2020				
EPA ID	Type of Monitoring Point	Description	E	N
15	Surface water monitoring	E-39	272610	6094248
16	Surface water monitoring	E-40 / P1	271613	6094464
17	Surface water monitoring	E-749 / 01	272870	6093919



EXFILTRATION TRENCH

**EPA ID 16
SURFACE WATER MONITORING**

**EPA ID 15
SURFACE WATER MONITORING**

**EPA ID 17
SURFACE WATER MONITORING**

100 mm on original

REVISION DETAILS		CONSULTANT DETAILS:		SURVEYED: DATE: COMPANY:		TITLE:		CONSULTANT REFERENCE No.		INDEX No.		DRAWING No.		SHEET		REV No.	
No.	1	2	3	NOT TO SCALE		MA	DATE: 10-23	COMPANY: SCC	CONJOLA REGIONAL SEWERAGE SCHEME EXFILTRATION EPA MONITORING POINTS EPA ID 15, 16, 17		24200		165		C		
SIZE:	A1	SCALE FACTOR:	N.T.S.	CO-ORDINATE SYSTEM:	MGA20	CHECKED:	DP	DATE: 19-10-23	COMPANY:								
				HEIGHT DATUM:	AHD	APPROVED:		DATE:									
				City Administrative Centre PO Box 42, Nowra, NSW 2541 Ph 02 4429 3111 www.shoalwater.nsw.gov.au													