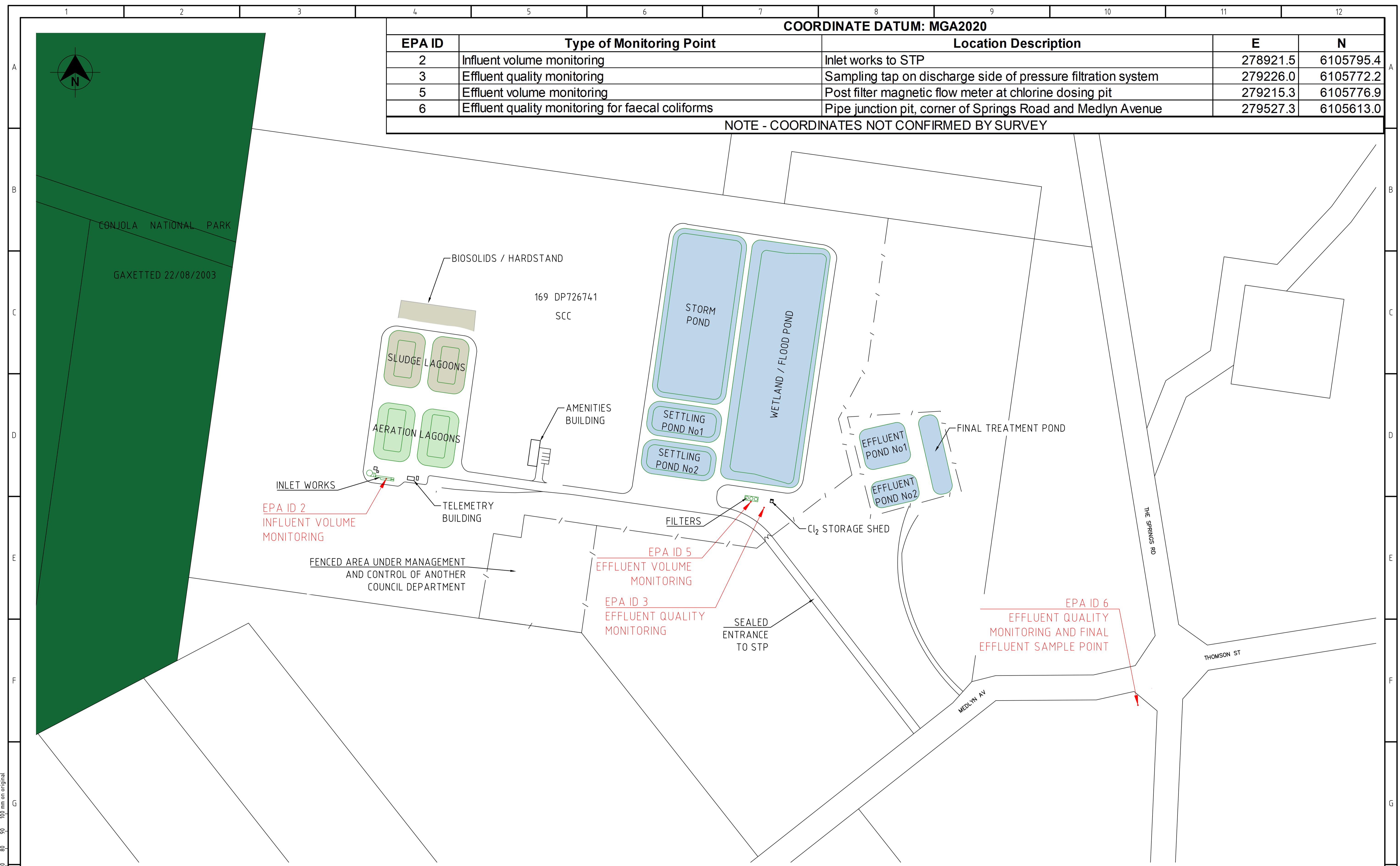


COORDINATE DATUM: MGA2020

EPA ID	Type of Monitoring Point	Location Description	E	N
2	Influent volume monitoring	Inlet works to STP	278921.5	6105795.4
3	Effluent quality monitoring	Sampling tap on discharge side of pressure filtration system	279226.0	6105772.2
5	Effluent volume monitoring	Post filter magnetic flow meter at chlorine dosing pit	279215.3	6105776.9
6	Effluent quality monitoring for faecal coliforms	Pipe junction pit, corner of Springs Road and Medlyn Avenue	279527.3	6105613.0

NOTE - COORDINATES NOT CONFIRMED BY SURVEY



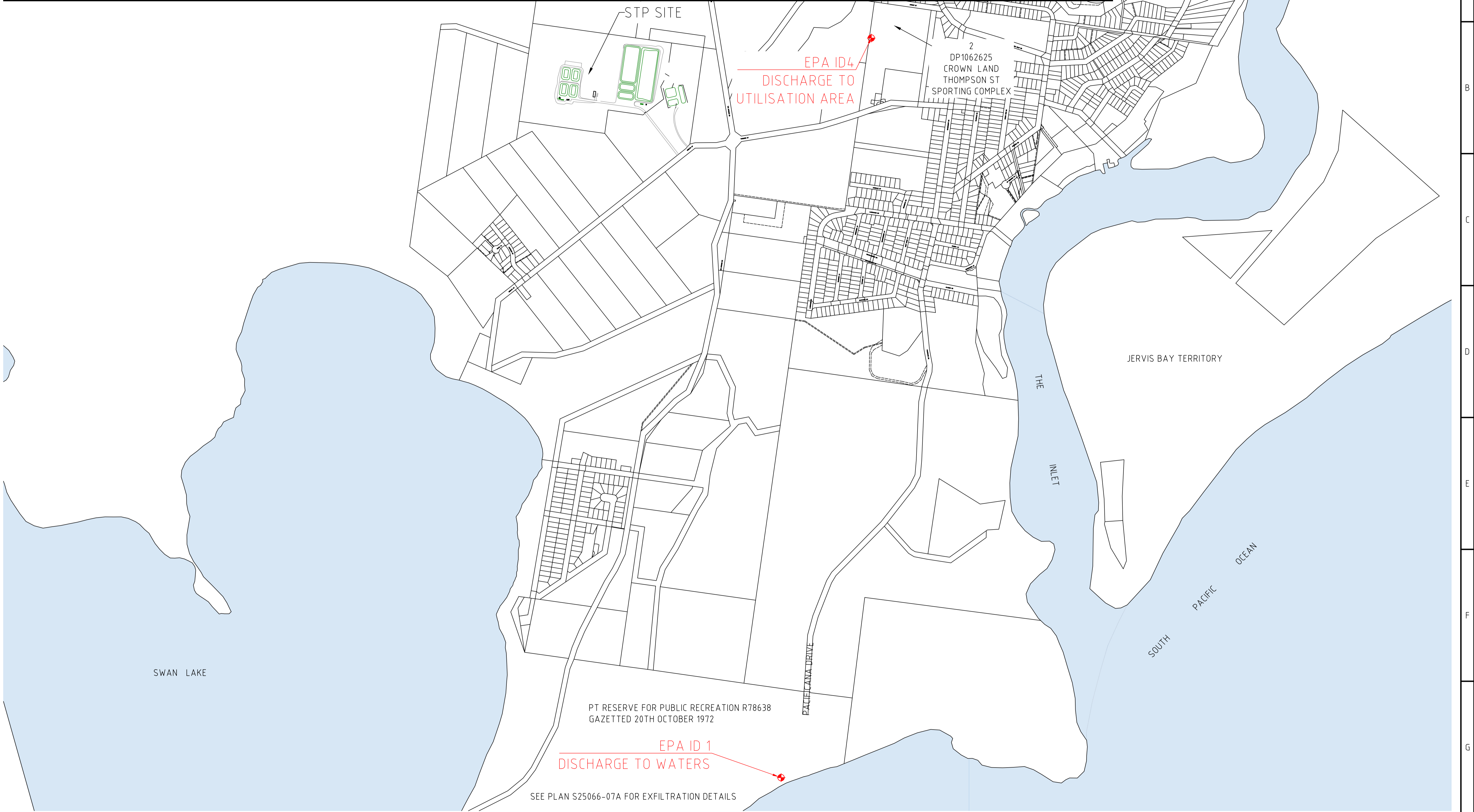
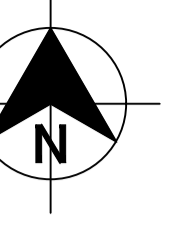
Plotfile: 20/10/23 - 14:31 CAD File: C:\CAD Active\2023-02 STP EPA Plans\Sussex Inlet STP & Exfiltration\STP\DWG\Sussex Inlet STP EPA Monitoring S24162-43.dwg

CONSULTANT DETAILS:		SURVEYED:		DATE:		COMPANY:		TITLE:													
NOT TO SCALE		DESIGNED:		DATE:		COMPANY:		SUSSEX INLET SEWERAGE SCHEME SUSSEX INLET STP EPA MONITORING POINTS PLAN SHOWING EPA ID 2,3,5,6													
		DRAWN:		DATE:		COMPANY:															
SIZE: A1		SCALE FACTOR:		CO-ORDINATE SYSTEM: MGA2020		CHECKED: DP		DATE: 07-23		COMPANY: SCC		CONSULTANT REFERENCE No. 24162		INDEX No. 43		DRAWING No. 43		SHEET A		REV No.	
REVISION DETAILS		DWN		DATE		APPROVED:		DATE:		COMPANY:		DRAWING No. 43		SHEET A		REV No.					

COORDINATE DATUM: MGA2020

EPA ID	Type of Monitoring Point	Description	Location Description	E	N
1	Discharge to waters	Effluent flow monitoring	Outfall pipeline discharging to sand dunes	279734.4	6103291.0
4	Discharge to treated effluent re-use area and volume monitoring	Effluent flow monitoring	Helix flow meter at Thompson Street Sports Fields	280063	6106023

NOTE - COORDINATES NOT CONFIRMED BY SURVEY



No.	REVISION DETAILS	DWN	DATE
1			
2			
3			
4			

CONSULTANT DETAILS:			
NOT TO SCALE			
SIZE: A1	SCALE FACTOR:	CO-ORDINATE SYSTEM: MGA2020	HEIGHT DATUM: AHD

Shoalhaven Council's Water Utility
WATER
 City Administrative Centre
 PO Box 42, Nowra, NSW 2541
 Ph 02 4429 3111
 www.shoalwater.nsw.gov.au

SURVEYED:	DATE:	COMPANY:
DESIGNED:	DATE:	COMPANY:
DRAWN: MA	DATE: 06-2023	COMPANY: SCC
CHECKED: DP	DATE: 25-09-23	COMPANY: SCC
APPROVED:	DATE:	COMPANY:

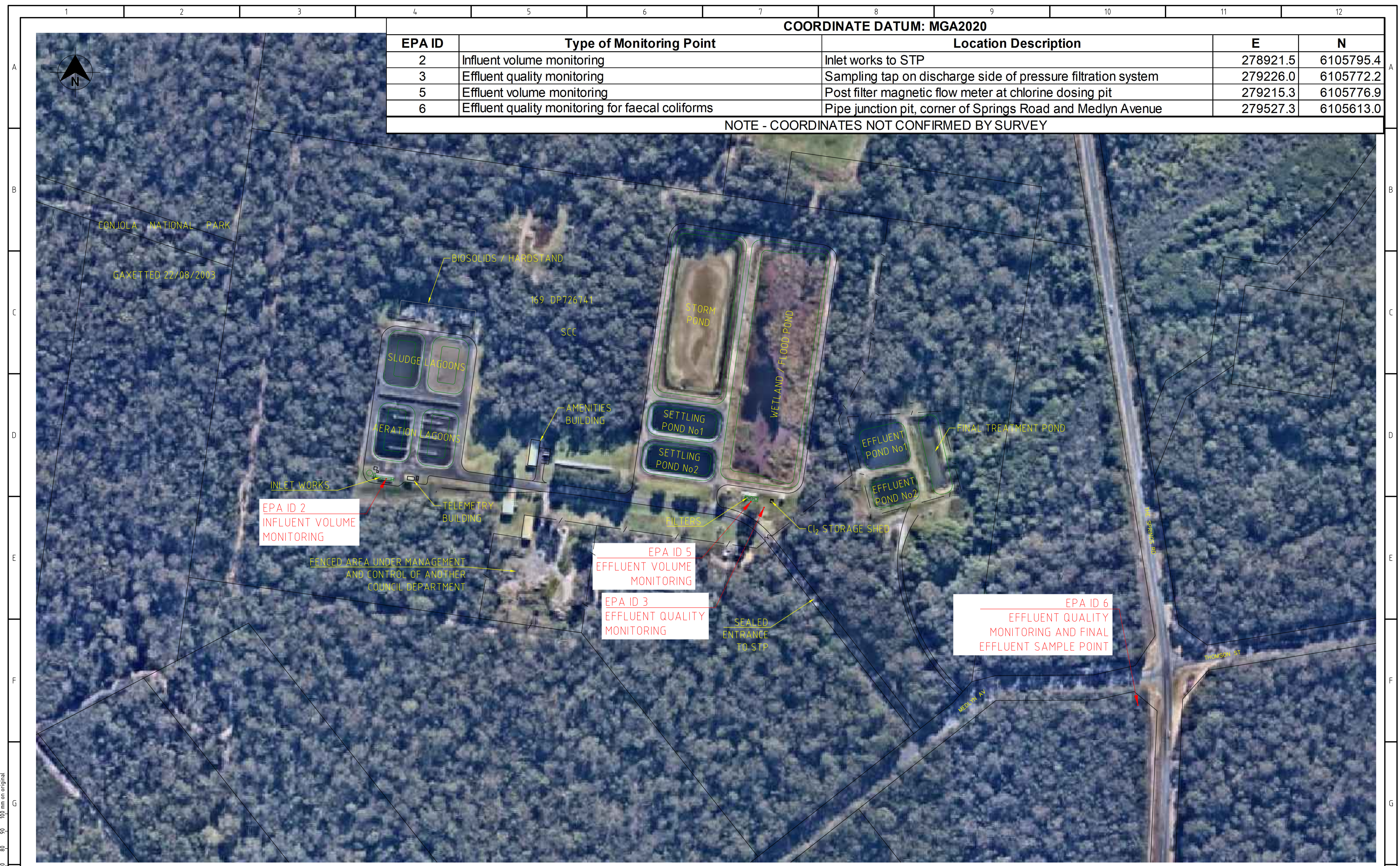
TITLE: SUSSEX INLET SEWERAGE SCHEME SUSSEX INLET STP EPA MONITORING POINTS PLAN SHOWING EPA ID 1 & 4			
CONSULTANT REFERENCE No.	INDEX No.	DRAWING No.	SHEET
	24162	43	B
REV No.			

100 mm on original

COORDINATE DATUM: MGA2020

EPA ID	Type of Monitoring Point	Location Description	E	N
2	Influent volume monitoring	Inlet works to STP	278921.5	6105795.4
3	Effluent quality monitoring	Sampling tap on discharge side of pressure filtration system	279226.0	6105772.2
5	Effluent volume monitoring	Post filter magnetic flow meter at chlorine dosing pit	279215.3	6105776.9
6	Effluent quality monitoring for faecal coliforms	Pipe junction pit, corner of Springs Road and Medlyn Avenue	279527.3	6105613.0

NOTE - COORDINATES NOT CONFIRMED BY SURVEY



100 mm on original

CONSULTANT DETAILS:		SURVEYED:		DATE:	COMPANY:	TITLE:				
NOT TO SCALE		DESIGNED:		DATE:	COMPANY:	SUSSEX INLET SEWERAGE SCHEME				
SIZE: A1		DRAWN:		DATE:	COMPANY:	SUSSEX INLET STP				
SCALE FACTOR:		CHECKED:		DATE:	COMPANY:	EPA MONITORING POINTS				
CO-ORDINATE SYSTEM: MGA2020		APPROVED:		DATE:	COMPANY:	PLAN SHOWING EPA ID 2,3,5,6				
HEIGHT DATUM: AHD		City Administrative Centre PO Box 42, Nowra, NSW 2541 Ph 02 4429 3111 www.shoalwater.nsw.gov.au		DATE:	COMPANY:	CONSULTANT REFERENCE No.	INDEX No.	DRAWING No.	SHEET	REV No.
No.	REVISION DETAILS	DWN	DATE				24162	43	A	

COORDINATE DATUM: MGA2020

EPA ID	Type of Monitoring Point	Description	Location Description	E	N
1	Discharge to waters	Effluent flow monitoring	Outfall pipeline discharging to sand dunes	279734.4	6103291.0
4	Discharge to treated effluent re-use area and volume monitoring	Effluent flow monitoring	Helix flow meter at Thompson Street Sports Fields	280063	6106023

NOTE - COORDINATES NOT CONFIRMED BY SURVEY



PT RESERVE FOR PUBLIC RECREATION R78638
GAZETTED 20TH OCTOBER 1972

EPA ID 1
DISCHARGE TO WATERS

SEE PLAN S25066-07A FOR EXFILTRATION DETAILS

CONSULTANT DETAILS:



City Administrative Centre
PO Box 42, Nowra, NSW 2541
Ph 02 4429 3111
www.shoalwater.nsw.gov.au

SURVEYED:	DATE:	COMPANY:
DESIGNED:	DATE:	COMPANY:
DRAWN:	DATE:	COMPANY:
CHECKED:	DATE:	COMPANY:
APPROVED:	DATE:	COMPANY:

TITLE:
SUSSEX INLET SEWERAGE SCHEME
SUSSEX INLET STP
EPA MONITORING POINTS
PLAN SHOWING EPA ID 1 & 4

No.	REVISION DETAILS	DWN	DATE
1			
2			
3			
4			

SIZE: A1 SCALE FACTOR: CO-ORDINATE SYSTEM: MGA2020
HEIGHT DATUM: AHD

CONSULTANT REFERENCE No.	INDEX No.	DRAWING No.	SHEET	REV No.
	24162	43	B	