



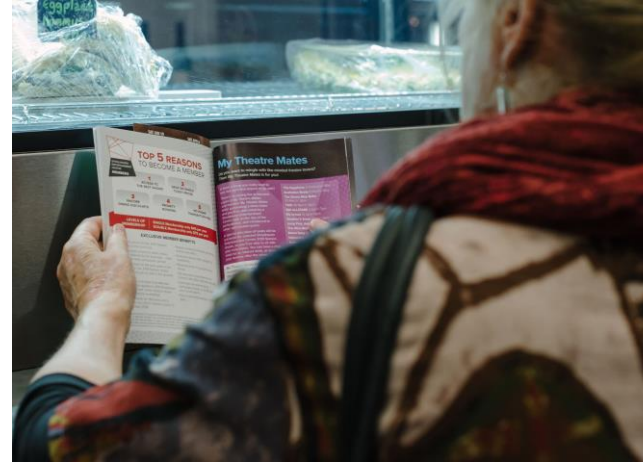
FINANCE, CORPORATE AND COMMUNITY SERVICES

Shoalhaven Entertainment Centre

- Shoalhaven Entertainment Centre will launch its 2020 Season of Performing Arts in December 2019
- The Centre's Education Season and Morning Matinee Season for 2020 will also be launched in December 2019
- In connection with the Seasons it presents, the Entertainment Centre will continue to offer a programme of community engagements including opportunities to meet the stars, post show Q&As, masterclasses and workshops



- Solo theatre goers will continue to be supported by the My Theatre Mates program for people who love to see theatre but don't have someone to attend with
- A new mobile friendly, accessible website to promote the Entertainment Centre will go live in conjunction with the launch of the 2020 Season
- Later this year the Entertainment Centre's Strategic Plan for 2020-2025 will go on public exhibition
- The Strategic Plan will also inform a sponsorship policy to support the Centre's programming of professional theatre and community engagement



Shoalhaven Regional Gallery

- Continuing to progress the Heating, Ventilating & Air Conditioning System upgrade – the Gallery will be closed for 12 weeks from late March 2020 to June 2020 for this work to take place
- 2019/20 program is now finalised
 - Staff are curating a major summer show “Altered State” with Tamara Dean and Nicole Welch
 - Tamara has just won the Moran Photographic prize and also won the Meroogal Women’s Art Prize



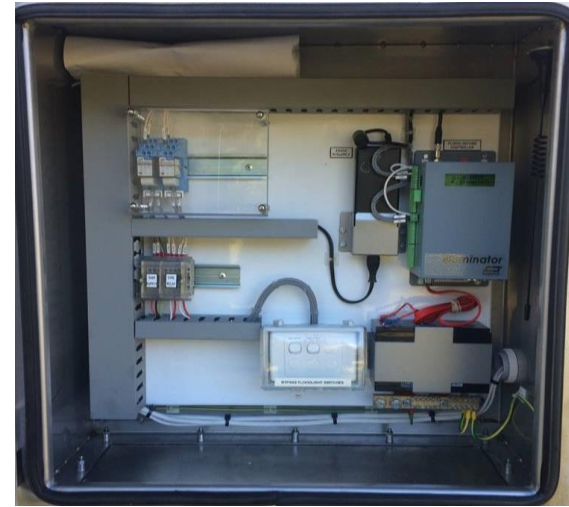
- New Horizons HSC Art exhibition in 2020 will include HSC Design as well as textile, industrial and technological
- NOW Contemporary Art Exhibition is being managed and run by SRG for the first time. \$10,000 first prize is on offer, entries close in August, exhibition in October
- Promiscuous Provenance exhibition continues to tour. In 2019/20 it will travel to Moruya, Canberra, Swan Hill, Hahndorf and Port Pirie

Community & Recreation

- The Shoalhaven Walking on Country Video Promotion is an exciting new project that aims to capture the Spirit of Country through the eyes of Aboriginal community members of the Shoalhaven
- Drainage and/or irrigation at 6 locations – Sanctuary Point Oval, Nowra Showground Added Area, Ulladulla Sporting Complex, Bernie Regan Sporting Complex, Bomaderry Sporting Complex, Ray Abood Oval



- Stage 3 illuminators. Completion will see all floodlit fields, including Management Committee sites, to have 'Illuminator' controllers installed
- Tennis Court resurfacing and fencing will occur at Lake Conjola, Currarong, Wandandian, Berry Sporting Complex, Kioloa, Shoalhaven Heads, Callala Bay, Huskisson, Manyana & Sussex Inlet with completion due at the end of October 2019 for hard courts and June 2020 for grass courts



Stock Image

- BBQ and shelter installations will take place at the following locations with completion of all units by October 2020:

- Cunjurong Point Reserve
- Huskisson Beach Reserve
- Dolphin Reserve (Currarong)
- Greys Beach (Nowra)
- Lions Park (Burrill Lake)

- Installation of covered grandstand seating at the following locations with completion of all units by December 2019:

- Callala Sportsground
- Finkernagel Oval (Sussex Inlet)
- Lyrebird Park (Nowra)
- Vic Zealand Oval (Shoalhaven Heads)

Double Bench



BBQ Sample



Delivery of Boongaree (Berry)

- Berry Rotary have secured a \$4 million grant from the State Government towards the development of the park and playground
- Council have secured 'Everyone Can Play' State Government Grant of \$200,000 for delivery of an Accessible Flying Fox & Building Better Regions Federal funding of \$456,000 for the delivery of Stage 1 – Nature Play
- Council are contributing toward these two grants and this funding has been identified and allocated
- Council are finalising the detail design of an integrated skate park and pump track with consultants as identified on Boongaree Masterplan

Boongaree Park Masterplan



- **Marriott Park Detail Design**
Master planning in process to identify for the growth of the park considering RMS road restrictions and greater accessibility
- **Community Centre Air-Conditioner Installation**
Air-conditioning will be installed at the following centres
 - Bomaderry (end of October 2019)
 - Callala Bay (end of July 2019)
 - Callala Beach (end of July 2019)
 - Culburra Beach (end of July 2019)
 - Thompson Street (Sussex Inlet) (October 2019)
- **Progressing Ulladulla Skate Park – Detail Design**



Delivery of Ulladulla Croquet Courts

- Development of 2 lawns and amenities buildings in line with detail design

Nowra Showground

- Restart NSW Grant Funding & Council Co-contribution
Project Total of \$1,225,473
- Upgrades to amenities block including seating, fire and water services, external painting of buildings, cattle yard fencing, seating replacement, stable upgrades, cattle washdown area upgrades, cattle ramp improvements and upgrade of the judges box



Shoalhaven Swim, Sport & Fitness

- A new website for the Shoalhaven Swim | Sport | Fitness unit is being developed
- The website will offer digital services in line with changing needs/expectations of our patrons via third-party software integration and the introduction of a functional Members Portal for enabling online payments and updates to personal information
- The Ulladulla Leisure Centre gym is currently undergoing works in order to extend the opening hours and improve accessibility in line with industry trends and consumer expectations (estimated September 2019)



Shoalhaven Indoor Sports Centre



- Estimated opening for operation is September this year
- Multi-use facility providing value to school students, sporting groups and the local community with a range of indoor sports:
 - Basketball
 - Badminton
 - Netball
 - Tennis
 - Table Tennis
 - Martial Arts



Sussex Inlet Aquatic Centre Critical Works

- Undergoing critical maintenance works that involves replacing the existing pool liner
- Works scheduled from Friday 17 May to Sunday 2 June 2019 with the pool reopening on Monday 3 June 2019



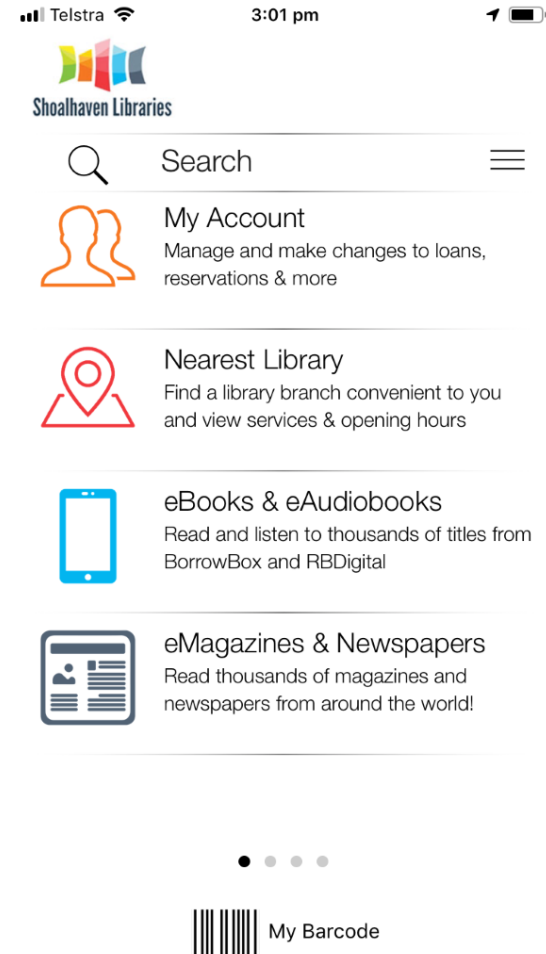
Sea Pool Update

- The Huskisson Sea Pool is trialling the continuation of swimming throughout the winter months in response to patron feedback



Shoalhaven Libraries

- Continue working through actions from the Shoalhaven Libraries Strategic Plan 2017-2021
- Progress the building of the new Bay & Basin District Library in Sanctuary Point
- Launch Shoalhaven Libraries Smartphone App



- A review of Shoalhaven Libraries Indigenous Collection is being conducted to ensure it is up-to-date, vibrant and appropriate
- Mini refurbishment of Nowra Library Children's area to replace aging and outdated furniture; reorganise collection to incorporate proposed spaces and new collections, with particular attention to children and young people who experience cognitive and sensory overwhelm or those with Autism Spectrum Disorder



- A new mobile library van has been launched to include home library deliveries, outreach activities and promotional events
- Shoalhaven Libraries are looking to become eSmart accredited. eSmart is a free purpose-built system designed to equip libraries and connect library users with the skills they need for smart, safe and responsible use of technology
- eSmart Libraries is a partnership between the Alannah & Madeline Foundation and the Telstra Foundation, and it is one of the most significant community cyber safety initiatives ever undertaken in Australia



eSmart
Libraries

Shoalhaven Tourism

- Promotion of tourism happens solely to stimulate visitation in the off-season. In summer, Shoalhaven Tourism disperse people around the region and upsell experiences
- The overall estimated economic impact of tourism in the Shoalhaven is \$869M per year.



-
- A wooden picnic table is set up on a grassy hill, overlooking a vineyard and a stone building. The table is laden with a variety of items: a bottle of wine, a glass of red wine, a loaf of bread, a plate of cheese, a plate of bread, a plate of fruit, and a vase of flowers. The background features a stone building, a vineyard, and a line of tall cypress trees under a clear blue sky.

