

CCB Executive Meeting

Tuesday, 14 May 2019

Planning, Environment & Development

LOCAL STRATEGIC PLANNING STATEMENT

Local Strategic Planning Statement

- Strategic document setting out the community's needs over the next 20 years, and Councils response,
 - Housing supply, diversity and affordability
 - Employment and economic growth
 - Environmental protection
 - Preserving the character of towns, villages, and neighbourhoods
 - Infrastructure and service provision
- Statutory requirement to have in place by July 2020

Local Strategic Planning Statement

- Next Steps
 - Councillor/community workshops
 - Release DoP scope document for public comment
 - Formulation of draft document
 - Community comment
- We will use the Statement to:
 - Direct future changes to planning and development controls
 - Inform future reviews of development contributions
 - Advocate with the State Government
 - link with Council's Integrated Reporting & Planning Framework

Growth Management Strategy

- Detailed strategic document about:
 - Accommodating a growing population
 - Maintaining and protecting social, economic and environmental values
- Adopted in 2012 and endorsed 2014, but now needs an update:
 - Contemporary population information
 - Completion of earlier actions
 - Updated legislation
 - Other new information

Engagement Report published in June 2019

Further community consultation later this year

Character Assessments

- Commissioned by Department of Planning & Environment
- Attempts to identify existing and potential future character:
 - Natural environment and landscape
 - Built form and land use
 - Access and connectivity
 - Services and amenity
 - Activity and community
- May inform future planning work on maintaining and improving existing character

Proposed Tourist and Visitor Accommodation Review

Definition

- ‘Tourist and visitor accommodation’ (group term) is defined in the LEP as:
 - a building or place that provides temporary or short-term accommodation on a commercial basis, and includes any of the following:*
 - (a) *backpackers’ accommodation,*
 - (b) *bed and breakfast accommodation,*
 - (c) *farm stay accommodation,*
 - (d) *hotel or motel accommodation,*
 - (e) *serviced apartments,*
 - but does not include:*
 - (f) *camping grounds, or*
 - (g) *caravan parks, or*
 - (h) *eco-tourist facilities.*

Background

- Shoalhaven LEP 2014 (the LEP) contains a range of provisions related to ‘tourist and visitor accommodation’.
 - These provisions are supported by provisions in Shoalhaven DCP 2014 (the DCP).
- This term is not exclusive. Other tourism related land uses (‘innominate uses’) not listed may also be considered in zones where ‘tourist and visitor accommodation’ is permissible with consent.

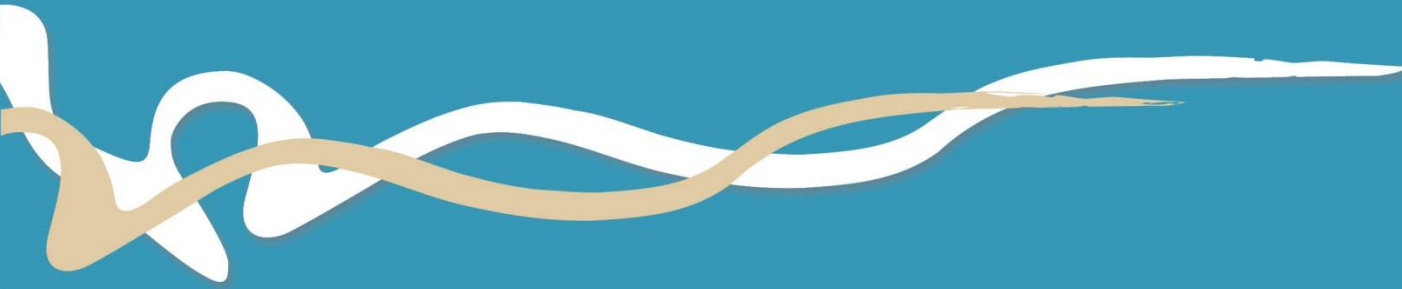


Examples of ‘innominate uses’

Consultation

- As part of the review of the LEP and DCP, formal consultation will be undertaken in due course with:
 - CCBs/Community Groups.
 - Development Industry.
 - Tourism Industry (e.g. Business Chambers, Chambers of Commerce, STAG and Destination Sydney Surrounds South).

Proposed SLEP 2014 Clause 2.8 Review



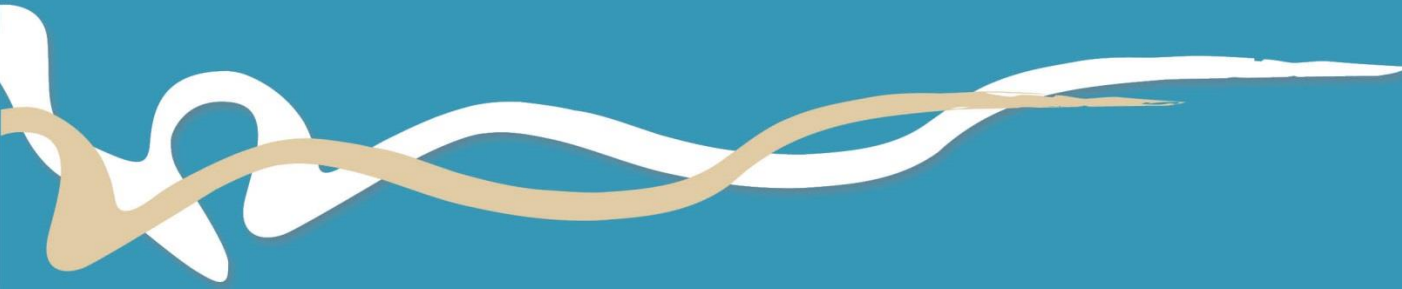
Background

- Clause 2.8 allows development consent to be granted for any development in any zone for a maximum period of 52 days in any 12-month period.
- Under this Clause, consent may be granted regardless of land use permissibility and any other land use restrictions within the LEP.
 - For example, a function centre may be able to obtain consent in the RU1 or RU2 zones under Clause 2.8 even though it is not expressly permissible via the relevant land use table.

Issues and Next Steps

- Council resolved on 7 May 2019 to:
 - Review the operation and effect of the current Clause 2.8.
 - Receive a further report outlining the findings of the Review and options to revise the clause as appropriate.
- Staff will be in contact with CCBs/others during the Review to obtain feedback.

DAs



- This year end April
- Approved 404 (402)
\$160M (\$95M)
- Lodged 410 (452)
\$142M (\$124M)



Proposed Photomontage SE Elevation shot from Cnr Burrill St South & Wason Street

Environmental Services

- Coastal Management
 - 2018 Shoalhaven Coastal Zone Management Plan for the Open Coast was certified by Minister
 - Preparation of the new Coastal Management Program for Open Coast and St Georges Basin commenced
 - Successful grant obtained for Shoalhaven River CMP
 - Grant Application submitted for Lake Conjola CMP
 - Design works commenced for River Rd & Bolong Rd foreshore restoration projects

Environmental Services

- **Flood Management**

- Flood Levee repairs completed
- St Georges Basin & Lower Shoalhaven River commenced
- Review of Lake Tabourie Entrance Management Policy nearing completion.



Biodiversity

- Successful grant to manage Grey Headed Flying Fox (GHFF) colony



- Project Nominated for LG NSW excellence in environmental award
- Update of Council's systems, processes, procedure and website in new Biodiversity Conservation Act.
- Training of Council officers and planning consultants.

- **Weed Biosecurity**

- Successful grants to manage new and emerging weeds
- Record number of regulatory inspections and weed management sited due to increased efficiencies.

- **Onsite Sewage Management**

- More than 1500 systems assessed and rectification works completed where required

- **Bushfire Mitigation**

- Successful grant obtained and upgrade of Wattle Tree fire Trail completed

Environmental Services

- **Food Safety**

- Scores on Doors food safety program continues to be successfully implemented with retail food businesses improving their food safety to score “excellent” 5 stars.





Water Quality

- Online public water quality database – first in the State – Aquadata
- Includes live streaming of water quality data from Shoalhaven River
- Successful compliance action and rehabilitation of site to protect water quality in Crookhaven River which in turn protects our valuable Oyster Farming

- Shoalhaven Environmental Expo



An exciting day of entertainment, involvement and discovery

ReIMAGINE A Sustainable Future! This day promises to inspire and ignite your passion for taking positive action towards sustainability in your home, neighbourhood and beyond.

Exhibitors will be representing local initiatives, community partnerships and Council programs in areas such as Waste Minimisation, Recycling & Upcycling, Wildlife & Environmental Protection, and Bush, Coast & Waterways Management.

There will be opportunities for you to test your skill and knowledge with the experts through a range of interactive displays, workshops, demonstrations and discussions. Plus, surprises and fun all day with our roving entertainers!

This is a free, family-friendly event so save the date.

Wednesday 5 June 2019 (World Environment Day), Shoalhaven Entertainment Centre, from 9.30am to 4pm.

