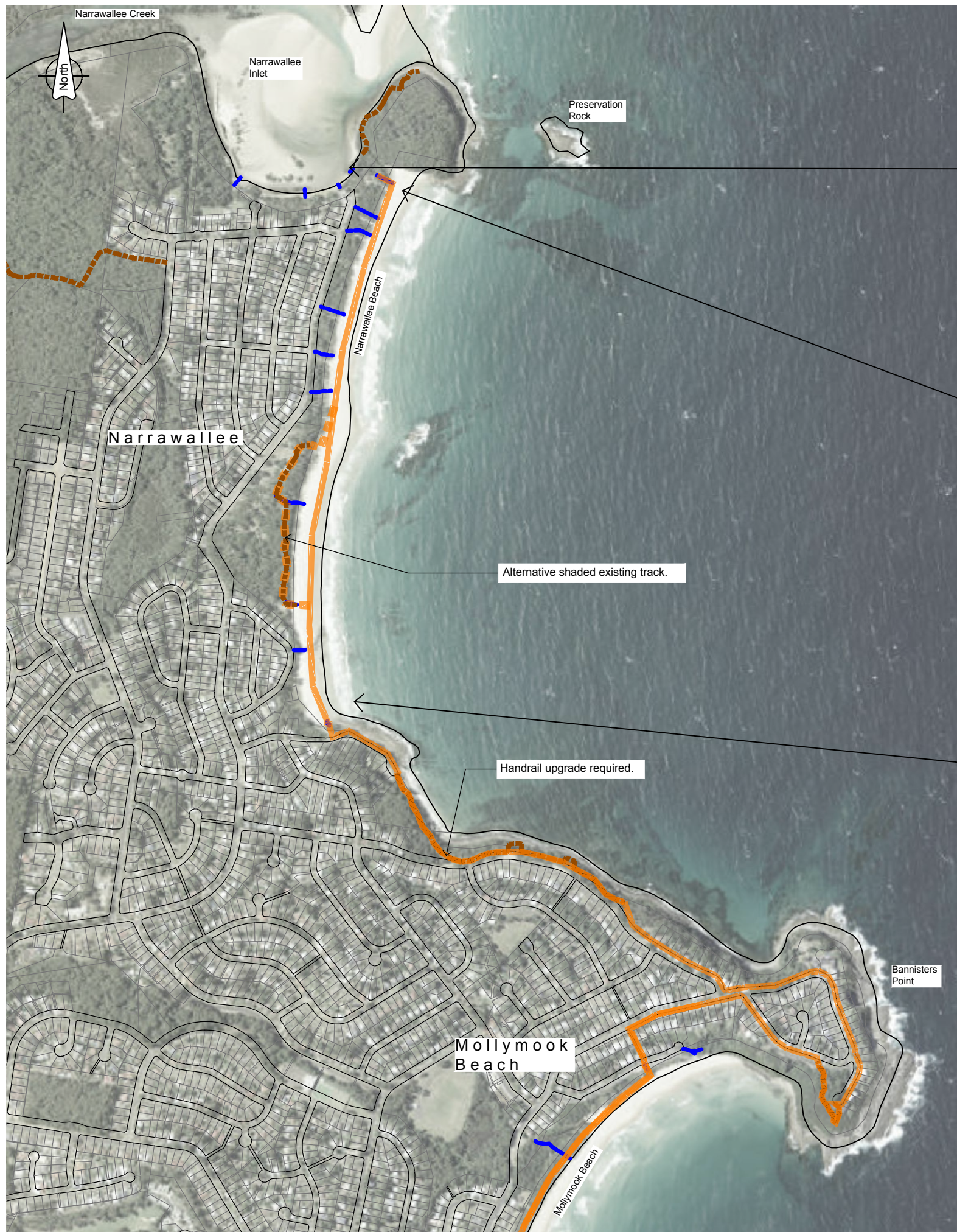
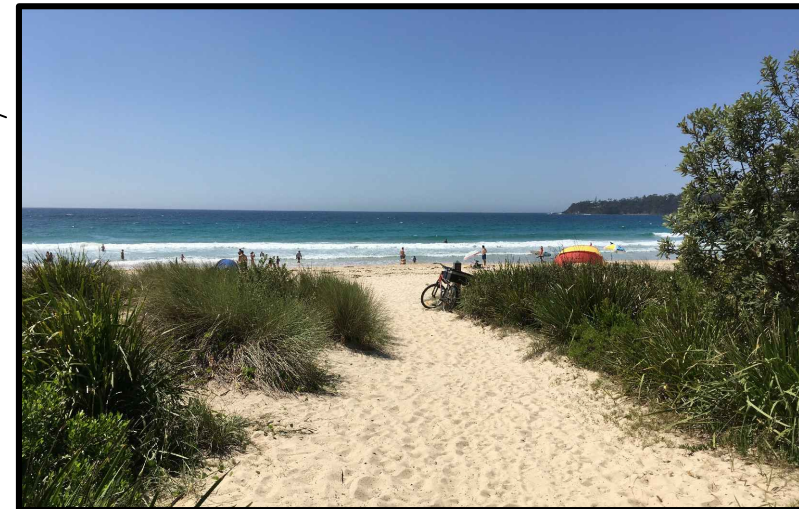


Legend

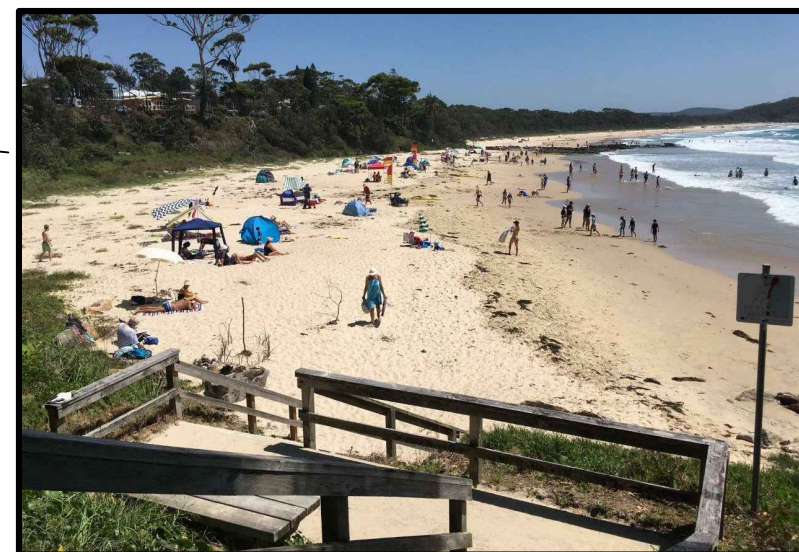
- Main walking route - Various pathway treatments (concrete, gravel, boardwalk & along beaches etc.) Include wayfinding bollards to delineate route where required.
- Walking route - managed by National Parks & Wildlife Service (NPWS)



The walk begins at Narrawallee Inlet.



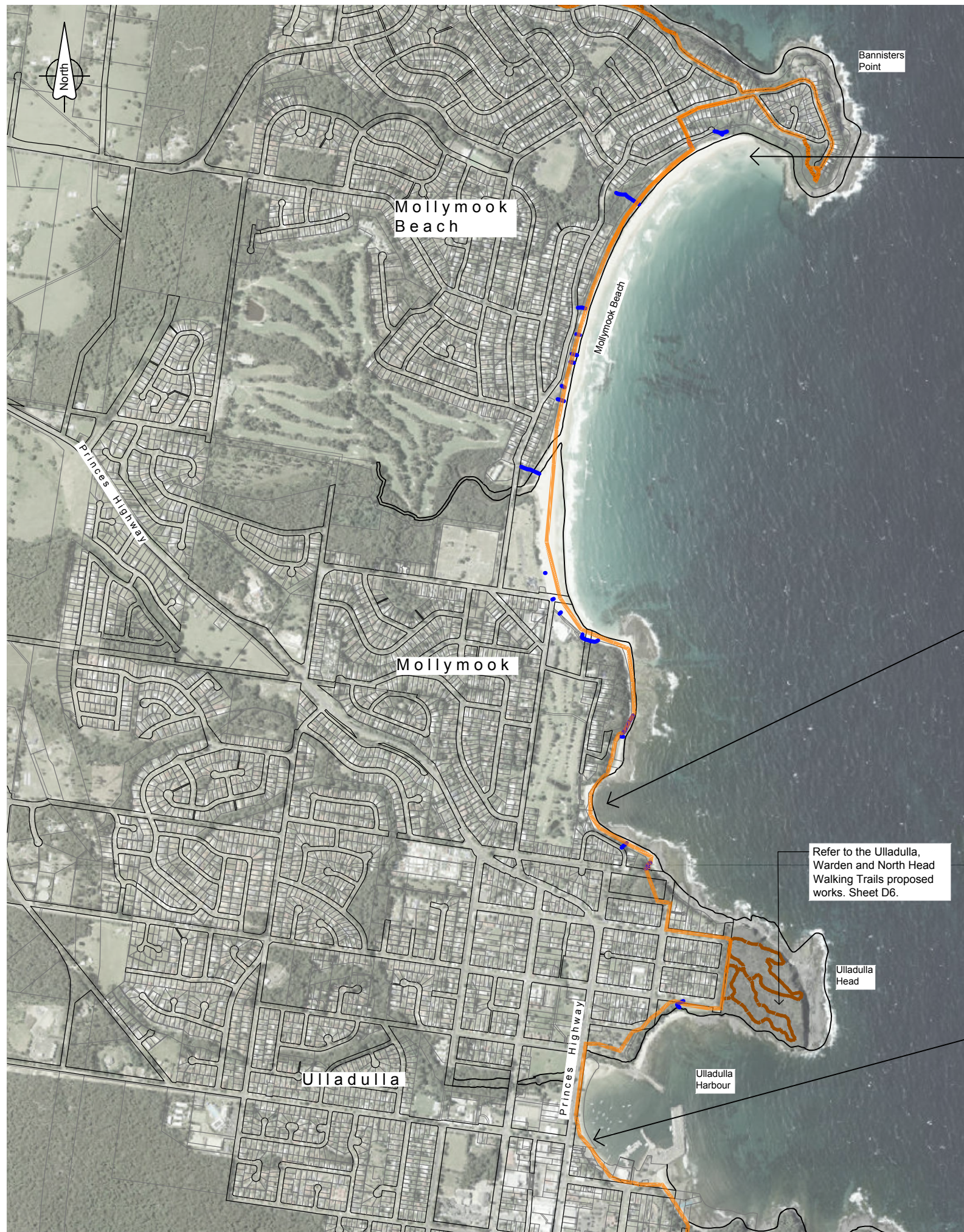
Narrawallee Beach northern track head.



Narrawallee Beach looking north.

Legend

- Main walking route - Various pathway treatments (concrete, gravel, boardwalk & along beaches etc.) Include wayfinding bollards to delineate route where required.
- - - Alternate walking route - various pathway treatments
- Existing beach access tracks
- - - Existing walking tracks
- Walking route - managed by National Parks & Wildlife Service (NPWS)



Mollymook Beach looking south.



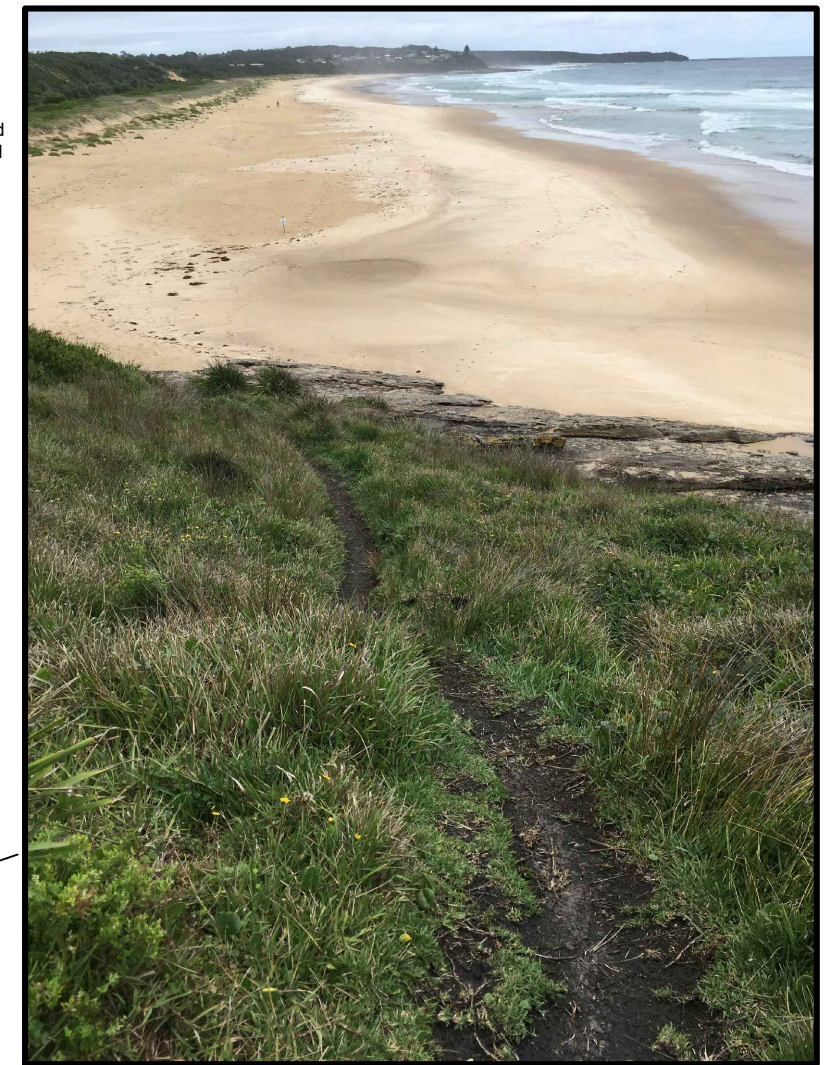
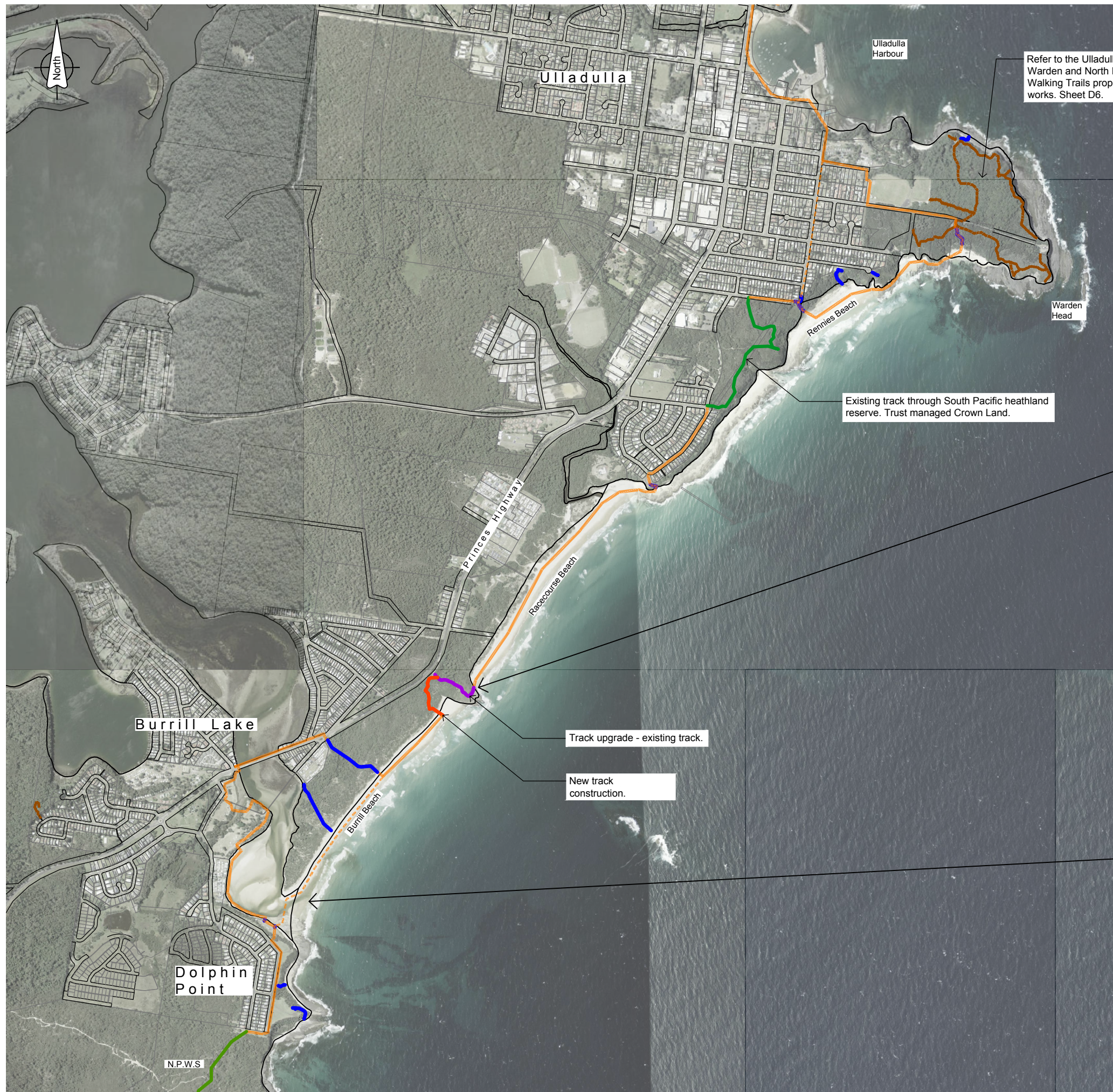
Collers Beach looking south.



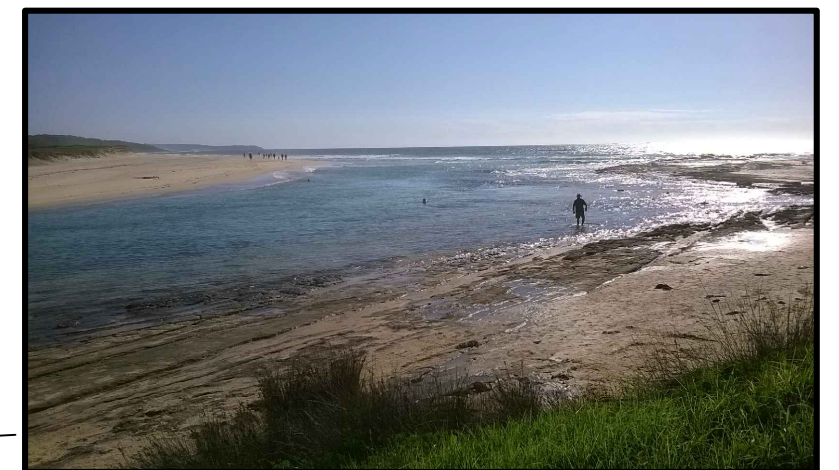
Ulladulla Harbour looking North.

Legend

- Main walking route - Various pathway treatments (concrete, gravel, boardwalk & along beaches etc.) Include wayfinding bollards to delineate route where required.
- - - - - Alternate walking route - various pathway treatments
- Existing beach access tracks
- Existing walking tracks



Racecourse Beach from Blackburn Head. Photo shows existing track to be upgraded.



Burrill Lake entrance, looking towards ocean. Lake entrance is dangerous when open. Main track detours to highway.

Legend

- Main walking route - Various pathway treatments (concrete, gravel, boardwalk & along beaches etc.) Include wayfinding bollards to delineate route where required.
- - - Alternate walking route - only when lake entrance is closed
- Existing beach access tracks
- Track upgrade - 270m
- Existing walking tracks
- Walking route - managed by Trust on Crown Land
- Beach access upgrade - new works in timber and fibre reinforced plastic - 285m



Wairo Beach looking south to Crampton Island



Tabourie Lake entrance, looking towards Crampton Island. Lake entrance can be dangerous when open. Main track detours to highway.



Beach access onto Tabourie Beach

Legend

- Main walking route - Various pathway treatments (concrete, gravel, boardwalk & along beaches etc.) Include wayfinding bollards to delineate route where required.
- - - - - Alternate walking route when lake entrance is closed
- Existing beach access tracks
- Existing walking tracks
- Walking route - managed by National Parks & Wildlife Service (NPWS)



Bawley Beach Looking North



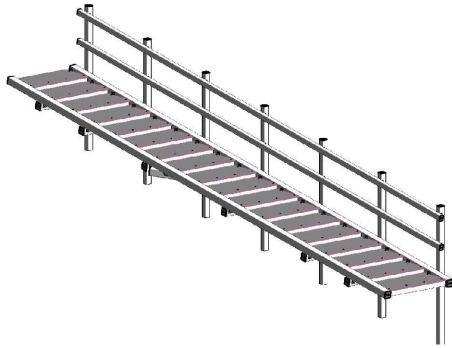
Cormorant Beach Looking South



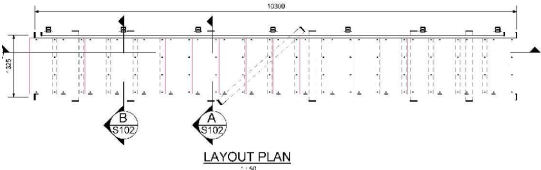
Gannet Beach Looking North

Legend

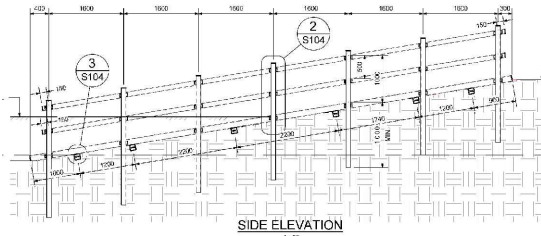
- Main walking route - Various pathway treatments (concrete, gravel, boardwalk & along beaches etc.) Include wayfinding bollards to delineate route where required.
- Alternate walking route - various pathway treatments
- Existing beach access tracks
- Existing walking tracks
- Walking route - managed by National Parks & Wildlife Service (NPWS)
- Beach access upgrade - new works in Fibre reinforced plastic - 567m



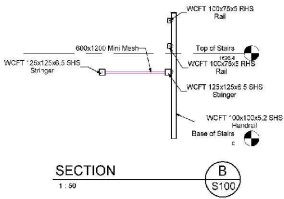
ISOMETRIC VIEW



LAYOUT PLAN

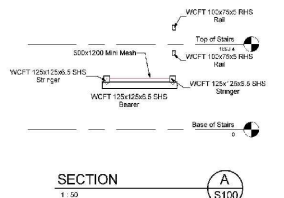


SIDE ELEVATION



SECTION

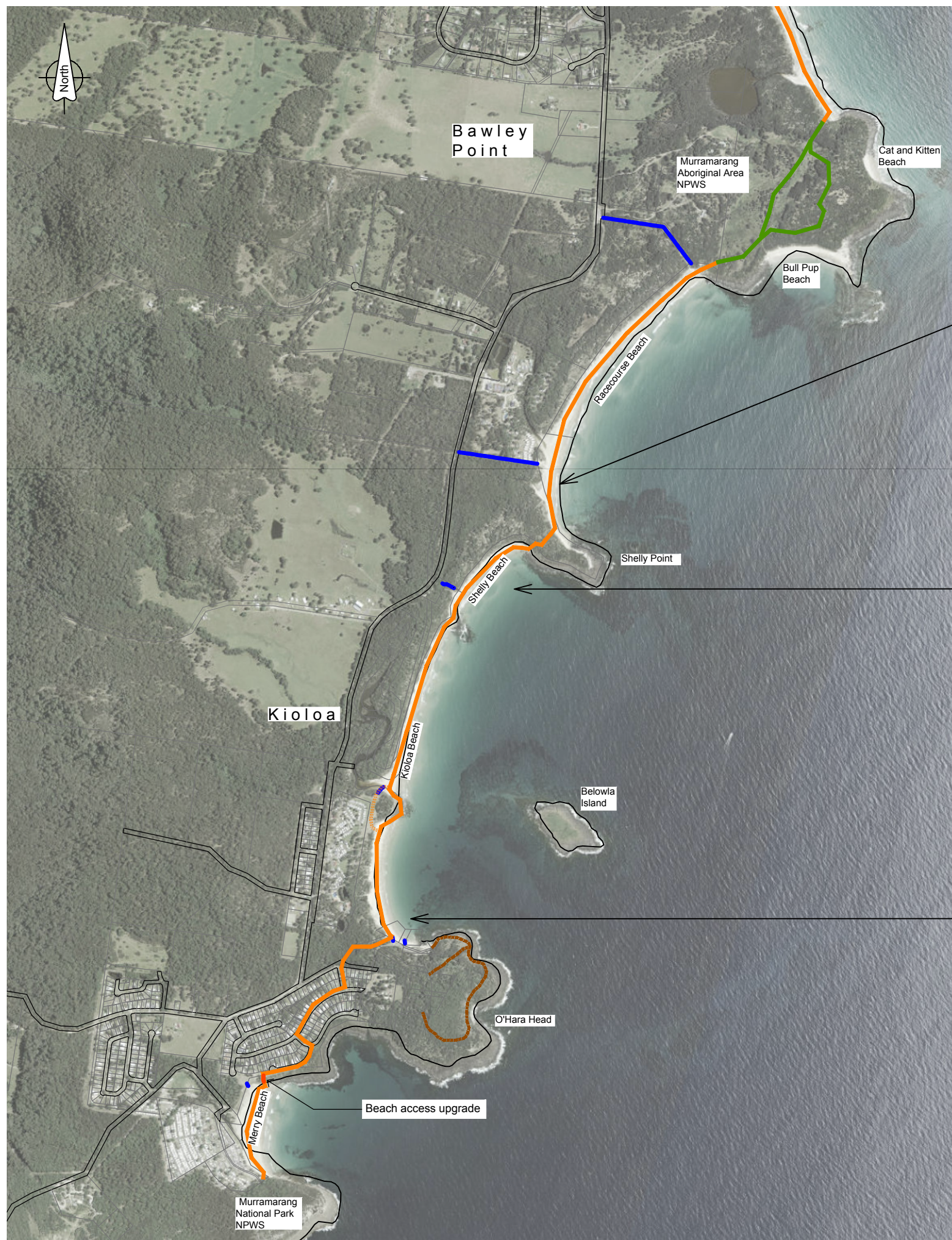
1:50



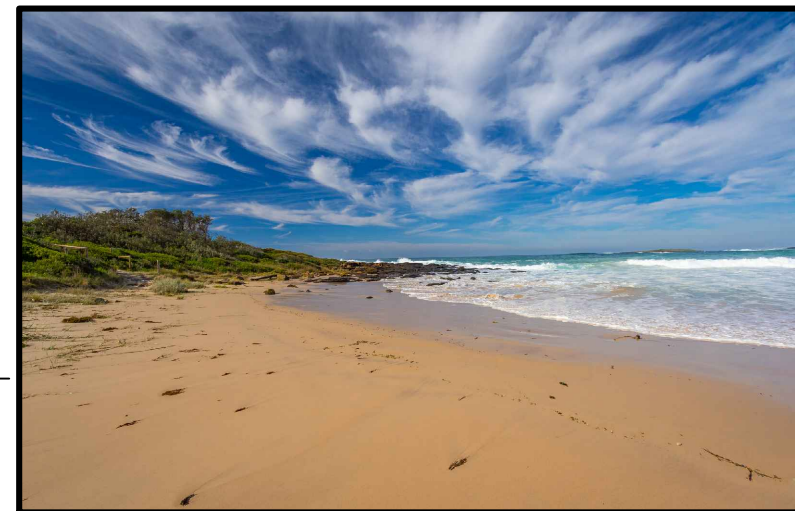
SECTION

1:50

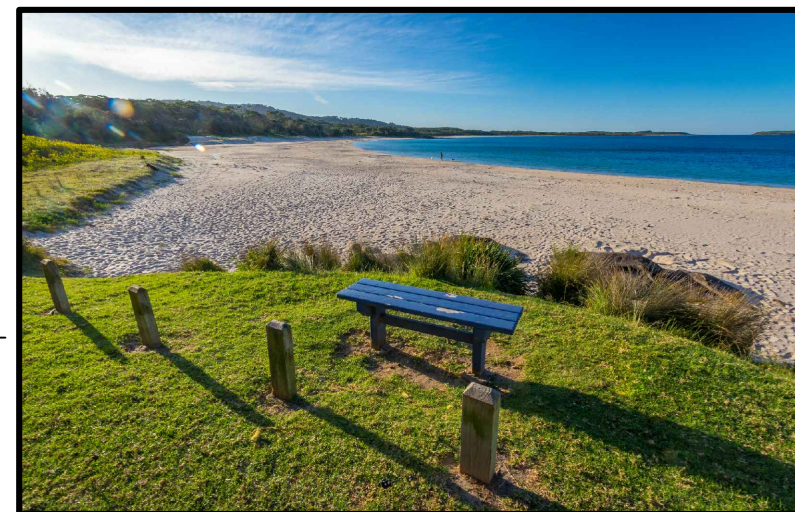
Typical fibre reinforced plastic beach access details used elsewhere in the Shoalhaven. Not to Scale.



Racecourse beach looking north.



Shelly Beach Looking North



Kioloa Beach Looking North

Legend

- Main walking route - Various pathway treatments (concrete, gravel, boardwalk & along beaches etc.) Include wayfinding bollards to delineate route where required.
- - - Alternate walking route - various pathway treatments
- Existing beach access tracks
- Existing walking tracks
- Walking route - managed by National Parks & Wildlife Service (NPWS)
- Beach access upgrade - new works in fibre reinforced plastic - 28m