



Legend

- Gravel path - 3293m
up to 1.2m wide gravel path to be constructed - 150mm deep compacted road base with recycled composite edging where required.
- Existing boardwalk / Bridges / Structures - 280m
To remain in situ and maintained as required
- Proposed boardwalk - 2035m
Installation of new and replacement of 1.2m wide boardwalk constructed using recycled composite products. Refer to details on sheet E4.
- Proposed accessible concrete pathway 2145m
Construct 2.0-2.5m wide sandstone coloured concrete shared path
To link the Basin Walk to the existing Bay to Basin shared path to Jervis Bay.
Refer to details of sheet E3.



Proposed boardwalk - Recycled composite product



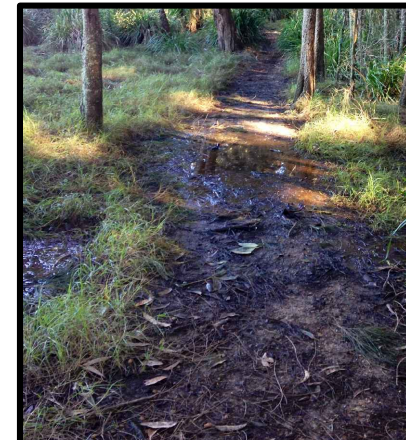
Proposed shared path - sandstone coloured concrete



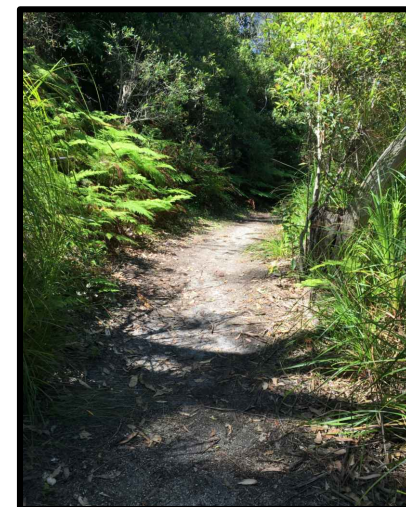
Proposed boardwalk - Fiberglass/recycled plastic



Proposed gravel track to cover exposed tree roots



Proposed boardwalk in low lying wet areas



Existing gravel path to be resurfaced



Proposed boardwalk around rocks