

Shoalhaven 2040

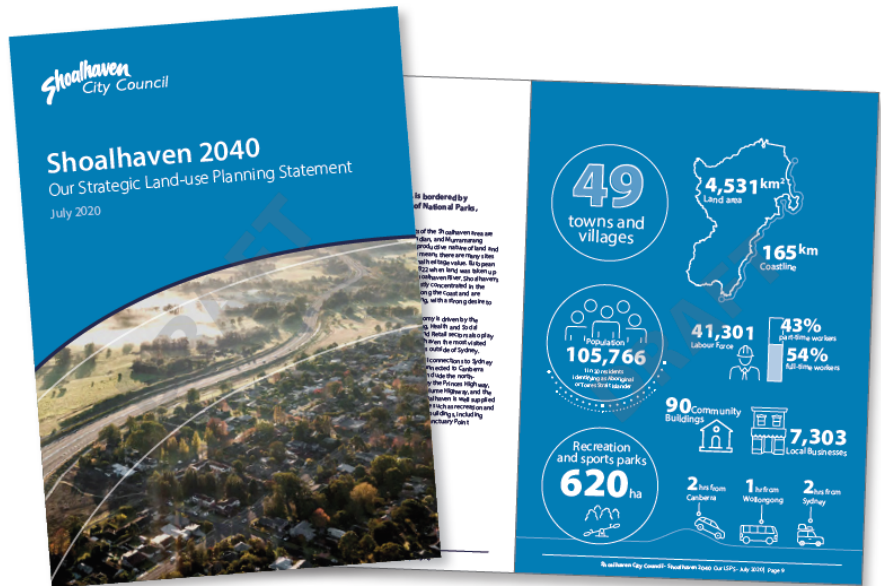
Our Strategic Land-use Planning Statement

About the document and how to provide feedback



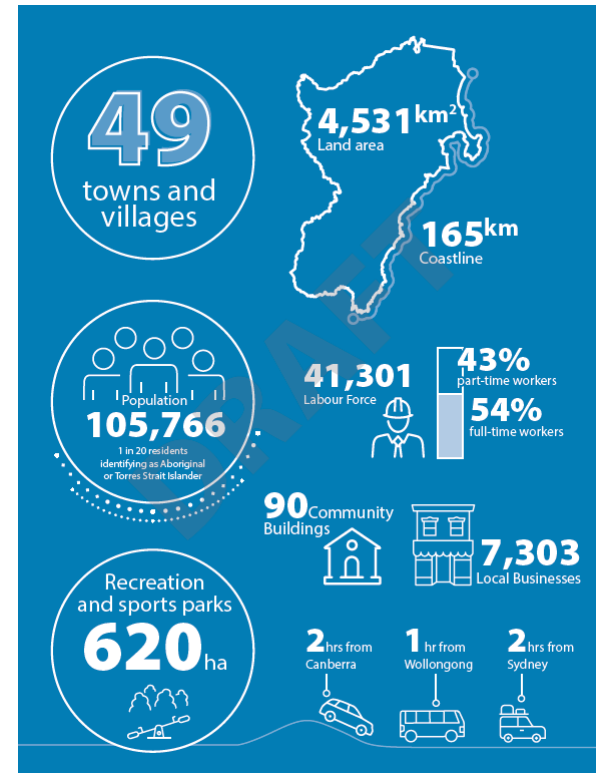
Introduction – Local Strategic Planning Statements

- Guides strategic land use decisions
- Identifies land-use planning and related work
- Anticipates change, opportunities and challenges
- Set *Planning Priorities and Actions*
 - *Number, type & location of new homes*
 - *Infrastructure & services*
 - *Jobs & economic growth*
 - *Protecting & adapting to the environment*
 - *Enhancing heritage, landscape & neighbourhoods*



Shoalhaven 2040

- Opportunities and challenges
- Managing change
- Future trends
- City-shaping precincts and infrastructure
- **Vision**
- **Planning Priorities**
- **Actions**
- Directs changes to planning and development controls
- Fills the information “Gaps”



Shoalhaven 2040

- 5 Themes
- 16 Planning Priorities
- 37 Actions with timeframes
- Policy Statements
- Current work
- Collaboration Activity



Managing growth



Great places



Growing the economy



Protecting & adapting to the environment



Celebrating culture & heritage



Shoalhaven 2040

- 5 Themes
- 16 Planning Priorities
- 37 Actions with timeframes
- Policy Statements
- Current work
- Collaboration Activity



Managing growth

- Planning Priority 1 - Providing homes to meet needs & lifestyles
- Planning Priority 2 - Delivering infrastructure



Great places

- Planning Priority 3 - Protecting & enhancing neighbourhoods
- Planning Priority 4 - Nowra City Centre
- Planning Priority 5 - Ulladulla Town Centre



Growing the economy

- Planning Priority 6 - Providing jobs close to home
- Planning Priority 7 - Strengthening commercial centres
- Planning Priority 8 - Promoting a responsible visitor economy
- Planning Priority 9 - Supporting agriculture & aquaculture
- Planning Priority 10 - Industrial & defence-related opportunities



Protecting & adapting to the environment

- Planning Priority 11 - Protecting the environment
- Planning Priority 12 - Adapting to natural hazards through building resilience
- Planning Priority 13 - Managing resources



Celebrating culture & heritage

- Planning Priority 14 - Heritage items & places
- Planning Priority 15 - Scenic & cultural landscapes
- Planning Priority 16 - Promoting events & public art



Implementation, Monitoring & Reporting, Partnerships

- Studies & Strategies – Evidence base – Informed decisions
- Planning Documents
 - Local Environmental Plan 2014
 - Development Control Plan 2014
 - Development Contributions Plan 2019
- Integrated Planning & Reporting Framework
- Monitoring & Review
 - Measures
 - Annual Report & End of Term Report
 - 2022 Review
- Partnerships
 - Community Consultative Bodies
 - Local Aboriginal Land Councils
 - Illawarra-Shoalhaven Joint Organisation
 - Neighbouring Councils
 - Various NSW Government Agencies

INTEGRATED PLANNING AND REPORTING FRAMEWORK

A suite of integrated plans setting a vision and goals for a wide range of community issues, and the strategic actions to achieve them. It involves reporting to communicate progress and a structured timeline for review to ensure plans remain relevant.



Community Strategic Plan

Describing the communities' vision and aspirations for a period of ten or more years.



Delivery Plan

A four-year plan, aligning with Council's four-year term, turning the strategic goals set in the Community Strategic Plan into actions and committing Council to act.



Operational Plan

A one-year plan setting out the detail of the Delivery Plan, identifying the individual projects and activities to be undertaken in a specific financial year.




Community Participation


- Informed by feedback on:
 - Community Strategic Plan
 - Growth Management Strategy
 - Character Assessment Report
 - Rezoning/Development Proposal
 - LSPS Survey
- Get Involved
 - Public Exhibition: 1-31 July 2020
 - Fact Sheets
 - Recorded presentations
 - Frequently asked questions





Further Information

We've provided several ways for you ask us questions or seek further information about *Shoalhaven 2040*.

 phone 02 4429 5884

 email council@shoalhaven.nsw.gov.au

 www.getinvolved.shoalhaven.nsw.gov.au/LSPS

 In-person or digital meeting



Next Steps

- Providing feedback
 - Post
 - Online
 - Email
 - In-person
- Updated *Shoalhaven 2040 & What we Heard*
- Council decision
- Unrelated matters
- Keeping you informed



Further Information

We've provided several ways for you ask us questions or seek further information about *Shoalhaven 2040*.



phone 02 4429 5884



email council@shoalhaven.nsw.gov.au



www.getinvolved.shoalhaven.nsw.gov.au/LSP5



In-person or digital meeting

