

Kangaroo Valley Disaster recovery event

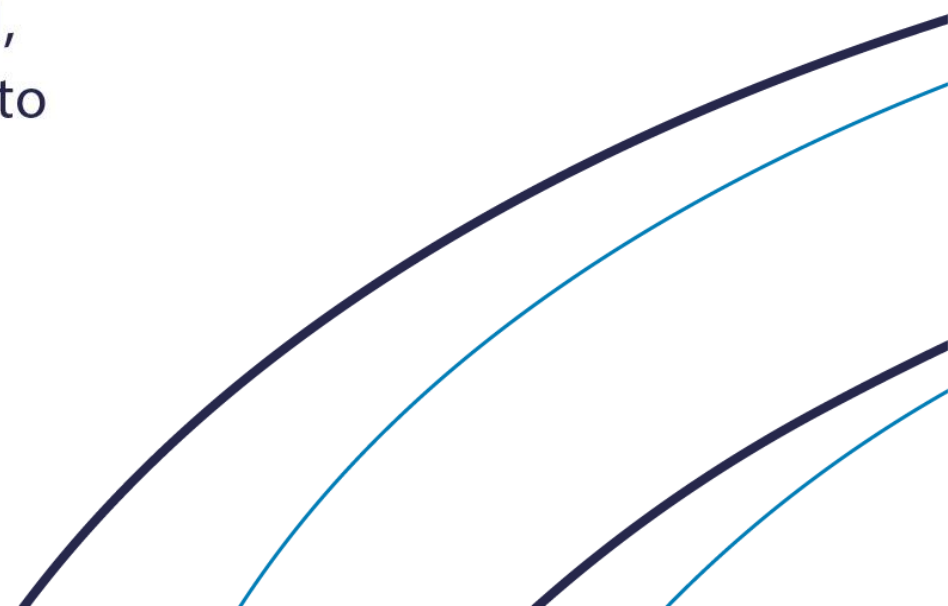
Tuesday 22 November



Acknowledgement of Country



We would like to acknowledge the Traditional Custodians of the land in which we gather upon today. We acknowledge their continuing connections to the land, culture and community. We pay respect to Elders past, present and future.



Agenda

Topic	Speaker	Time
Introductions	All	5 mins
Resilience NSW	Heidi Stratford Resilience NSW	5 mins
National emergency response	Phoebe Ward NEMA	5 mins
Specialist engineering solutions	Nicole Bailey NSW Public Works	5 mins
Tender package & roads update	Beorn Hulme Shoalhaven City Council	5 mins
Q&A	Heidi Stratford	25 mins
Barbeque and chat at 5.45 pm		

The role of Resilience NSW



Resilience
NSW



Flood recovery (February-March)



62
LGAs impacted



21,170
building
assessments



10,849
homes damaged



4,055
homes
uninhabitable



More than **1,100**
people in
emergency
accommodation



Over **280,000**
tonnes of flood
waste removed



Over **90** Recovery
Centres and
Assistance Points
in flood-impacted
communities



Over **52,000** visits
to Recovery
Centres and
Assistance Points



Almost **\$4 billion**
in joint State and
Commonwealth
funding to support
flood-impacted
communities



More than **\$174**
million
dispersed to
assist people
rebuild their homes
to a habitable
condition



Small businesses
grants of up to
\$50,000 with
\$121 million paid



Primary producer
grants
of up to \$75,000 with
over \$63 million paid

Flood recovery (June-July)



44
LGAs impacted



10,704
building
assessments



4,583
homes damaged



1,524
homes
uninhabitable



128 people in
emergency
accommodation



Close to **22,000**
tonnes of flood
waste removed



Over **30** Recovery
Centres and
Assistance Points
in flood-impacted
communities



Over **5,000** visits
to Recovery
Centres and
Assistance Points



More than **\$235**
million in joint
State and
Commonwealth
funding to support
flood-impacted
communities



More than **\$32**
million
dispersed to
assist people
rebuild their homes
to a habitable
condition



Small businesses
grants of up to
\$50,000 with
\$14 million paid



Primary producer
grants
of up to \$75,000 with
over \$7.4 million paid



Resilience
NSW

Phoebe Ward

National Emergency Management Agency





- On 1 September 2022, the National Recovery and Resilience Agency and Emergency Management Australia merged to form a new Executive Agency, called the **National Emergency Management Agency (NEMA)**.
- The Agency is part of the Home Affairs Portfolio.
- This will provide end-to-end management of Commonwealth responsibilities for the disaster management cycle.
- In a changing climate and a vast nation facing more frequent and intense floods, storms, bushfires and drought, we will ensure a better response in times of disaster, while driving long-term preparedness and lasting recovery.





What we do

We fund programs and initiatives



We work with communities, industry and NGOs



We provide national leadership



We provide round-the-clock all-hazards monitoring and operational coordination





Australian Government Disaster Relief and Recovery Initiatives

Interim National Recovery Framework

National governance and multi-jurisdictional coordination arrangements

Disaster Recovery Funding Arrangements

\$12 billion to states and territories over the last decade to support the recovery of disaster-affected communities

Disaster Recovery Payment

Activated in response to major disasters and provided \$1,000 per adult and \$400 per child

Disaster Recovery Allowance

Up to 13 weeks of income support for disaster-affected individuals



Where we are

We have local Recovery Support Officers across every state in Australia.

The interactive map on our website shows where our network is and what regions and LGAs are covered.

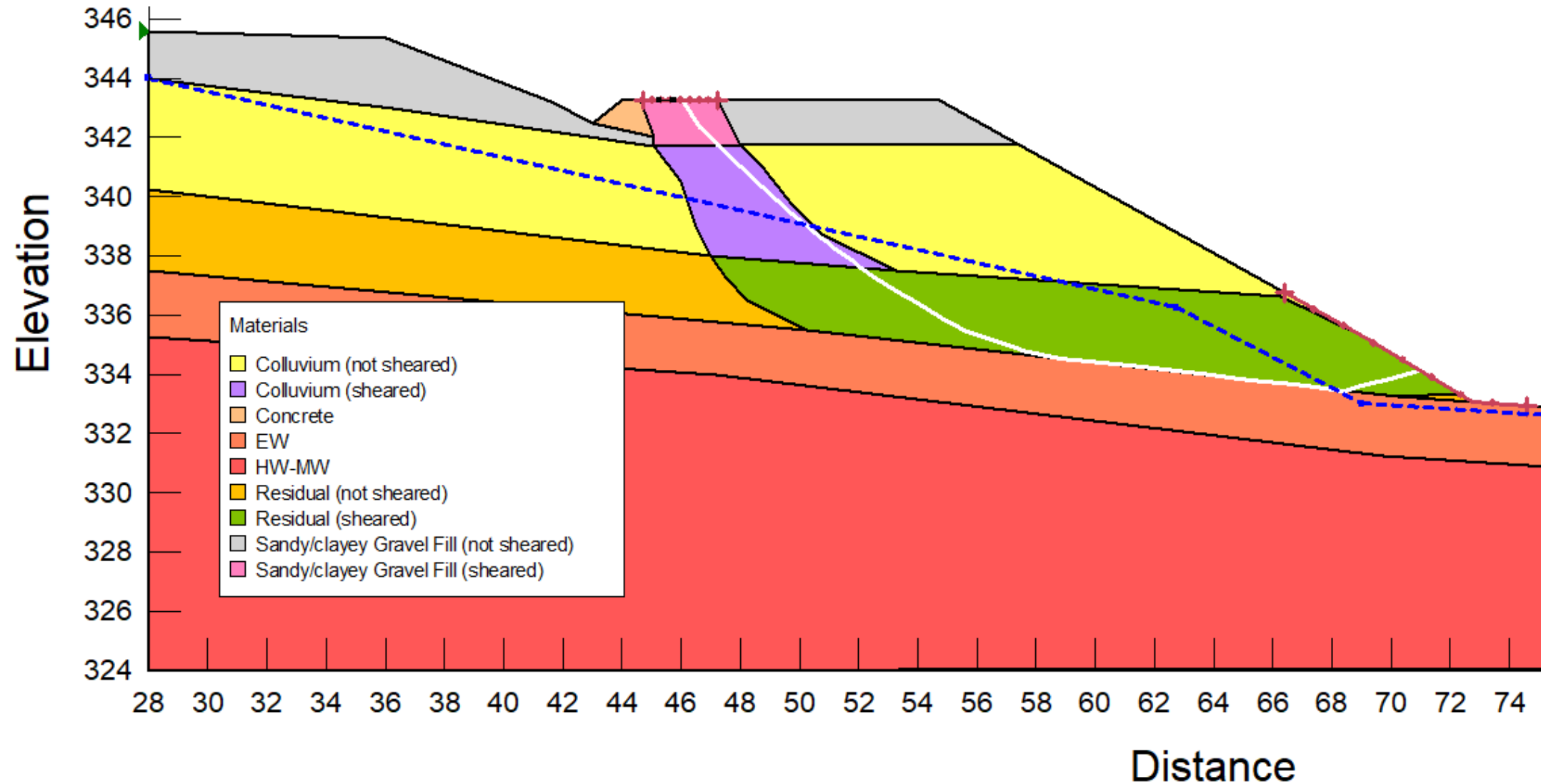
<https://recovery.gov.au/get-support#/map>

Nicole Bailey

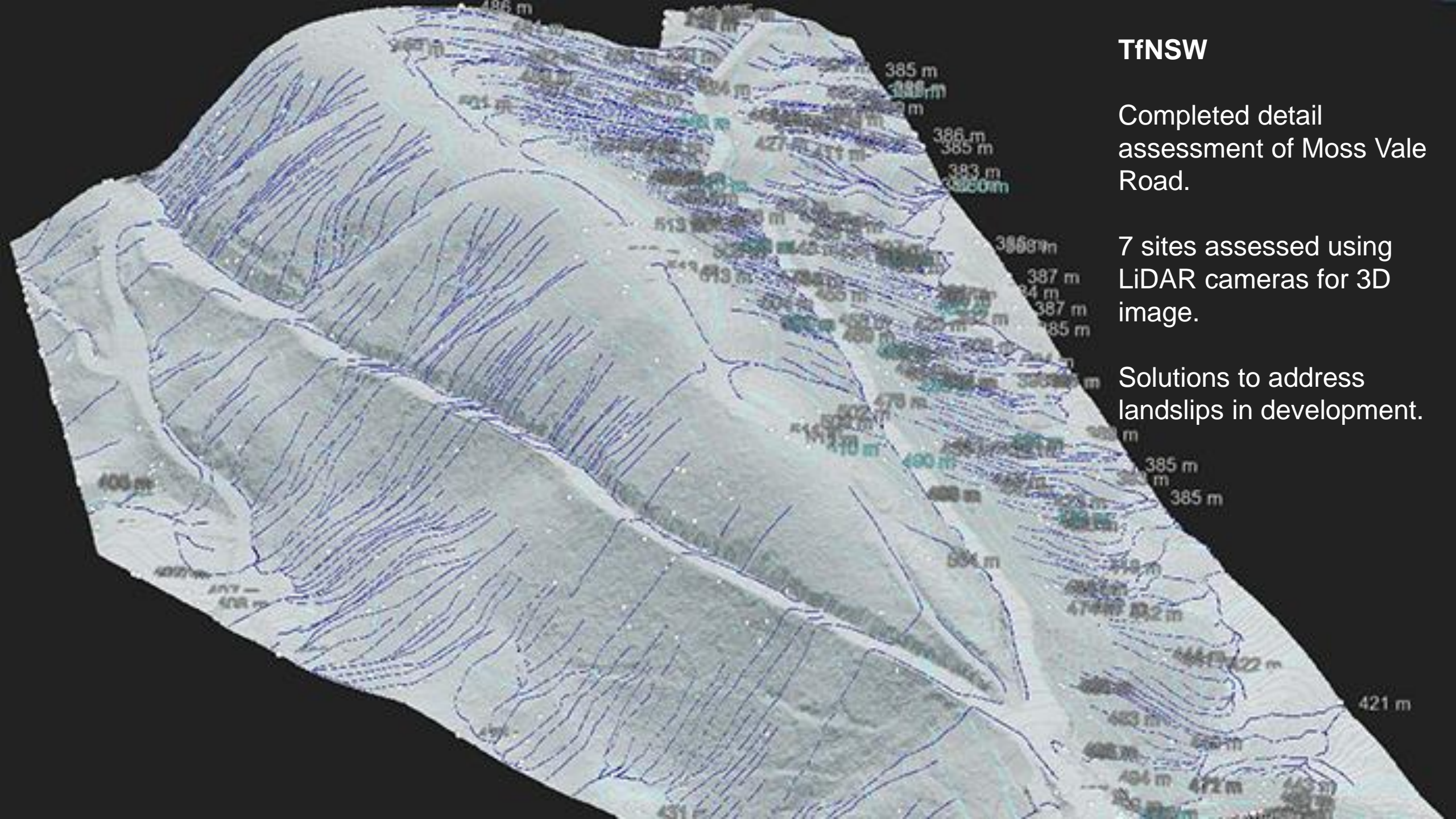
NSW Public Works



Geology & slip plane







TfNSW

Completed detail
assessment of Moss Vale
Road.

7 sites assessed using
LiDAR cameras for 3D
image.

Solutions to address
landslips in development.

Beorn Hulme

Shoalhaven City Council

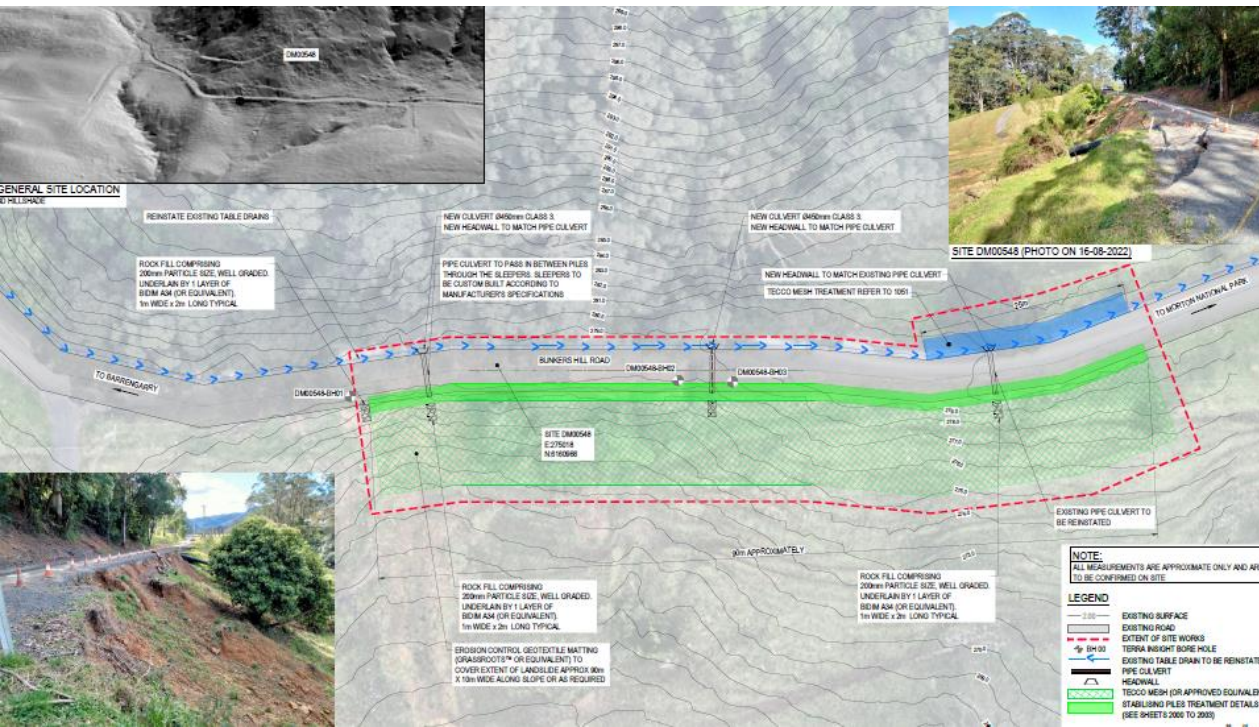


38 landslip sites

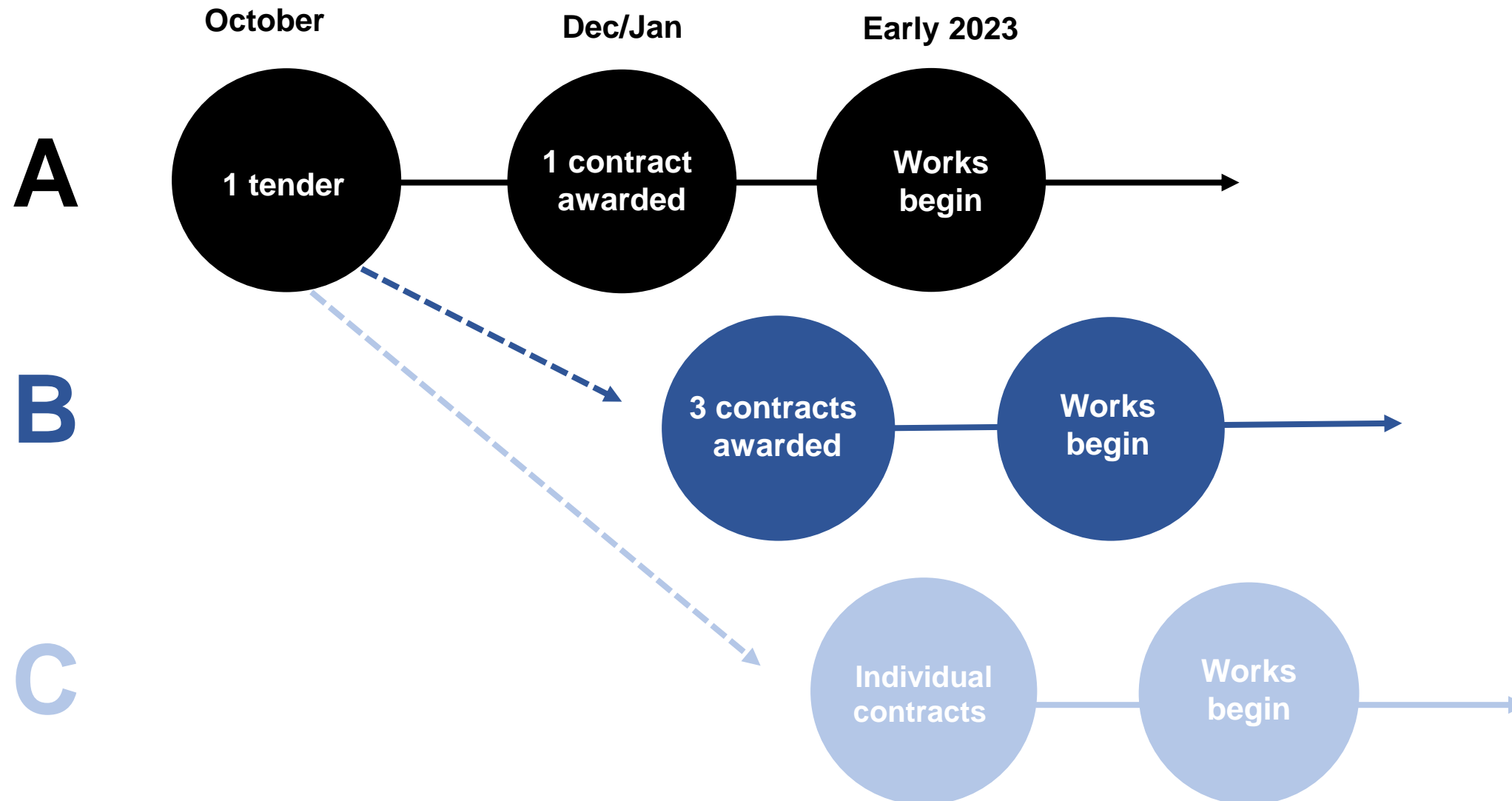


Current status

- SLR delivered 38 x designs
- Out to tender on 31 October
- Tender briefing on 11 November
- Tenders close 6 December
- Optimistic about potential bidders



Contract scenarios



Project delivery timeframe

31 Oct 2022
Call tenders

6 Dec
Tenders close

Dec/ Jan
Tender
evaluation
PWA, TfNSW,
SCC

Jan / Feb
PWA tender
endorsement
TFNSW
scope
approval

Feb
Award tender

6 weeks
Contractor
mobilisation

March 2023
Work
commences

Funding opportunities

- **Disaster recovery funding**
 - To fund landslip, pavement and other repairs
- **Betterment Fund**
 - \$100M for NSW councils
 - Applications close 2022
 - Successful projects announced Jan 2023
 - Deeds executed and works start early 2023
- **Fixing Local Roads - pothole repair road**
 - Application lodged late October for \$590,000
 - Successful applications announced Nov 2022



Q&A

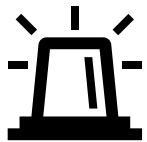


Questions – main themes

New FAQ section
on the weather
events page



Communications during works roll out



Emergency services access



Traffic controls & load limits




Ongoing maintenance

Shoalhaven City Council

Home / Projects & Engagement / Major Projects & Works / Severe weather events reconstruction work - 2022

Severe weather events reconstruction work - 2022

Information on local road reconstruction works caused by the 2022 natural disasters.



Announcement
Kangaroo Valley community meeting. Join us at the community hall at 4.30 pm on Tuesday 22 November. Go to Council's 'Get Involved' page to RSVP.

Project Status: In progress
Last updated: 16 November 2022

About the project

The July 2022 east coast low natural disaster event brought with it torrential rain, damaging winds and floods that resulted in widespread landslips, road damage and isolation for some in our community.

The Shoalhaven community showed incredible resilience again following the March 2022 natural disaster event that brought more heavy and sustained rainfall that caused further widespread damage to our public infrastructure and impacted many in our community.

The September 2022 severe weather and floods was also declared natural disaster but mainly caused widespread damage to communities in western NSW. This same weather event also impacted the Shoalhaven LGA although the damage to our infrastructure and the impacts to our community this time was much milder.

On this page

- [Completed & Upcoming Works](#)
- [Major Landslip Reports](#)
- [Current Road Load Limits](#)
- [Road Closure - Toyne Point](#)
- [Storm and Flood Customer Care Service](#)

Background

For the months of January to July 2022, rainfall in Berrangarry alone reached a total of 2,056mm (see related documents) compared to an average rainfall for the same period of 854mm and was more than double the rainfall what residents would normally experience. This follows two summers of La Niña weather patterns with a third La Niña expected over the 2022/23 summer expecting to bring more heavy rainfall and flooding.

During this time 2 severe weather events were declared natural disasters by the NSW Government:

- [AGRN1010](#) - NSW severe weather and flooding from 22 February 2022 onwards
- [AGRN1025](#) - NSW severe weather and flooding from 27 June 2022 onwards

The impacts on public infrastructure were significant, including:

- 1200 records of damage and emergency works across the Shoalhaven
- an estimated \$75 million in damaged roads
- an estimated \$4 million in damage to flood levees
- 99 landslips (98 classified as major) affecting 23 roads
- 13 sinkholes

Stay up-to-date

[Jump to subscribe](#)

Related Information

Related Links

- [Storm and Flood customer care service \(Toll-free 1300\)](#)
- [Roadworks](#)
- [Disaster dashboard](#)
- [Flood recovery](#)
- [Tender for 38 landslips](#)
- [Kangaroo Valley Community meeting](#)

Related Documents

- [Load Limitation assessment of 4 Roads within Kangaroo Valley - Viable Update](#)
- [Map of Damage across Shoalhaven LGA 2022](#)
- [Rainfall Records - 2022](#)
- [Load Limit Assessment Methodology - Road Damage - Storm / Flood Damage 2022](#)
- [\\$500 Anticipation Form - Load Limit Examination](#)
- [31 October 2022 Council Report Q22-879 Progress Update - Infrastructure Recovery Works - Natural Disaster Events 2022](#)



THANK YOU

Please enjoy the BBQ

