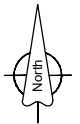




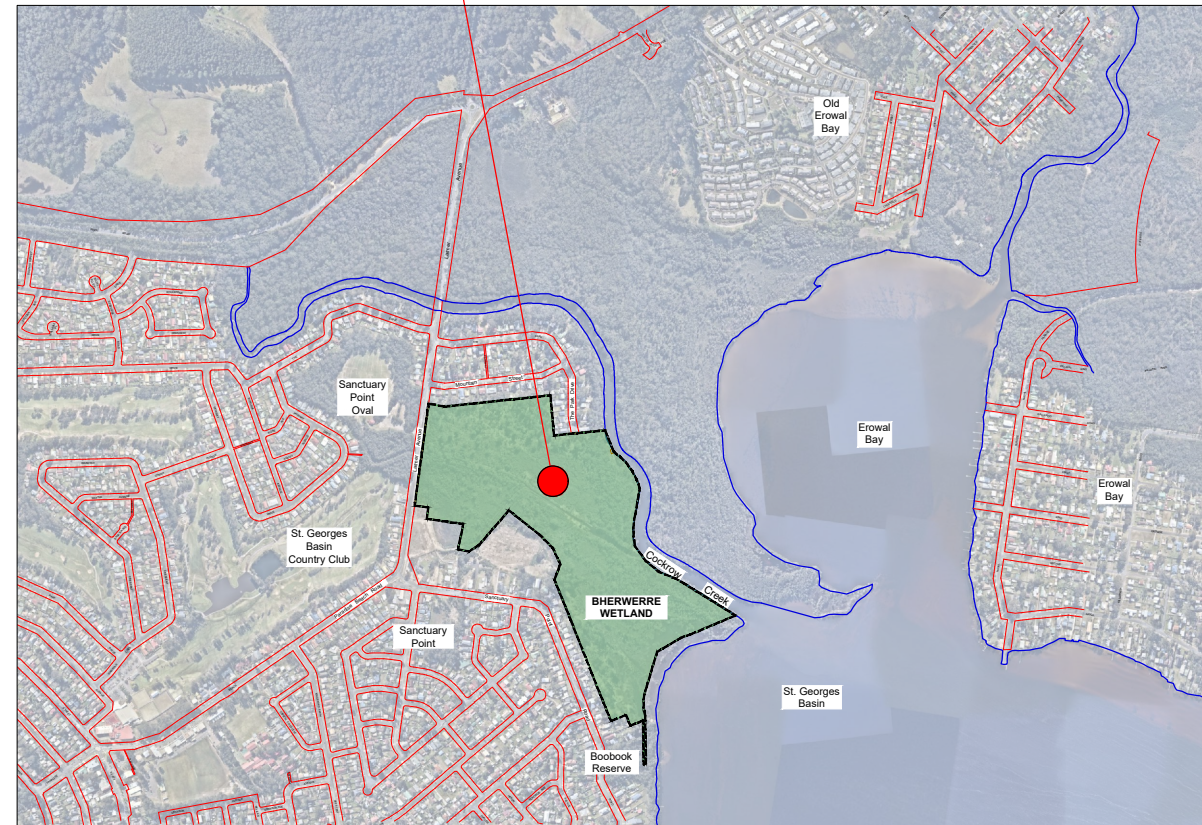
Sanctuary Point - Bherwerre Wetland Boardwalk Construction Stage 1

List of Drawings

Drawing Number	Drawing Title
5384_05A	Title Sheet / Locality Plan
5384_06A	Index Sheet
5384_07A	Design Layout Plan 1 - Alignment A
5384_08A	Design Layout Plan 2 & 3 - Alignment B and Detail Area 3
5384_10A	Detail Area 1 - Larmer Ave Entrance
5384_11A	Detail Area 2 - The Park Drive Carpark Concept Plan
5384_12A	Detail Area 4 - Viewing Platform Concept Plan
5384_14	Typical Boardwalk Details (sheet 1 of 2)
5384_15	Typical Boardwalk Details (sheet 2 of 2)



Sanctuary Point - Bherwerre Wetland
Boardwalk Construction
Site Location



Locality Plan - Aerial Photo

SURVEYED:	CHECKED: M. Green 2/08/21
DESIGNED: K. Murray July 2021	APPROVED: C. Exton 2/08/21
DRAWN: K. Murray July 2021	AUTHORISED:
CAD FILE: 5384_05.dwg	CLIENT:

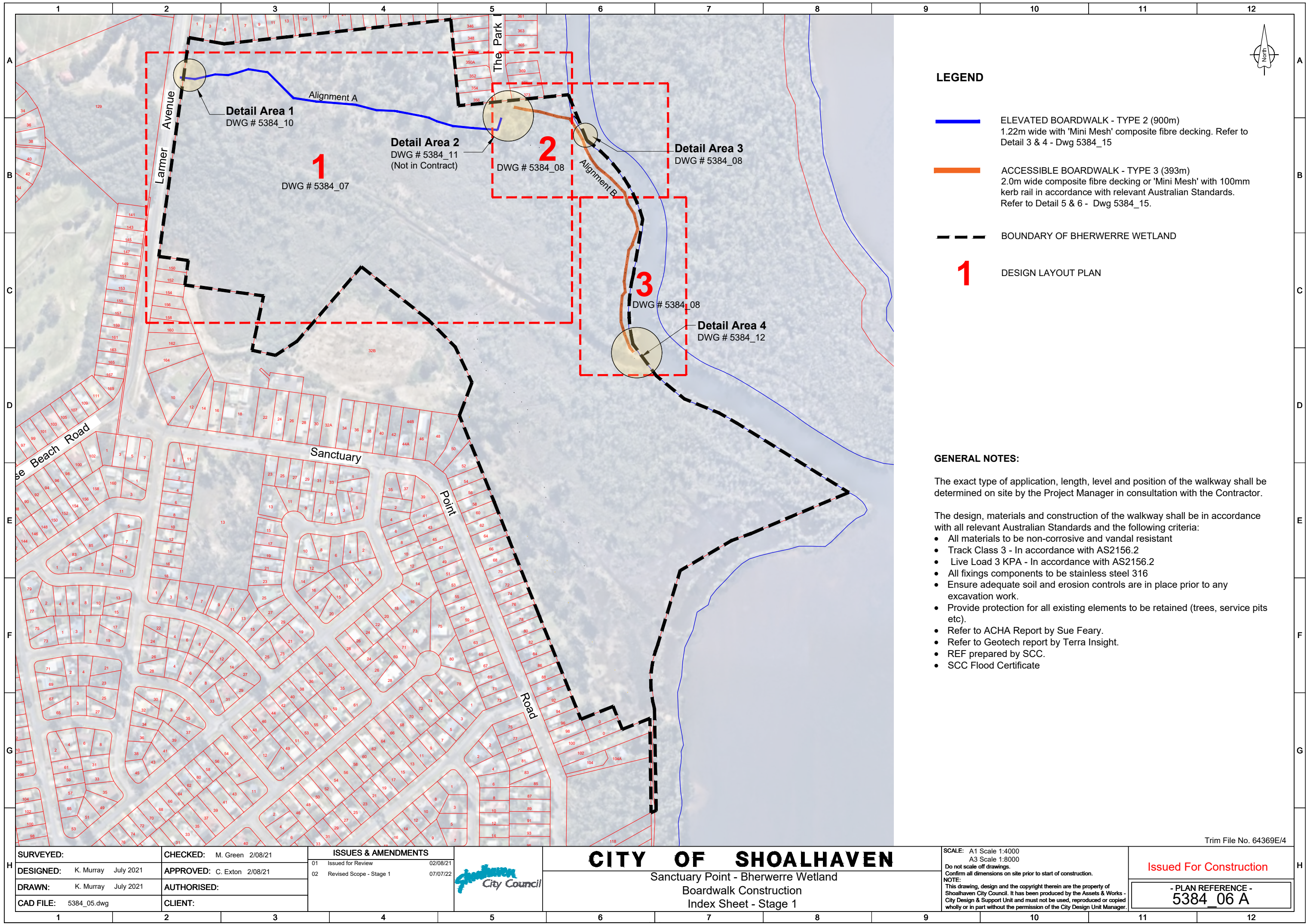
ISSUES & AMENDMENTS		
01	Issued for Review	02/08/21
02	Revised Scope - Stage 1	07/07/22



CITY OF SHOALHAVEN
Sanctuary Point - Bherwerre Wetland
Boardwalk Construction Stage 1
Title Sheet / Locality Plan

SCALE: A1 Scale 1:10,000
A3 Scale 1:20,000
Do not scale off drawings.
Confirm all dimensions on site prior to start of construction.
NOTE:
This drawing, design and the copyright therein are the property of Shoalhaven City Council. It has been produced by the Assets & Works - City Design & Support Unit and must not be used, reproduced or copied wholly or in part without the permission of the City Design Unit Manager.

Trim File No. 64369E/4
Issued For Construction
- PLAN REFERENCE -
5384_05A



LEGEND

- ELEVATED BOARDWALK - TYPE 2 (900m)
1.22m wide with 'Mini Mesh' composite fibre decking. Refer to Detail 3 & 4 - Dwg 5384_15
- ACCESSIBLE BOARDWALK - TYPE 3 (393m)
2.0m wide composite fibre decking or 'Mini Mesh' with 100mm kerb rail in accordance with relevant Australian Standards. Refer to Detail 5 & 6 - Dwg 5384_15.
- BOUNDARY OF BHERWERRE WETLAND
- 1 DESIGN LAYOUT PLAN

GENERAL NOTES:

The exact type of application, length, level and position of the walkway shall be determined on site by the Project Manager in consultation with the Contractor.

The design, materials and construction of the walkway shall be in accordance with all relevant Australian Standards and the following criteria:

- All materials to be non-corrosive and vandal resistant
- Track Class 3 - In accordance with AS2156.2
- Live Load 3 KPA - In accordance with AS2156.2
- All fixings components to be stainless steel 316
- Ensure adequate soil and erosion controls are in place prior to any excavation work.
- Provide protection for all existing elements to be retained (trees, service pits etc).
- Refer to ACHA Report by Sue Feary.
- Refer to Geotech report by Terra Insight.
- REF prepared by SCC.
- SCC Flood Certificate

SURVEYED:	CHECKED: M. Green 2/08/21
DESIGNED: K. Murray July 2021	APPROVED: C. Exton 2/08/21
DRAWN: K. Murray July 2021	AUTHORISED:
CAD FILE: 5384_05.dwg	CLIENT:

ISSUES & AMENDMENTS	
01 Issued for Review	02/08/21
02 Revised Scope - Stage 1	07/07/22



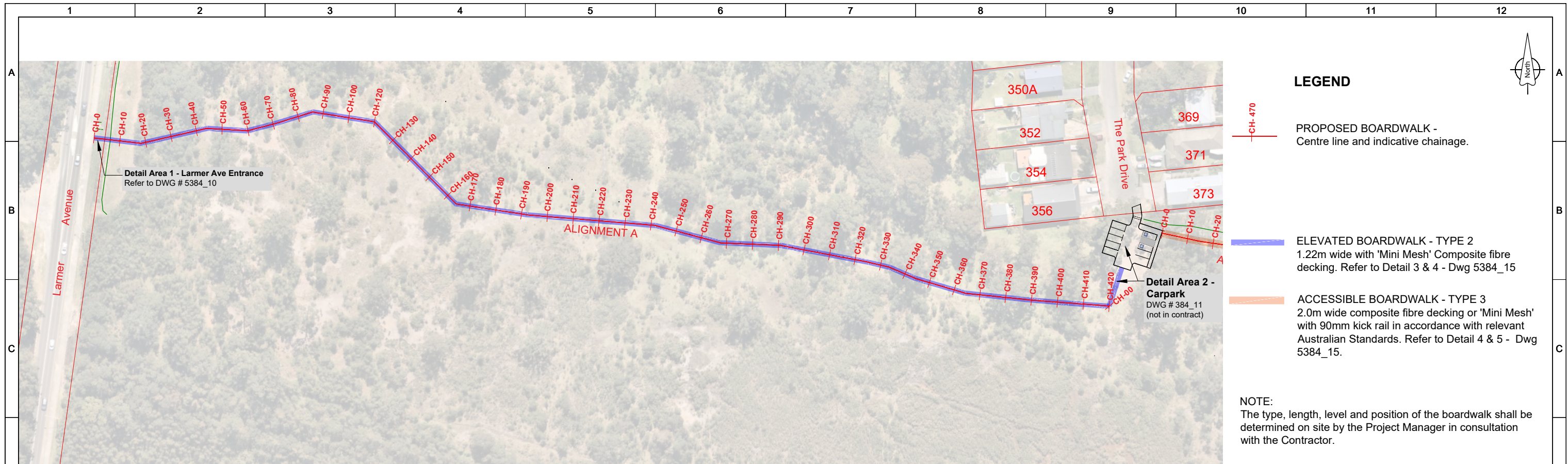
CITY OF SHOALHAVEN
Sanctuary Point - Bherwerre Wetland
Boardwalk Construction
Index Sheet - Stage 1

SCALE: A1 Scale 1:4000
A3 Scale 1:8000
Do not scale off drawings.
Confirm all dimensions on site prior to start of construction.
NOTE:
This drawing, design and the copyright therein are the property of Shoalhaven City Council. It has been produced by the Assets & Works - City Design & Support Unit and must not be used, reproduced or copied wholly or in part without the permission of the City Design Unit Manager.




Issued For Construction

- PLAN REFERENCE -
5384_06 A

Trim File No. 64369E/4



LEGEND

-  **CH-470**
PROPOSED BOARDWALK - Centre line and indicative chainage.
-  **ELEVATED BOARDWALK - TYPE 2**
1.22m wide with 'Mini Mesh' Composite fibre decking. Refer to Detail 3 & 4 - Dwg 5384_15
-  **ACCESSIBLE BOARDWALK - TYPE 3**
2.0m wide composite fibre decking or 'Mini Mesh' with 90mm kick rail in accordance with relevant Australian Standards. Refer to Detail 4 & 5 - Dwg 5384_15.

NOTE:
The type, length, level and position of the boardwalk shall be determined on site by the Project Manager in consultation with the Contractor.

Design Layout Plan 1 - Alignment A
A1 Scale 1:750
A3 Scale 1:1500

Trim File No. 64369E/4

SURVEYED: A. BURCHER OCT. 2020	CHECKED: M. Green 2/08/21
DESIGNED: K. Murray July 2021	APPROVED: C. Exton 2/08/21
DRAWN: K. Murray July 2021	AUTHORISED:
CAD FILE: 5384_05.dwg	CLIENT:

ISSUES & AMENDMENTS	
01 Issued for Review	02/08/21
02 Revised Scope - Stage 1	07/07/22



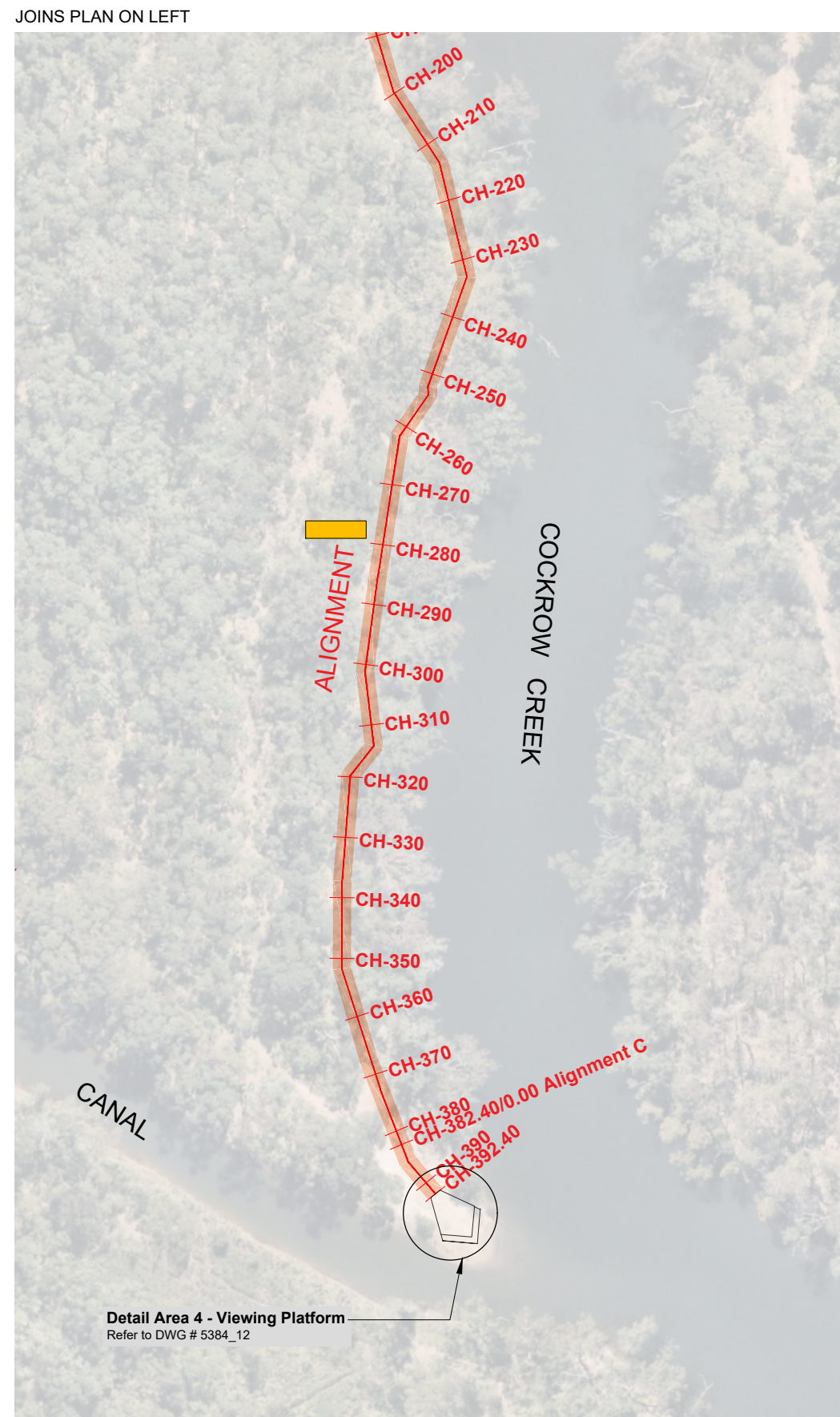
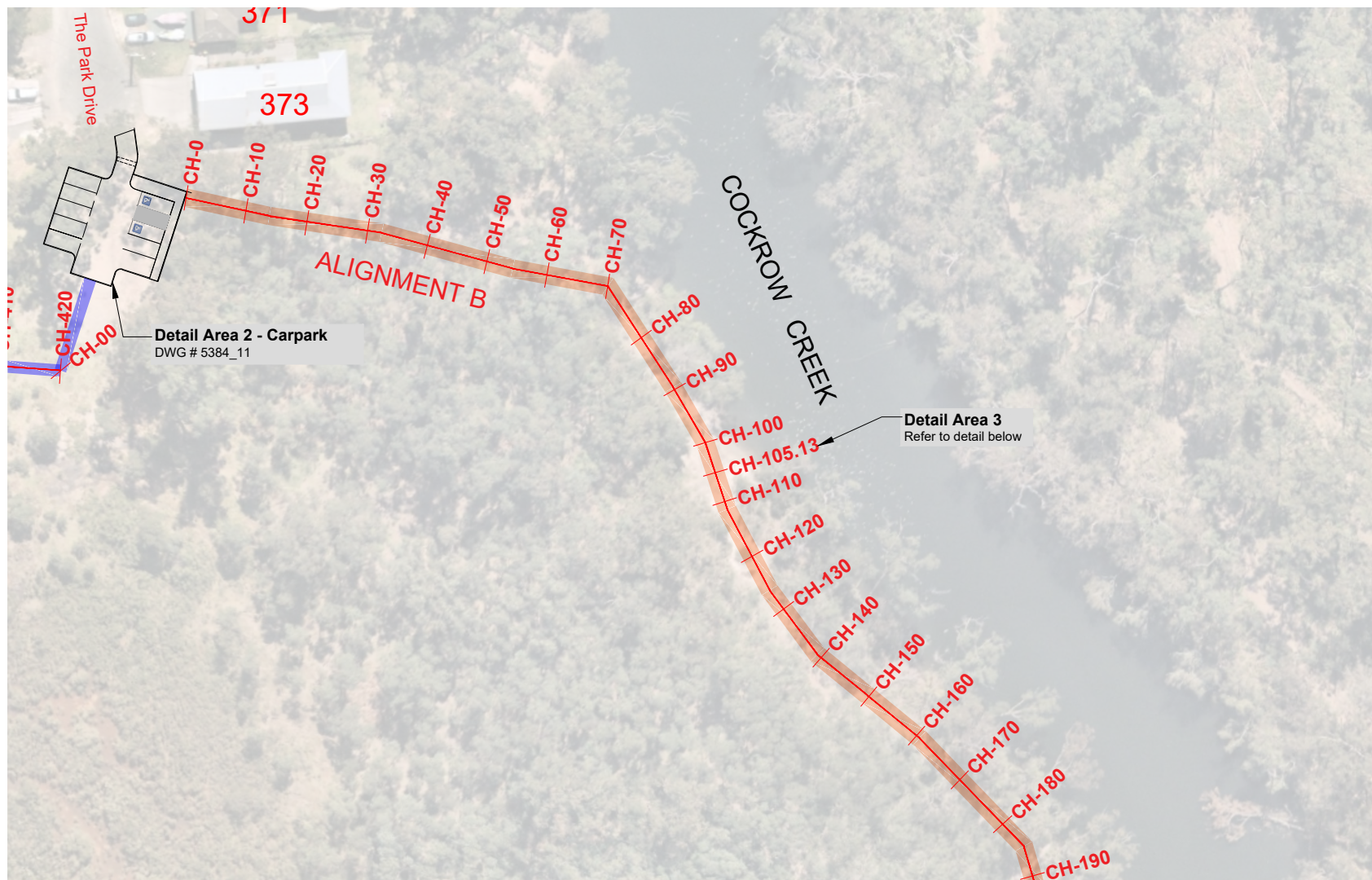
CITY OF SHOALHAVEN

Sanctuary Point - Bherwerre Wetland
Boardwalk Construction Stage 1
Design Layout Plan 1 - Alignment A

SCALE: A1 Scale 1:75
A3 Scale 1:150
Do not scale off drawings.
Confirm all dimensions on site prior to start of construction.
NOTE:
This drawing, design and the copyright therein are the property of Shoalhaven City Council. It has been produced by the Assets & Works - City Design & Support Unit and must not be used, reproduced or copied wholly or in part without the permission of the City Design Unit Manager.

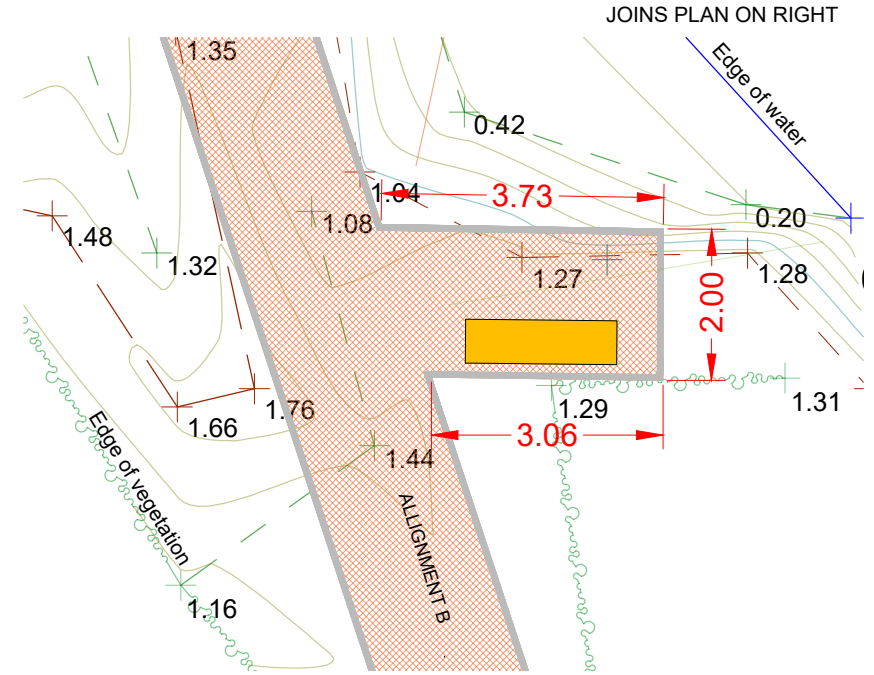
Issued For Construction

- PLAN REFERENCE -
5384_07A



Design Layout Plan 2 - Accessible Boardwalk Plan (Alignment B)
 A1 Scale 1:500
 A3 Scale 1:1000

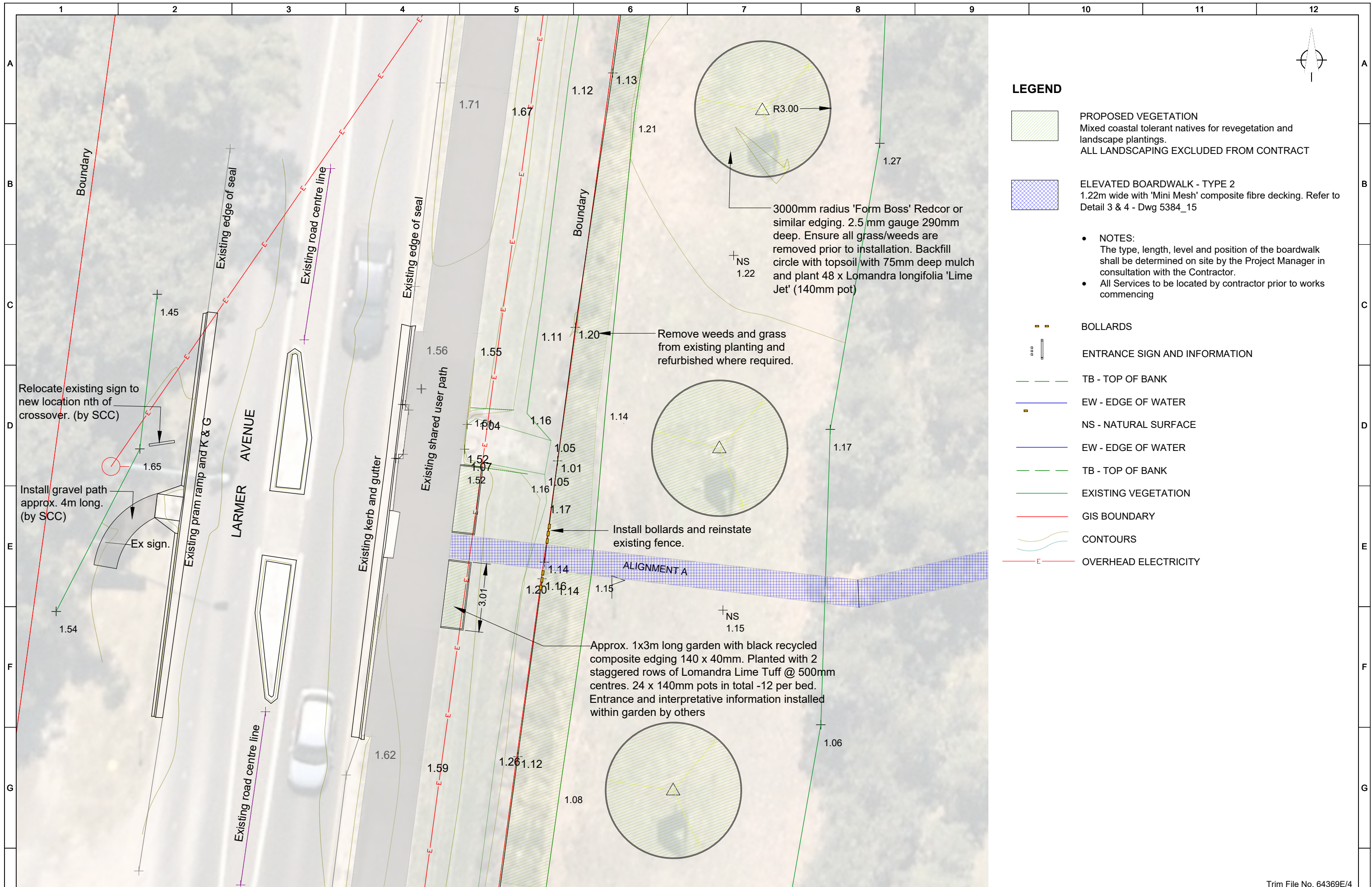
- LEGEND**
- PROPOSED BOARDWALK
Centre line and indicative chainage.
 - ELEVATED BOARDWALK - TYPE 2
1.22m wide with 'Mini Mesh' composite fibre decking Refer to Detail 3 & 4 - Dwg 5384_15
 - ACCESSIBLE BOARDWALK - TYPE 3
2.0m wide composite fibre decking or 'Mini Mesh' with 90mm kick rail in accordance with relevant Australian Standards. Refer to Detail 5 & 6 - Dwg 5384_15.
- NOTE:**
 The type, length, level and position of the boardwalk shall be determined on site by the Project Manager in consultation with the Contractor.
- PARK SEATING WITH BACK & ARM RESTS
'Monoco' by Gossi Park & Street Furniture. Fixed to decking and bearers with stainless coach screws/bolts.
 - EDGE OF WATER
 - TOP OF BANK
 - BOTTOM OF BANK
 - EXISTING VEGETATION
 - CONTOURS




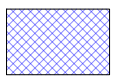

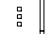









DETAIL AREA 3 (approx chainage 105.13)
 A1 Scale 1:50
 A3 Scale 1:100

Design Layout Plan 3 - Accessible Boardwalk Plan (Alignment B)
 A1 Scale 1:500
 A3 Scale 1:1000

SURVEYED: A. BURCHER OCT. 2020 DESIGNED: K. Murray July 2021 DRAWN: K. Murray July 2021 CAD FILE: 5384_05.dwg		CHECKED: M. Green 2/08/21 APPROVED: C. Exton 2/08/21 AUTHORISED: CLIENT:		ISSUES & AMENDMENTS 01 Issued for Review 02/08/21 02 Revised Scope - Stage 1 07/07/22					CITY OF SHOALHAVEN Sanctuary Point - Bherwerre Wetland Boardwalk Construction Stage 1 Design Layout Plan 2 & 3 - Alignment B & Detail Area 3			SCALE: Do not scale off drawings. Confirm all dimensions on site prior to start of construction. NOTE: This drawing, design and the copyright therein are the property of Shoalhaven City Council. It has been produced by the Assets & Works - City Design & Support Unit and must not be used, reproduced or copied wholly or in part without the permission of the City Design Unit Manager.		Issued For Construction - PLAN REFERENCE - 5384_08A	
--	--	---	--	--	--	--	--	--	--	--	--	--	--	--	--



LEGEND

-  PROPOSED VEGETATION
Mixed coastal tolerant natives for revegetation and landscape plantings.
ALL LANDSCAPING EXCLUDED FROM CONTRACT
-  ELEVATED BOARDWALK - TYPE 2
1.22m wide with 'Mini Mesh' composite fibre decking. Refer to Detail 3 & 4 - Dwg 5384_15
- **NOTES:**
The type, length, level and position of the boardwalk shall be determined on site by the Project Manager in consultation with the Contractor.
All Services to be located by contractor prior to works commencing
-  BOLLARDS
-  ENTRANCE SIGN AND INFORMATION
-  TB - TOP OF BANK
-  EW - EDGE OF WATER
-  NS - NATURAL SURFACE
-  EW - EDGE OF WATER
-  TB - TOP OF BANK
-  EXISTING VEGETATION
-  GIS BOUNDARY
-  CONTOURS
-  OVERHEAD ELECTRICITY

SURVEYED: A. BURCHER OCT. 2020	CHECKED: M. Green 2/08/21
DESIGNED: K. Murray July 2021	APPROVED: C. Exton 2/08/21
DRAWN: K. Murray July 2021	AUTHORISED:
CAD FILE: 5384_05.dwg	CLIENT: M. Green July 2021

ISSUES & AMENDMENTS	
01 Issued for Review	02/08/21
02 Revised Scope - Stage 1	07/07/22



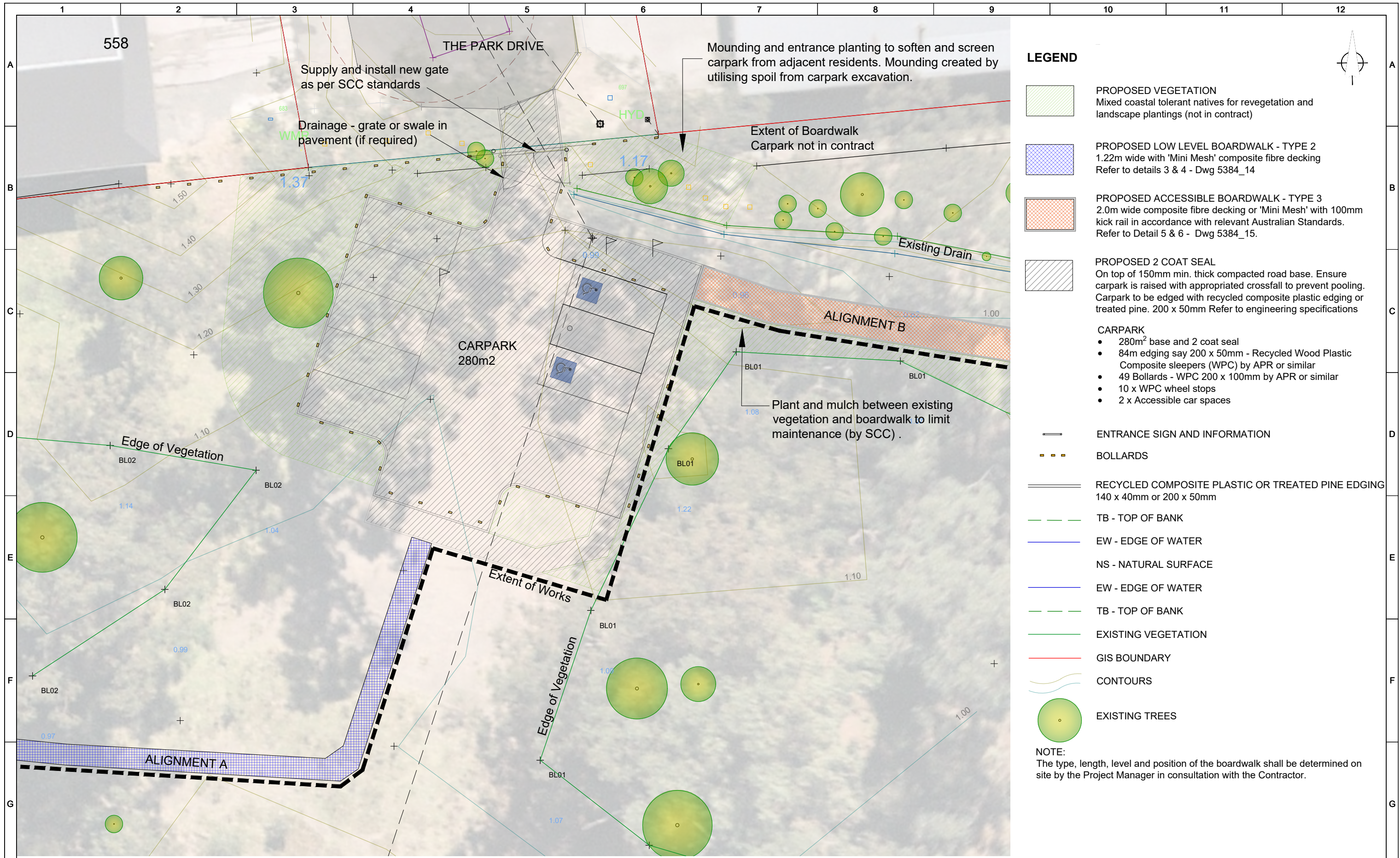
CITY OF SHOALHAVEN
Sanctuary Point - Bherwerre Wetland
Boardwalk Construction Stage 1
Detail Area 1 - Larmer Road Entrance

SCALE: A1 Scale 1:75
A3 Scale 1:150
Do not scale off drawings.
Confirm all dimensions on site prior to start of construction.
NOTE:
This drawing, design and the copyright therein are the property of Shoalhaven City Council. It has been produced by the Assets & Works - City Design & Support Unit and must not be used, reproduced or copied wholly or in part without the permission of the City Design Unit Manager.

Trim File No. 64369E/4

Issued For Construction

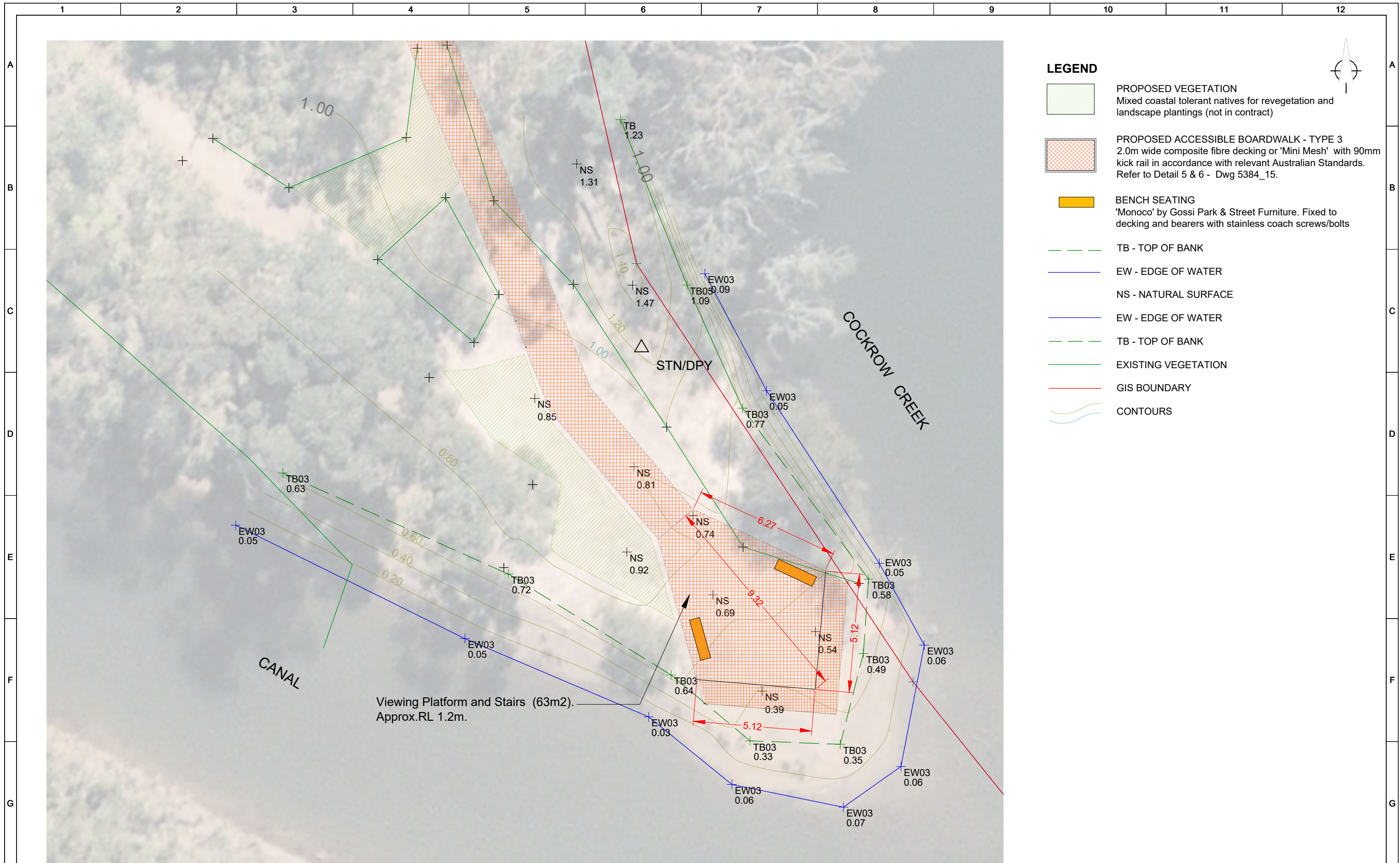
- PLAN REFERENCE -
5384_10A



- LEGEND**
- PROPOSED VEGETATION
Mixed coastal tolerant natives for revegetation and landscape plantings (not in contract)
 - PROPOSED LOW LEVEL BOARDWALK - TYPE 2
1.22m wide with 'Mini Mesh' composite fibre decking
Refer to details 3 & 4 - Dwg 5384_14
 - PROPOSED ACCESSIBLE BOARDWALK - TYPE 3
2.0m wide composite fibre decking or 'Mini Mesh' with 100mm kick rail in accordance with relevant Australian Standards.
Refer to Detail 5 & 6 - Dwg 5384_15.
 - PROPOSED 2 COAT SEAL
On top of 150mm min. thick compacted road base. Ensure carpark is raised with appropriated crossfall to prevent pooling.
Carpark to be edged with recycled composite plastic edging or treated pine. 200 x 50mm Refer to engineering specifications
- CARPARK**
- 280m² base and 2 coat seal
 - 84m edging say 200 x 50mm - Recycled Wood Plastic Composite sleepers (WPC) by APR or similar
 - 49 Bollards - WPC 200 x 100mm by APR or similar
 - 10 x WPC wheel stops
 - 2 x Accessible car spaces
- ENTRANCE SIGN AND INFORMATION
 - BOLLARDS
 - RECYCLED COMPOSITE PLASTIC OR TREATED PINE EDGING
140 x 40mm or 200 x 50mm
 - TB - TOP OF BANK
 - EW - EDGE OF WATER
 - NS - NATURAL SURFACE
 - EW - EDGE OF WATER
 - TB - TOP OF BANK
 - EXISTING VEGETATION
 - GIS BOUNDARY
 - CONTOURS
 - EXISTING TREES

NOTE:
The type, length, level and position of the boardwalk shall be determined on site by the Project Manager in consultation with the Contractor.

Trim File No. 64369E/4		CITY OF SHOALHAVEN		SCALE: A1 Scale 1:75 A3 Scale 1:150 Do not scale off drawings. Confirm all dimensions on site prior to start of construction.	
SURVEYED: S. ABRAHAM MAR. 2020		CHECKED: M. Green 2/08/21		Sanctuary Point - Bherwerre Wetland Boardwalk Construction Detail Area 2 - Carpark Park Drive Concept	
DESIGNED: K. Murray July 2021		APPROVED: C. Exton 2/08/21			
DRAWN: K. Murray July 2021		AUTHORISED:		- PLAN REFERENCE - 5384_11A	
CAD FILE: 5384_05.dwg		CLIENT:			
		City Council		NOTE: This drawing, design and the copyright therein are the property of Shoalhaven City Council. It has been produced by the Assets & Works - City Design & Support Unit and must not be used, reproduced or copied wholly or in part without the permission of the City Design Unit Manager.	



- LEGEND**
- PROPOSED VEGETATION
Mixed coastal tolerant natives for revegetation and landscape plantings (not in contract)
 - PROPOSED ACCESSIBLE BOARDWALK - TYPE 3
2.0m wide composite fibre decking or 'Mini Mesh' with 90mm kick rail in accordance with relevant Australian Standards. Refer to Detail 5 & 6 - Dwg 5384_15.
 - BENCH SEATING
'Monoco' by Gossi Park & Street Furniture. Fixed to decking and bearers with stainless coach screws/bolts
 - TB - TOP OF BANK
 - EW - EDGE OF WATER
 - NS - NATURAL SURFACE
 - EW - EDGE OF WATER
 - TB - TOP OF BANK
 - EXISTING VEGETATION
 - GIS BOUNDARY
 - CONTOURS

SURVEYED: A. BURCHER OCT. 2020	CHECKED: M. Green 2/08/21
DESIGNED: K. Murray July 2021	APPROVED: C. Exton 2/08/21
DRAWN: K. Murray July 2021	AUTHORISED:
CAD FILE: 5384_05.dwg	CLIENT:

ISSUES & AMENDMENTS		
01	Issued for Review	02/08/21
02	Revised Scope - Stage 1	07/07/22



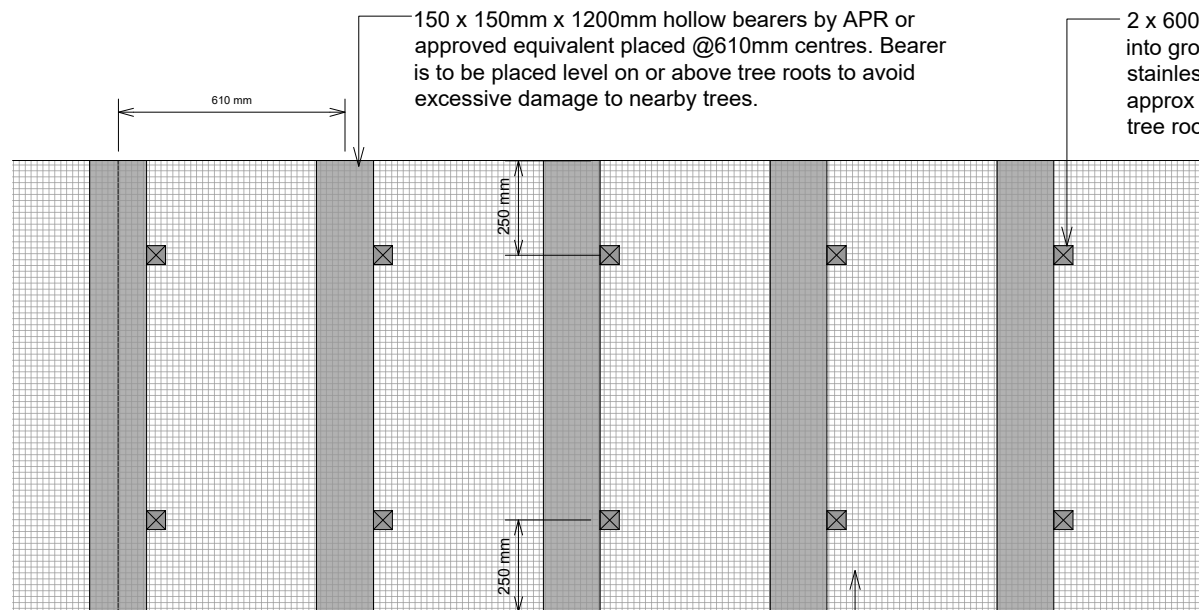
CITY OF SHOALHAVEN
 Sanctuary Point - Bherwerre Wetland
 Boardwalk Construction - Stage 1
 Detail Area 4 - Viewing Platform Concept Plan

SCALE: A1 Scale 1:75
 A3 Scale 1:150
 Do not scale off drawings.
 Confirm all dimensions on site prior to start of construction.
 NOTE:
 This drawing, design and the copyright therein are the property of Shoalhaven City Council. It has been produced by the Assets & Works - City Design & Support Unit and must not be used, reproduced or copied wholly or in part without the permission of the City Design Unit Manager.

Trim File No. 64369E/4

Issued For Construction

- PLAN REFERENCE -
5384_12A

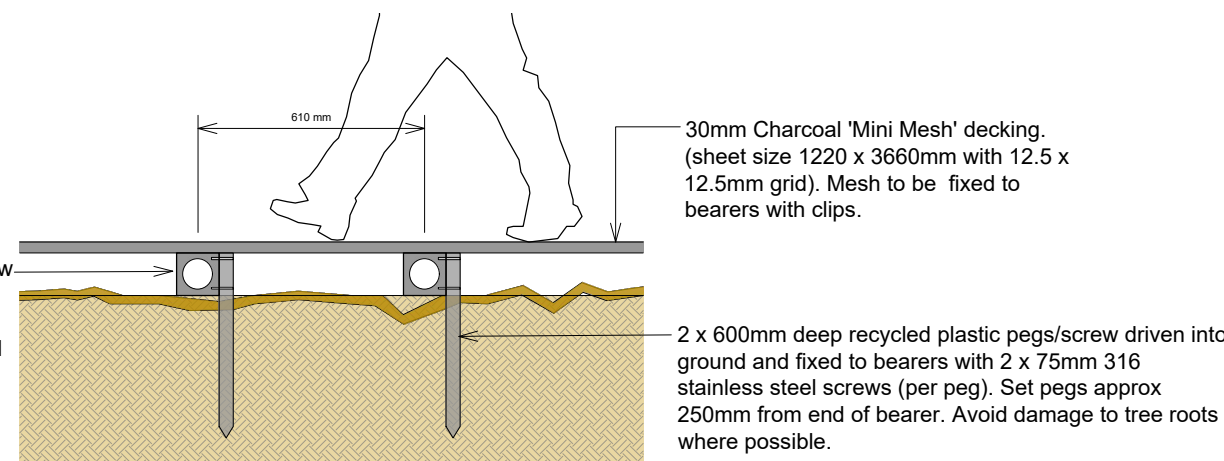


1 Typical Plan: Type 1 - Recycled Plastic Low Boardwalk
Scale 1:10 for A1 size sheet, 1:20 for A3 size sheet

30mm charcoal 'Mini Mesh' decking (sheet size 1220 x 3660mm with 12.5 x 12.5mm grid). Mesh to be fixed to bearers with clips.

NOTE:
Hollow bearers can be substituted for 200 x 50mm recycled plastic solid bearers

150 x 150mm x 1200mm hollow bearers by APR or approved equivalent placed @610mm centres. Bearer is to be placed level on or above tree roots to avoid excessive damage to nearby trees.



2 Typical Section: Type 1 - Recycled Plastic Low Boardwalk
Scale 1:10 for A1 size sheet, 1:20 for A3 size sheet

GENERAL NOTES:

These Typical Details show indicative options for the proposed walkways Types 1. Refer to plan 5384_06. The exact type of application, length, level and position of the walkway shall be determined on site by the Contractor in consultation with the Project Manager.

The design, materials and construction of the walkway shall be in accordance with all relevant Australian Standards and the following criteria:

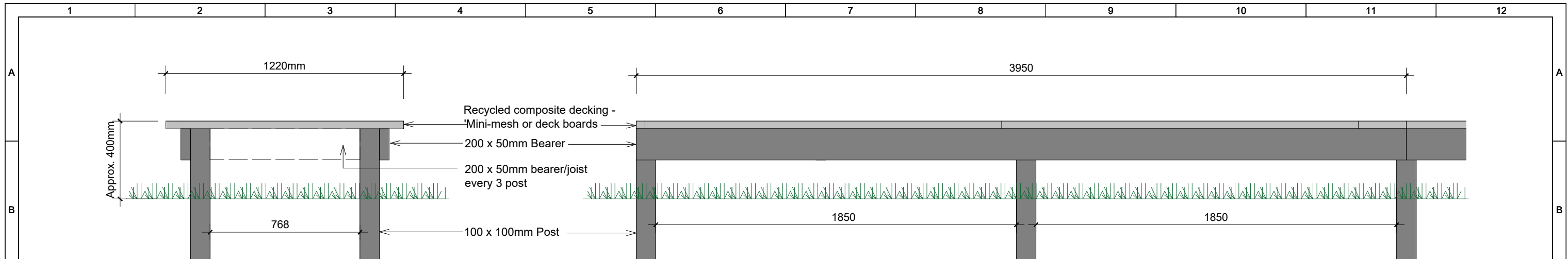
- All materials to be non-corrosive and vandal resistant
- Track Class 3 - In accordance with AS2156.2
- Live Load 3 KPA - In accordance with AS2156.2
- All fixings components to be stainless steel 316
- Ensure adequate soil and erosion controls are in place prior to any excavation work.
- Provide protection for all existing elements to be retained (trees, service pits etc).
- Refer to ACHA Report by Sue Feary.
- Refer to Geotech report by Terra Insight.
- REF prepared by SCC.
- SCC Flood Certificate



Monoco Seat by Gossi - Woodgrain finish with arm rest

- Seat and bolts supplied by Council.
- Installed by Contractor. Fixed to mesh and bearers of boardwalk.

SURVEYED: DESIGNED: K. Murray July 2021 DRAWN: K. Murray July 2021 CAD FILE: 5384_05.dwg		CHECKED: M. Green 2/08/21 APPROVED: C. Exton 2/08/21 AUTHORISED: CLIENT:		ISSUES & AMENDMENTS 01 Issued for Review 02/08/21				CITY OF SHOALHAVEN Sanctuary Point - Bherwerre Wetland Boardwalk Construction Typical Boardwalk Details - Sheet 1 of 2		SCALE: As Shown Do not scale off drawings. Confirm all dimensions on site prior to start of construction. NOTE: This drawing, design and the copyright therein are the property of Shoalhaven City Council. It has been produced by the Assets & Works - City Design & Support Unit and must not be used, reproduced or copied wholly or in part without the permission of the City Design Unit Manager.		Trim File No. 64369E/4 Issued For Tender - PLAN REFERENCE - 5384_14	
--	--	---	--	---	--	--	--	--	--	--	--	--	--

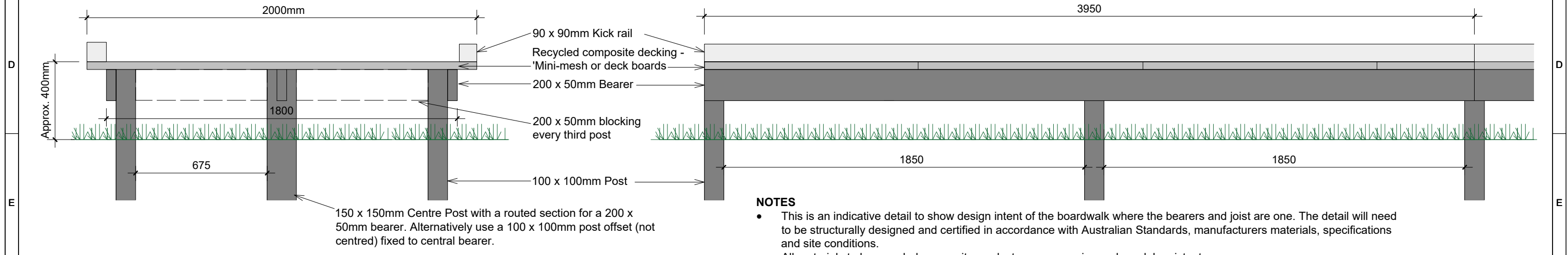


NOTES

- This is an indicative detail to show design intent of the boardwalk. The detail will need to be structurally designed and certified in accordance with Australian Standards, manufacturers materials, specifications and site conditions.
- All materials to be recycled composite products, non-corrosive and vandal resistant

3 Typical Section: Type 2 - Recycled Composite Plastic Elevated Boardwalk
Scale 1:10 for A1 size sheet, 1:20 for A3 size sheet

4 Typical Elevation: Type 2 - Recycled Composite Plastic Elevated Boardwalk
Scale 1:10 for A1 size sheet, 1:20 for A3 size sheet



NOTES

- This is an indicative detail to show design intent of the boardwalk where the bearers and joist are one. The detail will need to be structurally designed and certified in accordance with Australian Standards, manufacturers materials, specifications and site conditions.
- All materials to be recycled composite products, non-corrosive and vandal resistant.
- Presence of Acid Sulphate Soils. Posts to be screw pile or driven into ground.

5 Typical Section: Type 3 - Accessible Recycled Composite Plastic Elevated Boardwalk
Scale 1:10 for A1 size sheet, 1:20 for A3 size sheet

6 Typical Elevation: Type 3 - Accessible Recycled Composite Plastic Elevated Boardwalk
Scale 1:10 for A1 size sheet, 1:20 for A3 size sheet

GENERAL NOTES:

These Typical Details show indicative options for the proposed walkways Types 2&3. Refer to plan 5384_06. The exact type of application, length, level and position of the walkway shall be determined on site by the Contractor in consultation with the Project Manager.

The design, materials and construction of the walkway shall be in accordance with all relevant Australian Standards and the following criteria:

- All materials to be non-corrosive and vandal resistant
- Track Class 3 - In accordance with AS2156.2
- Live Load 3 KPA - In accordance with AS2156.2
- All fixings components to be stainless steel 316
- Ensure adequate soil and erosion controls are in place prior to any excavation work.
- Provide protection for all existing elements to be retained (trees, service pits etc).
- Refer to ACHA Report by Sue Feary.
- Refer to Geotech report by Terra Insight.
- REF prepared by SCC.
- SCC Flood Certificate

SURVEYED: DESIGNED: K. Murray July 2021 DRAWN: K. Murray July 2021 CAD FILE: 5384_05.dwg		CHECKED: M. Green 2/08/21 APPROVED: C. Exton 2/08/21 AUTHORISED: CLIENT:		ISSUES & AMENDMENTS 01 Issued for Review 02/08/21				CITY OF SHOALHAVEN Sanctuary Point - Bherwerre Wetland Boardwalk Construction Typical Boardwalk Details (Sheet 2 of 2)		SCALE: As Shown Do not scale off drawings. Confirm all dimensions on site prior to start of construction. NOTE: This drawing, design and the copyright therein are the property of Shoalhaven City Council. It has been produced by the Assets & Works - City Design & Support Unit and must not be used, reproduced or copied wholly or in part without the permission of the City Design Unit Manager.		Trim File No. 64369E/4 Issued For Tender - PLAN REFERENCE - 5384_15	
--	--	---	--	---	--	--	--	--	--	---	--	--	--