

PADDLECRAFT LAUNCHING FACILITY

SHORT ST, LAKE TABOURIE

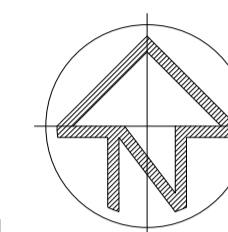
DETAILED DESIGN

SYDNEY OFFICE
Level 1, 83 - 89 Renwick Street, Redfern 2016
Tel (02) 8396 6565

SOUTH COAST OFFICE
49 Berry Street, Nowra NSW 2541
Tel (02) 4423 0566

WOLLONGONG OFFICE
Suite 3, 128/134 Crown Street, Wollongong NSW 2500
Tel (02) 4423 0566

www.miengineers.com



DRAWING INDEX

SCC	MIE
4519.02	DN220293 S001 COVER SHEET
4519.03	DN220293 S002 NOTES SHEET
4519.04	DN220293 S003 GENERAL ARRANGEMENT PLAN
4519.05	DN220293 S005 PADDLECRAFT LAUNCHING FACILITY
4519.06	DN220293 S010 FACILITY DETAILS



APPROXIMATE AREA OF WORKS

LOCALITY PLAN
N.T.S.



REVISION	AMENDMENTS	DATE	CKD	APP	CLIENT:	ARCHITECT:	PROJECT:	DESIGNED:	DRAWN:	SCALE:	SHEET SIZE:			
3	ISSUED FOR CONSTRUCTION	20.09.23	TS	TS	- APPROVED FOR USE - PLAN REFERENCE 4519.02	 SYDNEY OFFICE 83 - 89 Renwick Street, Redfern NSW 2016 Tel (02) 8396 6565 SOUTH COAST OFFICE 49 Berry Street, Nowra NSW 2541 Tel (02) 4423 0566 WOLLONGONG OFFICE Suite 3a, 128-134 Crown Street, Wollongong NSW 2500 Tel (02) 4423 0566	PADDLECRAFT LAUNCHING FACILITY				TS	SP	-	A1
2	ISSUED FOR CONSTRUCTION	18.08.23	TS	TS			SHORT ST, LAKE TABOURIE				DRAWING STATUS			DRAWING No.
1	ISSUED FOR CONSTRUCTION	07.03.23	TS	TS			DETAILED DESIGN				CONSTRUCTION			S001
B	ISSUED FOR REVIEW	20.12.22	TS	TS			DRAWING NAME:				PROJECT No.			REVISION:
A	ISSUED FOR REVIEW	23.11.22	TS	TS			COVER SHEET				DN220293			3

MIENGINEERS.COM

THIS DRAWING AND THE CONCEPTS CONTAINED THEREIN ARE THE PROPERTY OF MI ENGINEERS. NO UNAUTHORISED COPYING IS PERMITTED. NOTHING IS TO BE CONSTRUCTED BASED ON THIS DRAWING, OR PART OF THIS DRAWING, WITHOUT THE WRITTEN PERMISSION OF MI ENGINEERS. DRAWINGS TO BE READ IN CONJUNCTION WITH OTHER RELATED DESIGN DOCUMENTATION. FURTHERMORE, WHERE MIENGINEERS RELIES ON THE INFORMATION SUPPLIED BY OTHERS TO PRODUCE THE DESIGNS, WE ACCEPT NO LIABILITY FOR ERRORS, TO THE EXTENT THAT THE DESIGN HAS MADE RELIANCE ON THIS INFORMATION. MUST BE READ IN COLOUR

GENERAL NOTES

- MAXIMUM DEPTH OF FILL (OTHER THAN BELOW) SHALL BE 400mm DEEP AND WELL COMPACTED IN 150mm LAYERS (AFTER COMPACTION) BY A MECHANICAL ROLLER. THIS FILL SHALL BE MOIST DURING COMPACTION.
OR
APPROVED SOUND GRANULAR FILL (FREE OF MATERIAL THAT WOULD PRECLUDE COMPACTION) SHALL BE PLACED TO A MAXIMUM DEPTH OF 800mm. FILL IS TO BE PLACED IN 200mm LAYERS (AFTER COMPACTION) BY A VIBRATING PLATE OR VIBRATING ROLLER. WHERE DEPTH OF FILL EXCEEDS 800mm CONTROLLED FILL SHALL BE PLACED IN ACCORDANCE WITH AS3798 (SEE TABLE 5.1 MINIMUM RELATIVE COMPACTION - ITEM 2) AND CERTIFIED BY A SUITABLY QUALIFIED GEOTECHNICAL ENGINEER. IF SOFT SPOTS ARE ENCOUNTERED THEN ALL SOFT MATERIAL IS TO BE REMOVED AND THEN BACKFILLED WITH A SUITABLE MATERIAL COMPACTED AS SPECIFIED ABOVE.
- REMOVE ALL TOPSOIL, SOFT GROUND, GRASS AND OTHER DELETERIOUS MATERIAL FROM UNDER NEW FOUNDATIONS PRIOR TO CONSTRUCTION.
- THE BUILDER AND OWNER ARE TO ENSURE THAT SITE DRAINAGE AND FOUNDATION MAINTENANCE IS CARRIED OUT IN ACCORDANCE WITH APPENDIX B OF AS2870 AS ENCLOSED IN THE SPECIFICATION. NOTE: DAMAGE CAN BE EXPECTED IF THE RECOMMENDATIONS OF APPENDIX B ARE NOT COMPLIED WITH.
- THE ENGINEER SHALL VIEW AND APPROVE ALL CONCRETE WORK PRIOR TO THE POURING OF ANY CONCRETE.
- THE INFORMATION CONTAINED ON THESE DRAWINGS IS FOR STRUCTURAL PURPOSES ONLY. IN ALL OTHER MATTERS, THE APPROVED ARCHITECTURAL DRAWING SHALL TAKE PRECEDENCE. ALL DISCREPANCIES SHALL BE REFERRED TO THE ENGINEER PRIOR TO PROCEEDING WITH CONSTRUCTION.
- ALL WORK SHALL BE PROTECTED FROM TERMITE ATTACK IN ACCORDANCE WITH AS3660.1 AND LOCAL AUTHORITY REQUIREMENTS.
- DURING CONSTRUCTION, THE STRUCTURE SHALL BE MAINTAINED IN A STABLE CONDITION AND NO PART SHALL BE OVERSTRESSED. THE DESIGN INSTALLATION AND MAINTENANCE OF ALL TEMPORARY PROPPING, BRACING AND SHORING SHALL BE PROVIDED BY THE CONTRACTOR TO KEEP THE WORKS AND EXCAVATIONS STABLE AT ALL TIMES. THE COST OF ALL SUCH WORK SHALL BE DEEMED TO BE INCLUDED IN THE CONTRACTORS TENDER.
- ON CLASS H OR CLASS E SITES, PLUMBING AND DRAINAGE MUST BE CONSTRUCTED IN ACCORDANCE WITH THE RELEVANT SPECIFICATION.
- THE BUILDER SHALL ENSURE THAT THE GROUND SURROUNDING THE STRUCTURE SLOPES AWAY FROM THE BUILDING WITH IMPERVIOUS MATERIALS.
- ALL WORKS CONDUCTED SHALL BE IN ACCORDANCE WITH THE CURRENT EDITION OF THE RELEVANT AUSTRALIAN STANDARDS (INCLUDING ALL AMENDMENTS) AND THE CURRENT EDITION OF THE BUILDING CODE OF AUSTRALIA.
- PROVIDE FINISHES AND FIXTURES THAT ALLOW FOR RELATIVE MOVEMENT BETWEEN OLD AND NEW STRUCTURES, TYPICAL.
- WHERE ROCK IS ENCOUNTERED THE REMAINDER OF THE FOOTING SYSTEM SHALL BE FOUNDED ON ROCK AS APPROVED BY THE ENGINEER.
- IN BUILDINGS WITH MASONRY AND/OR CONCRETE SURFACES EXPOSED TO SALINE SOILS OR ACID SULPHATE SOILS, THE CONCRETE RAFT, SLAB, STRIP OR PAD FOOTING SHALL BE PROTECTED FROM THE AGGRESSIVE SOIL OR GROUNDWATER BY:
- ISOLATION OF THE CONCRETE OR MASONRY FROM THE AGGRESSIVE SOIL BY INSTALLING 0.5mm THICK DAMP-PROOFING MATERIAL IN ACCORDANCE WITH AS2870 AND AS2904.
- THE CONTRACTOR IS TO ENSURE THAT ALL WORK IS DONE IN A SAFE MANNER AND IN ACCORDANCE WITH ALL APPLICABLE SAFEWORK NSW REGULATIONS AND ANY OTHER APPLICABLE STATUTORY AUTHORITY REGULATIONS.
- THE OWNERS ATTENTION IS DRAWN TO THE ACCEPTABLE LEVELS OF FOUNDATION PERFORMANCE AS OUTLINED BY AS 2870. ACCORDINGLY CATEGORY 1 OR 2 DAMAGE MAY BE EXPECTED UNDER SOME CONDITIONS. SHOULD A HIGHER LEVEL OF CRACK CONTROL BE REQUIRED THEN THE ENGINEER SHOULD BE NOTIFIED SO THAT THIS CAN BE INCORPORATED INTO THE DESIGN.
- IT IS THE CONTRACTOR'S RESPONSIBILITY TO CHECK THE LOCATION OF ALL EXISTING AND PROPOSED SERVICES PRIOR TO START OF CONSTRUCTION AND TO ALLOW TO ADJUST THESE AS REQUIRED TO PROVIDE FOR THE INTENT OF THE DESIGN.
- WHERE MIENGINEERS RELIES ON THE INFORMATION SUPPLIED BY OTHERS TO PRODUCE THE DESIGNS, WE ACCEPT NO LIABILITY FOR ERRORS, TO THE EXTENT THAT THE DESIGN HAS MADE RELIANCE ON THIS INFORMATION.

CONCRETE NOTES

- ALL WORKMANSHIP AND MATERIALS SHALL COMPLY WITH THE CURRENT EDITION OF AS3600 AND AS2870 FOR RESIDENTIAL CONSTRUCTION.
- CONCRETE SHALL CONFORM TO THE FOLLOWING UNLESS NOTED OTHERWISE:
 - CEMENT TYPE GB TO AS3972
 - SLUMP OF 80mm ±10mm
 - MAXIMUM AGGREGATE SIZE OF 20mm
 - MAXIMUM DRYING SHRINKAGE STRAIN (TO AS1012 PART 13) SHALL NOT EXCEED 1000 MICROSTRAIN AT 56 DAYS UNLESS DESIGNATED AS SHRINKAGE LIMITED (SL)
 - STRENGTH GRADES FOR NORMAL CLASS (N) OR SPECIAL CLASS (S) AS SHOWN IN GENERAL NOTES
- UNLESS NOTED OTHERWISE, THE CONCRETE MIX DESIGN SHALL MEET THE SPECIFICATION AND THE FOLLOWING CRITERIA:

ELEMENT	GRADE (MPa)	MIN. CEMENT CONTENT	W/C RATIO
FOOTINGS	N50	300	0.45
- CLEAR CONCRETE COVER TO REINFORCEMENT SHALL BE AS FOLLOWS U.N.O.:

ELEMENT	TOP (mm)	BOTTOM (mm)	SIDE (mm)
FOOTINGS	65	65	65
- THE SIZES OF THE CONCRETE ELEMENTS DO NOT INCLUDE THICKNESSES OF ANY APPLIED FINISHES.
- ALL CONCRETE SHALL BE COMPACTED ADEQUATELY IN ACCORDANCE WITH AS3600 BY THE USE OF A MECHANICAL VIBRATOR.
- ALL CONCRETE SHALL BE CURED IN ACCORDANCE WITH AS3600.
- BRICKWORK SHALL BE ARTICULATED CORRESPONDING TO THE LOCATIONS OF ANY KEYED JOINTS.
- REINFORCEMENT SYMBOLS:
N - DENOTES GRADE D500N DEFORMED BARS TO AS4671
R - DENOTES GRADE R250N ROUND BARS TO AS4671
SL - DENOTES WELDED GRADE D500L REINFORCING FABRIC TO AS4671
- REINFORCEMENT IS REPRESENTED DIAGRAMMATICALLY AND NOT NECESSARILY IN TRUE PROJECTION.
- SPLICES IN REINFORCEMENT SHALL BE MADE ONLY IN POSITIONS SHOWN OR OTHERWISE APPROVED IN WRITING BY THE ENGINEER. LAPS SHALL BE IN ACCORDANCE WITH AS3600 AND NOT LESS THAN THE DEVELOPMENT LENGTH FOR EACH BAR.

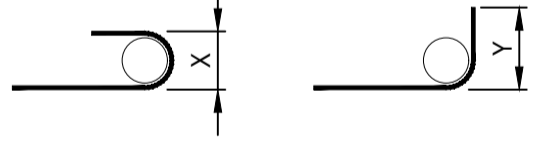
REINFORCEMENT LAP LENGTHS (LESS THEN 300mm OF CONCRETE BELOW THE BAR)							
BAR SIZE							
N12	N16	N20	N24	N28	N32	N36	N40
500	750	1000	1400	1700	2000	2300	2750

REINFORCEMENT LAP LENGTHS (MORE THEN 300mm OF CONCRETE BELOW THE BAR)							
BAR SIZE							
N12	N16	N20	N24	N28	N32	N36	N40
650	1000	1300	1800	2200	2600	3000	3600

12. MINIMUM OVERALL DIMENSIONS OF 180° HOOKS AND 90° COGS MAY BE NO SMALLER THEN THE FOLLOWING TABLE:

180° HOOKS OVERALL DIMENSION (X)				
PIN DIA.	BAR NOMINAL SIZE (D)			
	12	16	20	24
3D	60	-	-	-
4D	70	100	120	140

90° COGS OVERALL DIMENSION (Y)				
PIN DIA.	BAR NOMINAL SIZE (D)			
	12	16	20	24
3D	160	-	-	-
4D	170	200	240	280



STRIP FOOTING NOTES

- ALL WORKMANSHIP AND MATERIALS SHALL COMPLY WITH THE CURRENT EDITION OF AS3600 AND AS2870 FOR RESIDENTIAL CONSTRUCTION.
- ALL STRIP FOOTINGS SHALL BE FOUNDED ON NATURAL MATERIAL WITH AT LEAST 100kPa BEARING CAPACITY TO THE ENGINEERS APPROVAL, OR ARE TO BE SUPPORTED ON PIERS AS DETAILED.
- WHERE STRIP FOOTINGS DO NOT BEAR DIRECTLY ON NATURAL MATERIAL OF 100kPa BEARING CAPACITY OR BEAR UPON FILL 400mm DEEP OR GREATER, THEN PIERS SHALL BE CONSTRUCTED AS SHOWN ON THE PLAN (OR AS DETERMINED NECESSARY BY THE ENGINEER AT THE TIME OF THE VIEWING).
- THE ENGINEER SHALL VIEW AND APPROVE ALL WORK PRIOR TO POURING CONCRETE.

COMPOSITE FIBRE NOTES

- ALL MATERIAL AND WORKMANSHIP SHALL COMPLY WITH THE MANUFACTURERS WORK INSTRUCTIONS AND QUALITY ASSURANCE STANDARDS.
- UNLESS OTHERWISE NOTES OR APPROVED, COMPOSITE MATERIALS FOR USE IN THIS PROJECT SHALL BE MANUFACTURED FROM ECR GLASS AND VINYL ESTER RESIN CONFORMING WITH ISO 9001 STANDARD.
- ALL MEMBERS SHALL BE IN SOUND CONDITION FREE FROM PITTING, DE-LAMINATIONS AND OTHER DEFECTS WHICH ARE LIKELY TO IMPAIR THE STRUCTURAL CAPACITY OF THE MEMBERS.
- ALL COMPOSITE MEMBER PARTS OF THE HANDRAIL SYSTEM SHALL BE PAINTED USING URETHANE COATING TO PROVIDE EXTRA UV-RESISTENCE. COATING PROCEDURE SHALL BE IN ACCORDANCE WITH THE MANUFACTURERS GUIDE APPLICATION OF PROTECTIVE COATINGS.
- AT ALL FACTORY AND AT SITE DRILLED HOLES, AN APPROVED ANTICRUSH INSERT SHALL BE PUSHED TO THE CORRECT PLACEMENT. THIS PREVENTS CRUSHING OF THE SECTION AND PROVIDES A LARGE BEARING AREA FOR STRUCTURAL BOLTS.
- AN ALTERNATIVE METHOD FOR ANTI-CRUSHING IS TO BOLT THROUGH ONE SIDE WALL OF THE PROFILE ONLY. TO PROVIDE ACCESS TO THIS BOLT, A LARGE OVERSIZED HOLE IN THE WALL THAT IS NOT BEING BOLTED IS REQUIRED.
- USE OF A WATERPROOFING COMPOUND TO SEAL ANY END CUT FIBRES, AS A RESULT OF DRILLING OR CUTTING THE COMPOSITE FIBRE PROFILES IS REQUIRED.

EXISTING AND DECOMMISSIONED SERVICES

- ENSURE DBYD IS CARRIED OUT
- CONTRACTOR IS TO LOCATE AND BE RESPONSIBLE FOR ENSURING ALL SUB-CONTRACTORS ARE AWARE OF EXISTING SERVICES AND TO PROVIDE SUFFICIENT PROTECTION
- EARTHING OF ELECTRICAL INSTALLATIONS
- REMOVE AS REQUIRED IN ACCORDANCE WITH WORK COVER CODES OF PRACTISE

PLANT AND MACHINERY

- WORKING IN PROXIMITY TO MACHINERY ENSURE SWMS FOR WORKING IN PROXIMITY TO PLANT
- ENSURE CLEAR PATHS OF MOVEMENT
- SUITABLE PPE AND EQUIPMENT - EAR PROTECTION, HIGH VIS, SPOTTERS, RADIOS
- SAFE WORKING AREA AND SUITABLE BARRIERS / DELINEATION
- SUITABLE ACCESS FOR MACHINERY, DELIVERIES AND REMOVAL OF MATERIALS
- TOWER CRANE LOCATIONS AND FOUNDATIONS DESIGNED BY SUITABLY QUALIFIED PERSON

HAZARDOUS MATERIALS AND MATERIAL HANDLING

- DEMOLITION OF EXISTING STRUCTURES (HAZARDOUS MATERIALS REPORT) IE ASBESTOS, LEAD PAINT - ENSURE SWMS ARE IN PLACE WHEN REQUIRED AND WORKERS ARE QUALIFIED AND/OR TRAINED FOR EACH TASK.
- PRESENCE OF HAZARDOUS MATERIALS IN THE EXISTING GROUND - MAY BE DISTURBED DURING EARTHWORKS
- USE OF HAZARDOUS MATERIALS IN CONSTRUCTION - ENSURE WORKERS ARE FAMILIAR WITH MATERIAL DATA SHEETS (MDS) AND SWMS ASSOCIATED WITH MATERIALS AND PRODUCTS PROPOSED FOR USE
- LARGE HEAVY MEMBERS THAT CANNOT BE CRANED -BUILDER CAN REQUEST SPLICE DETAILS TO EASE CONSTRUCTABILITY AND SAFE INSTALLATION
- CONSIDER THE WORKING ENVIRONMENT AND SURROUNDING PROXIMITY TO POTENTIALLY HAZARDOUS MATERIALS
- ENSURE SUFFICIENT VENTILATION FOR WORKS BEING PERFORMED

STRUCTURAL SAFETY

- TEMPORARY SHORING OF EXCAVATIONS AS REQUIRED BY BUILDER WHERE EXCAVATIONS ARE REQUIRED IN PROXIMITY TO EXISTING STRUCTURES AND SERVICES CONSULT THE GEOTECHNICAL ENGINEER
- TEMPORARY BRACING OF STRUCTURES DURING CONSTRUCTIONS
- REASONABLE CONSTRUCTION LOADS ALLOWED FOR ON SLABS AND FRAMES (CONFIRM WITH ENGINEER FOR SPECIFIC VALUE)
- PROVIDE FALL RESTRAINTS AND BARRIERS AS REQUIRED
- WORKCOVER CODES OF PRACTISE FOR CONSTRUCTION OF STRUCTURES

EARTHWORKS

- APPROPRIATE BARRIERS SHOULD BE INSTALLED AROUND ALL EXCAVATIONS.
- BATTERS AND BENCHING SHOULD OCCUR ON EXCAVATIONS TO MINIMISE THE RISK OF COLLAPSE AND ENGULFMENT.
- TEMPORARY SHORING SHOULD BE INSTALLED AS REQUIRED BY THE BUILDER AND DESIGNED BY AN ENGINEER AS NECESSARY.
- CONFINED SPACES - ENSURE ANY WORKERS ARE CARRYING A CURRENT TICKET FOR SPECIFIED WORKS AND CARRY OUT WORK IN ACCORDANCE WITH WORK COVER CODES OF PRACTICE.
- EXCAVATION IN PROXIMITY TO EXISTING BUILDINGS AND SERVICES TAKE CARE NOT TO UNDERMINE, ENGAGE SPECIALIST UNDERPINNING CONTRACTORS AS REQUIRED IF IN DOUBT ABOUT ANY COMPONENT OF A TASK, ASK THE SUPERVISOR.
- IF YOU FEEL A TASK IS NOT SAFE TO CARRY OUT, DO NOT START WORK UNTIL APPROPRIATE MEASURES HAVE BEEN TAKEN TO MAKE THE TASK SAFE OR APPROPRIATE TRAINING HAS BEEN PROVIDED. MAKE SURE YOU AND FELLOW WORKERS ARE FAMILIAR WITH THE MEASURES (WORK COVER CODES, SWMS, MDS) IN PLACE TO MAKE THE TASK AS SAFE AS POSSIBLE. IF YOU SEE ANY UNSAFE PRACTISES TAKING PLACE, REPORT TO A SUPERVISOR, YOUR HEALTH AND SAFETY IS YOUR RESPONSIBILITY.

ACCESS AND SAFE MOVEMENT

- LIMITING PUBLIC ACCESS
- ENSURE SUITABLE FENCING TO KEEP PUBLIC OUT
- DELINEATE BETWEEN WORK AREAS AND PATHS OF TRAVEL
- PROVIDE SUFFICIENT TRAFFIC CONTROL AND BARRIERS TO SAFELY SEPARATE WORKERS AND MEMBERS OF PUBLIC FROM VEHICLES AND PLANT FROM WORKERS AND PUBLIC
- APPROPRIATE BARRIERS AND FALL PREVENTION NEAR EDGES AND EXCAVATIONS
- SAFE CROSSINGS AND EXCLUSION ZONES
- PLANNED EMERGENCY EXIT ROUTES AND ASSEMBLY AREA


SAFE WORKING ENVIRONMENT

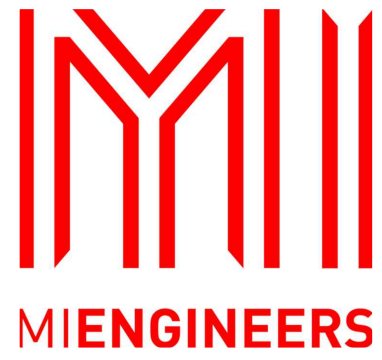
- SAFE CLEAN/ CLEAR ACCESS TO SITE AND AROUND THE SITE
- PPE SHALL BE USED FOR NOISY ACTIVITIES AND OR WORKING IN PROXIMITY TO PLANT
- WORKING AT HEIGHTS PROVIDE APPROPRIATE SCAFFOLDING, TEMPORARY PLATFORMS AND FALL RESTRAINT (IF WORKING AT HEIGHTS ABOVE 2m)
- SUFFICIENT WATER SUPPLY AND AMENITIES ON SITE
- SLIPS AND TRIPS - FINISHED SURFACES APPROPRIATELY SLIP RESISTANCE, STEPS HIGHLIGHTED
- SURROUNDING AREA SHOULD BE CONSIDERED DURING WRITING OF SWMS - WORKING IN BUSHLAND, IN CLOSE TO EXPLOSIVE CHEMICALS (I.E. PETROL STATIONS ETC)
- MANUAL TASKS SHOULD BE CARRIED OUT IN A SAFE MANNER, BENDING KNEES, NOT LIFTING MORE THAN CAPABLE OF, USING MECHANICAL HELP AS REQUIRED
- CHECK FOR OVERHEAD POWERLINES AND CLEARLY HIGHLIGHT THEIR LOCATION AND PROTECT WORKERS AND LINES FROM EACH OTHER
- WORKING OVER OR IN PROXIMITY TO WATER - SUITABLE PROTECTION PROVIDED TO PREVENT FALLS, SUITABLE PPE PROVIDED WHEN WORKING OVER OR NEXT TO BODIES OF WATER
- APPROPRIATE FALL RESTRAINTS SHOULD BE PROVIDED WHEN WORKING IN PROXIMITY TO CONTAMINATED WATER SUCH AS SEWAGE (HAZARDOUS MATERIALS)

SOFT SPOT NOTES

- ALL SOFT SPOTS SHALL HAVE ALL LOOSE MATERIAL REMOVED AND SHALL BE BACK FILLED WITH SUITABLE MATERIAL AND COMPACTED AS INDICATED IN NOTE 1 OF GENERAL NOTES.

REVISION	AMENDMENTS	DATE	CKD	APP
3	ISSUED FOR CONSTRUCTION	20.09.23	TS	TS
2	ISSUED FOR CONSTRUCTION	18.08.23	TS	TS
1	ISSUED FOR CONSTRUCTION	07.03.23	TS	TS
B	ISSUED FOR REVIEW	20.12.22	TS	TS
A	ISSUED FOR REVIEW	23.11.22	TS	TS

CLIENT: - APPROVED FOR USE -

 PLAN REFERENCE
4519.03

ARCHITECT:


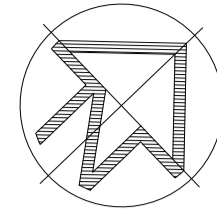
SYDNEY OFFICE
 83 - 89 Renwick Street,
 Redfern NSW 2016
 Tel (02) 8396 6565
 SOUTH COAST OFFICE
 49 Berry Street, Nowra NSW 2541
 Tel (02) 4423 0566
 WOLLONGONG OFFICE
 Suite 3a, 128-134 Crown Street,
 Wollongong NSW 2500
 Tel (02) 4423 0566

THIS DRAWING AND THE CONCEPTS CONTAINED THEREIN ARE THE PROPERTY OF MI ENGINEERS. NO UNAUTHORISED COPYING IS PERMITTED. NOTHING IS TO BE CONSTRUCTED BASED ON THIS DRAWING, OR PART OF THIS DRAWING, WITHOUT THE WRITTEN PERMISSION OF MI ENGINEERS. DRAWINGS TO BE READ IN CONJUNCTION WITH OTHER RELATED DESIGN DOCUMENTATION. FURTHERMORE, WHERE MIENGINEERS RELIES ON THE INFORMATION SUPPLIED BY OTHERS TO PRODUCE THE DESIGNS, WE ACCEPT NO LIABILITY FOR ERRORS, TO THE EXTENT THAT THE DESIGN HAS MADE RELIANCE ON THIS INFORMATION. MUST BE READ IN COLOUR

PROJECT: **PADDLECRAFT LAUNCHING FACILITY**
SHORT ST, LAKE TABOURIE
DETAILED DESIGN
 DRAWING NAME: **NOTES SHEET**



DESIGNED:	DRAWN:	SCALE:	SHEET SIZE:
TS	SP	-	A1
DRAWING STATUS		DRAWING No.	
CONSTRUCTION		S002	
PROJECT No.	REVISION:		
DN220293	3		



LEGEND

EXISTING PATH

NOTE:
REFER TO DN220293/S002 FOR CONSTRUCTION NOTES

GEOTECHNICAL NOTE:
REFER TO GEOTECHNICAL ASSESSMENT REPORT UNDERTAKEN BY GEOFIRST JOB NO: GF1571-A DATED: 1/11/2022

GENERAL ARRANGEMENT PLAN
SCALE 1:50



REVISION	AMENDMENTS	DATE	CKD	APP
3	ISSUED FOR CONSTRUCTION	20.09.23	TS	TS
2	ISSUED FOR CONSTRUCTION	18.08.23	TS	TS
1	ISSUED FOR CONSTRUCTION	07.03.23	TS	TS

CLIENT: - APPROVED FOR USE -

 PLAN REFERENCE
4519.04

ARCHITECT:

MIENGINEERS

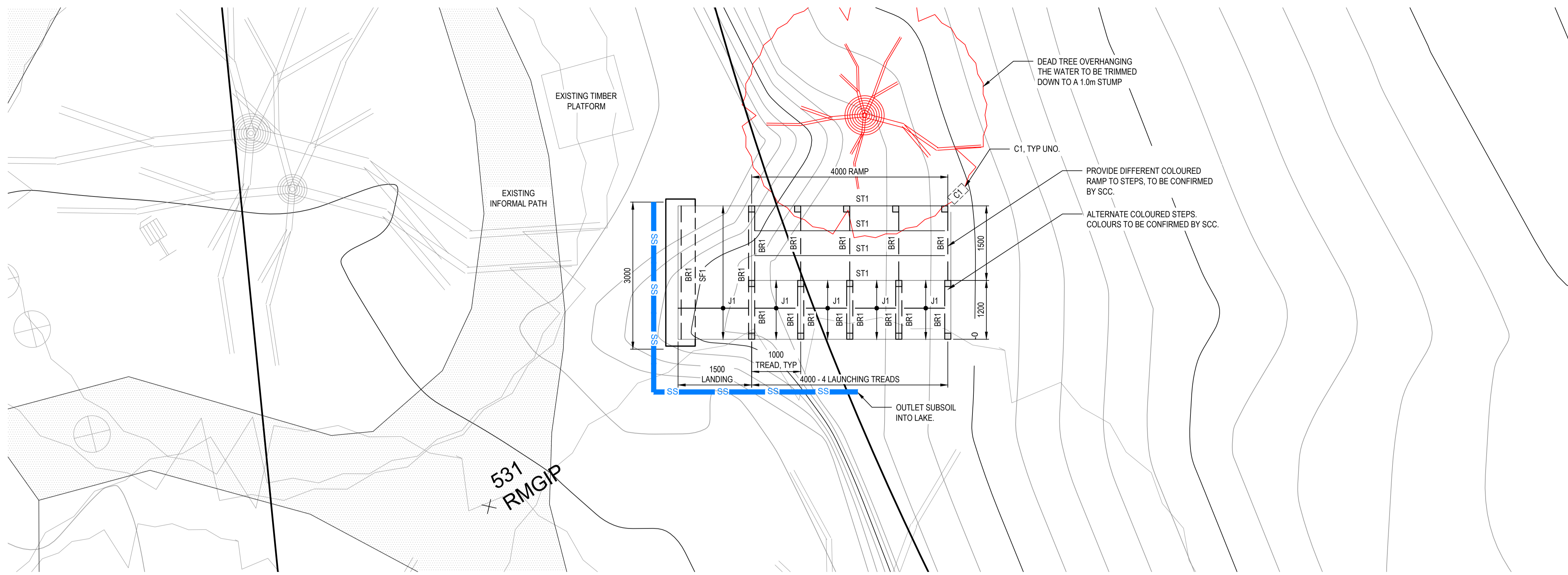
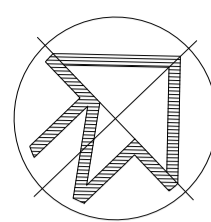
SYDNEY OFFICE
83 - 89 Renwick Street,
Redfern NSW 2016
Tel (02) 8396 6565
 SOUTH COAST OFFICE
49 Berry Street, Nowra NSW 2541
Tel (02) 4423 0566
 WOLLONGONG OFFICE
Suite 3a, 128-134 Crown Street,
Wollongong NSW 2500
Tel (02) 4423 0566

THIS DRAWING AND THE CONCEPTS CONTAINED THEREIN ARE THE PROPERTY OF MI ENGINEERS. NO UNAUTHORISED COPYING IS PERMITTED. NOTHING IS TO BE CONSTRUCTED BASED ON THIS DRAWING, OR PART OF THIS DRAWING, WITHOUT THE WRITTEN PERMISSION OF MI ENGINEERS. DRAWINGS TO BE READ IN CONJUNCTION WITH OTHER RELATED DESIGN DOCUMENTATION. FURTHERMORE, WHERE MIENGINEERS RELIES ON THE INFORMATION SUPPLIED BY OTHERS TO PRODUCE THE DESIGNS, WE ACCEPT NO LIABILITY FOR ERRORS, TO THE EXTENT THAT THE DESIGN HAS MADE RELIANCE ON THIS INFORMATION. MUST BE READ IN COLOUR

PROJECT:
PADDLECRAFT LAUNCHING FACILITY
SHORT ST, LAKE TABOURIE
DETAILED DESIGN
 DRAWING NAME:
GENERAL ARRANGEMENT PLAN

DESIGNED:	DRAWN:	SCALE:	SHEET SIZE:
TS	SP	1:50	A1
DRAWING STATUS		DRAWING No.	
CONSTRUCTION		S003	
PROJECT No.		REVISION:	
DN220293		3	

DO NOT SCALE

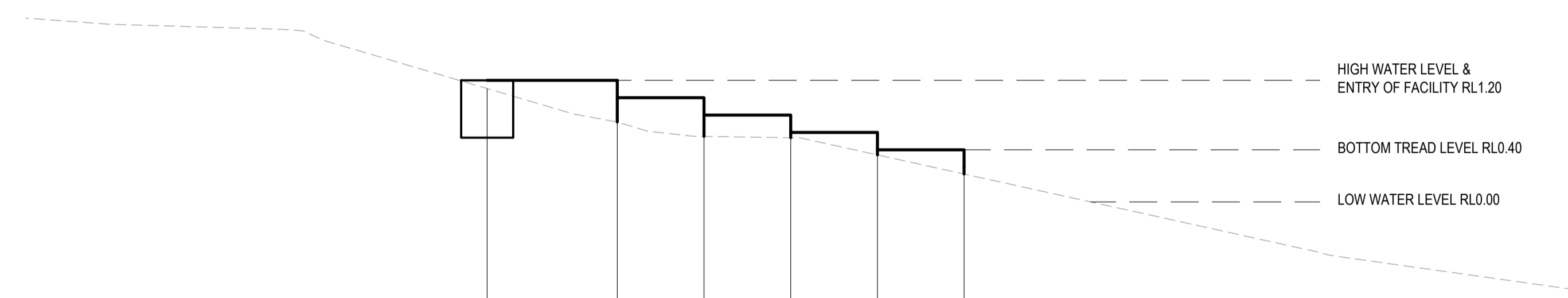


LEGEND	
	COLUMN UNDER
	SUBSOIL DRAIN
	EXISTING PATH

NOTE:
REFER TO DN220293/S002 FOR CONSTRUCTION NOTES

GEOTECHNICAL NOTE:
REFER TO GEOTECHNICAL ASSESSMENT REPORT UNDERTAKEN BY GEOFIRST JOB NO: GF1571-A DATED: 1/11/2022

PADDLECRAFT LAUNCHING FACILITY PLAN
SCALE 1:50



VERTICAL GEOMETRY GRADE (%)	0%				
VERTICAL GEOMETRY LENGTH (m)	1.50	1.00	1.00	1.00	1.00
	LANDING	TREAD	TREAD	TREAD	TREAD
DATUM RL	= -3.80				
FINISHED SURFACE LEVEL	1.20	1.00	0.80	0.60	0.40
EXISTING SURFACE LEVEL	1.11	0.72	0.56	0.54	0.54
CONTROL LINE CHAINAGE	0.00	1.50	2.50	3.50	4.50
				5.50	

A1 SCALE: H 1:50 V 1:50
LONGITUDINAL SECTION

PADDLECRAFT LAUNCHING FACILITY LONG SECTION
SCALE 1:50



REVISION	AMENDMENTS	DATE	CKD	APP
3	ISSUED FOR CONSTRUCTION	20.09.23	TS	TS
2	ISSUED FOR CONSTRUCTION	18.08.23	TS	TS
1	ISSUED FOR CONSTRUCTION	07.03.23	TS	TS
B	ISSUED FOR REVIEW	20.12.22	TS	TS
A	ISSUED FOR REVIEW	23.11.22	TS	TS

CLIENT: - APPROVED FOR USE -

PLAN REFERENCE: 4519.05

ARCHITECT:

SYDNEY OFFICE
83 - 89 Renwick Street,
Redfern NSW 2016
Tel (02) 8396 6565
SOUTH COAST OFFICE
49 Berry Street, Nowra NSW 2541
Tel (02) 4423 0566
WOLLONGONG OFFICE
Suite 3a, 128-134 Crown Street,
Wollongong NSW 2500
Tel (02) 4423 0566

THIS DRAWING AND THE CONCEPTS CONTAINED THEREIN ARE THE PROPERTY OF MI ENGINEERS. NO UNAUTHORISED COPYING IS PERMITTED. NOTHING IS TO BE CONSTRUCTED BASED ON THIS DRAWING, OR PART OF THIS DRAWING, WITHOUT THE WRITTEN PERMISSION OF MI ENGINEERS. DRAWINGS TO BE READ IN CONJUNCTION WITH OTHER RELATED DESIGN DOCUMENTATION. FURTHERMORE, WHERE MI ENGINEERS RELIES ON THE INFORMATION SUPPLIED BY OTHERS TO PRODUCE THE DESIGNS, WE ACCEPT NO LIABILITY FOR ERRORS, TO THE EXTENT THAT THE DESIGN HAS MADE RELIANCE ON THIS INFORMATION. MUST BE READ IN COLOUR

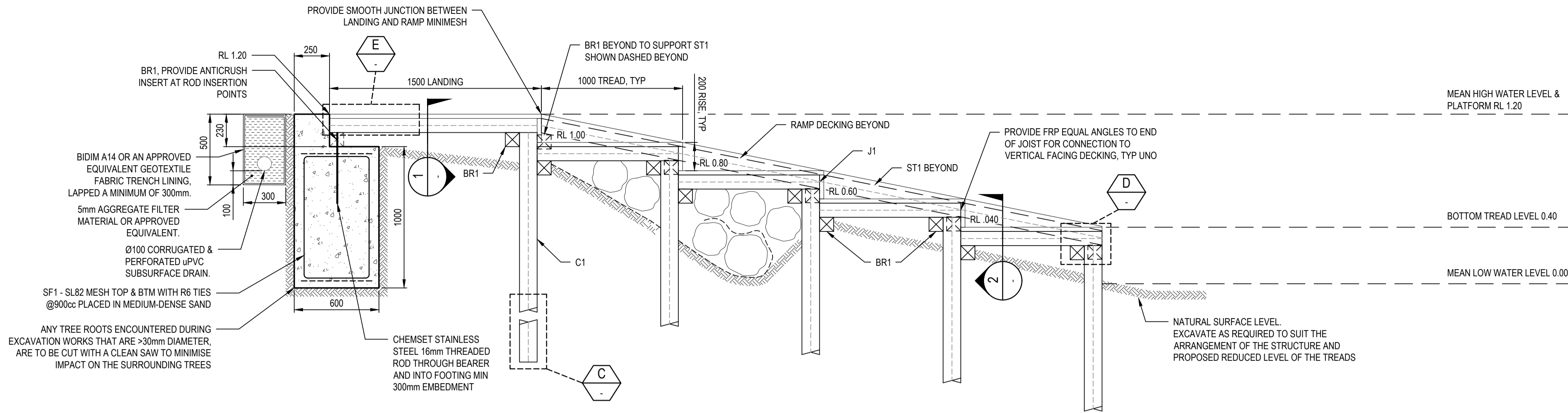
PROJECT: PADDLECRAFT LAUNCHING FACILITY
SHORT ST, LAKE TABOURIE
DETAILED DESIGN
DRAWING NAME: PADDLECRAFT LAUNCHING FACILITY

DESIGNED:	DRAWN:	SCALE:	SHEET SIZE:
TS	SP	1:50	A1
DRAWING STATUS		DRAWING No.	
CONSTRUCTION		S005	
PROJECT No.		REVISION:	
DN220293		3	

NOTE:
REFER TO DN220293/S002 FOR CONSTRUCTION NOTES

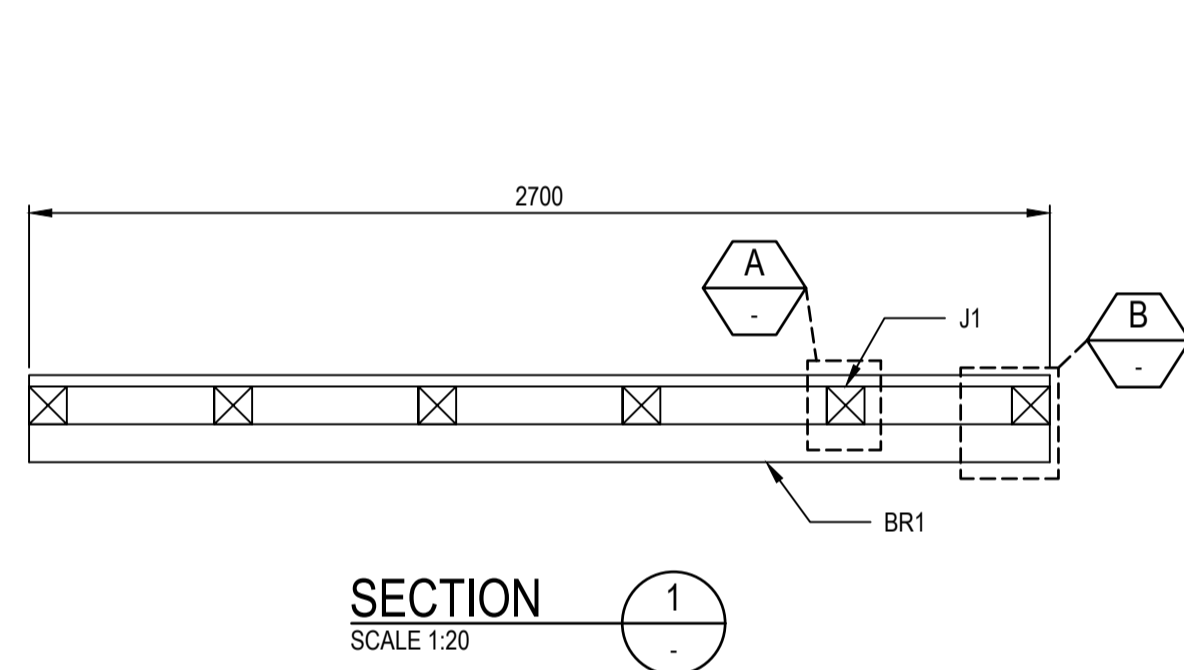
GEOTECHNICAL NOTE:
REFER TO GEOTECHNICAL ASSESSMENT REPORT UNDERTAKEN BY GEOFIRST JOB NO: GF1571-A DATED: 1/11/2022

CONSTRUCTION NOTE:
PROVIDE ANTICRUSH INSERT TO MANUFACTURER'S SPECIFICATION. PROVIDE END CAPS TO ALL MEMBERS.

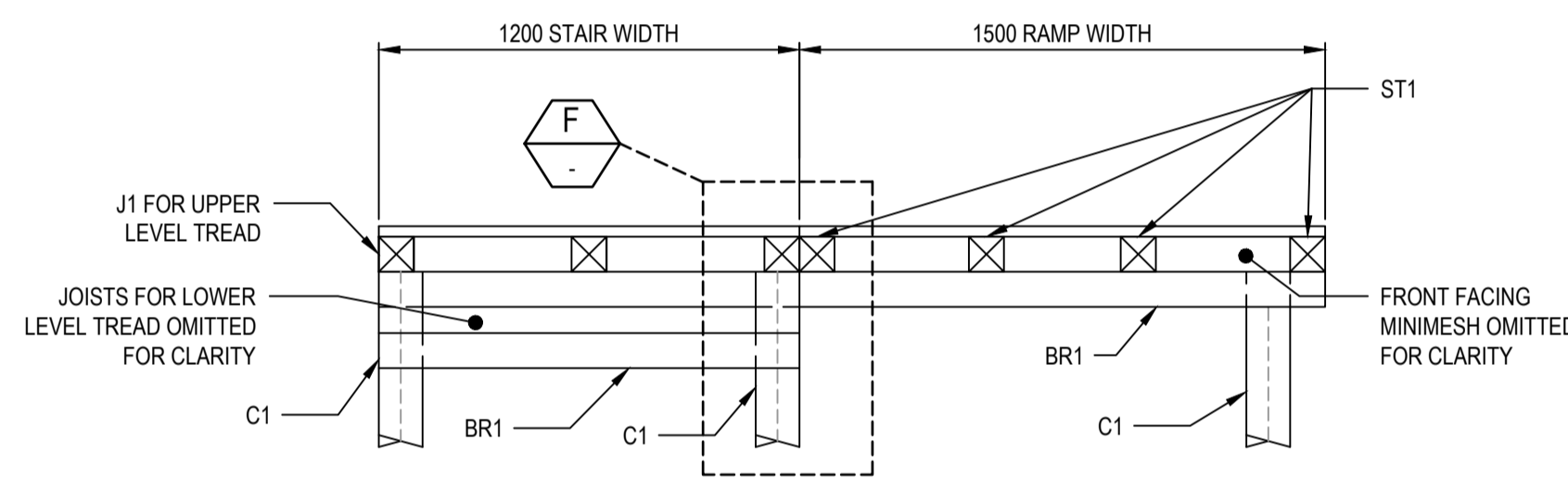


MEMBER SCHEDULE		
TAG	DESCRIPTION	MEMBER
C1	COLUMN	125x125x6.4 WAGNERS COMPOSITE FIBRE HOLLOW SECTION - BLACK FINISH
BR1	BEARER	100x100x5.2 WAGNERS COMPOSITE FIBRE HOLLOW SECTION - BLACK FINISH
J1	JOIST @ 600 MAX CRS	100x100x5.2 WAGNERS COMPOSITE FIBRE HOLLOW SECTION - BLACK FINISH
ST1	STRINGER	100x100x5.2 WAGNERS COMPOSITE FIBRE HOLLOW SECTION - BLACK FINISH

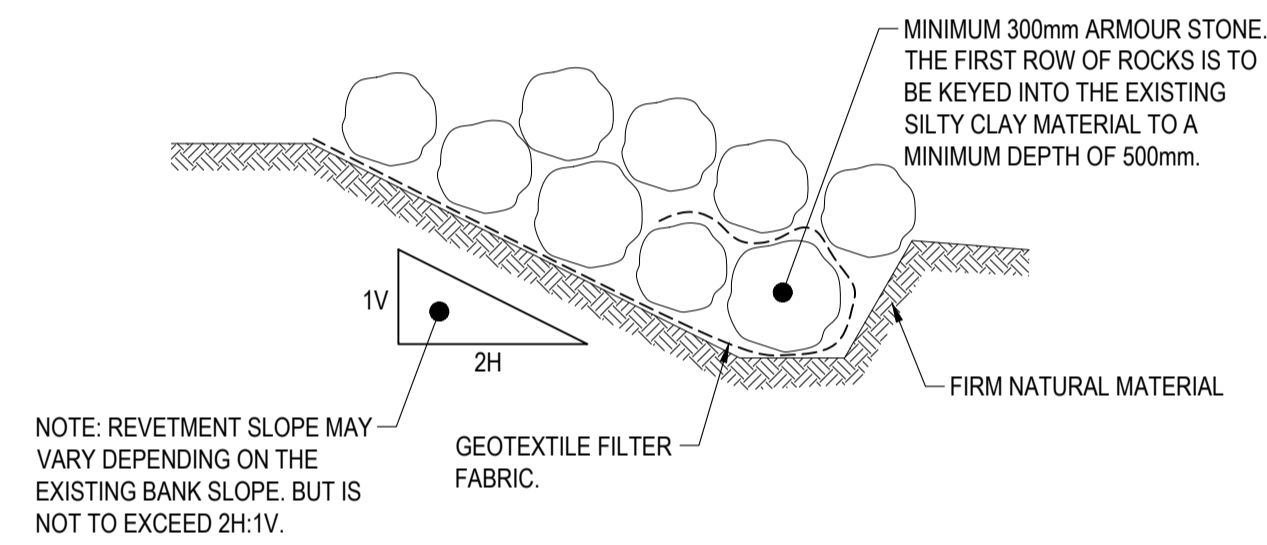
PADDELCRAFT LAUNCHING FACILITY ELEVATION
SCALE 1:20



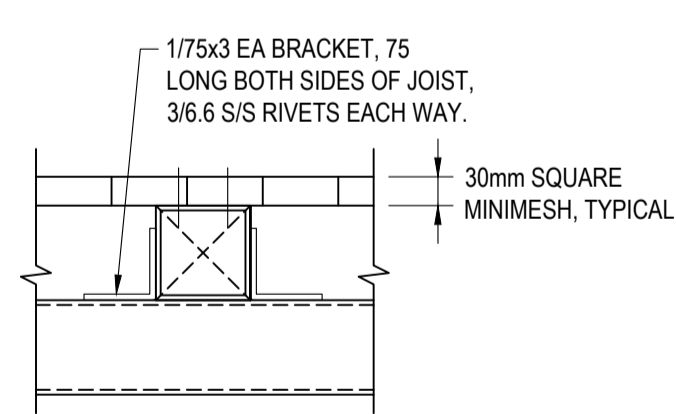
SECTION 1
SCALE 1:20



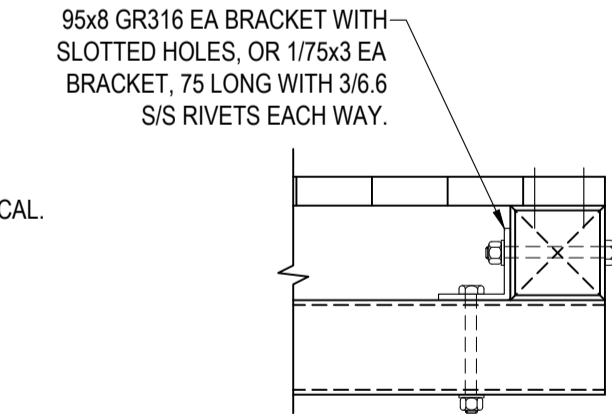
SECTION 2
SCALE 1:20



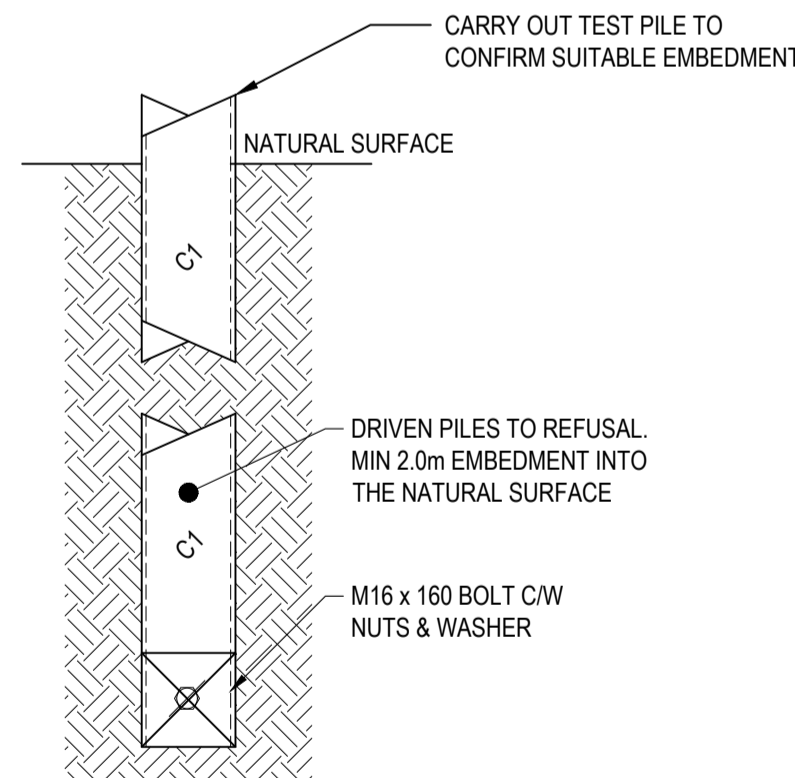
TYPICAL REVETMENT DETAIL
SCALE 1:20



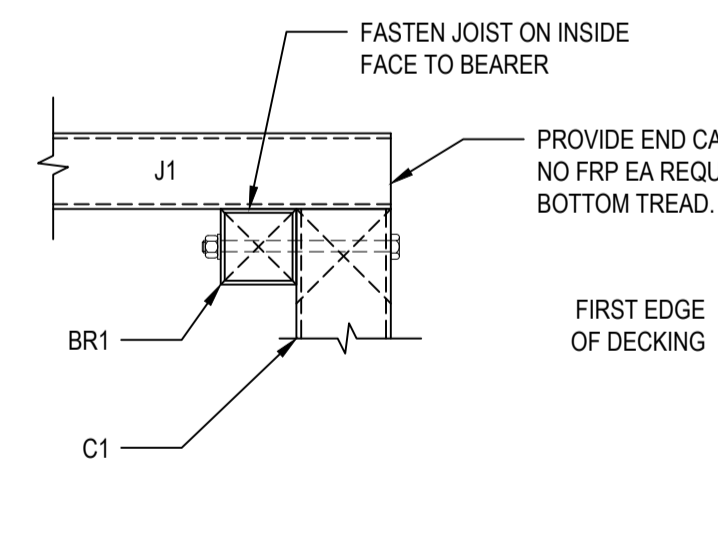
DETAIL A
SCALE 1:10



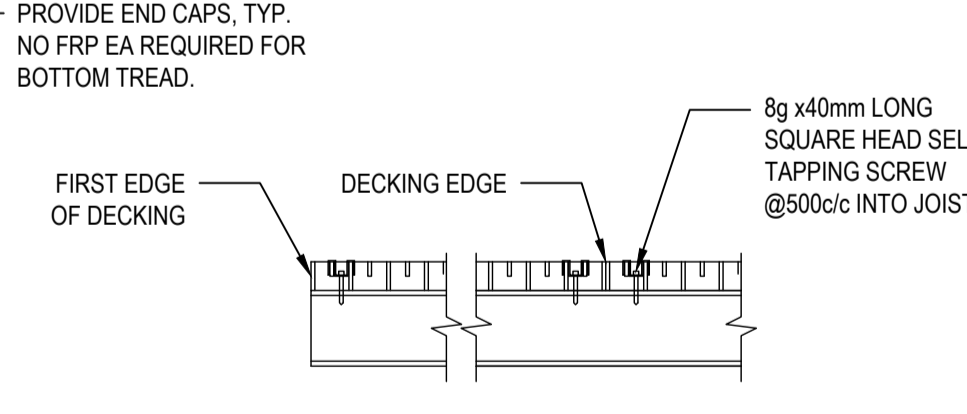
DETAIL B
SCALE 1:10



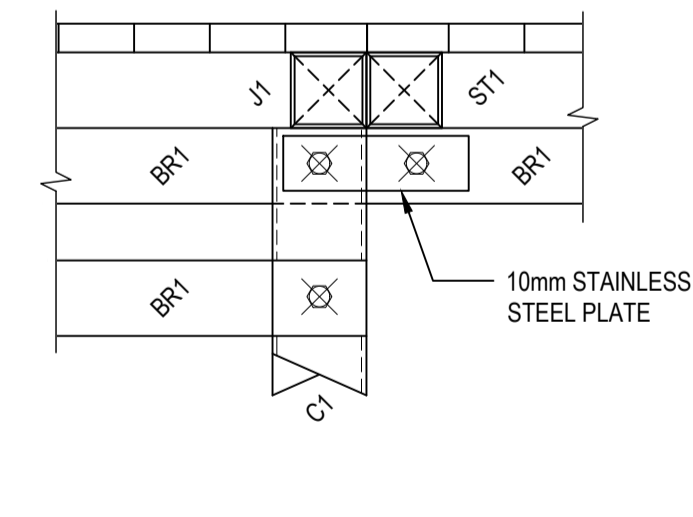
DETAIL C
SCALE 1:10



DETAIL D
SCALE 1:10



DETAIL E
SCALE 1:10



DETAIL F
SCALE 1:10

REVISION	AMENDMENTS	DATE	CKD	APP
3	ISSUED FOR CONSTRUCTION	20.09.23	TS	TS
2	ISSUED FOR CONSTRUCTION	18.08.23	TS	TS
1	ISSUED FOR CONSTRUCTION	07.03.23	TS	TS
B	ISSUED FOR REVIEW	20.12.22	TS	TS
A	ISSUED FOR REVIEW	23.11.22	TS	TS

CLIENT: **Shellharbour City Council**

PLAN REFERENCE: **4519.06**

ARCHITECT: **MIENGINEERS**

MIENGINEERS

SYDNEY OFFICE
83 - 89 Renwick Street,
Redfern NSW 2016
Tel (02) 8396 6565

SOUTH COAST OFFICE
49 Berry Street, Nowra NSW 2541
Tel (02) 4423 0566

WOLLONGONG OFFICE
Suite 3a, 128-134 Crown Street,
Wollongong NSW 2500
Tel (02) 4423 0566

THIS DRAWING AND THE CONCEPTS CONTAINED THEREIN ARE THE PROPERTY OF MI ENGINEERS. NO UNAUTHORISED COPYING IS PERMITTED. NOTHING IS TO BE CONSTRUCTED BASED ON THIS DRAWING, OR PART OF THIS DRAWING, WITHOUT THE WRITTEN PERMISSION OF MI ENGINEERS. DRAWINGS TO BE READ IN CONJUNCTION WITH OTHER RELATED DESIGN DOCUMENTATION. FURTHERMORE, WHERE MIENGINEERS RELIES ON THE INFORMATION SUPPLIED BY OTHERS TO PRODUCE THE DESIGNS, WE ACCEPT NO LIABILITY FOR ERRORS, TO THE EXTENT THAT THE DESIGN HAS MADE RELIANCE ON THIS INFORMATION. MUST BE READ IN COLOUR

PROJECT: **PADDELCRAFT LAUNCHING FACILITY SHORT ST, LAKE TABOURIE DETAILED DESIGN**

DRAWING NAME: **FACILITY DETAILS**



DESIGNED: TS	DRAWN: SP	SCALE: NOTED	SHEET SIZE: A1
DRAWING STATUS: CONSTRUCTION		DRAWING No: S010	
PROJECT No: DN220293		REVISION: 3	